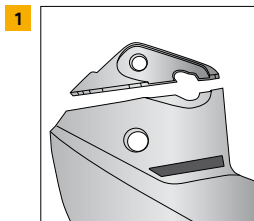
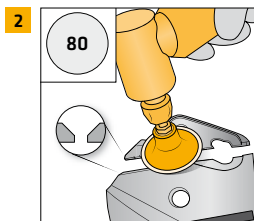


SIKA PLASTIC ADHESIVE SUPERFAST BONDING OF PLASTIC PARTS



■ Damage: a broken piece of plastic



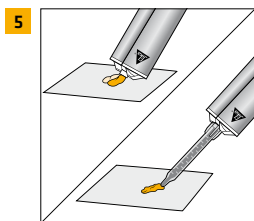
■ Grind a V-groove (1 cm approx.) into the side edges, use 80 grit sandpaper



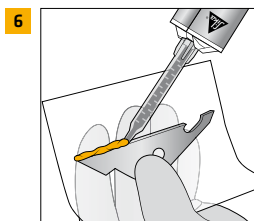
■ Clean entire work area using Sika® Cleaner G+P, making sure the surface is completely dry and no moisture remains



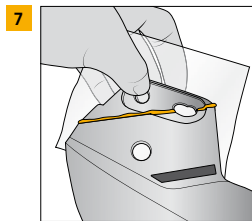
■ Spray a thin coat of Plastic Primer on both sides, flash-off for 5 min¹⁾



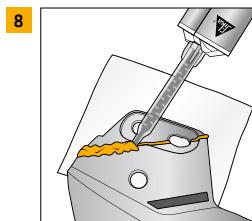
■ Before attaching mixer, extrude some material until both parts A and B flow evenly
■ Attach static mixer and dispense a small amount of adhesive



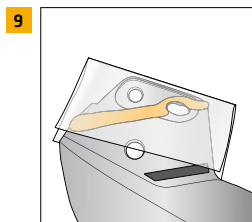
■ Position one part on the Sika Contouring Film and apply Plastic Adhesive Superfast on the breaking point



■ Fix both parts



■ Fill up the break with adhesive



■ Bend the film and compress adhesive and wait for adhesive to be cured according to product label



¹⁾ All time indications are related to 23°C (ambient and substrate). Product curing behavior is temperature dependent and increases with higher temperature and vice versa. Cure time may be accelerated by applying heat up to 85°C using infrared lamps, heating blankets or ovens. Consult curing information on product label or contact Sika Technical Service.

Our most current General Sales Conditions shall apply. Please consult the most current local Product Data Sheet prior to any use.