

SIKA AT WORK

COSTA COFFEE, BASILDON, ESSEX

FLOORING: [Sikafloor® PurCem®, Sikafloor®-210 PurCem®, Sikafloor®-310 PurCem® and Sikafloor®-161](#)

REFURISHMENT: [Sika® Repair and Sikaflex®-PRO-3](#)

BUILDING TRUST



COSTA COFFEE, BASILDON, ESSEX



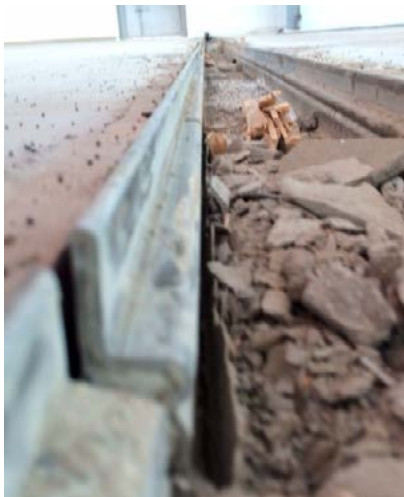
SHORTLISTED FOR LARGE PROJECT OF THE YEAR (FeRFA 2016).

Main contractors, Volker Fitzpatrick, selected McDaid Screeding specifically for this project as the company's specialist expertise in screeding and resin-based projects was likely to prove invaluable for the Costa Coffee building in Basildon, Essex – destined to become the company's highest-producing UK roasting plant.

The high-calibre building required a high-quality flooring to cover a 5,000m² area. The client's Whitbread, acting on behalf of Costa Coffee, requested a system which was durable, sustainable and offered a smooth, hi-gloss polyurethane finish as well as a 10-year lifecycle and thermal capabilities of up to 70°C.



← Diamond grinding surface preparation of C40 concrete required to remove 5 mm x 1 meter away from either-side of the drain channels in order to create edge to terminate Sika Purcem HS21 without creating an irregular visual fall back to channel



↑ Issues with drains on arrival on site being set level with existing concrete substrate and channel running out of tolerance either side of the linear meter frame.

COSTA COFFEE BASILDON, ESSEX



Upside down Sika Purcem HS21 scratch coat primer

Sikafloor®- PurCem® HS21, a high-gloss, water-based, polyurethane, met the brief as it offers a thermal and scratch resistant, high-aesthetic finish in areas of extreme hygiene, such as food preparation. The £36 million Costa Coffee plant, which opens in 2017, is designed to manufacture 45,000 tonnes of ground coffee per year.

The resin was installed in two phases, each phase being approximately 50% of the total flooring area. Firstly, Sikafloor®-161, a two-part epoxy primer was applied. Once cured, it was followed by 4mm of Sikafloor®-210 Purcem, a resin scratch coat, and 4mm of Sikafloor®-210 Purcem screed. Sikafloor®-310 Purcem provided a polyurethane, high-gloss finish. In addition, existing concrete joints were raked out and filled with Sikaflex® PRO-3, a one-part, moisture-curing, self-levelling elastic joint sealant.

The project encapsulates how a manufacturer's innovation in developing a sustainable solution can be interpreted to suit a client's needs and be fit for purpose for a major building project. The excellent working relationship between the specialist contractor and manufacturer was vital in this case, with Sika providing relevant technical information and application support throughout the extremely challenging installation.



Finished floor and cove junction

Giorgio Fioravanti, Production Director of Costa said, "For Costa the project was very complex and important. The laying of the flooring, right in the middle of the project, presented a scheduling and operational task with countless interdependencies. McDaid's supportive and flexible approach gave the best way to get the flooring laid and it kept the multitude of other contractors on progress with their works - a fantastic achievement."

He goes on to say, "In addition, their expert product and process guidance resulted in the best outcome and at the lowest overall cost. We are very pleased with the outcome and think the flooring enhances the overall effect of our wonderful new facility."

For further information call 0800 112 3865