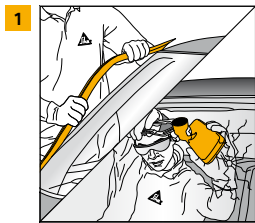


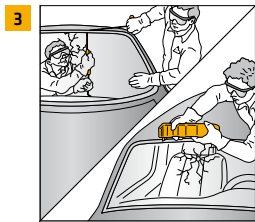
ALL BLACK PROCESS AUTO GLASS REPLACEMENT



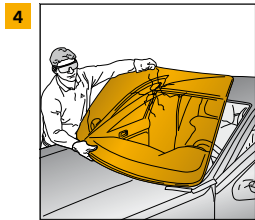
- Remove all decorative trims



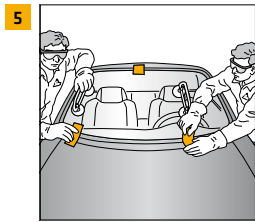
- Cover the aperture with masking tape



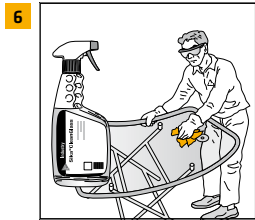
- Cut out damaged windshield using an electrical knife, cutting wire, cold knife etc.



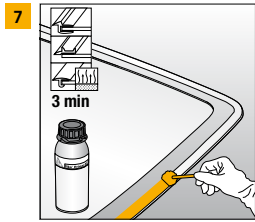
- Remove damaged windshield



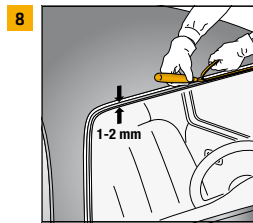
- Dry fit new windshield



- Clean the new windshield with Sika® Cleaner G+P



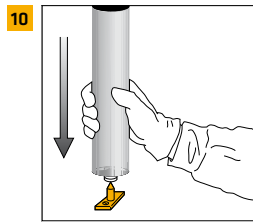
- Prime the bonding surface of the glass using Sika® Primer-207



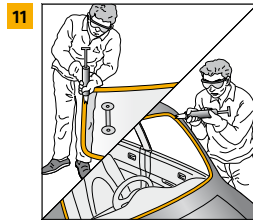
- Trim back the remaining adhesive bead to 1-2 mm



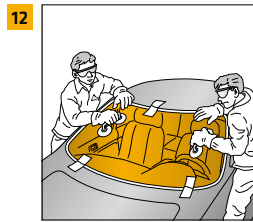
- Cover any minor damage to paint work using Sika® Primer-207. In case of larger areas contact your body shop or refer to the car manufacturer's specification



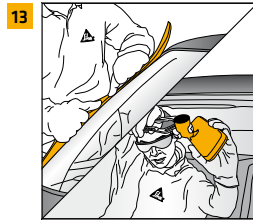
- Open the cartridge or the unipack



- Apply a triangular bead of adhesive either to the glass or the aperture



- Place the windshield in position within the open time of the adhesive



- Refit trims and mouldings



BONDING SURFACE	PRETREATMENT STEPS
Float Glass and Ceramic coated Glass*	●
Bare Metal Scratch < 5 cm ²	●
Bare Metal 5 cm ² to 150 cm ²	●●
Intact OEM Paint	●
Repair Paint (after complete curing of paint)	●
PVC/RIM Encapsulation	●
Fresh Cut Bead	Optional / ●
Pre-applied adhesive system	Optional / ●
Polycarbonate**	●
PMMA**	●

● = Sika® Primer-207

* Glass pad must be clean of dirt and dust. Potential contamination must be removed, eg. by using Sika® PowerClean Aid.

** Coating must be removed prior to use, only for temporary glazing. UV-protection required.

Our most current General Sales Conditions shall apply. Please consult the most current local Product Data Sheet prior to any use.