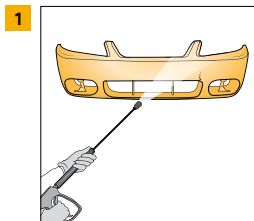
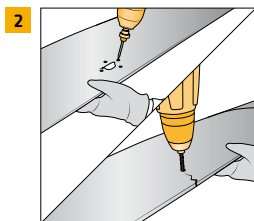


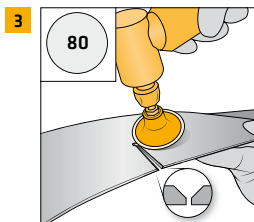
SIKA PLASTIC ADHESIVE FAST BUMPER AND PLASTIC REPAIR



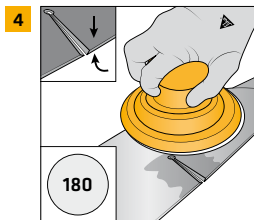
- Rinse plastic part with high pressure



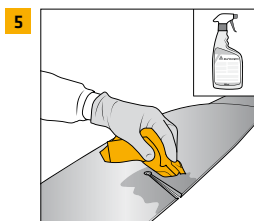
- Crack: Drill hole with a V-cut at the end of the crack
- Hole: Drill few holes with V-neck around the damage



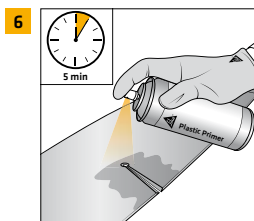
- On the front side grind a V-groove (1 cm approx.) into the side edges, use 80 grit sandpaper for grinding



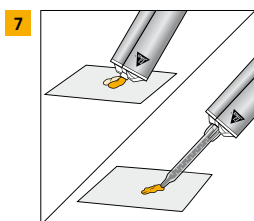
- Roughen the surfaces on the front and back sides with 180 grit sandpaper



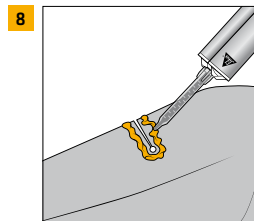
- Clean entire work area using Sika® Cleaner G+P, making sure the surface is completely dry and no moisture remains



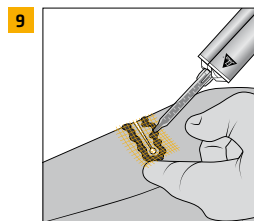
- Spray a thin coat of Plastic Primer on both sides, flash-off for 5 min¹⁾



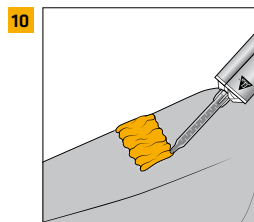
- Before attaching mixer, extrude some material until both parts A and B flow evenly
- Attach static mixer and dispense a small amount of adhesive



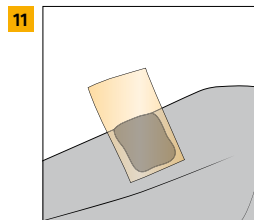
- Apply Plastic Adhesive Fast around the crack to the backside of the part



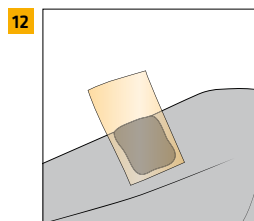
- Position the pre-cut reinforcement film into the applied adhesive



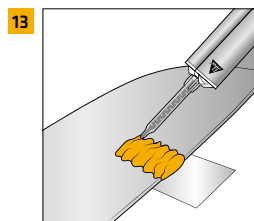
- Apply the adhesive bubble-free on top of the reinforcement film until it is completely covered



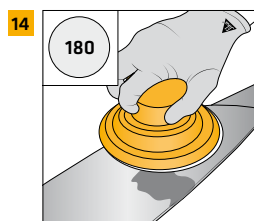
- Spread from the adhesive using the Sika Contouring Film from the middle to the edges to avoid bubbling



- Fill the damaged area on the front side of the part with adhesive



- Spread from the adhesive using the Sika Contouring Film
- Respect curing time¹⁾ as per product label



- Sand the surface and proceed with filling and painting

