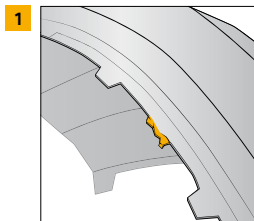
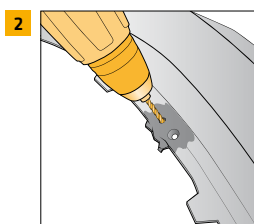


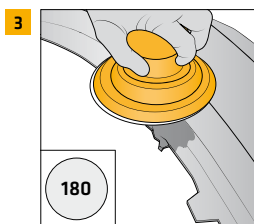
# SIKA PLASTIC ADHESIVE SUPERFAST RE-SHAPE AND MODEL PLASTIC CLIPS



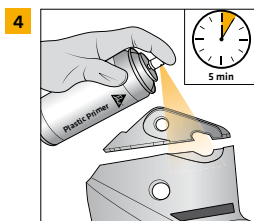
- Damage: a broken plastic clip



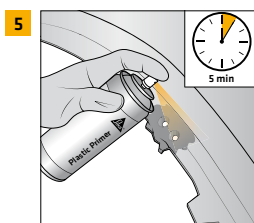
- Drill few holes with V-neck



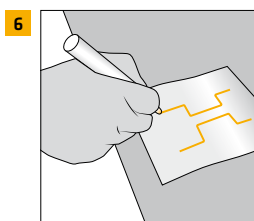
- Sand the area around the broken clip use 180 grit sandpaper



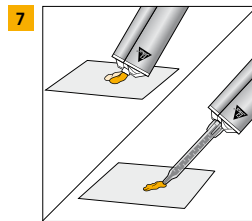
- Clean entire work area using Sika® Cleaner G+P, making sure the surface is completely dry and no moisture remains



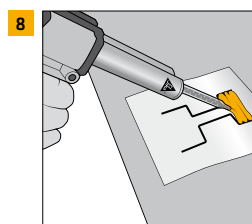
- Spray a thin coat of Plastic Primer on both sides, flash-off for 5 min<sup>1)</sup>



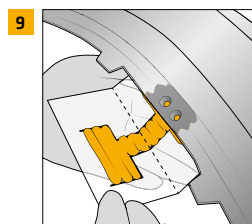
- Draw the shape of the clip and bonding-areas on the Sika Contouring Film



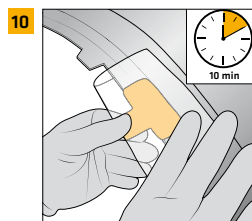
- Before attaching mixer, extrude some material until both parts A and B flow evenly
- Attach static mixer and dispense a small amount of adhesive



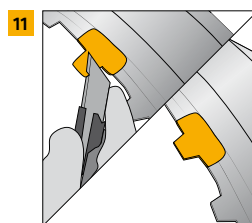
- Apply Plastic Adhesive Superfast within the prefigured area



- Press adhesive on the backside of the area and bend it in the middle



- Press other side on the top and wait for curing



- After curing, cut the new clip to required shape



<sup>1)</sup> All time indications are related to 23°C (ambient and substrate). Product curing behavior is temperature dependent and increases with higher temperature and vice versa. Cure time may be accelerated by applying heat up to 85°C using infrared lamps, heating blankets or ovens. Consult curing information on product label or contact Sika Technical Service.

Our most current General Sales Conditions shall apply.  
Please consult the most current local Product Data Sheet prior to any use.