



# SIKA AT WORK

## ITV EMMERDALE STUDIO, LEEDS

### FLOORING:

Sikafloor® MultiDur ES-24 ECF, Sikafloor®-263SL,  
Sikadur®-31 CF, Sikafloor®-220W, Sikafloor®-262 AS,  
Sika® Floorjoint S

BUILDING TRUST



# ITV EMMERDALE STUDIO LEEDS

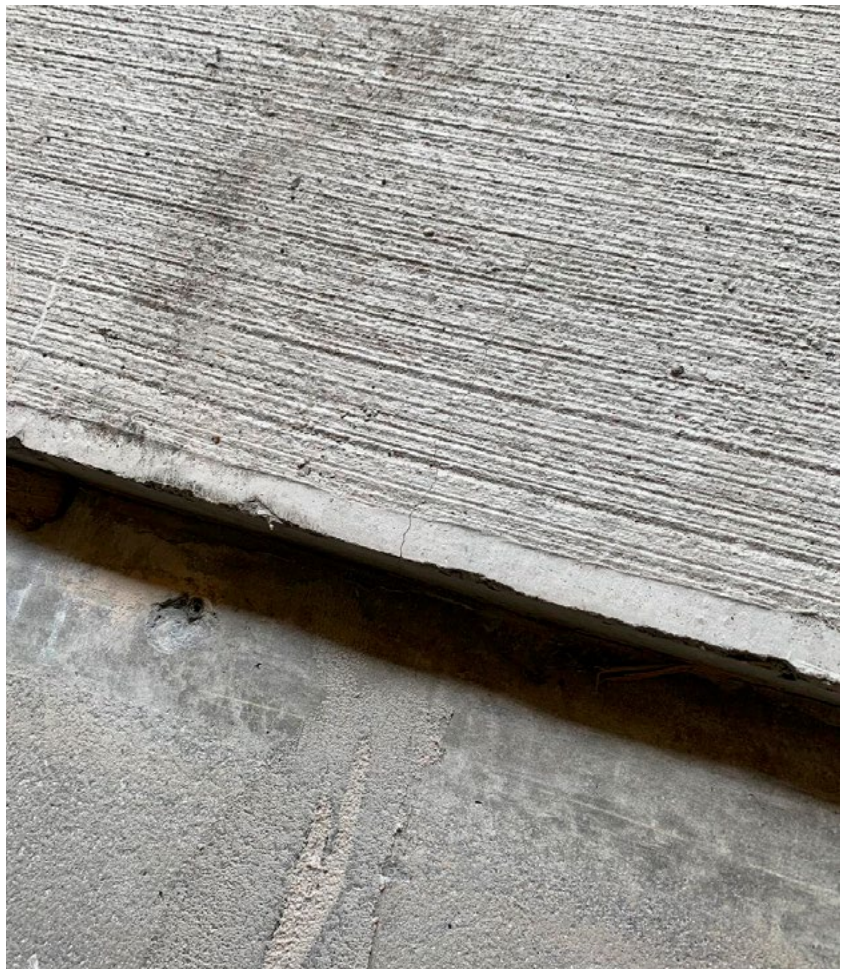




## SIKA'S QUALITY FLOORING SYSTEM PUTS TV STUDIO ON SOUND FOOTING.

When a TV studio used to broadcast one of Britain's longest-running soaps was in need of refurbishment, Sika's seamless, anti-static system was proved the ideal solution.

Emmerdale has been a permanent fixture on the ITV network since its screen debut in 1972. The show attracts more than 6 million weekly viewers; therefore it was vital the Leeds-based TV studio in which it is filmed had flooring that showed itself to be super-flat and smooth. The studio's existing flooring had become damaged over time, necessitating the installation of a seamless, durable replacement.



# ITV EMMERDALE STUDIO LEEDS



The new system's anti-static properties would be key to its specification in order to preserve the function of vital electrical equipment. It led to the selection of Sikafloor® MultiDur ES-24 ECF, a proven, high-quality resin flooring system for TV studio and media projects.

The studio's floor refurbishment, which was carried out by specialist contractor Zircon Flooring, began in July 2019. It involved renovating a 788m<sup>2</sup> surface, which included the installation of Sikadur®-31 CF crack repair mortar and Sikafloor®-263SL. This multi-purpose binder, which also offers optimum mechanical and chemical resistance, provided the system's hard-wearing, seamless finish. Static control was provided in the form of Sikafloor® Earthing Kit, a conductor system comprising copper earthing tapes and points. A layer of Sikafloor®-220W anti-static primer was added, and once cured, the flooring was finished with Sikafloor®-262 AS.

The refurbishment presented a challenge in the form of a joint running through the floor's centre. Had a standard movement joint been installed it would have caused a camera pedestal to jump as it tracked over it. To overcome the issue, the contractor installed Sika® FloorJoint S, a newly-designed, prefabricated 'waved' floor that allows for improved load distribution. Zircon was able to employ the joint without compromise to the high tolerance level it was required to achieve (+/- 1mm over a 3 metre straight edge). As well as creating a completely seamless floor, the Sika® FloorJoint S system eliminates the noise caused by machinery crossing extruded joints. This leads to a more comfortable and quieter environment, which is essential to quality TV recording.

Stewart Draper at Zircon, said: "This was an extremely challenging, high-profile floor refurbishment project. Its success is due to Zircon's experience, having installed floors at other TV studios in the past 15 years, and Sika's incomparable flooring solutions. Zircon understands Sika flooring products are the only ones available to achieve a high floor tolerance of +/- 1mm over a 3 metre straight edge, which is required for HD and the new 4K filming. This floor tolerance far exceeds the

British Standard (+/- 3mm over a 2-metre straight edge). The Emmerdale studio project was another collaborative triumph for Sika and Zircon."

The Emmerdale TV studio site is rated BREEAM excellent, a status which the Sika flooring system was vital to upholding. Its low-emission products fulfil the demanding requirements for indoor air quality in public and private buildings for the comfort and wellbeing of occupants.

Despite the challenging nature of the refurbishment, the studio was furnished with a smart, durable, anti-static floor in just five weeks. Sika and Zircon's collaboration was key to the project's success, as the development of a waved flooring joint guaranteed a completely seamless floor whilst delivering an exceptional tolerance level. The resulting floor provided Emmerdale studios with a surface fit for a genuine British TV institution.

**For further information call 0800 112 3865.**