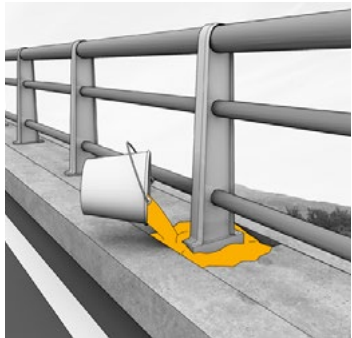
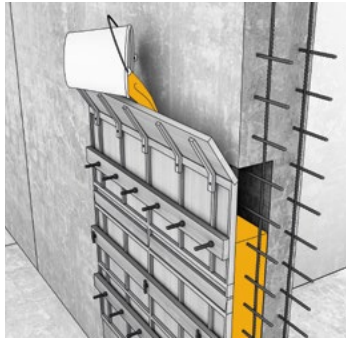


USES

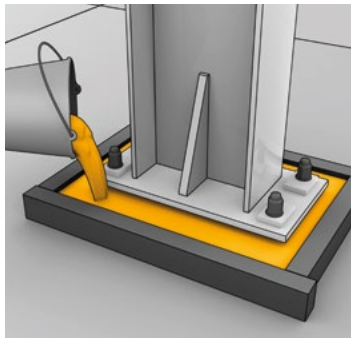
The one cementitious grout that will do multiple jobs: **Filling voids, transferring loads and fixing non-structural elements.**



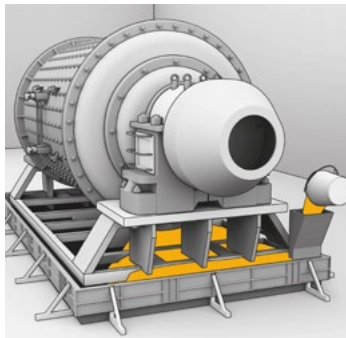
Fixing.



Enlarging and repairing elements in confined areas.



Grouting column base plates.



Grouting machine bases.

KNOW-HOW FROM SITE TO SHELF

SikaGrout®-111 GP HIGH PRECISION LIKE A SWISS WATCH

Shrinkage compensated, flowing cementitious mortar to fill voids



Our most current General Sales Conditions shall apply.
Please consult the most current local Product Data Sheet prior to any use.



SIKA LIMITED

Head Office
Watchmead
Welwyn Garden City
Hertfordshire, AL7 1BQ
United Kingdom

Contact

Phone +44 1 707 394444
Fax +44 1 707 329129
E-Mail SDenquiries@uk.sika.com
www.sika.co.uk
@SikaLimited

SPECIALIST DISTRIBUTION/SIKAGRROUT-111GP JANUARY 2019
WP/77/77

SikaGrout®-111 GP

HIGH PRECISION, SHRINKAGE COMPENSATED CEMENTITIOUS MORTAR

HIGH QUALITY

EASY HANDLING

- Pre-mixed to ensure high quality mortar
- One component product – just add water and mix
- Shrinkage compensated
- No segregation or bleeding
- Can be poured or pumped

HOW TO MIX:

1. Place minimum recommended water ratio in mixing container
2. Progressively add powder whilst mechanically mixing using low speed (max. 500 rpm) electric drill.
3. Add more water if required to suit the desired consistency and flow properties but not exceeding maximum dosage
4. Mix in total for minimum 3 minutes or until the material is homogenous.



HIGH PRECISION

FREE FLOWING GROUT

- Filling any voids, cavities, gaps and recesses:
 - Machine and base plates
 - Dowling reinforcing bars
 - Fixing posts, etc.
- Bedding joints in pre-cast concrete sections



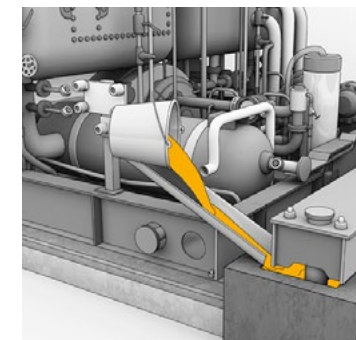
HIGH PERFORMANCE

EXCELLENT BONDING & STRENGTH

- Excellent flow properties
- Adjustable consistency
- Fast strength development
- High effective bearing area
- Good adhesion to concrete

HOW TO APPLY:

1. Prepare the substrate until it is clean, free from dust or loose material. Make sure the surface is not contaminated. Pre-wet the surface.
2. Pour or pump the grout with the suitable tools or equipment.
3. Grouting area must always be confined.



Pourable.



Pumpable.