



WATERPROOFING

Sikadur Combiflex[®] SG System

HIGH PERFORMANCE JOINT AND CRACK SEALING SYSTEM

BUILDING TRUST



HIGH PERFORMANCE JOINT AND CRACK SEALING SYSTEM

THE Sikadur Combiflex® SG System is the second generation of the globally renowned Sikadur Combiflex® range, with improved adhesion and performance characteristics and approvals for use in contact with drinking water. This unique system consists of the weldable Sikadur Combiflex® SG tapes and established Sikadur® adhesives. It is designed for use in a joint and crack waterproofing system in all types of structures, however mainly in watertight concrete structures.

The Sikadur Combiflex® SG System is a high performance joint and crack sealing solution for:

- Movement joints
- Construction joints
- Pipe penetrations
- Cracks

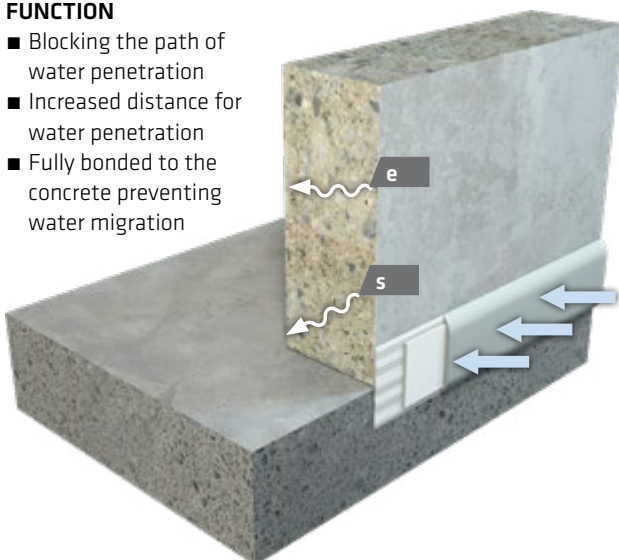
The system allows variable and high levels of movement in one or more directions, whilst maintaining a watertight seal.

MAIN ADVANTAGES:

- Versatile system suitable for many difficult situations
- Advanced adhesion to many different substrate materials
- Extremely flexible-high joint / crack bridging ability
- Good resistance to many different chemicals
- Can be used in contact with potable/drinking water
- Use for both cold and hot water applications and easy to install
- Suitable for dry and damp concrete surfaces
- Performs well within a wide range of temperatures
- Weathering and UV-resistant
- Available with normal and rapid hardening grades of the adhesive
- Root penetration resistant

FUNCTION

- Blocking the path of water penetration
- Increased distance for water penetration
- Fully bonded to the concrete preventing water migration



$s \gg e$

e = Water penetration (EN 206)

s = Increase length for water penetration

Sikadur Combiflex® SG SYSTEM - BUILD-UP



e.g: Movement joint

- 1 Base layer Sikadur® Adhesive
- 2 Sikadur Combiflex® SG Tape (sealing tape with clear expansion zone)
- 3 Top layer Sikadur® Adhesive
- 4 Joint filler
- 5 Concrete

TYPICAL APPLICATIONS

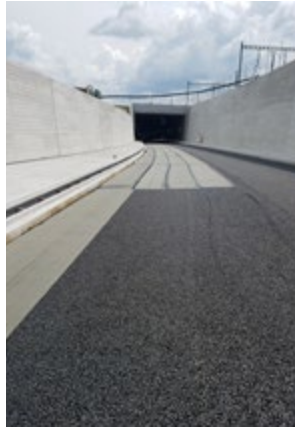
THE Sikadur Combiflex® SG System is versatile and suitable for use wherever water and moisture can penetrate into the structure from the outside.

SEALING ALL TYPES OF JOINTS AND CRACKS IN MANY DIFFERENT STRUCTURES AND APPLICATIONS INCLUDING:



BASEMENTS

- Water tightness with high durability
- Easy to control / repair
- Independent of concreting works
- High joint movement capacity



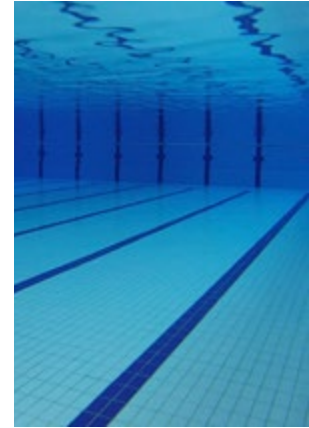
BRIDGES / TUNNELS

- De-icing salt resistance
- UV resistant Tunnel Ventilation Ducts
- Airtight
- Accommodates variable joint widths



DRINKING (POTABLE) WATER TANKS

- Approved for use in contact with drinking water
- Long-term water resistance
- Ideal for new and repair works
- Easy to control / repair



SWIMMING POOLS

- Resistance to ozone, chlorine and UV light
- Easy to clean
- Non abrasive to skin



STRUCTURAL REPAIRS

- Watertight crack sealing
- Resistant to water pressure from both faces / sides of the structure



SEWAGE TREATMENT PLANTS

- Resistant to sewage
- Good abrasion resistance
- Independent of concreting work
- High joint movement capacity



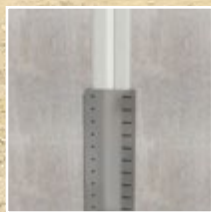
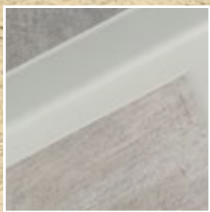
GROUND WATER PROTECTION

- Chemically resistant
- High environmental security
- Watertight sealing



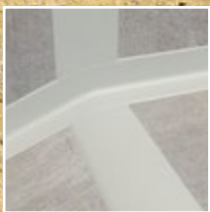
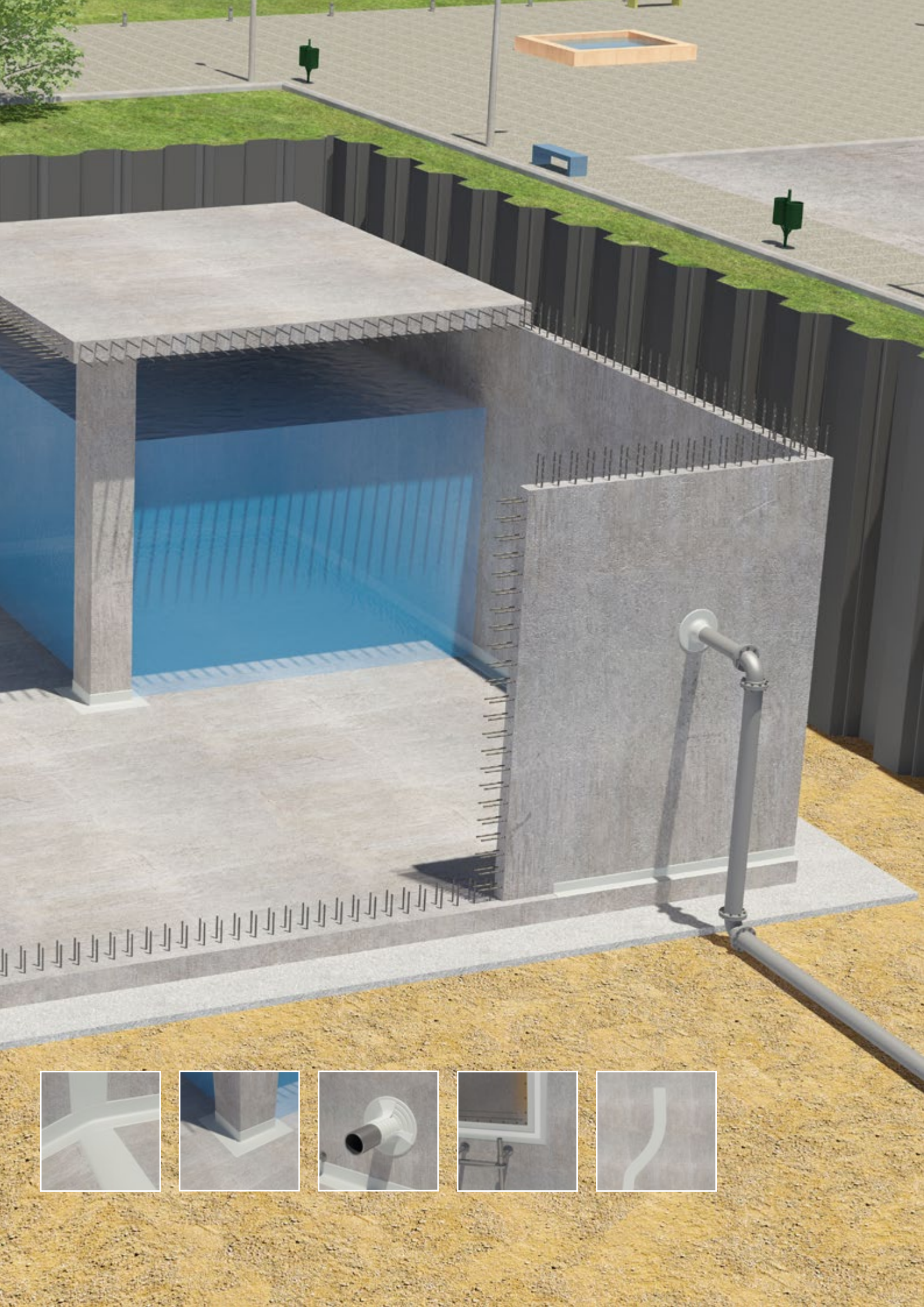
FACADE JOINTS

- High joint movement capacity
- Overpaintable (adhesive)
- External weathering resistant
- UV light resistant









Sikadur Combiflex® SG System – PRODUCT RANGE

Sikadur Combiflex® SG TAPE

Sikadur Combiflex® SG Tapes are flexible, preformed waterproofing tapes, based on modified flexible Polyolefin (FPO), with excellent adhesion to the Sikadur® epoxy adhesives.

Sikadur Combiflex® SG TYPE P

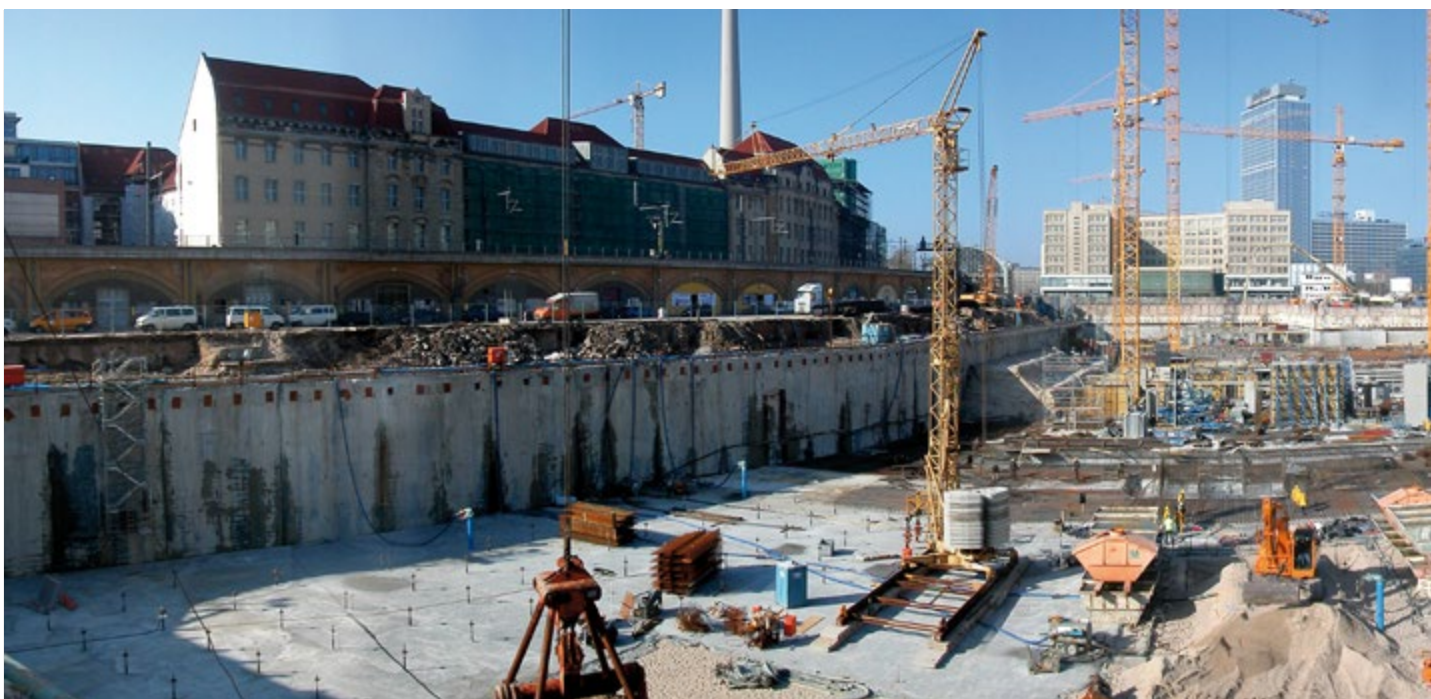
Characteristics [mm]	Sikadur Combiflex® SG-10 P	Sikadur Combiflex® SG-20 P
Tape thickness	1	2
Tape width	100, 150, 200, 250, 300, 400, 500, 1000, 2000	150, 200, 250, 300, 400, 500, 1000, 2000
Tape length	25	25

Sikadur Combiflex® SG TYPE M

With temporary red middle strip for easier application in movement joints.

Characteristics [mm]	Sikadur-Combiflex® SG-10 M	Sikadur-Combiflex® SG-20 M
Tape thickness	1	2
Tape width	*100, 150, *200, 250, 300	150, *200, 250, 300
Tape length	25	25

*Options are available as stock items, please contact Customer Service for availability of other versions.



Sikadur® ADHESIVES

To achieve a watertight and durable connection between Sikadur Combiflex® SG tapes and the substrate, Sikadur® epoxy resin based adhesives are used.

Sikadur® Combiflex® CF Adhesive



Grey 2-component epoxy resin based

CHARACTERISTICS & ADVANTAGES

- Optimum workability and ease of finishing
- Provides a smooth surface finish
- Normal and rapid hardening grades available

Packaging

6 kg units (A+B) combined pack or
20 kg units part A
10 kg units part B

Sikadur®-31 DW



Grey 2-component epoxy resin based

CHARACTERISTICS & ADVANTAGES

- For installation where approval for contact with potable / drinking water is required
- Normal and rapid hardening grades available
- Various drinking water certificates

Packaging

6 kg units (A+B) combined pack
30 kg units part A
10 kg units part B



TYPICAL AREAS OF USE

CONSTRUCTION JOINTS AND STATIC CRACKS



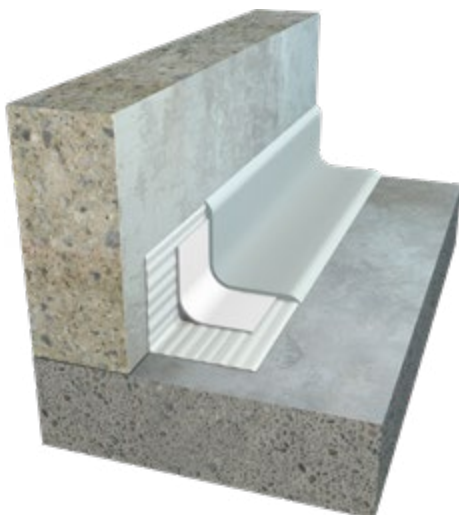
Construction joints are formed by the operational subdivision of structures into sections, such as for the daily completion of concreting stages (also called "day work joints").

MOVEMENT JOINTS



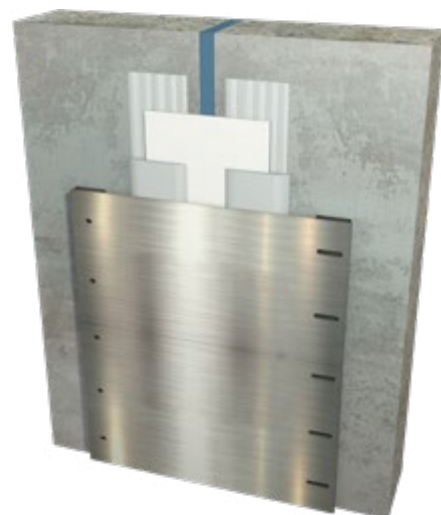
Movement or expansion joints separate structural elements and compensate for movements caused by the effects of heat, ground settlement or loads imposed on the structure.

ANGLED / COVERED INSTALLATION



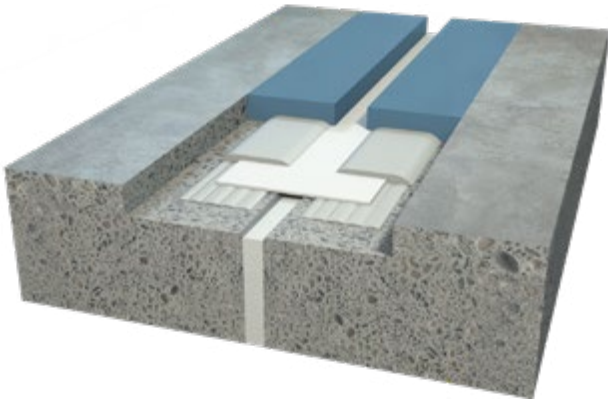
Where there is mechanical impact anticipated, the Sikadur Combiflex® SG Tape should be protected by filling behind the coving and additional surface protection as necessary.

SUPPORT FOR JOINTS WITH NEGATIVE PRESSURE



E.g. external basement walls. For exposure to negative water pressure from outside, the Sikadur Combiflex® SG Tape must be secured with a steel plate fixed on one side of the joint.

CONCEALED OR FLUSH INSTALLATION



Typical for use in floor joint.

PENETRATION DUCT OR PIPE, COLLARS



Basement wall with power and water services entry ducts.

CARRIAGEWAY JOINTS



Typical for use on bridge deck joints or on multi-storey car park deck joints.

CONNECTION JOINTS



E.g. connections to lift shafts, steel beams etc.

SIKA FULL RANGE SOLUTIONS FOR CONSTRUCTION:



LIQUID APPLIED ROOFING



SINGLE PLY ROOFING



CONCRETE



CONCRETE REPAIR



STRUCTURAL STRENGTHENING



WATERPROOFING



JOINT SEALING



FAÇADE STRUCTURAL ADHESIVES



FLOORING



INDUSTRY



DISTRIBUTION



BUILDING TRUST

FOR MORE INFORMATION:



Visit www.sikawaterproofing.co.uk

WHO WE ARE

Sika Limited and Sika Ireland Limited are part of the global Sika Group, specialising in the manufacture and supply of chemical based products. Sika have a leading position in the development and production of systems and products for bonding, sealing, damping, reinforcing, and protecting in the building sector and the motor vehicle industry. Sika has subsidiaries in 101 countries around the world and manufactures in over 200 factories. With more than 20,000 employees Sika generates annual sales of CHF 7.09 billion (£5.45bn). We are also committed to providing quality, service, safety and environmental care.

In the UK and Ireland, we provide market-leading solutions for concrete, waterproofing, roofing, flooring, refurbishment, sealing & bonding, and industry, and have manufacturing sites in Welwyn Garden City, Preston, Leeds and Dublin with more than 870 employees and a turnover of more than £260 million.

The information, and, in particular, the recommendations relating to the application and end use of Sika® products, are given in good faith based on Sika's current knowledge and experience of the products when properly stored, handled and applied under normal conditions. In practice, the differences in materials, substrates and actual site conditions are such that no warranty in respect of merchantability or of fitness for a particular purpose, nor any liability arising out of any legal relationship whatsoever, can be inferred either from this information, or from any written recommendations, or from any other advice offered. The proprietary rights of third parties must be observed. Please refer to our homepage www.sika.co.uk for our current standard terms & conditions applicable to all orders. Users should always refer to the most recent issue of the Product Data Sheet for the product concerned, copies of which will be supplied on request.



SIKA LIMITED

Head Office
Watchmead
Welwyn Garden City
Hertfordshire, AL7 1BQ
United Kingdom

Contact

Phone +44 1 707 394444
Fax +44 1 707 329129
E-Mail enquiries@uk.sika.com
www.sikawaterproofing.co.uk
@SikaLimited

SIKA IRELAND LIMITED

Sika House
Ballymun Industrial Estate
Dublin 11, D11 DA2V
Ireland

Contact

Phone +353 1 862 0709
Fax +353 1 862 0707
E-Mail info@ie.sika.com
www.sika.ie

BUILDING TRUST

