

EXPLORE

OUR AMAZING OFFERING
FOR UK HOUSE BUILDERS



DECORATIVE FAÇADE RENDERS

BUILDING TRUST



ABOUT SIKA BUILDING FINISHING

YOUR RENDER EXPERTS

Sika is a leading manufacturer and innovator of rendered façade systems, growing to be one of the foremost producers of industrial, ready to use products for the construction and housebuilding industry.

Offering a wide range of façade solutions to meet the architectural style and finish specified by designers, our products provide a long lasting and durable finish as well as adding style, comfort and creativity to new builds and renovation projects.

Our acclaimed reputation within the construction industry is a testament to the quality of our products and the unrivalled level of support made available via our highly experienced staff, combining technical expertise with a hands-on approach to meet the requirements of even the most challenging projects.

WHY WE'RE NUMBER ONE...

- Sika is a speciality chemicals company with a leading position in the development and production of systems and products for bonding, sealing, damp-proofing, reinforcing and protecting in the building sector and motor vehicle industry.
- In 2019, Sika acquired the Parex and Enewall brands, bringing them under the Building Finishing umbrella. The success of this allowed Sika to offer one of the broadest ranges of advanced single coat and specialist renders available in the UK, including insulated refurbishment systems.
- Sika is active in 100 countries on all continents with strong local organisations. With more than 300 plants worldwide and a network of 21 Global Technology Centres, Sika takes the lead in long-term research programmes and the development of new innovative solutions.
- To meet local markets' specific needs and requirements, new products and systems are also developed across the 21 Regional Technology Centres, helping to facilitate cost-optimisation for manufacturing and effective market pricing.
- Sika has an integrated management system which is externally accredited to: BS EN ISO 9001, BS EN ISO 14001, BS ISO 45001 & BES 6001.
- Not content with just manufacturing market leading products, we also offer a "complete" package to customers and specifiers with industry sector experts available to provide unsurpassed levels of free technical advice, specifications and CAD details.



OUR SERVICE

The Sika reputation has not only been built upon the quality products we offer, but through the outstanding level of service provided throughout every step of the way.

From dedicated Specification Managers on hand from the start to ensure each individual requirement is met, to site support and training being made available through the entire project journey, Sika provides the complete solution to any project.

SAMPLES



TECHNICAL SUPPORT



REGISTERED APPLICATORS



DEDICATED SPECIFICATION MANAGER



SITE SUPPORT & TRAINING



NATIONAL DISTRIBUTION



CUSTOMER SERVICES



SPECIFICATION JOURNEY

HOW WE EXCEED YOUR EXPECTATIONS FROM START TO FINISH



INITIAL ENQUIRY

Contact made between Project Leader and Sika



REGISTERED CONTRACTOR

Recommending the most suitable contractor for the project



FACT FINDING

Discussions had to understand the project details and customer requirements



PRE-START MEETING

Carried out on site with key project stakeholders



SPECIFICATION CREATED

All recommendations detailed and specification drafted



SITE MONITORING

Regular site visits to ensure proper application



TENDER CREATION

Assistance provided where needed



PROJECT SIGN-OFF

Completed project is inspected and warranty issued if requested



OUR SPECIFICATIONS

TRUST THE HIGHLY EXPERIENCED TEAM TO DEVELOP A COMPREHENSIVE SIKA PROJECT SPECIFICATION, ISSUED PRIOR TO PROJECT COMMENCEMENT AND INCLUDING HIGH EXPOSURE AND COASTAL LOCATIONS WHEN APPLICABLE.

- NBS+ M20/M21 option available on request
- Product technical data sheets
- Mesh details
- Technical information sheets
- Construction details - typical and project specific when required
- U-Value calculations & condensation risk reports (if applicable)



WEATHER OR NOT

A GOOD RENDER SHOULD BE CAPABLE OF PROVIDING WEATHER PROTECTION THAT MEETS ZONE 4 VERY SEVERE WEATHER RATING.



Sika issue HE & CL Specifications when the location dictates:



High Exposure (HE)
Very severe



Coastal Location (CL)
Within 1 mile of the coastline or a tidal estuary

Exposure Zones

-  Very severe
-  Severe
-  Moderate
-  Sheltered

Exposure to wind-driven rain (litres/m² per spell)

- 100 or more
- 56.5 to less than 100
- 33 to less than 56.5
- Less than 33

Image taken from NHBC Standards 2019 Chapter 6.1 which is adapted from BRE Report "Thermal Insulation: Avoiding Risks".



PRODUCT INFORMATION

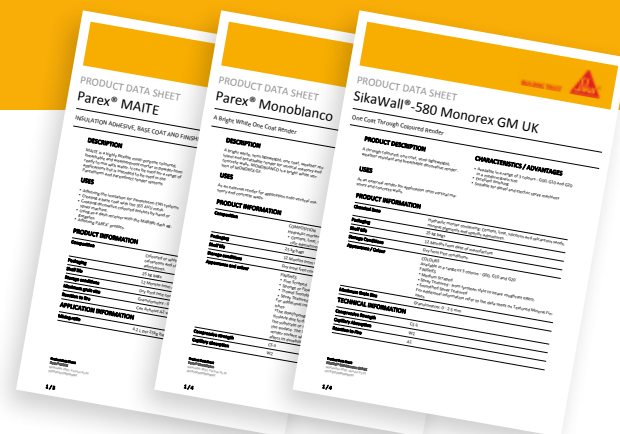
SIKA'S EXPERTS CAN ASSIST WITH A RANGE OF TECHNICAL SOLUTIONS



DATASHEETS

Technical and Safety Datasheets are available for all products within the Sika range.

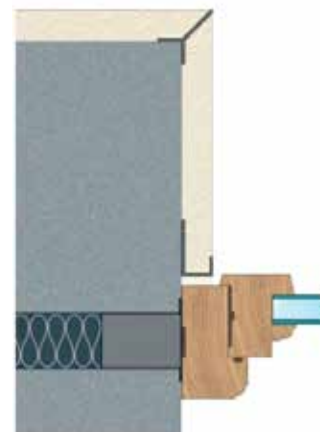
Visit sika.co.uk/buildingfinishing to download or speak to your Specification Manager.



CONSTRUCTION DETAILS

We have a suite of typical construction details covering a wide range of standard and non-standard substrates and systems.

We also provide project specific details when required.



PEACE OF MIND

WITH SIKA, YOU CAN REST ASSURED THAT OUR TEAM OF EXPERTS ARE AVAILABLE TO PROVIDE ADVICE AND SUPPORT THROUGHOUT YOUR ENTIRE PROJECT, FROM SPECIFICATION TO COMPLETION.

TECHNICAL SUPPORT

- Access to a network of registered applicators
- Local installer training available
- Nationwide project technical support provided via phone, email or in person
- Funding assistance for eligible, government funded, EWI projects
- Ease of product availability
- Sika products are registered with RIBA Product Selector / NBS+

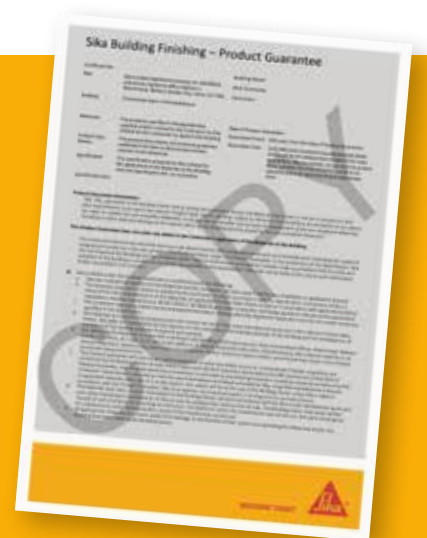


PRODUCT GUARANTEE

Sika provides a 10-year material and systems design guarantee, as required on all new build residential buildings by NHBC, Premier Guarantee, etc.

Sika render systems are pre-approved provided that:

- A project specification is issued
- The work is carried out by a Sika Registered Applicator
- The work is signed off by Sika



PRODUCT RANGE

WE HAVE PRODUCTS SUITABLE FOR ALL APPLICATIONS...

GENERAL RENDERS

The façade of the building is the last to be applied but the first thing to be seen from the outside which is why the Sika range of renders are available in an extensive range of colours and finishes to suit any application. Available in 48 standard colours, Monorex GM and GF have been developed to suit any masonry application.



LIME RENDERS

The Sika Heritage range of Lime Renders offer solutions for the technical problems often encountered during the renovation and restoration of old buildings. With such delicate work being carried out, it is essential that the most appropriate product is used, and the Sika Heritage range is perfectly compatible with old substrates as well as offering a range of finishes equivalent to mineral and synthetic render ranges.



SIKAWALL EWI SYSTEMS

External Wall Insulation (EWI) systems refer to the application of a certified system of insulation, cementitious renders and waterproof finishes to external fabric of the building. This unique application provides an enhanced decorative appearance while improving the thermal efficiency of the building, without reducing the living space inside. SikaWall EWI Systems are suitable for new builds within the residential, commercial, and health and leisure sectors, as well as upgrading the performance of existing buildings. Finishes include Revlane Acrylic and Siloxane finishes as well as a range of mineral renders.



PAREXDIRECT RENDER SYSTEMS

The Parexdirect system has been specially developed for direct applications onto approved render board systems but can also be applied directly onto suitable masonry substrates. They are available in the same extensive range of colours, finishes and textures as the EWI systems providing excellent weatherproofing and adhesion to the render board.



SUBSTRATES

SIKA RENDERS CAN BE APPLIED TO A WIDE VARIETY OF SUBSTRATES, INCLUDING:



Low and Normal Density Aircrete Lightweight Blockwork



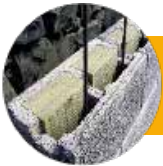
Ultra-lightweight & Lightweight Aggregate Concrete Blockwork



Dense Aggregate Concrete Blockwork



Clay Blockwork e.g. Porotherm



Wood Fibre Dry Stacked Modular Units
e.g. Durisol, Velox



Cast Concrete



Brick



Bradstone

PLUS OTHER SUBSTRATES, INCLUDING NO-FINES CONCRETE, STONE, COB, ADOBE, AND MORE.

Visit [sika.co.uk/buildingfinishing](https://www.sika.co.uk/buildingfinishing) for further information or call us on **01707 394444**

BUILDING TRUST

