

# STAY FLEXIBLE!

From Tricoflex® comes  
**Combiflex® TF**



Sikadur-Combiflex® TF System  
CERTIFIED FULL SYSTEM FOR JOINT  
AND CRACK SEALING

BUILDING TRUST



# Sikadur-Combiflex® TF System

## STRONG AND VERSATILE – ONE SYSTEM FOR ALL JOINT TYPES

THE Sikadur-Combiflex® TF System is the next generation of the popular and long-established Tricoflex® jointing system – a unique sealing system, which is distinguished by flexibility and combination possibilities for practically all types of joints and crack sealing. The system allows variable and high levels of movement, in one or more directions, whilst providing a high quality watertight seal.

The Sikadur-Combiflex® TF System consists of a range of jointing tapes and waterbar profiles made of thermoplastic elastomers (TPE) and an epoxy resin-based system adhesive. It can therefore be used before and after concreting anywhere in the building – whether under the base slab, in the wall or in the ceiling area.

**FLEXIBLE.  
STRONG.  
VERSATILE.**

- Jointing tapes for retrospective application
- Waterbar profiles
  - For concreting with in-situ concrete
  - For retrospective jointing with one or two-sided bonding profiles
- Complete solution with combination of jointing tapes and joint waterbars
- Tested for use as stand-alone system or in combination with the SikaProof® complete system



# Sikadur-Combiflex® TF System

HIGHLY FLEXIBLE – VERSATILE – DEPENDABLE

## UNIVERSAL COMPLETE SYSTEM

Joining tapes and joint waterbars allow the production of all joint combinations, details and transitions

## SAFETY TESTED

By external functional tests and German Approval Certificate (abP)

## NEW SYSTEM ADHESIVE

For even better performance in application and scope

## MAXIMUM ELASTICITY

Highly flexible joining tapes provide a watertight seal under hydrostatic pressure

## HIGHLY RESISTANT

Resistance against root penetration, weather and UV-resistant

## HIGH CHEMICAL RESISTANCE

offering protection against Radon



# Sikadur-Combiflex® TF System

## TYPICAL APPLICATIONS

**BASEMENTS**



**TRANSPORT CONSTRUCTIONS  
(BRIDGES/TUNNELS)**



**WATERWORKS**



**WASTE WATER FACILITIES**



**SWIMMING POOLS**



**POWER STATIONS AND ENGINEERING  
CONSTRUCTIONS**



## System benefits:

- Watertight in positive and negative water pressure
- Waterbar profiles allow flexible use
- Optimal solution for new buildings and renovation
- Highly flexible and high load-bearing strength
- Also possible with high movements through the formation of expansion loops
- Suitable for different joint widths
- UV-resistant

## Further advantages for respective applications:

### **BASEMENTS**

- Tested in combination with the SikaProof® FBV technology
- Radon resistant

### **TRANSPORT CONSTRUCTIONS (BRIDGES AND TUNNELS)**

- De-icing salt-resistant
- Use in accordance with BAST standard drawing FUG 4 sheet 2 possible

### **WASTE WATER FACILITIES**

- Resistant to effluent and municipal waste water

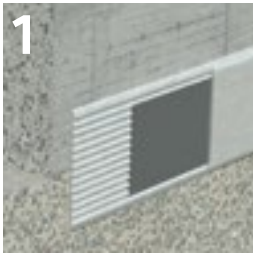
### **SWIMMING POOLS**

- Resistant to chlorinated water
- Can take coatings, tiles or plastic membrane

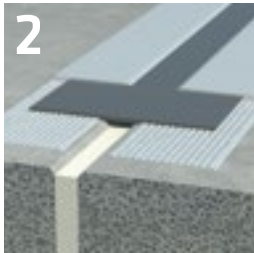


# Sikadur-Combiflex® TF System

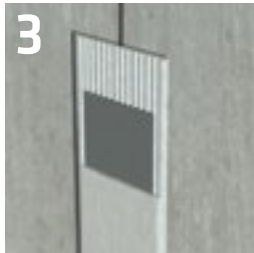
## OPPORTUNITIES FOR USE



1 Construction joints



2 Expansion joints



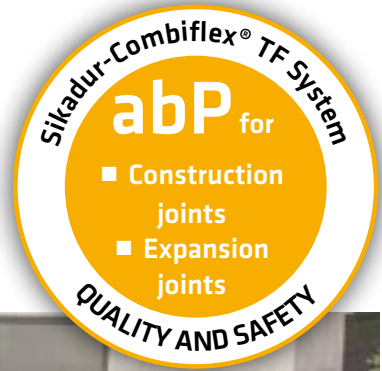
3 Joints for precast elements



4 Connection joints to existing components



5 Slabs



**6**  
Renovation of construction and expansion joints (negative water pressure)



**7**  
Sealing cracks



**8**  
Load-bearing joint construction



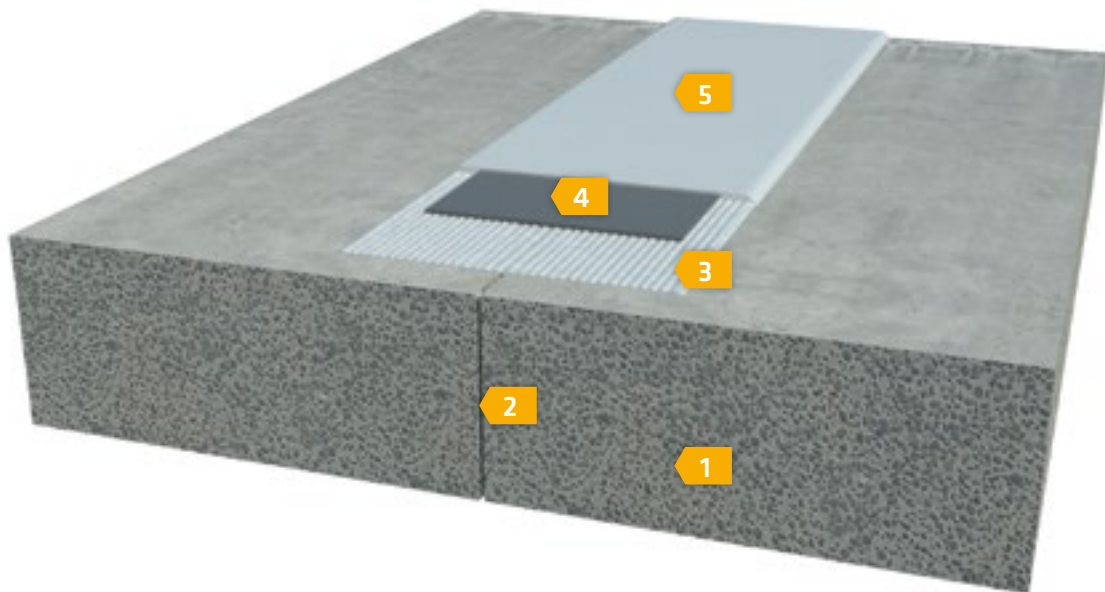
**9**  
Details and material transitions

# Sikadur-Combiflex® TF System

## SYSTEM SOLUTIONS

### JOINTING TAPES FOR CONSTRUCTION JOINTS

- Use of 1 mm Sikadur-Combiflex® SG jointing tapes
- Depending on requirement, different waterbar widths available
- Admissible according to German Approval Certificate (abP)
- Tested against positive and negative water pressure
- Maximum admissible expansion of cracks and construction joints 1 mm

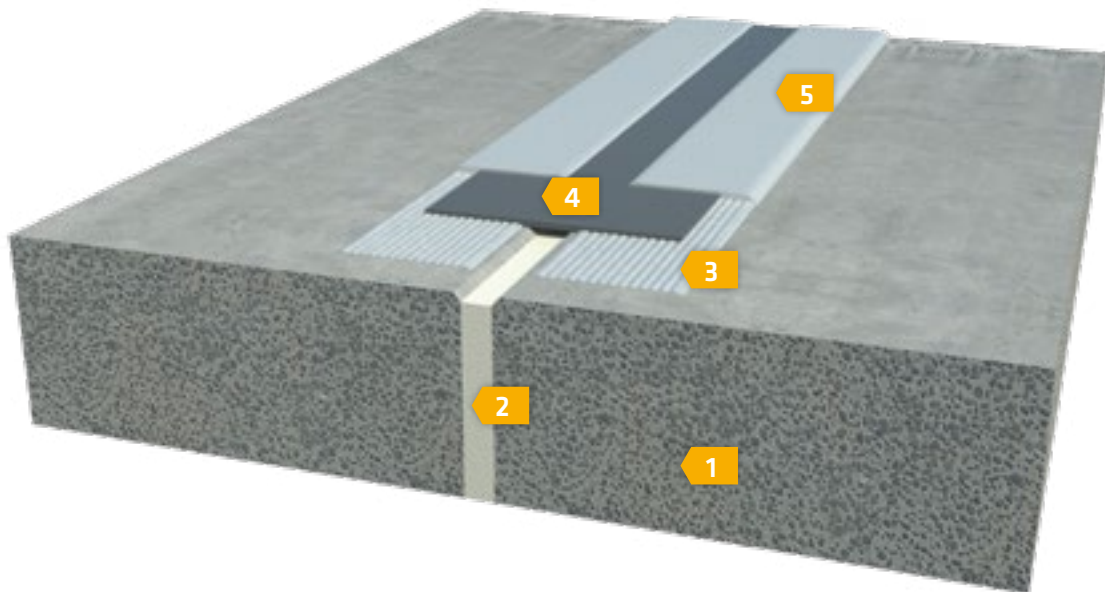


- 1 Concrete construction
- 2 Construction joint
- 3 Base layer Sikadur-Combiflex® CF Adhesive
- 4 Sikadur-Combiflex® SG 1 mm jointing tapes
- 5 Top coat Sikadur-Combiflex® CF Adhesive



## JOINTING TAPES FOR EXPANSION JOINTS

- Use of Sikadur-Combiflex® SG 2 mm jointing tapes
- Expansion joint width should be dimensioned depending on water pressure and deformation based on processing direction – different waterbar widths are available
- Admissible according to German Approval Certificate (abP)
- Tested against positive and negative water pressure (support construction required)
- Admissible deformation acc. to the German Approval Certificate up to 20 mm



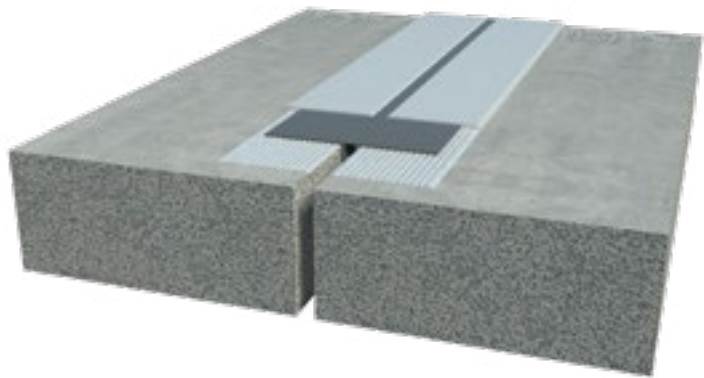
- 1 Concrete construction
- 2 Expansion joint with supporting construction (joint filling)
- 3 Base layer Sikadur-Combiflex® CF Adhesive
- 4 Sikadur-Combiflex® SG 2 mm jointing tapes
- 5 Top coat Sikadur-Combiflex® CF Adhesive

# Sikadur-Combiflex® TF System

## SYSTEM SOLUTIONS

### WATERBAR PROFILES LFT 330 AND LFT 240

- For retrospective sealing of expansion joints for in-situ concrete components and precast elements
- 2 different widths available
- 4 mm material thicknesses and a formed loop offer a high safety reserve
- Can be used according to BAST standard drawing FUG 4, sheet 2



### WATERBAR PROFILES DFT 330/3

- External expansion joint waterbar with concreting profiles both sides
- Use for in-situ concrete components such as base slabs and walls
- Can be combined with Sikadur-Combiflex® TF - jointing tapes and welded (factory-produced transition shaped part required)



## WATERBAR PROFILES DFT 330/3 KF, KA AND KI

- External expansion joint waterbars with bonding flange on one side for connection joints to existing components and existing construction
- Available in different geometries
- Technically and commercially attractive alternative to clamp construction
- Can be combined with Sikadur-Combiflex® TF - jointing tapes and welded (factory produced joint intersections)



DFT 330/3 KI



DFT 330/3 KF



DFT 330/3 KA

# Sikadur-Combiflex® TF System

## SYSTEM SOLUTIONS

### WATERBAR PROFILES FAT 130/3

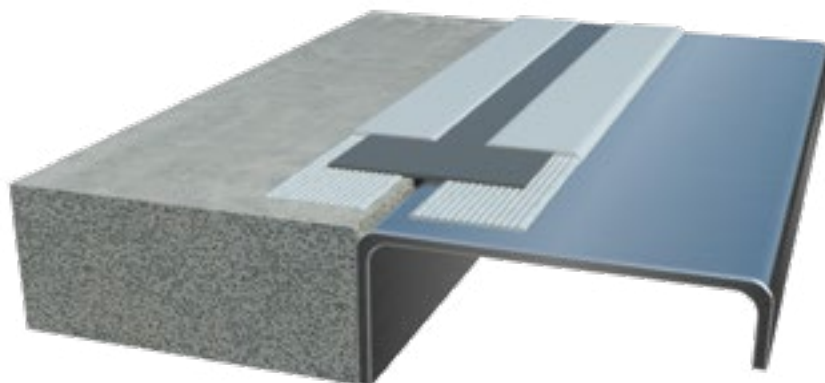
- Joint connection waterbar with bonding flange on one side for connection joints to existing components and existing construction



### CONNECTIONS AND MATERIAL TRANSITIONS

- Flexible production of connections and material transitions
- Note substrate preparations depending on material

Note: It should be taken into consideration that exclusively impermeable concrete bases are a component of the German Approval Certificate (abP). All deviating substrates must be agreed with Sika Technical Department.



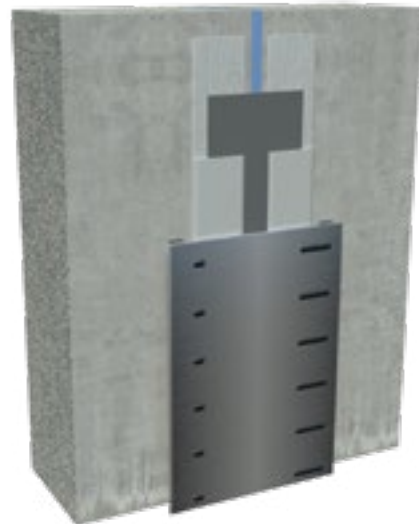
## DETAILS

- Weldable thermoplastic elastomer (TPE) material allows a variety of shaped parts such as angled and mirrored corners, pipe collars or angulations to be executed.



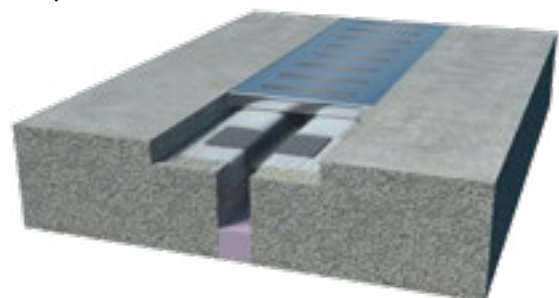
## PROTECTIVE TRIM / SUPPORT CONSTRUCTION

- Mechanical protection for expansion joints in trafficked areas (e.g. walking, driving or other mechanical demands)
- Supporting construction (e.g. drag plate construction) with negative water pressure



## VEHICLE LOAD-BEARING EXPANSION JOINTS

- Use of Sika®Floor joint profile recommended\*



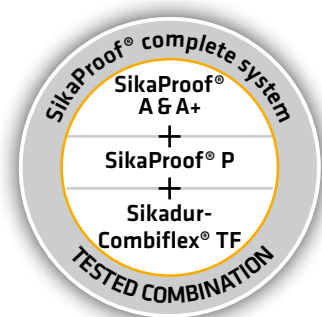
\*Not available in the UK

**Note: The sealant must not be driven over directly.**



# TESTED COMBINATION with SikaProof® - FRESH CONCRETE COMPOSITE SYSTEM

THE Sikadur-Combiflex® TF system is also a component of the SikaProof® complete system. The flexibility makes it a system which can meet all requirements and forms of details and transitions. The combination of SikaProof® A and A+, and SikaProof® P has been tested in external functional tests and therefore offers maximum safety.



Transitions as detail solution: Sikadur-Combiflex® TF System on SikaProof® complete system

# Sikadur-Combiflex® TF System

## EASY WATERPROOF SEALING OF STRUCTURES

### SYSTEM COMPONENTS\*



SG jointing tapes	Overall width (mm)	Packaging unit	Item no		
<b>1mm jointing tapes</b>					
Sikadur Combiflex SG-10 M 100 (25m/Rol) m	100	25 m roll	406601		
Sikadur Combiflex SG-10 M 200 (25m/Rol) m	200	25 m roll	406599		
Sikadur Combiflex SG-10 M 300 (25m/Rol) m	300	25 m roll	406594		
Sikadur Combiflex SG-10 P 400 (25m/Rol) m	400	25 m roll	406615		
<b>2mm jointing tapes</b>					
Sikadur Combiflex SG-20 M 200 (25m/Rol) m	200	25 m roll	406605		
Sikadur Combiflex SG-20 M 300 (25m/Rol) m	300	25 m roll	406603		
Sikadur Combiflex SG-20 P 400 (25m/Rol) m	400	25 m roll	406621		
Sikadur-Combiflex® TF profiles For in-situ concrete connections, Building separation joints	Overall width (mm)	Expansion part width (mm)	Waterbar thickness (m)	Profile height (mm)	Number of locking anchors
DFT 330/3	330	104	4	30	6
DFT 330/3 KF	330	104	4	30	3
LFT 240	240	-	4	-	-
LFT 330	330	-	4	-	-
FAT 130/3 K	Profile height 180 mm, cover plate 30 mm, locking anchor (f) 35 mm				
DFT 330/3 KI	as DFT 330/3 KF, but angled				
DFT 330/3 KA	as DFT 330/3 KF, but angled				
Sikadur-Combiflex® CF Adhesive	Packaging unit				
Combi-container A+B	6 kg				

\*Availability varies by country. Please check specific product availability locally.

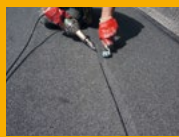
# SIKA FULL RANGE SOLUTIONS FOR CONSTRUCTION:



LIQUID APPLIED ROOFING



SINGLE PLY ROOFING



BITUMINOUS ROOFING



CONCRETE



CONCRETE REPAIR



STRUCTURAL STRENGTHENING



BUILDING FINISHING



WATERPROOFING



JOINT SEALING



FAÇADES



FLOORING



INDUSTRY



DISTRIBUTION



BUILDING TRUST

## FOR MORE INFORMATION:



### WHO WE ARE

Sika Limited and Sika Ireland Limited are part of the global Sika Group, specialising in the manufacture and supply of chemical based products. Sika has a leading position in the development and production of systems and products for bonding, sealing, damping, reinforcing, and protecting in the building sector and the motor vehicle industry. Sika has subsidiaries in 100 countries around the world and manufactures in over 300 factories. With more than 25,000 employees Sika generates annual sales of CHF 7.9 billion (£6.14 bn). We are also committed to providing quality, service, safety and environmental care.

In the UK and Ireland, we provide market-leading solutions for concrete, waterproofing, roofing, flooring, refurbishment, sealing & bonding, and industry, and have manufacturing sites in Welwyn Garden City, Preston, Leeds, Wishaw and Dublin with more than 920 employees and a turnover of more than £290 million.

The information, and, in particular, the recommendations relating to the application and end use of Sika® products, are given in good faith based on Sika's current knowledge and experience of the products when properly stored, handled and applied under normal conditions. In practice, the differences in materials, substrates and actual site conditions are such that no warranty in respect of merchantability or of fitness for a particular purpose, nor any liability arising out of any legal relationship whatsoever, can be inferred either from this information, or from any written recommendations, or from any other advice offered. The proprietary rights of third parties must be observed. Please refer to our homepage [www.sika.co.uk](http://www.sika.co.uk) for our current standard terms & conditions applicable to all orders. Users should always refer to the most recent issue of the Product Data Sheet for the product concerned, copies of which will be supplied on request.



### SIKA LIMITED

Head Office  
Watchmead  
Welwyn Garden City  
Hertfordshire, AL7 1BQ  
United Kingdom

### Contact

Phone +44 800 292 2572  
Fax +44 1 707 329129  
E-Mail [waterproofing@uk.sika.com](mailto:waterproofing@uk.sika.com)  
[www.sikawaterproofing.co.uk](http://www.sikawaterproofing.co.uk)  
@SikaLimited

### SIKA IRELAND LIMITED

Sika House  
Ballymun Industrial Estate  
Dublin 11  
D11 DA2V  
Ireland

### Contact

Phone +353 1 862 0709  
Fax +353 1 862 0707  
E-Mail [info@ie.sika.com](mailto:info@ie.sika.com)  
[www.sika.ie](http://www.sika.ie)  
@Sikalreland

BUILDING TRUST

