

6

5

4

3

2

1

D

C

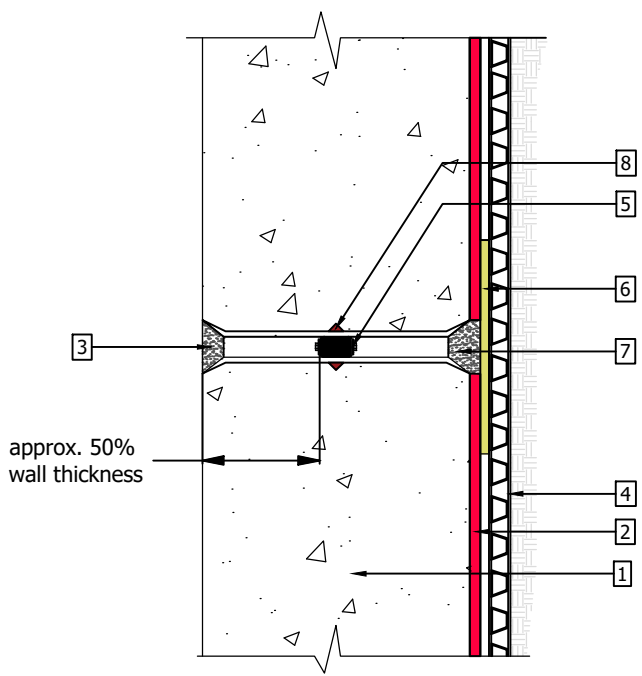
B

A

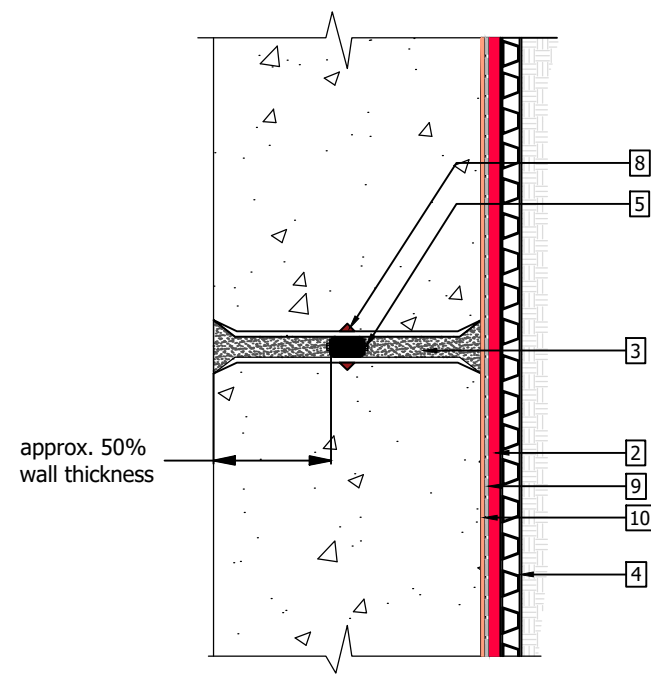
Drawing Reference:

**KEY:**

- SIKA WATERTIGHT CONCRETE
- SIKAPROOF A+08 MEMBRANE on suitable substrate
- SIKA MONOTOP 4012 if required for aesthetics
- SIKA DRAIN-850 GEO
- SIKA X-PLUG
- SIKAPROOF PATCH-200 B
- SIKA MONOTOP 4012
- Min.75mm RC cover around SIKASWELL A RING/S2 and as per PDS
- SIKAPROOF ADHESIVE-02
- SIKAPROOF PRIMER-02



**PRE-APPLIED**



**POST-APPLIED**

Revision	Description	By:	Aprvd By:	Date

ALL DETAIL DRAWINGS ARE FOR UK USE ONLY, DO NOT SCALE FROM DRAWING

THIS DRAWING IS THE CONFIDENTIAL PROPERTY OF SIKALIMITED AND MUST NOT BE REPRODUCED EITHER WHOLLY OR PARTLY. ALL RIGHTS IN RESPECT OF PATENTS, DESIGN AND COPYRIGHTS ARE RESERVED. SIKALIMITED. WWW.SIKA.CO.UK

	<b>SIKA LIMITED</b>		
	Watchmead Welwyn Garden City Hertfordshire, AL7 1BQ	Tel: +44 (0) 1707 394 444 Web: <a href="http://gbr.sika.com">http://gbr.sika.com</a> Email: <a href="mailto:waterproofing.technical@uk.sika.com">waterproofing.technical@uk.sika.com</a>	

Drawn by	Checked by	Approved by	Date

Description **SIKAPROOF A+ & SIKALIMITED WATERTIGHT CONCRETE - TIEBAR SEAL X-PLUG**

Drawing No. SP+W03	Issue B	Sheet 1 / 1
-----------------------	------------	----------------

6

5

4

3

2

1

D

C

B

A