



# SOLUTIONS FOR ROOFS

Sikaplan<sup>®</sup> RoofPro  
PVC Membranes

  
Roof Assured  
By Sika<sup>®</sup>



# SINGLE PLY PVC WATERPROOFING SYSTEMS FOR FLAT ROOFS



**Sika® single ply roofing offers exceptional quality in construction, convenience in installation and flexibility in use – underscored by excellent weathering characteristics and the reliability demonstrated by a successful track record in mainland Europe since 1962 and in Britain since 1972.**

Sikaplan® RoofPro roof waterproofing membranes are suitable for use with virtually all commonly used substrates – including both new and refurbishment applications. They can be installed in either a warm or cold roof build up – depending upon preference, the membranes can be applied with mechanical fixings or adhered. The waterproofed surfaces may be flat, sloped, vertical, curved – convex or concave, waveform, domed, etc. The British Board of Agrément (BBA) certified the Sikaplan® RoofPro membranes, and are currently stated to have a minimum life expectancy, in their opinion, of in excess of 35 years.

Sikaplan RoofPro waterproofing membranes are frequently chosen for self-build, residential and domestic projects ranging from conservatories and extensions to dormers, bays and garages. Only available to trained Roof Assured by Sika Installers, homeowners are able to achieve not only long-lasting, durable waterproofing, but they are also able to achieve a highly aesthetic modern or traditional look that is pleasing on the eye.

## SYSTEM FEATURES:

- **Quick and easy application** – achieving initial waterproofing in unrivalled time
- **The flexibility and elasticity of the membranes** – give extremely high fatigue resistance
- **Light in weight**
- **Impermeable to water yet allows water vapour to escape** – to help minimise the risk of interstitial condensation occurring
- **Minimum disruption on site** – no naked flames or hot pots on the roof, reduces the potential health and safety risks
- **Long working life expectancy and proven track record** – giving clients peace of mind
- **Low maintenance membranes** – will not require any form of post installation treatments, such as paints or re-saturants
- **BBA Accreditation** (BBA certificate 09/4668)



# INSTALLATION

## Sikaplan® DM-15 RoofPro MF

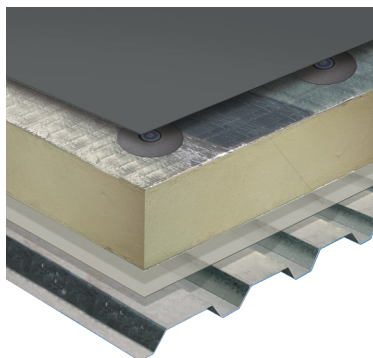


Sikaplan® DM-15 Roofpro membranes are specifically formulated and manufactured on computer controlled calendaring machines, using only ingredients of the best quality. This ensures consistent product standards that aid the installation and longevity of the waterproofing system. Calendaring ensures the most thorough mixing of the constituent components of the formulation along with the best compaction of the material, producing the densest mix and avoiding entrained air in the completed sheets for instance. We also manufacture the sheets to the stated thickness and do not deliberately exploit the minus 5% tolerance allowance permitted in the manufacturing standards. This ensures that the full performance of the sheet in terms of life expectancy and robustness will be met and give true value for money.

Sikaplan® DM-15 Roofpro MF is intended to be used solely as an exposed roof waterproofing membrane, restrained against wind uplift forces by mechanical fasteners. Sikaplan® DM-15 Roofpro MF membrane has a layer of extremely strong polyester reinforcement in the middle of its thickness. This is designed to virtually eliminate shrinkage and provide the necessary dimensional stability. It also contains ultra-violet stabilisers and fire retardants. Sikaplan® DM-15 Roofpro MF is highly resistant to ageing and industrial pollutants and will require no further surface treatments or coverings or any other maintenance throughout its service life.

The Sikaplan® DM-15 Roofpro MF membrane is mechanically attached to the substrate by the use of 'pressure plates' located in the side laps of the waterproofing sheets. Placing the plates in the side laps ensures they are weather tight as they are encapsulated within the laps itself. When the calculated wind loads are very high, it is possible to locate additional plates in the main area of the sheet. It is essential and established good practice in the industry, that in order to ensure full security of the membrane against wind forces, that the membrane is mechanically fixed at all changes of plane and around perimeters.

### Sikaplan® DM-15 RoofPro MF PRODUCT RANGE



#### Example Mechanically Fixed Warm Roof Build-Up:

- Sikaplan DM-15 RoofPro MF Membrane
- Fixings, Plates & Tubes as required
- Foil Faced PIR Insulation
- S-Vap 500E Air and Vapour Control Layer
- Structural Substrate

#### Detailing & Upstands:

- Sikaplan SG Detail Membrane  
or Sikaplan DM-15 RoofPro MF Membrane

#### BENEFITS:

- Speed of installation
- Lightweight
- Moisture vapour permeable
- Long working life expectancy and proven track record
- Low maintenance
- 1.5mm thick Lead Grey RAL 7012 Membrane
- Lead Batten & SE Decor profiles - achieve a highly aesthetic finish
- Up to 20 Year Product Guarantee
- BBA Accreditation (BBA certificate 09/4668)



# INSTALLATION

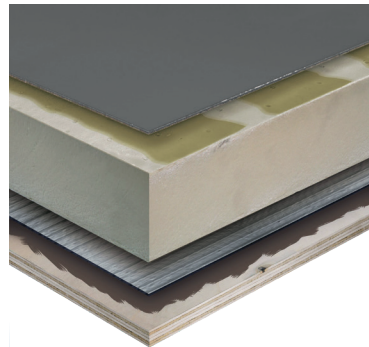
## Sikaplan® DM-15 RoofPro Adhered



Sikaplan® DM-15 Roofpro Adhered is intended to be used solely as an exposed roof waterproofing membrane restrained against wind uplift forces, by adhesion to a suitable substrate. It also contains ultra-violet stabilisers and fire retardants. Sikaplan® DM-15 Roofpro Adhered is highly resistant to ageing and industrial pollutants and will require no further surface treatments or coverings, or any other maintenance throughout its service life.

Sikaplan® DM-15 Roofpro Adhered membrane has a layer of random glass fibres in the middle of its thickness. This feature is designed to virtually eliminate shrinkage and provide the necessary dimensional stability. It also incorporates a polyester fleece imbedded to the underside of the membrane, to provide a strong key for adhered applications. Sikaplan® DM-15 Roofpro Adhered is often used for exposed membrane applications, where aesthetics are important or mechanical fasteners are inconvenient or not possible.

### Sikaplan® DM-15 RoofPro Adhered PRODUCT RANGE



#### Example Adhered Warm Roof Build-Up:

- Sikaplan DM-15 RoofPro Adhered Membrane
- C300 Field Area Adhesive
- Glass-Tissue Faced PIR Insulation
- S-Vap 5000 E SA - Self-Adhered Air and Vapour Control Layer
- Sika Primer 600
- Timber Structural Substrate 18mm

#### Detailing & Upstands:

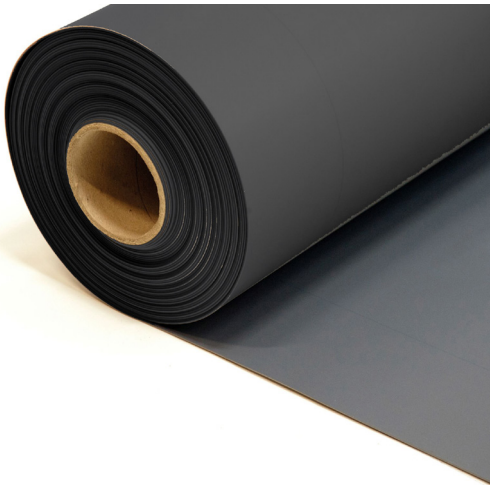
- Sikaplan SG Detail Membrane or Sikaplan DM-15 RoofPro MF Membrane
- C733 Contact Adhesive

#### BENEFITS:

- Speed of installation
- Lightweight
- Moisture vapour permeable
- Long working life expectancy and proven track record
- Low maintenance
- BBA Accreditation (BBA certificate 09/4668)



# THE RIGHT ROOFING SOLUTION, FOR EVERY PROJECT



## Sikaplan® DM-15 RoofPro MF

**Mechanically Fastened, High Performance, Single Component, Solvent-free and low VOC Roof Waterproofing PVC Membrane**

Sikaplan® DM-15 RoofPro MF (thickness 1.5mm) is a polyester reinforced multilayer, synthetic roof waterproofing sheet based on premium-quality polyvinyl chloride (PVC) according to EN 13956.

### Used for:

- Waterproofing membrane for exposed flat roofs
- Mechanically fastened roofing systems
- Detailing

### Characteristics and Advantages:

- Resistant to permanent UV irradiation
- Resistant to permanent wind exposure
- High water vapour permeability
- Resistant to all common environmental influences
- Hot air welding without use of open flames
- Recyclable



## Sikaplan® DM-15 RoofPro Adhered

**Fleeceback, High Performance, Single Component, Solvent-free and low VOC Roof Waterproofing PVC Membrane**

Sikaplan® DM-15 RoofPro Adhered is a multi-layer, synthetic roof waterproofing sheet based on premium-quality polyvinyl chloride (PVC) with inlay of glass non-woven and polyester fleece backing according to EN 13956.

### Used for:

- Roof waterproofing membrane for exposed flat roofs

### Characteristics and Advantages:

- Resistant to permanent UV irradiation
- High dimensional stability due to glass fleece inlay
- High water vapour permeability
- Resistant to all common environmental influences
- Compatible to old bitumen due to felt backing
- Hot air welding without use of open flames
- Recyclable

## Accessories

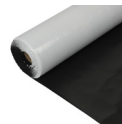
■ **Sika® METAL** - Galvanised steel that has a top layer of Type S membrane factory laminated to one side and protective enamel the other. Supplied as flat sheet, Sikaplan® RoofPro Metal is cut and bent to form perimeter, drip edge, penetration and any other necessary profiles to which the membrane is secured by welding



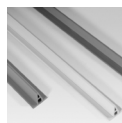
■ **Sika® C300 Adhesive** - One-component polyurethane based adhesive curing by humidity for the adhesion of Sikaplan® DM-15 Roofpro Adhered



■ **Sika® S-Felt Type T** - A white 300 g/m<sup>2</sup> polyester fleece which is intended to be used as both a levelling and separation layer preventing contact between the waterproofing sheets and any rough/abrasive surfaces or incompatible materials. S-Felt T can also be used between membrane and any protective topping or pavers



■ **Sika® SBV** - PVC skinned polyester fleece for use as a heavy-duty levelling, separation and protection layer



■ **Sika® SE Profiles** - Produced by extrusion with the same high quality compounds as used for Sikaplan® DM-15 Roofpro roof waterproofing membranes. Sika® SE Profiles are used to imitate a traditional standing-seam metal roof



■ **Sika® SE Pre-Formed Corners** - Pre-formed corner pieces for neatly forming corner details

# SIKA FULL RANGE SOLUTIONS FOR CONSTRUCTION:



LIQUID APPLIED ROOFING



SINGLE PLY ROOFING



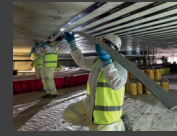
BITUMINOUS ROOFING



CONCRETE



CONCRETE REPAIR



STRUCTURAL STRENGTHENING



BUILDING FINISHING



WATERPROOFING



JOINT SEALING



FAÇADES



FLOORING



INDUSTRY



DISTRIBUTION



BUILDING TRUST

## FOR MORE INFORMATION:

### WHO WE ARE

Sika Limited and Sika Ireland Limited are part of the global Sika Group, specialising in the manufacture and supply of chemical based products. Sika has a global leading position in the development and production of systems and products for bonding, sealing, damping, reinforcing, and protecting in the building sector and motor vehicle industry. Sika has subsidiaries in 103 countries, manufactures in over 400 factories, and develops innovative technologies for customers around the world that facilitate the sustainable transformation of the construction and transportation industries. With more than 33,000 employees, the company generated annual sales of CHF 10.5 billion (£9.4 bn) in 2022.

In the UK and Ireland, we provide market-leading solutions for building finishing, concrete, waterproofing, roofing, flooring, refurbishment, sealing & bonding, and industry, and have manufacturing sites in Welwyn Garden City, Preston, Leeds, Wishaw, Redditch, and Dublin with more than 900 employees and a turnover of more than £420 million.

The information, and, in particular, the recommendations relating to the application and end use of Sika® products, are given in good faith based on Sika's current knowledge and experience of the products when properly stored, handled and applied under normal conditions. In practice, the differences in materials, substrates and actual site conditions are such that no warranty in respect of merchantability or of fitness for a particular purpose, nor any liability arising out of any legal relationship whatsoever, can be inferred either from this information, or from any written recommendations, or from any other advice offered. The proprietary rights of third parties must be observed. Please refer to our homepage [www.sika.co.uk](http://www.sika.co.uk) for our current standard terms & conditions applicable to all orders. Users should always refer to the most recent issue of the Product Data Sheet for the product concerned, copies of which will be supplied on request.



### SIKA LIMITED

Head Office  
Watchmead  
Welwyn Garden City  
Hertfordshire, AL7 1BQ  
United Kingdom

### Contact

Phone +44 1 707 394444  
Fax +44 1 707 329129  
E-Mail [enquiries@uk.sika.com](mailto:enquiries@uk.sika.com)  
[www.sika.co.uk](http://www.sika.co.uk)  
X @SikaLimited

