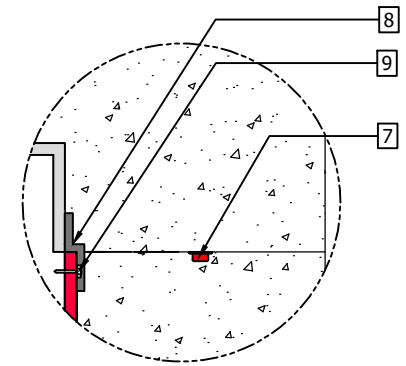
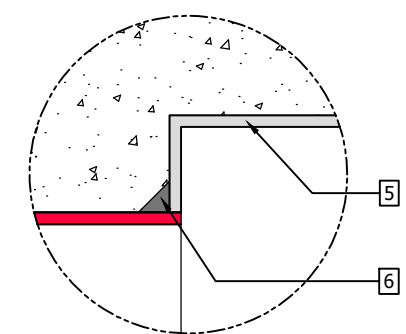


B-B SECTION BETWEEN PILE



Drawing Reference:

KEY:

- SIKA WATERTIGHT CONCRETE
- SIKAPROOF A+08 MEMBRANE on suitable substrate
- Contiguous pile
- Contiguous pile with suitable facing
- SIKALASTIC 1K (Waterproofing) or SIKADUR 32+ (Gas & Waterproofing)
- SIKADUR COMBIFLEX ADHESIVE 40x40mm fillet
- SIKASWELL A-2010 adhered with SIKASWELL S-2 (min.75mm Reinforced Concrete cover). Joint prepared and reinforced as per Sikaswell Method Statement
- SIKADUR COMBIFLEX ADHESIVE 5x80mm
- Mechanical fixing
- Concrete facing to pile

Revision	Description	By:	Aprvd By:	Date
ALL DETAIL DRAWINGS ARE FOR UK USE ONLY, DO NOT SCALE FROM DRAWING				
THIS DRAWING IS THE CONFIDENTIAL PROPERTY OF SIKA LIMITED AND MUST NOT BE REPRODUCED EITHER WHOLLY OR PARTLY. ALL RIGHTS IN RESPECT OF PATENTS, DESIGN AND COPYRIGHTS ARE RESERVED. SIKA LTD. WWW.SIKA.CO.UK				
 SIKA LIMITED Watchmead Welwyn Garden City Hertfordshire, AL7 1BQ		Tel: +44 (0) 1707 394 444 Web: http://gbr.sika.com Email: waterproofing.technical@uk.sika.com		
		Drawn by	Checked by	Approved by
Description SIKAPROOF A+ & SIKA WATERTIGHT CONCRETE - SIKAPROOF A+ ON SHEET PILE (OPTION 3)				
Drawing No. SP+W18		Issue B	Sheet 1 / 1	