



# SIKA AT WORK

## NEW BUILD PROJECT

## STOCKPORT INTERCHANGE

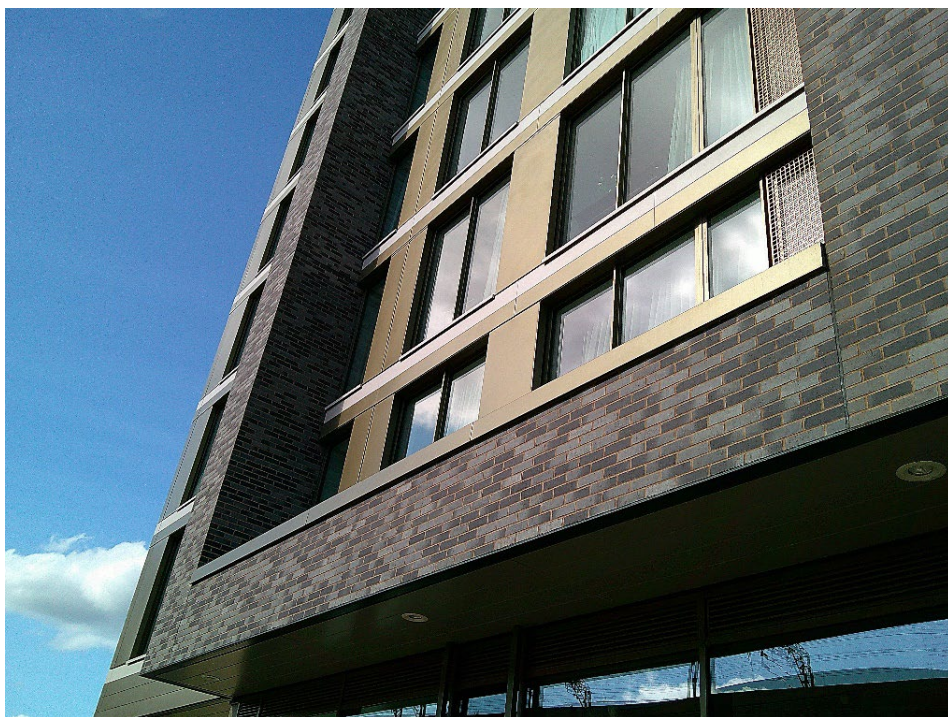
BUILDING FINISHING: Historic KL Pointing Mortar

COLOUR: Mid-Grey



# NEW BUILD PROJECT

## STOCKPORT INTERCHANGE



### PROJECT DESCRIPTION

A new mixed-use development, which includes high-quality residential (126 two bedroom and 70 one bedroom) apartments, has been completed with clay brick cladding, with Sika Historic KL pointing mortar specified to match the characteristics of the clay tiles.

This mixed-use development was part of the first phase of the regeneration scheme for Stockport Town Centre West, which also included the redevelopment of Stockport bus station into a modern transport interchange and a rooftop park, providing a new green space for residents. With a head office in Manchester, national architects Leach Rhodes Walker designed the new 14-storey commercial and residential building with a combination of clay brick tiles and aluminium cladding.

Sika Historic KL mortar, specified in a mid-grey colour, was applied to the vertical and horizontal joints of the brick cladding system by installers Precision Facades, and helps to complement the different brick colours chosen for the facades. This visually striking development blends in perfectly with the existing town centre landscape.

Designed for gun-injection for a quick and accurate application, the Sika range of pointing mortars include solutions for sound brickwork and masonry, and brick tiles in historic building applications. Choose from our wide range of mortar colours for a consistent colour and finish to brick cladding projects.

### PROJECT SOLUTIONS

Sika Historic KL pointing mortar  
Colour: Mid-Grey

### PROJECT CREDITS

Client:	Joint venture between Stockport Council, Transport for Greater Manchester, Greater Manchester Combined Authority and development partners Rise Homes and CityHeart
Architect:	Leach Rhodes Walker
Main Contractor:	Willmott Dixon
System:	Corium Clay Brick Cladding
Installer:	Precision Facades