



EXTERNAL WALL INSULATION SYSTEMS



BUILDING TRUST



YOUR EXTERNAL WALL INSULATION EXPERTS

EWI systems from Sika incorporate high-performance render finishes with a variety of insulation products. The premium quality Sika EWI system creates attractive, energy-saving facades for both new build and refurbishment properties.

We offer a unique range of EWI renders and finishes, to create a façade which supports the reduction of our carbon footprint and lowers energy bills for the building.

Sika renders also provide excellent weather protection, meeting the requirements of Local Authority Building Control (LABC) and Premier Guarantee Zone 4 'Severe weather rating criteria' for the application of renders onto a wide range of substrates and system build constructions.

Sika EWI systems are fully warranted and are tested to recognised European standards. These systems are designed to achieve a minimum 30-year design life.

- Sika has an integrated management system which is externally accredited to: BS EN ISO 9001, BS EN ISO 14001, BS ISO 45001 & BES 6001.
- Not content with just manufacturing market leading products, we also offer a 'complete' package to customers and specifiers with industry sector experts available to provide unsurpassed levels of free technical advice, specifications and CAD details.
- Sika is active in 100 countries on all continents with strong local organisations. With more than 300 plants worldwide and a network of 21 Global Technology Centres, Sika takes the lead in long-term research programmes and the development of new innovative solutions.

WHY CHOOSE EWI?

External walls are the most significant contributor to energy loss, accounting for over 35% of heat loss from the home. Poorly insulated walls allow expensive heat to seep out through gaps and cracks leading to a colder living environment and higher energy bills.

Properties with narrow cavities or solid wall construction can be difficult to insulate. Sika EWI Systems provides the solution, installing insulation to the façade of the property rather than the internal walls.

This highly effective solution significantly reduces heat loss through the external envelope, while also improving the appearance and kerb appeal of the property.

External walls can account for over

35%

of heat loss from the home



WHAT DOES EWI DO?

Think of the Sika EWI system as wrapping the building in a blanket to provide an extra energy-efficient layer. This additional layer creates a warmer, more comfortable environment within the home resulting in reduced energy usage and lower bills. As the risk of fuel poverty becomes more apparent for a growing number of the population, the reduction in heating costs will have a positive impact on many families.

Warmer internal walls also significantly reduce the risk of condensation and mould growth, improving living conditions for those within the property.

Not only this, but it also reduces the carbon footprint of the home. In a world increasingly focused on combating climate change, any initiative that minimises CO2 emissions is a step in the right direction.



**SCAN THE QR CODE OR VISIT
SIKA.CO.UK/EXTERNALWALLINSULATION
FOR MORE INFORMATION.**





SWANSEA COUNCIL
Refurbishment

U-Value
AFTER
0.28
W/m²K

PASSIVE HOUSE
Retrofit



“ On behalf of Swansea Council, can I express my gratitude to Sika as both a product and a company. Over the past 3 years the collaboration has proved to be so valuable in helping Building Services work towards its key principles and getting the best for our local tenants and their communities.

Ashley Taylor
Planning and Contracts Manager,
Swansea Council.

SIKA EWI IN PRACTICE
WHETHER RETROFIT, REFURBISHMENT, NEW BUILD OR COMMERCIAL, **SIKA HAS THE EWI SOLUTION.**

56 THE AVENUE
New Build



U-Value
AFTER
0.14
W/m²K



SELFRIDGES BUILDING, BIRMINGHAM
Commercial



OUR SERVICE

The Sika reputation has not only been built on the quality products we offer, but through the outstanding level of service provided throughout every step of the way.

From dedicated Specification Managers on hand from the start to ensure each individual requirement is met, to site support and training being made available through the entire project journey, Sika provides the complete solution for any project.

DEDICATED SPECIFICATION MANAGER



ACCESS TO REGISTERED APPLICATORS



NATIONAL DISTRIBUTION



TECHNICAL SUPPORT



SITE SUPPORT & TRAINING



EXPERIENCED CUSTOMER SERVICES TEAM



SAMPLES



SPECIFICATION JOURNEY

HOW WE EXCEED YOUR EXPECTATIONS FROM START TO FINISH



INITIAL ENQUIRY

Contact made between Project Leader and Sika



FACT FINDING

Thermal and fire performance of current building substrate analysed



DESIGN TEAM MEETINGS

Regular communication between Sika and design teams to resolve any issues prior to work commencing



SPECIFICATION CREATED

Developed to suit strict project requirements



REGISTERED CONTRACTOR

Recommending the most suitable contractor for the project



PRE-START MEETING

Carried out on site with key project stakeholders



SITE MONITORING

Regular site visits to ensure proper application and provide further technical support



POST INSTALLATION INSPECTION

Completed project is inspected and warranty issued if requested

OUR SPECIFICATIONS

TRUST THE HIGHLY EXPERIENCED TEAM TO DEVELOP A COMPREHENSIVE PROJECT SPECIFICATION, BESPOKE TO THE THERMAL AND FIRE PERFORMANCE, AND U VALUE CONDENSATION ANALYSIS.

- NBS specification to suit project requirements
- Product and material data sheets
- Construction details - full suite of standard details provided, plus bespoke construction details on request
- U-Value calculations & condensation risk analysis available as required
- Mechanical fixing pattern diagram

Manufacturer	Name	Thickness [m]	Lambda [W/(mK)]	Q	R [m ² K/W]
		0.0100	0.032	0.600	0.0400
		0.1000	0.032		0.0167
		0.0050	0.200		0.0250
		0.3100	0.960		0.3229
		0.0125	0.180		0.0694
					0.1300
					0.4375

$R_t = R_e + \sum R_i + R_{se} = 3.73 \text{ m}^2\text{K/W}$

Correction to U-value for R_t according to BS EN ISO 6946 Annex F

Air gaps and fixings corrections need not be applied, as their total effect is less than 3% (Annex D BS 6846:1996)

$U = 1/R_t + \sum AU = 0.28 \text{ W/(m}^2\text{K)}$

Legend:
 Q - The physical values of the building materials has been graded by their level of quality. These 5 levels are the following:
 A: Data is entered and validated by the manufacturer or supplier. Data is continuously tested by 3rd party.
 B: Data is entered and validated by the manufacturer or supplier. Data is continuously tested by 3rd party.
 C: Data is entered and validated by the manufacturer or supplier.
 D: Information is entered by BuildDesk without special agreement with the manufacturer, supplier or others.
 E: Information is entered by the user of the BuildDesk software without special agreement with the manufacturer, supplier or others.

PEACE OF MIND

WITH SIKA, YOU CAN REST ASSURED THAT OUR TEAM OF EXPERTS ARE AVAILABLE TO PROVIDE ADVICE AND SUPPORT THROUGHOUT YOUR ENTIRE PROJECT, FROM SPECIFICATION TO COMPLETION.

TECHNICAL SUPPORT

- Access to a network of registered applicators
- Training available to stakeholders, including installers, clerk of works, and design managers
- Nationwide project technical support provided via phone, email or in person
- Funding assistance for eligible, government funded, EWI projects
- Sika products are registered with RIBA Product Selector / NBS+

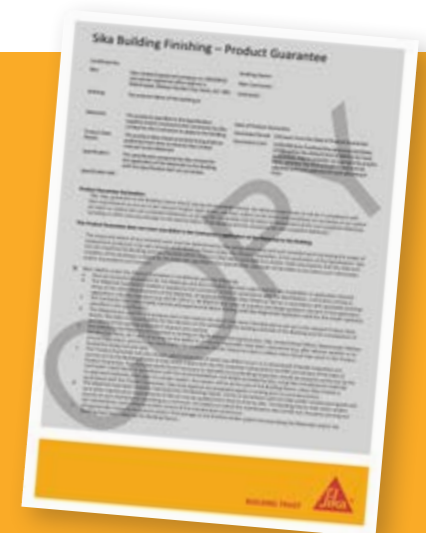


PRODUCT GUARANTEE

Sika provides a 10-year material guarantee as standard on all EWI installations, as required on all new build residential buildings by NHBC, Premier Guarantee, etc.

Sika EWI guarantees are provided where:

- A project specification is issued
- The work is carried out by a Sika Registered Applicator
- A post installation inspection has been successfully completed by Sika.



PRODUCT INFORMATION

SIKA'S EXPERTS CAN ASSIST WITH A RANGE OF TECHNICAL SOLUTIONS



DATASHEETS

Technical and Safety Datasheets are available for all products within the Sika range.

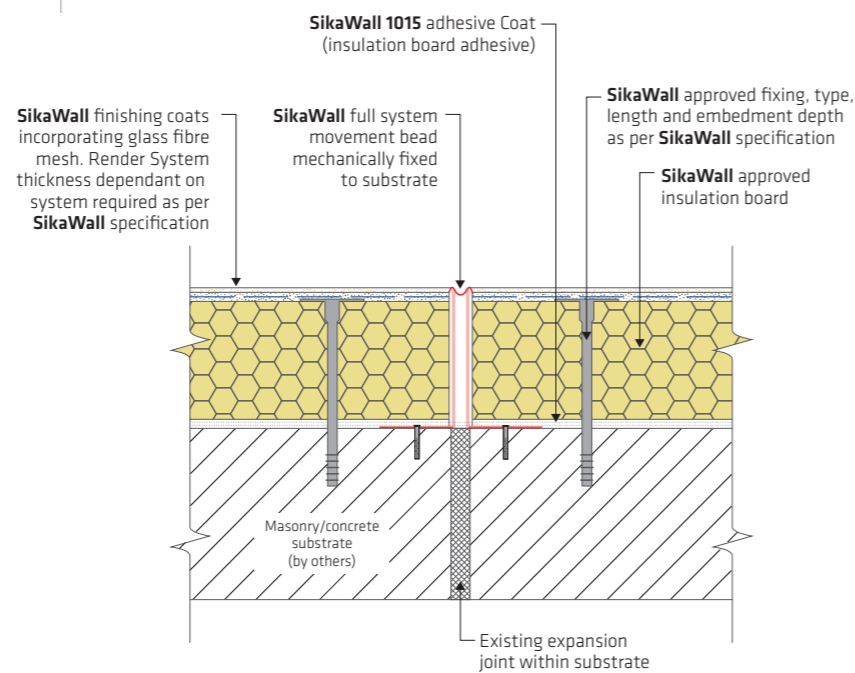
Visit sika.co.uk/buildingfinishing to download or speak to your Specification Manager.



CONSTRUCTION DETAILS

We have a suite of standard construction details covering a wide range of standard and non-standard substrates and systems.

We can also create project specific, bespoke construction details when required, by our inhouse technicians.



OUR EWI SOLUTION

WHETHER SIKATHERM OR PAREXTHERM, WE HAVE THE ANSWER

ADHESIVE AND BASE COAT

A strong foundation is key when installing an EWI system, and SikaWall® 1015 Adhesive Coat from the SikaTherm system provides just that. Containing an optimal amount of polymer, it will perfectly adhere to the chosen insulation board, whether EPS, Phenolic, or Mineral Wool. SikaWall® 1015 Adhesive Coat has also been designed to receive Sika 355 AVU Reinforcing Mesh for added strength.

TOPCOATS

The SikaTherm EWI system can be completed in a range of finishes, colours, and textures, depending on the desired appearance. Revlane, a ready to apply acrylic coating, is the perfect topcoat for any SikaTherm EWI system. Available in a vast range of colours, it can accommodate the individual needs of each project. When a more robust finish is needed in areas of harsh weather conditions, SikaWall 5400 Exposed Aggregate Dry Dash Receiver is the ideal solution.

ANCILLARIES

To provide additional strength to the EWI system, Sika 355 AVU Reinforcing Mesh is used within the base coat layer while still wet. The mesh is particularly useful around challenging areas of a property, such as around window and door frames where cracking can occur.

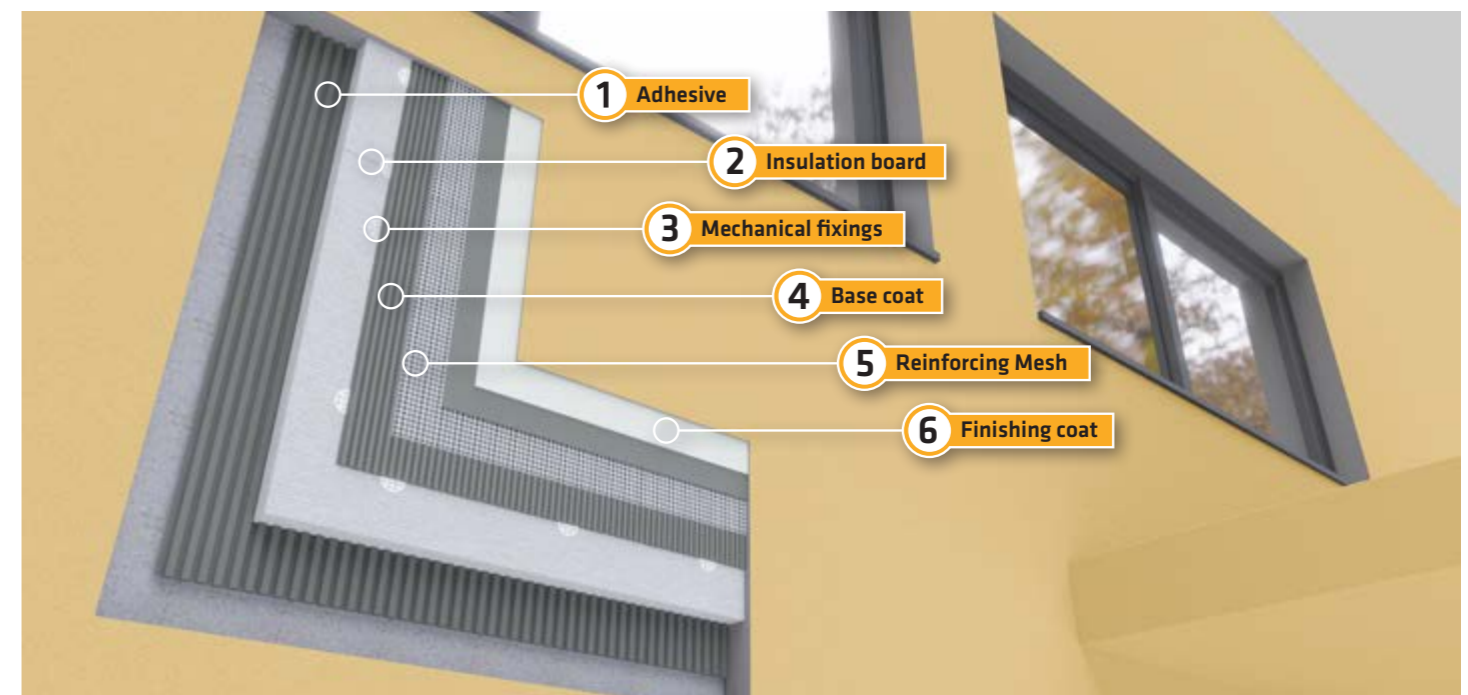


SUBSTRATES

Sika EWI SYSTEMS can be applied to a wide variety of substrates, including:

- Low and Normal Density Aircrete Lightweight Blockwork
- Ultra-lightweight and Lightweight Aggregate Concrete Blockwork
- Dense Aggregate Concrete Blockwork
- Clay Blockwork e.g. Porotherm
- Cast Concrete
- Brick

Plus other substrates including, non-traditional construction types, Wimpey No-Fines, Reema, Airey, BISF, Cornish, etc.



ALSO AVAILABLE WITHIN THE SIKA BUILDING FINISHING RANGE



MINERAL RENDERS



BASE COATS



LIME RENDERS



TOP COATS



POINTING MORTARS



**COMPLEMENTARY
PRODUCTS**



LOOKING FOR MORE?

Visit our dedicated Training Centre in Wishaw, Scotland, for an in depth look into our Building Finishing offer. Our team of industry experts are available to deliver dedicated training courses around EW1, Mineral Renders, and Pointing Mortars, in a blend of classroom based and hand-on learning.

SIKA LIMITED

Watchmead
Welwyn Garden City
Hertfordshire AL7 1BQ
Phone: +44 (0)1707 394 444

Sika Limited is part of the global **Sika Group**, specialising in the manufacture and supply of chemical-based products. In the UK, Sika has manufacturing sites in Welwyn Garden City, Preston, Leeds, Wishaw, and Redditch. Sika has subsidiaries in 103 countries around the world and manufactures in over 400 factories.

Rev. 02
© Sika Ltd 2024

BUILDING TRUST

