

SIKA COLOUR GUIDE



DECORATIVE FAÇADE RENDERS

BUILDING TRUST

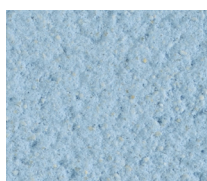


SIKA MINERAL FINISHES

COLOUR GUIDE



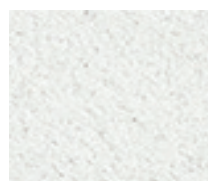
B10 Moonscape



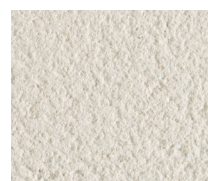
B20 Sky blue



BL10⁽¹⁾ Bright white



LW1 Limestone white*



G00 Natural white*



G10 White light*



G20 Off-white*



G30 Mouse grey*



G40 Smokey grey



G50 Ash grey*



G60 Igneous grey



J20 Pale yellow*



J30 Opal



J39 Athens sand*



J60 Pollen yellow



O10 Sand



O70 Light ochre



R10 Pearly pink



R60 Strong pink



R90 Brick red



T10 Silky grey



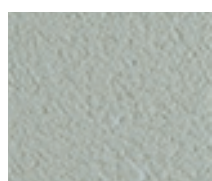
T30 Clay earth



T80 Beige



V10 Stone



V45 Linden green

(1) Represents two products, Blanc du Littoral and Monoblanco

* Manufactured in the U.K. at Wishaw

INFORMATION

Colour reference guides should always be considered as indicative colours only and can vary between different screens or printers. Colour matching to these guides or an existing render is difficult to achieve. It is the customer's responsibility to ensure they are satisfied with any colour matching before approval. For this reason, you should request a sample to allow you to make a final decision on your choice of colour or to check a colour match.

Sika is able to offer other mineral render colours, but we are unable to match a paint reference colour to a mineral finish as the pigmentation process differs between mineral renders and synthetic renders.

Please ensure Sika's general guidelines, conditions, product data sheets, instructions and precautions are taken into consideration when using coloured renders.

REVLANE FINISHES

COLOUR GUIDE



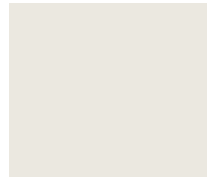
PB10



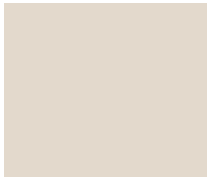
PB20



PB30



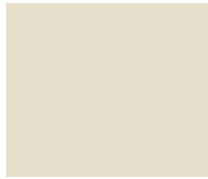
PBL10



PG00



PG10



PG20



PG30



PG40



PG50



PJ39



PJ10



PJ20



PJ30



PJ40



PJ50



PJ60



PJ70



PO10



PO20



PO30



PO40



PO50



PO60



PO70

REVLANE FINISHES

COLOUR GUIDE



P080



P090



PR10



PR20



PR30



PR40



PR50



PR60



PR70



PR80



PR90



PT10



PT20



PT30



PT40



PT50



PT60



PT70



PT80



PT90



PV10



PV20



PV30



PV40

FOR SUPPORT, PLEASE CALL

01707 394444 or email: ukd-business-support@uk.sika.com

GUIDANCE

DARK RENDERS

Due to the vulnerability of dark colours to UV light we are unable to create very dark mineral render colours as the amount of colour pigment in mineral renders must not exceed 5% in the finished product. If this percentage is exceeded, the quality of the finished product may be harmed as the co-efficient of solar absorption would be above 0.7 which may cause cracking of the render finish.

Please also ensure that humidity and temperature conditions are taken into account when strong colours are used.

COLOUR MATCHING OF MINERAL RENDERS

Colour will vary depending on the type of finish selected. Application by machine spraying or creating textured effects, particularly a dash textured finish will generally increase the depth of colour and will provide a range of differing shades, depending on the viewing angle. Variation in colour due to weather, site conditions and method of application should also be expected. Due to the variation in applicator techniques, Sika is not responsible for the appearance or colour correctness of the applied finish. Because mineral finishes are produced from natural products, variations in shade, due to weather, site conditions and method of application should be expected.

SAMPLES

Sika can provide colour samples for planning applications or for design consideration. These are generally available in a scraped finish. Other finishes can be provided to order. Colour samples are for guidance only and it is important that a test panel is produced on site for final approval.

If you have a specific colour you would like to match, contact Sika as we are able to offer special colours from a wider range. Once a special colour sample has been approved there is a minimum order of one pallet of 48 x 25 kg bags.

TEST PANEL / APPLICATION

Prior to commencement on site it is recommended that a test panel is produced for inspection by the client, customer, architect, etc, so that they may satisfy themselves with the finish, texture, colour and appearance of the render.

Note: Always check the materials are from the same batch but if this is not the case make sure the materials are well mixed. The shade of the same colour may differ dependent upon the finishing aspect; e.g. the colour of a **textured** finish adjacent to a **smooth** finish in the same colour may appear to look different when viewed next to each other.

FOR MORE INFORMATION ABOUT Sika® Building Finishing,
VISIT [SIKA.CO.UK/BUILDINGFINISHING](https://www.sika.co.uk/buildingfinishing)



DISTRIBUTION



**SEALING
AND BONDING**



**CONCRETE
AND REPAIR**



WATERPROOFING



ROOFING



FLOORING



**STRUCTURAL
STRENGTHENING**



FACADES

WHERE TO FIND US

SIKA LIMITED

Watchmead
Welwyn Garden City
Hertfordshire AL7 1BQ
Phone +44 (0) 1707 394 444

SIKA WISHAW

201 Netherton Street
Wishaw, North Lanarkshire ML2 0EF
Phone +44 (0) 1698 373305

SIKA LIQUID PLASTICS

Sika House, Miller Street
Preston, Lancashire PR1 1EA
Phone +44 (0) 1772 259781

SIKA LEEDS

Site 41, Knowsthorpe Way
Cross Green Industrial Estate
Leeds LS9 0SW
Phone +44 (0) 113 240 3456

Sika Limited is part of the global Sika Group, specialising in the manufacture and supply of chemical-based products. In the UK, Sika has manufacturing sites in Welwyn Garden City, Preston, Leeds and Wishaw. Sika has subsidiaries in 100 countries around the world and manufactures in over 300 factories.