

PRODUCT DATA SHEET

SikaRoof® Decor Profile PVC

Decor Profile for PVC Roof System

PRODUCT DESCRIPTION

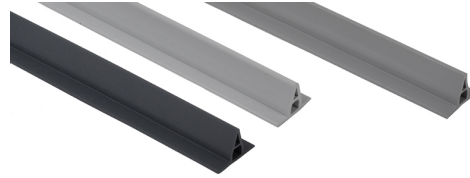
SikaRoof® Decor Profile PVC is a polyvinyl chloride (PVC) extruded profile for welding to PVC sheet waterproofing membranes to replicate standing seam metal roofing systems.

USES

SikaRoof® Decor Profile PVC creates an appearance of a standing seam metal roof

CHARACTERISTICS / ADVANTAGES

- Easily applied
- Suitable for any roof slope
- Hot air weldable



PRODUCT INFORMATION

Chemical Base	Polyvinyl chloride (PVC), profile extruded	
Packaging	Cardboard tube of 25 pieces including connecting plugs.	
Shelf Life	5 years from date of production	
Storage Conditions	The product must be stored in original, unopened and undamaged sealed packaging in dry conditions at temperatures between +5 °C and +30 °C. Always refer to packaging.	
Appearance / Colour	Surface:	smooth
	Colour:	light grey (nearest RAL 7047) lead grey (nearest RAL 7012) Pale green (nearest RAL 6021)
Length	3000 mm (+10 mm / -5 mm)	
Width	35 mm ± 1,3 mm	

SYSTEM INFORMATION

System Structure	The following products/tools must be considered for use depending on roof design: <ul style="list-style-type: none"> ▪ Sikaplan® SGK-types ▪ Sikaplan® G-types
Compatibility	Compatible with Sikaplan® PVC Roof waterproofing membranes

APPLICATION INFORMATION

Ambient Air Temperature	-20 °C min. / +60 °C max.
Substrate Temperature	-30 °C min. / +60 °C max.

VALUE BASE

All technical data stated in this Product Data Sheet are based on laboratory tests. Actual measured data may vary due to circumstances beyond our control.

LIMITATIONS

Installation work must only be carried out by Sika® trained and approved contractors, experienced in this type of application.

- Ensure SikaRoof® Decor Profile PVC is prevented from direct contact with incompatible materials (refer to compatibility section).
- The use of SikaRoof® Decor Profile PVC membrane is limited to geographical locations with average monthly minimum temperatures of -50 °C. Permanent ambient temperature during use is limited to +50 °C.
- The use of some ancillary products such as adhesives, cleaners and solvents is limited to temperatures above +5 °C. Observe temperature limitations in the appropriate Product Data Sheets.
- Special measures may be compulsory for installation below +5 °C ambient temperature due to safety requirements in accordance with national regulations.

ECOLOGY, HEALTH AND SAFETY

Fresh air ventilation must be ensured, when working (welding) in closed rooms.

REGULATION (EC) NO 1907/2006 - REACH

This product is an article as defined in article 3 of regulation (EC) No 1907/2006 (REACH). It contains no substances which are intended to be released from the article under normal or reasonably foreseeable conditions of use. A safety data sheet following article 31 of the same regulation is not needed to bring the product to the market, to transport or to use it. For safe use follow the instructions given in the product data sheet. Based on our current knowledge, this product does not contain SVHC (substances of very high concern) as listed in Annex XIV of the REACH regulation or on the candidate list published by the European Chemicals Agency in concentrations above 0,1 % (w/w).

APPLICATION INSTRUCTIONS

SUBSTRATE PREPARATION

The Roof waterproofing membrane must be clean to achieve proper hot air welding

APPLICATION

Installation procedure
Ensure the SikaRoof® Decor Profile PVC is tacked into position at the desired centres and hot air weld into place to the roof membrane. Join two or more SikaRoof® Decor Profile PVCs together, using the connector plugs supplied. Finish the end of the profile with a piece of hot air welded membrane if required.

LOCAL RESTRICTIONS

Please note that as a result of specific local regulations the performance of this product may vary from country to country. Please consult the local Product Data Sheet for the exact description of the application fields.

LEGAL NOTES

The information, and, in particular, the recommendations relating to the application and end-use of Sika products, are given in good faith based on Sika's current knowledge and experience of the products when properly stored, handled and applied under normal conditions in accordance with Sika's recommendations. In practice, the differences in materials, substrates and actual site conditions are such that no warranty in respect of merchantability or of fitness for a particular purpose, nor any liability arising out of any legal relationship whatsoever, can be inferred either from this information, or from any written recommendations, or from any other advice offered. The user of the product must test the product's suitability for the intended application and purpose. Sika reserves the right to change the properties of its products. The proprietary rights of third parties must be observed. All orders are accepted subject to our current terms of sale and delivery. Users must always refer to the most recent issue of the local Product Data Sheet for the product concerned, copies of which will be supplied on request.

SIKA LIMITED

Watchmead
Welwyn Garden City
Hertfordshire, AL7 1BQ
Tel: 01707 394444
Web: www.sika.co.uk
Twitter: @SikaLimited



Product Data Sheet
SikaRoof® Decor Profile PVC
June 2024, Version 01.02
020945011150000008

SikaRoofDecorProfilePVC-en-GB-(06-2024)-1-2.pdf