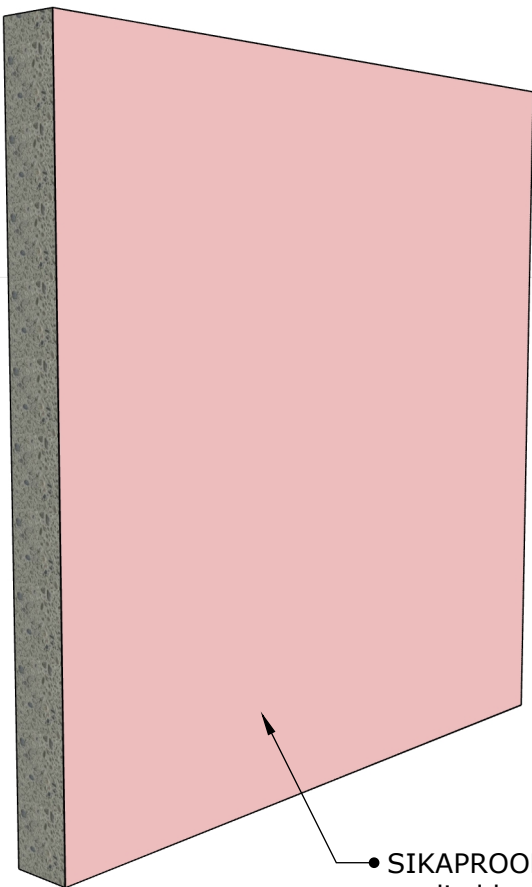


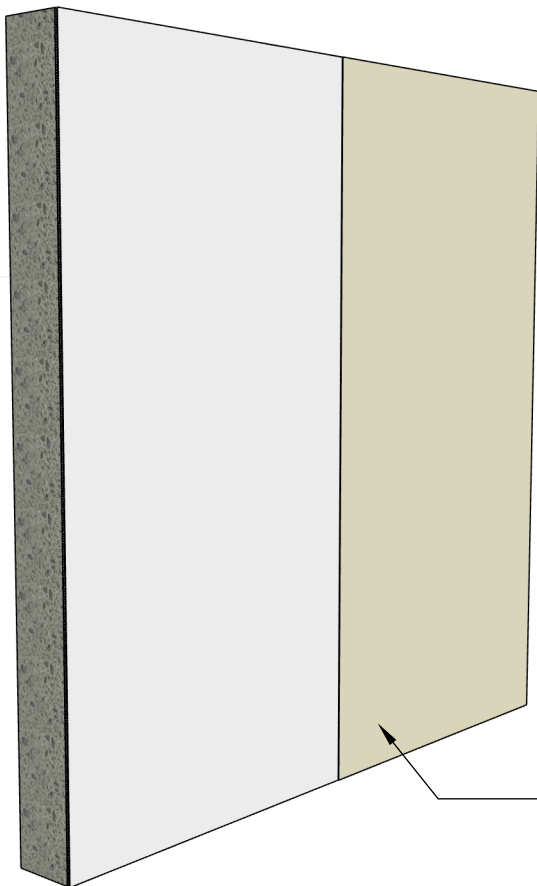
• SIKA WATERTIGHT CONCRETE



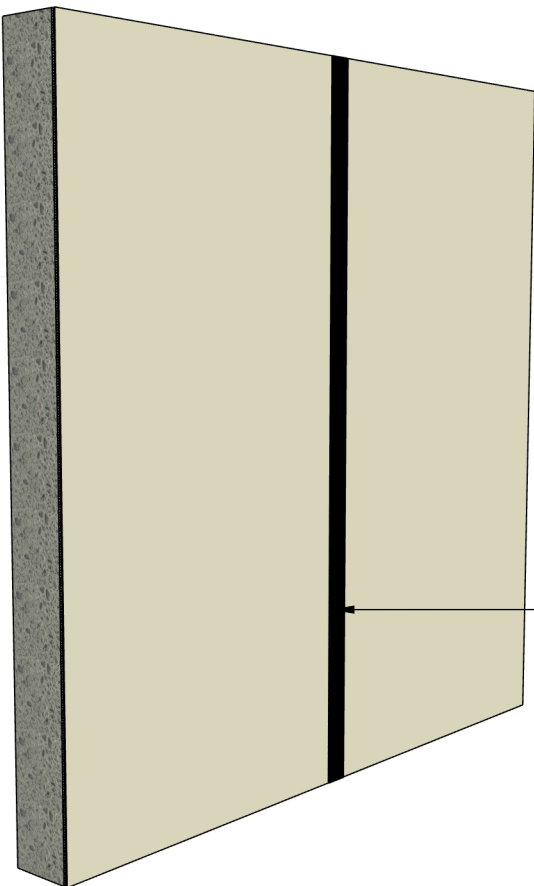
• SIKAPROOF PRIMER 02
applied by brush or roller



• SIKAPROOF ADHESIVE 02
Applied by 4 mm notched
trowel. Adhesive is then
smoothed before applying
SIKAPROOF A+ MEMBRANE



• SIKAPROOF A+ MEMBRANE
placed onto SIKAPROOF
ADHESIVE 02
Smooth over with float



SIKAPROOF EXTAPE -100
over but joint in membranes
to seal lap, when adhesive
has fully hardened
(to accept roller).

Rev.	Description	By	Aprvd By	Date

ALL DETAIL DRAWINGS ARE FOR UK USE ONLY,
DO NOT SCALE FROM DRAWING

THIS DRAWING IS THE CONFIDENTIAL PROPERTY OF
SIKA LIMITED AND MUST NOT BE REPRODUCED
EITHER WHOLLY OR PARTIALLY. ALL RIGHTS IN
RESPECT TO PATENTS, DESIGN, AND COPYRIGHTS
ARE RESERVED. SIKA LTD.
WWW.SIKA.COM



SIKA LIMITED
Watchmead
Welwyn Garden City
Hertfordshire, AL7 1BQ
Tel: +44 (0) 1707 394 444
Web: <https://gbr.sika.com>
Email: waterproofing.technical@uk.sika.com

Drawn By	Checked By	Aprvd By	Date
			17,07,24

Description	SIKAPROOF A+ POST APPLIED SEQUENCE		
-------------	---------------------------------------	--	--

Drawing No.	Issue	Sheet
SP+W28	A	1