

SIKA AT WORK

ST GILES MSCP, NORWICH

REFURBISHMENT: Sikafloor® RB28 System, Sikafloor® RB58 System, Sika® MonoTop®-610, Sika® MonoTop®-615, Sikagard®-670W and Sika® Ferrogard®-903+

BUILDING TRUST

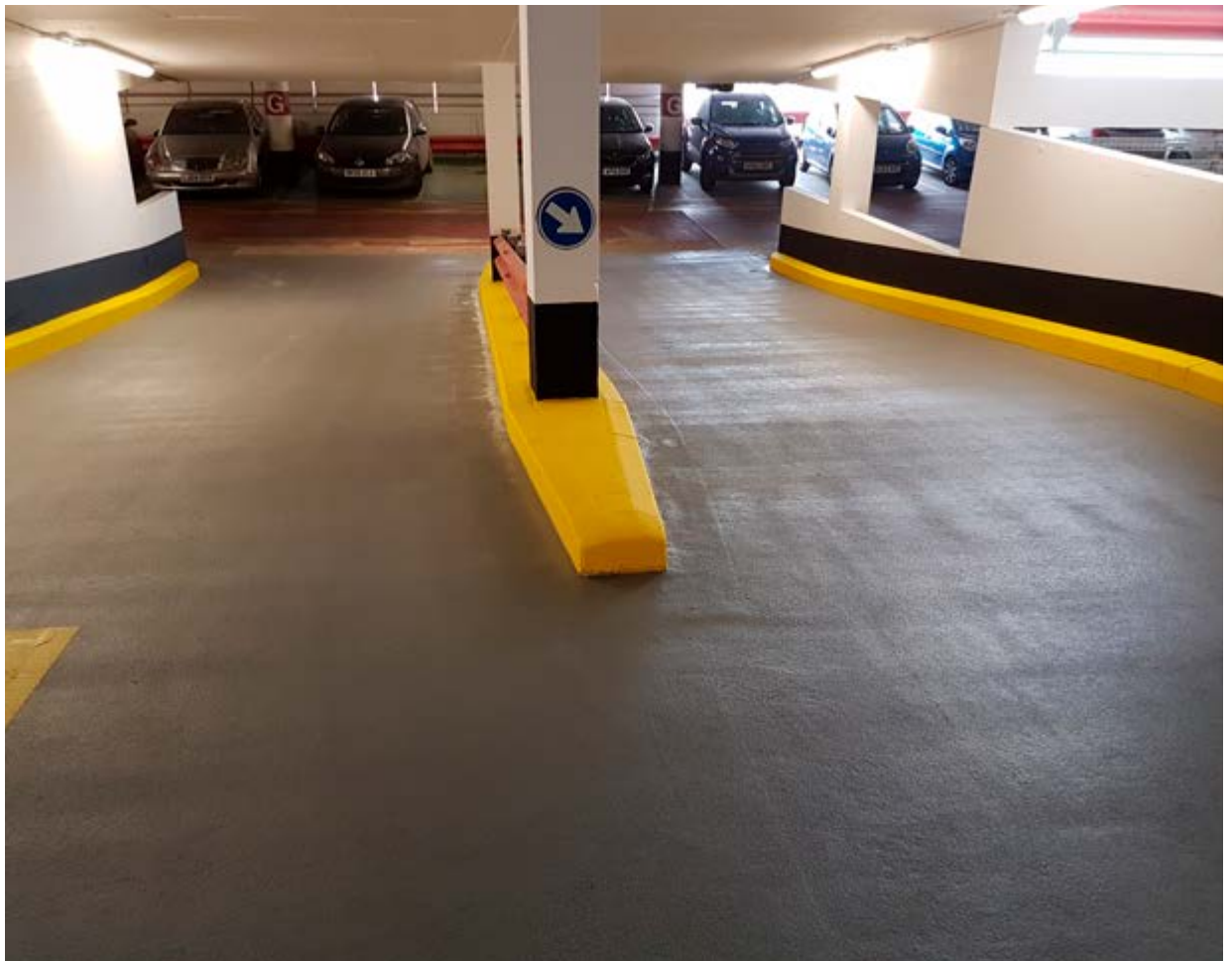


ST GILES MSCP NORWICH



Sika supplied the rapid, high-quality waterproof and corrosion management solution to ensure the multi-deck refurbishment of a city centre car park was completed with minimal disruption to shoppers and nearby traders.

The 10-storey St Giles MSCP in Norwich had begun to show signs of wear-and-tear with its concrete soffits, walls and car park decks becoming cracked and spalled in places. The site's owners, Norwich City Council, required a proven waterproof decksystem that was not only rapid and easy-to-apply to lessen the refurbishment's impact on shoppers; it had to look as good as it performed in terms of safety and durability.



ST GILES MSCP NORWICH



Renowned for its superb performance, [Sikafloor®-RB28](#) provided the slip and abrasion-proof solution for the car park's exposed top two decks. Fast-curing and easy to apply, the system comes with a 10-year warranty and comprises several layers to guarantee a robust, watertight, performance. For areas of potential movement, [Sikafloor®-RB58](#) system was applied. [Sikafloor®-RB58](#) has been tested in accordance with BS EN 1062-7 for dynamic crack bridging class B 4.2; a test carried out at a temperature of -20°C, a harsher environment than even the UK winter normally provides.

For the intermediate decks, [Sikafloor®-EB24](#) was applied. Offering exceptional resistance to water and chlorides, a stunning finish and a hassle-free application, the system ensured a high performance, long-term waterproof solution for the client. Exposed repair areas on soffits and parapet walls were repaired with the [Sika® MonoTop®](#) concrete repair system and the a [Sikagard® anti-carbonation](#) coating. Firstly with [Sika® MonoTop®-610](#), a high-performance, one-component, cementitious, polymer-modified primer.

[Sika® MonoTop®-610](#) simply required mixing with water to provide a superb, reinforcement corrosion protection and bonding primer in preparation for concrete repairs using [Sika® MonoTop®-615](#). This concrete repair mortar – which also requires nothing more than simple water mixture for preparation – is the perfect reinforcement mortar for delaminated, weak, damaged and deteriorated concrete.

As an extra protective layer, [Sikagard®-670W](#) was applied to all deck soffit's throughout the car park. The anti-carbonation paint prevents moisture ingress whilst remaining water vapour permeable, providing concrete substrates with superb, one-coat protection against the effects of ageing and weathering. [Sika® Ferrogard®-903+](#), designed to extend the service life of any reinforced concrete structure without the need for concrete removal, was also applied as part of Sika's total corrosion management system (TCM) approach.

The refurbishment, which began in January 2017, was carried out in a 'live' environment as part of a phased works programme to minimise disruption. This entailed Sika's specialist contractor initiating a traffic management system to ensure work could continue in safety without inconvenience to the public.

A spokesman for Sika's specialist contractor, which also installed new expansion joints throughout the car park, said: "The rapid-apply qualities of Sika's concrete waterproof system was crucial to its specification for this project. The refurbished external decks cured overnight, meaning we were able to paint them the following day. "Ultimately, this job needed to be completed to the highest-possible standard without detriment to shoppers or impacting on nearby businesses. Sika's solution, as ever, ticked all the boxes. We've provided the client with a safe, smart car park which will remain protected against time and the elements for many years to come."

Following the application of parking bay and pedestrian markings, the car park's refurbishment was completed in August 2017 – to the client's agreed timeframe and complete satisfaction. The once tired-looking and damaged car park surface has been replaced by bright, durable flooring, which is not only safeguarded against the perils associated with damp and water ingress, it has created a brighter, more welcoming environment for visiting shoppers – much to the delight, no doubt, of nearby retailers.

For further information call 0800 112 3863