



SIKA AT WORK

HEXAGONAL ROOF REFURBISHMENT SHOWCASES EXCELLENCE IN **SINGLE PLY ROOFING CRAFTSMANSHIP**

ROOFING: Single Ply Waterproofing Membrane Sikaplan® G-15 in pale green, Sarnavap® 1000E, Sikatherm® MWDD insulation

BUILDING TRUST



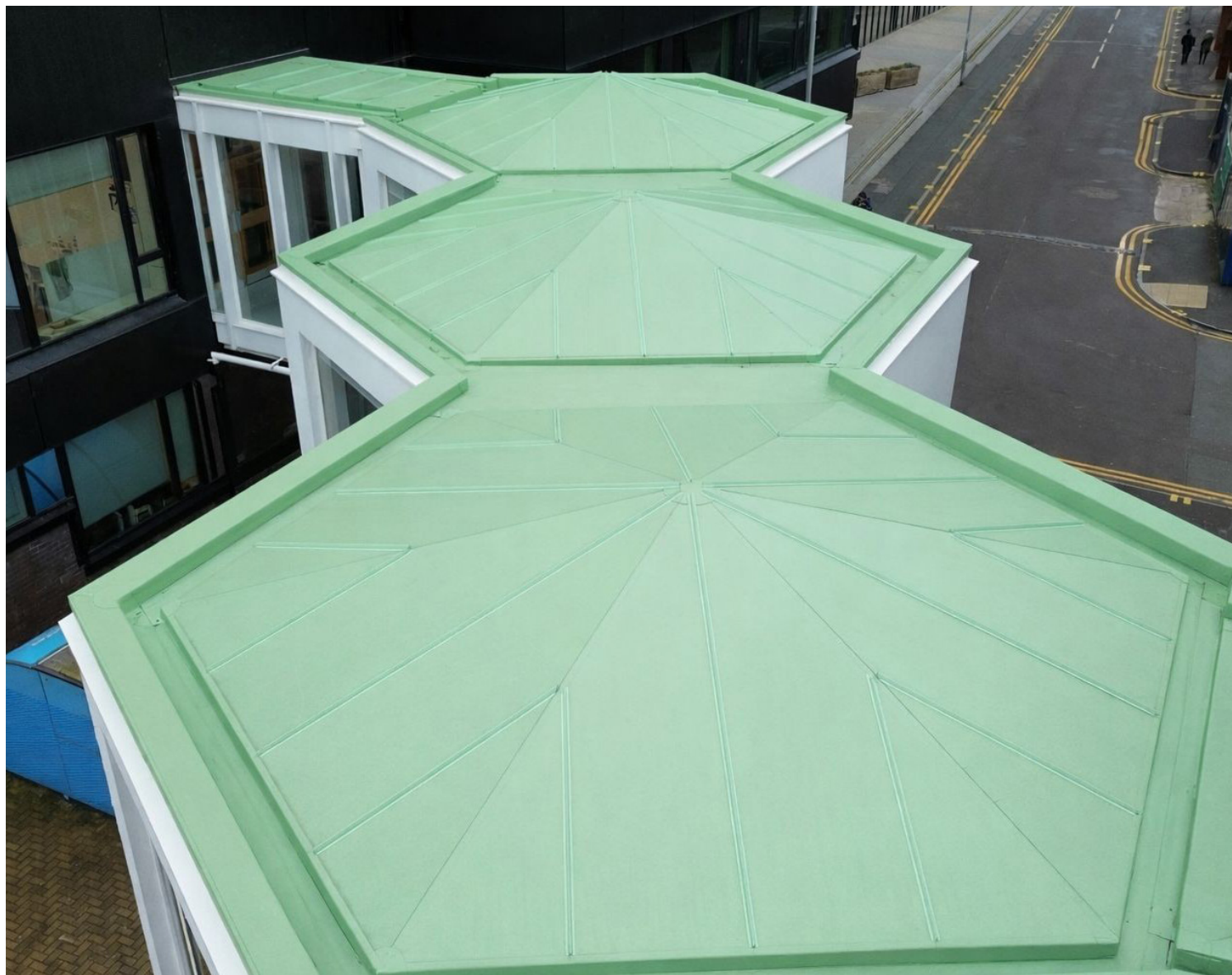
CHATHAM LINK BRIDGE, MANCHESTER METROPOLITAN UNIVERSITY



THE MANCHESTER METROPOLITAN UNIVERSITY (MMU) PROJECT INVOLVES A 70M² ROOFING INSTALLATION ON THE CHATHAM LINK BRIDGE, WHICH CONNECTS THE CHATHAM BUILDING TO THE HISTORIC GROSVENOR BUILDING AT MANCHESTER METROPOLITAN UNIVERSITY'S SCHOOL OF ART. LOCATED IN THE HEART OF THE CAMPUS, THE BRIDGE SERVES NOT ONLY AS A PHYSICAL LINK BETWEEN TWO SIGNIFICANT BUILDINGS BUT ALSO AS A CREATIVE SPACE, FUNCTIONING AS AN ART GALLERY CURATED BY STUDENTS.

The works formed part of a refurbishment project, replacing an existing copper-faced felt roofing system that had reached the end of its service life. The refurbishment was necessary to improve weatherproofing performance, ensure long-term durability, and maintain the visual coherence of the structure. A key design consideration was to match the original green roof aesthetic, ensuring continuity with the bridge's established appearance and its historic and contemporary surroundings.

The main contractor was Greenmount Projects, working with Crescent Roofing, who installed the roofing system using products manufactured by Sika, and architectural design was by Cassidy and Ashton Group. The final build-up included Sarnavap® 1000E, Sikatherm® MWDD (60mm insulation), and a Sikaplan® G-15 membrane in pale green, carefully selected to replicate the original copper-faced finish while delivering modern performance standards.



A single ply roofing system was selected for this project due to its ability to meet both the aesthetic and performance requirements set out in the specification, while also addressing the practical challenges of the site.

A key consideration in the selection process was ensuring full alignment with the requirements of the conservation and heritage management team. The Sika green patina single ply membrane was chosen specifically because it replicates the appearance of an oxidised copper roof. This ensured the refurbished bridge maintained visual continuity with its historic surroundings, without the need for a traditional metal roofing solution.

In comparison to the originally proposed metal roof, the single ply system offered several practical and economic advantages. It provided a lower overall cost solution, making it more viable within the project budget. The material is also significantly lighter than metal, reducing the structural load on the bridge - an important consideration for a link structure between existing buildings.

From an installation perspective, the system allowed for a faster and more efficient programme. Its flame-free application improved on-site safety, particularly important in a sensitive university environment with students around the area. The heat-welded seams deliver a high level of waterproofing integrity, ensuring long-term performance and durability.

Additionally, the flexible nature of the single ply membrane made it particularly well-suited to the complex hexagonal geometry of the roof. This

adaptability allowed for a more precise and reliable installation compared to more rigid alternatives such as metal roofing.

A key feature of the project is the perimeter detailing. The cladding division of Crescent Roofing designed and installed bespoke perimeter flashings to accommodate the intricate hexagonal geometry of the roof. These flashings were carefully formed to integrate beneath the new Sika trim, achieving a clean and precise finish. This detailing not only enhances the visual quality of the roof but also provides critical protection to the existing concrete perimeter, which had previously been prone to water ingress. The solution therefore combines both aesthetic refinement and functional improvement.

This project as a whole demonstrates excellence in overcoming complexity. The unique hexagonal roof design, combined with varying dimensions and raised profiles, required a high level of technical expertise and workmanship. The successful execution of symmetrical membrane layouts, precise standing seam alignment, and integrated drainage solutions highlights the installers' skill and attention to detail.

PROJECT PARTICIPANTS

Size: 70m²

Client: Manchester Metropolitan University

Architect: Cassidy and Ashton Group

Main Contractor: Greenmount Projects

Roofing Contractor: Crescent Roofing



Our most current General Sales Conditions shall apply.
Please consult the Data Sheet prior to any use and processing.



SIKA LIMITED

Head Office
Watchmead
Welwyn Garden City
Hertfordshire, AL7 1BQ
United Kingdom

Contact

Phone +44 1707 394444
E-Mail enquiries@uk.sika.com
www.sika.co.uk

BUILDING TRUST

