

LIQUID APPLIED SOLUTIONS FOR ROOFS AND WALKWAYS Sikalastic® Range



AN INTRODUCTION TO SIKA LIQUID PLASTICS



“A COLD APPLIED LIQUID SOLUTION FOR EVERY JOB,
NO MATTER THE BUDGET OR COMPLEXITY”

Quality and innovation are just two of the characteristics replicated throughout Sika – visible in our products, manufacturing processes, and research & development.

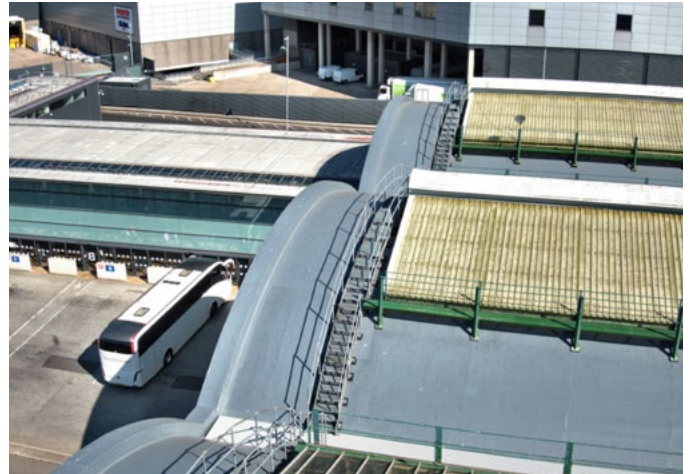
Since 1963 we have produced an extensive range of high performance, technologically advanced coatings and membranes for the protection and waterproofing of roofs and balconies. Sika has a complete range of

cold applied built-up roofing systems, including warm roofs, inverted roofs, and green roof finishes.

As a member of the Sika worldwide group, the demand for our products stretches across the globe, and many successful projects have been completed globally.



POLYURETHANE WATERPROOFING SYSTEMS FOR FLAT ROOFS



Sika has been manufacturing high performance protection and waterproofing systems for over 50 years. The Sika Liquid Plastics range of coatings are a single component, cold applied, moisture-triggered, liquid waterproofing membrane, that cures to form a seamless, durable and weather resistant waterproofing solution for exposed roof areas. The range has all the inherent advantages of using liquid membranes, as well as offering the benefit of being a cost effective alternative to other options available in the market.

Sikalastic®-625N SOLUTIONS

Sikalastic®-625N incorporates technology that allows the material to use atmospheric moisture to trigger the curing process. This means that the waterproofing membrane is capable of curing in a wide range of conditions, making it ideal for use in the unpredictable UK climate. Unlike traditional polyurethane systems, it does not release CO₂, which can cause gassing, and application is not delayed by adverse weather, which means roofing works are not slowed down.

SYSTEM FEATURES:

- **Cold Applied** - cold applied application
- **Seamless** - eliminating the possibility of joint failure through poor workmanship
- **Quick and Easy Application** - using glass fibre matting to allow simple application in detail areas
- **Cost Effective** - especially on complex roofs
- **High Elasticity** - allowing for greater thermal movement
- **Guarantees** - 10, 15 and 20 year guarantees available
- **BBA Accreditation** (Certificate No: 16/5294) **and ETA Accreditation** (and is therefore CE marked)
- **i-cure patented technology Exclusive to Sika** - Improved cure performance at high temperature and high humidity conditions and workability



SIKALASTIC®
PU✓

Sikalastic®-625N



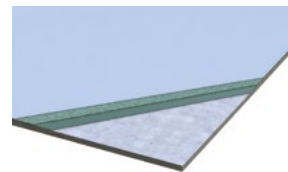
EASY APPLICATION USING GLASS FIBRE MATTING

The membrane is applied in two coats: an embedment coat, which is reinforced with Sika Reemat Premium (chopped strand glass fibre mat), and once this is cured, a top coat is added to complete the system.

The small amounts of solvent present within the polyurethane product 'breaks down' the emulsion binder in the matting, enabling it to become easily moulded around detail areas, allowing quick application, particularly on complex roofs.

The glass fibre mat provides the membrane with exceptional tensile strength to withstand thermal movement in the substrate.

Sikalastic®-625N WATERPROOF COATING

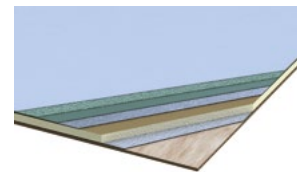


Cures to form a seamless, durable and weather-resistant waterproofing solution for exposed roof areas.

System build up:

- Sikalastic®-625N
 - Sika Reemat Premium Embedded
 - Sikalastic®-625N Embedment Coat
 - Substrate*
- *Prime as required

Sikalastic®-625N WATERPROOF COATING FOR WARM ROOFS



Cures to form a seamless, durable and weather-resistant waterproofing solution for warm roof areas.

System build up:

- Carrier Membrane
 - Primer
 - Sikatherm insulation
 - Sika Insulation adhesive
 - Air and Vapour Control Layer
 - Substrate*
- *Prime as required



SIKALASTIC®
PU✓

WATERPROOFING FOR METAL ROOFS AND GUTTERS



Metal sheeting has remained popular across many sectors, including industrial, retail, and leisure. The main driving factor is often the ease and speed at which the framework structure of the building can be erected, and the envelope encapsulated.

In the context of metal sheeting, used as a pitched roofing material, large profiled roof sheets are often an attractive proposition, because of a good coverage rate per sheet, and their ability to discharge water effectively over a large area. However, exposure factors, such as geographical location, combined with the type of sheet, and its coating, will greatly influence the lifespan of metal roofs. At some point, most metal roofs will require maintenance and attention, to address possible degradation of the protective coating, and in some cases, corrosion of the metal sheet core, which, if left untreated could undermine the primary waterproofing function.

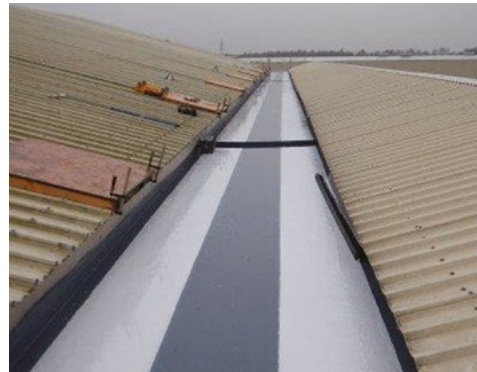
As a market leader in liquid applied roof membranes, Sika has a strong and proven background in providing high performance waterproofing coatings for metal roofs, across the country – successfully extending service life, backed by guarantee.

The Sika Liquid Plastics range, includes a number of metal roof systems incorporating Sikalastic®-625N.

SYSTEM FEATURES:

- **Lightweight Coating** – there is no requirement to overclad the roof, which means disruption to the building below is minimised and costs are kept low
- **Seamless** – the opportunity for windblown rain to penetrate the seams of the cladding is eliminated and the building is kept watertight
- **Extremely Flexible** – the locally reinforced coating can cope with normal thermal movement within the roof, without splitting

GUTTERS



- **Easy Application** - systems can be spray or brush applied
- All systems have passed stringent fire tests
- **Guarantees** - 10 and 15 year guarantees available
- **BBA Accreditation** (Certificate No: 16/5294) **and ETA Accreditation** (and is therefore CE marked)

Sika has a range of metal roof systems, to provide a solution for every project requirement, and every budget, within the Sika® Pro-Tecta range.



SIKALASTIC®
PU✓

Sika® Pro-Tecta CE CUT EDGE CORROSION SOLUTIONS



Corroded roof sheet

Cut edge corrosion is a common issue, found in aged and weathered metal roof sheets, with its roots in the way they are cut at the point of manufacture.

Coated metal roof sheets are often manufactured as larger units, and cut to size as required. As a result, the cut often leaves the leading edge of the sheet uncoated and exposed.

The action of natural weathering, over time, can start to corrode the exposed edge of the sheet, causing the protective coatings to peel away, revealing the bare metal core to further corrosion.

If left untreated, this process will continue and potentially threaten their primary waterproofing function.

Sika® Pro-Tecta CE has been developed and tested as an effective surface treatment for the onset of cut edge corrosion, designed to extend service-life, where the sheets remain structurally sound, and the primary waterproofing function has not been compromised.



Corroded roof sheet

The Sika® Pro-Tecta CE system consists of:

■ **Sika® Poxicolor HE New**

A state of the art primer, specifically developed by Sika to be applied in a single coat, to manually prepared surfaces, to St2 or St3, in accordance with ISO 8501

■ **SikaCor® EG-5**

A high performance, acrylic polyurethane, which is applied in two coats, creating a hardwearing system that has unrestricted usage across the UK mainland, achieving high levels of corrosion and backed by a 10 year material guarantee

Full maintenance coating systems:

Sika also offers a range of non-waterproofing, full maintenance coatings for metal roof systems, available in a variety of different colours. Contact your local Area Technical Manager or Sika Technical Customer Services for more information.

SIKA® PRO-TECTA
CE

Sika® Pro-Tecta CE CUT EDGE CORROSION SOLUTIONS



Sika® Pro-Tecta CE



Sika® Pro-Tecta CE

SYSTEM FEATURES:

Sika® Poxicolor HE New: Primer

- Can be installed on manually prepared surfaces to St2 or St3
- Fast drying and high-build
- Excellent coverage rates

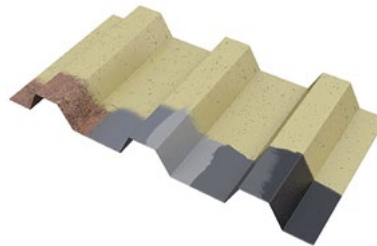
SikaCor® EG-5: Coating

- Very good corrosion protection properties
- Excellent chemical, weather and colour stability
- Tough and elastic
- Resistant to shock and impact
- Available in a range of colours

System

- Unrestricted use across the UK mainland, including coastal areas*
- High levels of corrosion protection
- Can be installed on a range of metal sheet types - including coated and uncoated

*check with your local Area Technical Manager



SYSTEM BUILD UP:

- SikaCor® EG-5 (two coats)
- Sika® Poxicolor HE New
- Prepared metal roof sheet
- Corroded roof sheet

SIKA® PRO-TECTA
CE

Sika® Pro-Tecta WP WATERPROOFING SOLUTIONS



Sika® Joint Tape SA

Whilst remedial treatments such as Sika® Pro-Tecta CE will be a good choice for early maintenance, it is very often the case that metal roof systems require a more extensive refurbishment solution, particularly where sheets are damaged or leaking.

Sika Liquid Plastics has extensive experience in the full waterproofing of metal roof systems, using our high performance liquid membranes.

The specification of our liquid systems, as a full waterproofing solution, offers many benefits, including, cost, speed of application, and minimal disruption to building operations - backed by a full waterproofing guarantee.

Sika® Pro-Tecta WP is our new and enhanced waterproofing system, which has been engineered around our two flagship polyurethane membranes: Sikalastic®-625 and Decothane® Ultra as a low odour option.



Sika® Joint Tape SA

Key to the enhancement of our waterproofing system is the incorporation of a new and innovative self-adhesive tape called Sika® Joint Tape SA. The tape is used as a single-solution for the reinforcement of side-laps, end-laps, and bolt-heads, prior to the application of our liquid coatings, without the need for additional specialist reinforcement coatings.

Reinforcement of laps and bolt-heads is often one of the most time-consuming elements associated with the installation of liquid waterproofing systems on metal roofs. Thanks to the introduction of Sika® Joint Tape SA, installation time is dramatically reduced, allowing Sika Liquid Plastics to greatly simplify the system.

ADDITIONAL SOLUTIONS FOR METAL ROOFS

Safety:

Full protection systems



Accessories:

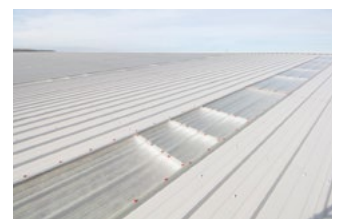
Fixings: Fixing specification and replacement service



SIKA® PRO-TECTA
WP



In-plane roof lights

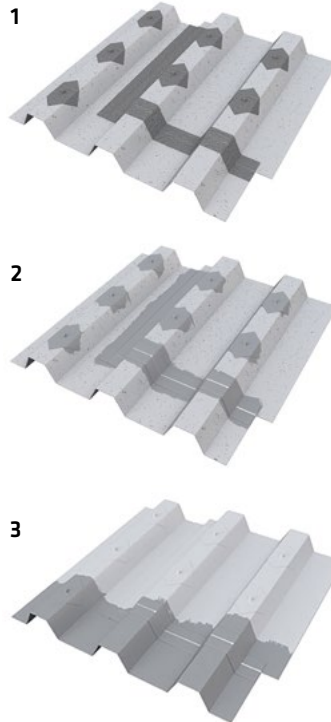


Sika® Pro-Tecta WP WATERPROOFING SOLUTIONS



SYSTEM FEATURES:

- Very few components
- Engineered around our market-leading polyurethane membranes
- Simple, single-solution for reinforcement of laps and bolt-heads
- Single coating solution for the whole roof
- Low odour option with Decothane® Ultra
- Full technical and specification support, including on-site inspections and sign-off
- 10 year and 15 year guarantees available
- BBA accredited



SYSTEM BUILD UP:

- Sikalastic®-625N or Decothane® Ultra (two coats)
- Light application of coating to Sika® Joint Tape SA
- Sika® Joint Tape SA (side laps, end laps and bolt heads)
- Existing substrate*
*Prime as required

SIKA® PRO-TECTA
WP

WATERPROOFING FOR ASBESTOS AND FIBRE CEMENT SHEETS



Asbestos was historically used in many types of building products until its use was withdrawn on 24th November 1999. Despite this, there are still an estimated 1.5 million non-domestic properties containing asbestos. Asbestosis contributes to around 3,000 deaths per year – this is set to rise to 10,000 deaths per year by 2030.

There is a clear need to implement safety measures when encountering asbestos in buildings, in order to prevent the release of harmful fibres into the air. Possibly the safest and most cost effective method is coating asbestos. This involves relatively little disturbance of the material, therefore minimising the risk.

There are a number of benefits to coating asbestos rather than attempting to remove it. It eliminates the need to dispose of the removed asbestos, a process which can be costly, and is subject to strict controls; and it can be completed quickly, thus reducing disruption, on-site time, and all of the associated costs.



At Sika Liquid Plastics, we have developed a specialist asbestos coating system, which incorporates Sikalastic®-625N. Once installed, the system enables the asbestos to be left undisturbed, and will provide protection from all of the associated dangers. Our asbestos system is suitable for external application, and provides a seamless, elastomeric membrane, which resists cracking and flaking.

SYSTEM FEATURES:

- **Lightweight Coating** – there is no requirement to overclad the roof, which means disruption to the building below is minimised and costs are kept low
- **No Fixing Required**
- **Cost Effective** alternative to stripping
- **Easy Application** - systems can be spray or brush applied
- All systems have passed stringent fire tests
- **Guarantees** - 10 and 15 year guarantees available
- **BBA Accreditation** (Certificate No: 16/5294) **and ETA Accreditation** (and is therefore CE marked)



SIKALASTIC®
PU✓

TRAFFICABLE SYSTEMS FOR WALKWAYS, BALCONIES AND TERRACES



Most areas that receive frequent foot traffic are constructed from concrete with an asphalt waterproofing membrane, and without any protection, these substrates will inevitably crack and erode.

We have developed a range of systems specifically designed to protect trafficable surfaces and walkways against the challenges presented by the elements. The systems incorporate our unique waterproofing membrane Sikalastic®-625N – a high performance waterproofing system that utilises a moisture-triggered curing system.

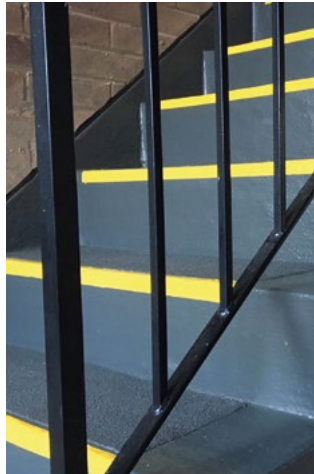
Our trafficable systems can be installed over most existing surfaces, eliminating the costs and inconvenience associated with breaking out and disposing of the old material. Depending upon your design demands, a range of functional top-coat options are available.

SYSTEM FEATURES:

- **Flexible and Crack-Bridging**
- **Elastomeric** – allowing for greater thermal movement
- **Heavy-Duty** – wearing layer option for foot traffic
- **Cold Applied** – eliminating the risk of fire on an occupied building during installation
- **Seamless** – eliminating the possibility of joint failure through poor workmanship
- **Guarantees** – up to 20 year guarantee available
- **CE marked** – tested in accordance with ETAG 005 (ETA cert no 13/0982)

SIKALASTIC®
PU✓

RAPID TRAFFICABLE SYSTEMS FOR WALKWAYS, BALCONIES AND TERRACES



The Sikalastic® Rapid range has been developed to be used in situations where the contractor's access to the area may be restricted, and a fast application is desirable. A typical scenario may be a communal walkway or stairwell within a housing block, frequently seen in urban areas, where residents require access to their home within an acceptable time period.

The Sikalastic® Rapid range is based on PMMA (polymethyl methacrylate) technology, which offers the fastest cure of any liquid applied membrane in the market, even in lower temperatures. The product has the ability to cure in 30-40 minutes and can be accelerated if required.

The systems are compatible with almost all substrates, are exceptionally hard wearing, and are proven to withstand the demands of the walkway, balcony and terrace environment, giving reliable waterproofing and protection, in combination with functional surfacing.

Decorative options are available with the use of Sikalastic® Rapid Clear Sealer and coloured quartz.

WATERPROOFING OF STAIRS AND STAIRWELLS

Sikalastic® Rapid Structured Coating RA is available for areas requiring a more heavy duty finish, such as stairwells and access ramps. When used with a proprietary edge nosing, it provides a long term protective wearing solution.

SIKALASTIC®
RAPID

SIMPLE WET-ON-WET APPLICATION

This means that the polyester reinforcing fleece is first saturated with Sikalastic® Rapid-721 resin, bonding the membrane to the substrate, with the surface layer then applied onto the bonding coat whilst still wet, so forming a single seamless membrane of uniform thickness. The advantage of this type of application is that on smaller roofs, balconies and terraces, a one day application may be possible, because there is no need to wait for drying between coats.

The polyester reinforcing fleece provides the membrane with exceptional tensile strength to withstand thermal movement in the substrate.

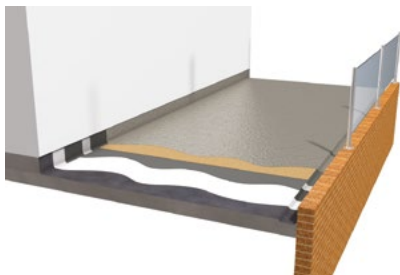
SYSTEM FEATURES:

- **Rapid Curing** - allowing areas to be treated quickly, minimising time on site
- **Access Restrictions Minimised** - materials achieve full mechanical properties exceptionally quickly, and can be trafficked shortly after installation
- **Can Be Applied At Very Low Temperatures** - with an ability to still achieve a rapid cure
- **Flexible and Crack-Bridging** - even at extreme sub-zero temperatures
- **Heavy-Duty** - wearing layer option for foot traffic
- **Cold Applied** - eliminating the risk of fire on an occupied building during installation
- **Seamless** - eliminating the possibility of joint failure through poor workmanship
- **Guarantees** - up to 20 year guarantee available

Sikalastic® Rapid Range



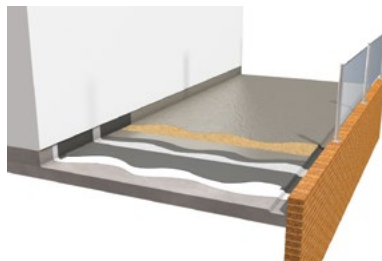
Sikalastic® Rapid TRAFFICABLE (WEARING)



System build up:

- Sikalastic® Rapid Pigmented Sealer
- Sikalastic® Rapid Aggregate
- Sikalastic® Rapid Levelling Mortar (detail areas)
- Sikalastic® Rapid-721 Thixo and Sikalastic® Rapid Fleece 110
- Substrate*
- *Prime as required

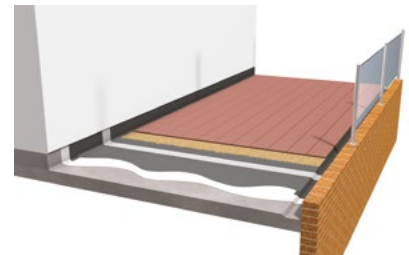
Sikalastic® Rapid TRAFFICABLE (WATERPROOFING & WEARING)



System build up:

- Sikalastic® Rapid Pigmented Sealer
- Sikalastic® Rapid Aggregate
- Sikalastic® Rapid Levelling Mortar
- Sikalastic® Rapid-721 and Sikalastic® Rapid Fleece 110 (detail areas)
- Sikalastic® Rapid-721 Thixo and Sikalastic® Rapid Fleece 110
- Substrate*
- *Prime as required

Sikalastic® Rapid TRAFFICABLE (WATERPROOFING & BURIED)



System build up:

- Tiles
- Sikalastic® Rapid Aggregate
- Sikalastic® Rapid-721
- Sikalastic® Rapid-721 and Sikalastic® Rapid Fleece 110 (detail areas)
- Sikalastic® Rapid-721 Thixo and Sikalastic® Rapid Fleece 110
- Substrate*
- *Prime as required



Sikalastic® Rapid WATERPROOFING FOR FLAT ROOFS AND GUTTERS



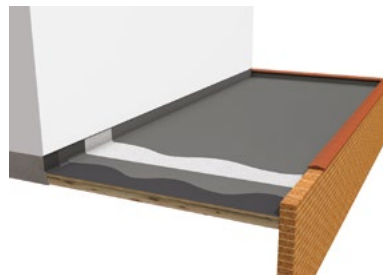
Sikalastic® Rapid-721 is a polymethyl methacrylate (PMMA), liquid applied roof waterproofing membrane, for use on flat roofs with limited access and gutters, where speed of application is a major advantage. The two component, solvent free, cold applied, liquid resin, cures following an extremely rapid in-situ polymerisation, which is activated by the addition of a peroxide catalyst. This curing proceeds rapidly even at temperatures around 0°C.

The membrane is reinforced with a polyester fleece and is installed wet-on-wet. This means that the polyester reinforcing fleece is first saturated with Sikalastic® Rapid-721 resin, bonding the membrane to the substrate, with the surface layer then applied onto the bonding coat whilst still wet, so forming a single seamless membrane of uniform thickness. The advantage of this type of application is that on smaller roofs a one day application may be possible, because there is no need to wait for drying between coats.

SYSTEM FEATURES:

- **Rapid Curing** – allowing areas to be treated quickly, minimising time on site
- **Wet on Wet Application** – membrane and reinforcement applied in one operation, minimising time on site
- **Access Restrictions Minimised** - the materials achieve full mechanical properties exceptionally quickly
- **Cold Applied** – eliminating the risk of fire on an occupied building during installation
- **Seamless** – eliminating the possibility of joint failure through poor workmanship
- **Can Be Applied At Very Low Temperatures** – with an ability to still achieve a rapid cure
- **Flexible** – even at extreme sub-zero temperatures
- **Guarantee** – up to 20 year guarantee available

Sikalastic® Rapid ROOF WATERPROOFING SYSTEM



System build up:

- Sikalastic® Rapid-721 and Sikalastic® Rapid Fleece 110 (details areas)
 - Sikalastic® Rapid-721 Thixo and Sikalastic® Rapid Fleece 110
 - Substrate*
- *Prime as required

SIKALASTIC®
RAPID

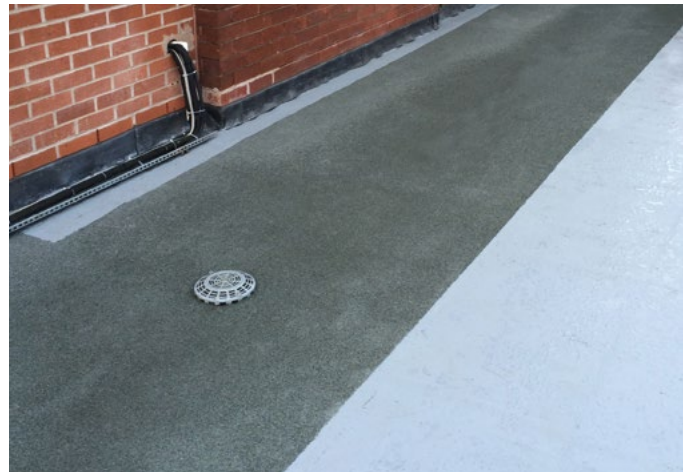
Sikalastic® STP PRODUCT RANGE



Our pioneering research and development has ensured continual advancements in technology and production of the Sikalastic® STP range, a liquid applied waterproofing membrane for use on flat roofs that has been developed using a new innovative Silane Terminated Polymer (STP) technology. This technology was developed in the sealant market and combines the durability characteristics similar to that of a polyurethane, with the weather resistance of silicones.

Sikalastic® STP has been developed as a specialist coating to complement our premium low odour range that includes our flagship polyurethane product, Decothane Ultra. Both products in the range emit virtually no odour when compared to many other liquid systems, which makes them ideal for use on the roofs of occupied buildings such as hospitals, food manufacturing plants and schools.

The single pack, solvent free, cold applied liquid membrane is reinforced using a polyester fleece and is installed wet-on-wet. This means that the polyester reinforcement fleece is first saturated with Sikalastic® STP, bonding the membrane to the substrate, with the surface layer then applied onto the bonding coat whilst still wet, so forming a single seamless membrane of uniform thickness. The saturation of the fleece determines the correct application rates, making material consumption easy to monitor and verify. The advantage of this type of application is that on smaller roofs a one day application may be possible, because there is no need to wait for drying between coats.



SIKALASTIC®
STP

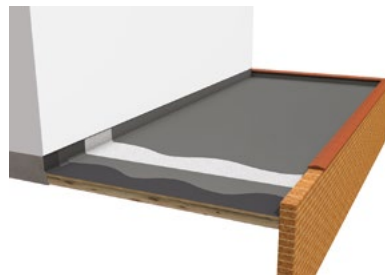
SPECIALIST ONE DAY SOLUTION FOR SENSITIVE SITES



SYSTEM FEATURES:

- **Low Odourless** – minimises the chance for disruption to the operation of the building due to nuisance odours
- **Solvent free** – low VOC (Volatile Organic Compounds) reduces impact on the environment
- **Wet-on-Wet Application** – membrane and reinforcement applied in one operation, minimising time on site and reducing labour costs
- **Cold Applied** – eliminating the risk of fire on an occupied building during installation
- **Seamless** – eliminates the possibility of joint failure through poor workmanship
- **Guarantees** – system is backed by our single point guarantee, covering the entire roofing system from the deck upwards, and the workmanship of our Quality Assured Contractors will give you peace of mind
- **Full Service Package** – this includes a consultation and roof survey, design and specification, all with guarantee and site support for every application
- **BBA certification** – coming soon

Sikalastic® STP PRODUCT RANGE



System build up:

- Sikalastic®-650
- Sikalastic® Fleece 120
- Sika Cleaner P

SIKALASTIC®
STP



TRAINING COURSES FOR ROOFING CONTRACTORS



Sika offers a range of training courses to ensure that contractors who apply our products provide quality workmanship. All courses are conducted by one of the Sika Roofing Applications team in the purpose-built Training Academy at Sika office in Preston.

CERTIFIED CONTRACTOR TRAINING SIKA LIQUID PLASTICS APPLICATOR TRAINING

The training course, designed exclusively for our Certified Contractors, focuses on the correct application and installation techniques for installing Sika Liquid Plastics Roofing Systems.

The two day training course is designed to ensure that the Contractors understand the requirements of working on Sika-Liquid Plastics' roofing systems, combining a mixture of theory, demonstrations, chat, videos and practical application work. All trainees finish with a theory based test, to ensure that the contractors have listened and learnt throughout the two days. Comprehensive information is provided after the course to allow trainees to concentrate on practical elements.

BASIC COMPETENCY PROGRAMME (BCP)

Sika Liquid Plastics' training course called the 'Basic Competency Programme (BCP)' has been developed as a roofing industry initiative and is led by the Liquid Roofing and Waterproofing Association (LRWA). This is the first time that manufacturers' training has been officially recognised and has been seen to satisfy the requirements of a red, experienced worker Construction Skills Certification Scheme (CSCS) card.

There are currently 600,000 contractors in the UK who are believed to have the wrong CSCS card for the skill level of the job that they do, therefore the BCP is a major initiative to address the problem. This is a quick, easy and cost effective way to get trained and access the correct colour CSCS card. The course is delivered by Sika at our Training Academy in Preston.

The programme is aimed at experienced operatives with a minimum of two years' experience on site. Having obtained a BCP Certificate an operative can then apply to upgrade from a green card to a red, experienced worker CSCS card, with immediate effect assuming their standard health and safety accreditation is up to date. The operative should then work towards achieving a blue skilled worker card within three years.

The course includes:

Two days Sika Liquid Plastics product training and one day BCP content which covers:

- Health & Safety
- Roof Construction
- Design of Flat Roofs
- Contract Planning
- Types of Liquid Applied Systems







INTRODUCTION TO SIKA LIQUID PLASTICS

The seminar, designed exclusively for our Certified Contractors, is intended to cover the background, administration requirements and our support services, also highlighting technical aspects of working with Sika Liquid Plastics, including wind loading. We will also cover site practices related to our liquid applied roofing products, and offer practical advice, particularly relevant to estimating, design, ordering and site management.

HOW TO APPLY

<http://ow.ly/VzLU30ckae6>

GUARANTEE OFFERINGS

			
Standard Cover Options			
Sika Liquid Plastics Materials	✓	✓	✓
Standard Details	✓	✓	-
Workmanship (cover by Installing Contractor)	✓	✓	-
Liability	✓ (Decothane £500k and Sikalastic® £250k, limited to contract value)	✓ (£250k)	(See Guarantee)
Direct Consequential Loss Cover	✓ (See Guarantee)	✓ (See Guarantee)	(See Guarantee)
Public & Products Liability Insurance Cover	✓	✓	✓
IBG (Insurance Backed Guarantee)	#	#	#
Extended Cover Benefits			
Bespoke Specification (& Condition Report, where applicable)	✓	✓	-
Project Specific Wind Uplift Calculation	✓	✓	-
Thermal Calculations & Condensation Risk Analysis (DecoTherm Insulation)	✓	✓	-
Bespoke Details	✓	-	-
Professional Indemnity (PI) Insurance Cover	✓	✓	-
Site Inspections (Interim & Final Sign off)	✓	✓	-
Installation Certificate* (Insolvent Contractors, Errors in Inspections or Design)	✓ (See Guarantee)	-	-
Product Ranges available for each Guarantee Offering			
	Decothane Decothane Decothane Ultra Decothane Root Resistant Sikalastic® Sikalastic®-625N Sikalastic® Rapid Sikalastic® STP (650)	Decothane Decothane Decothane Ultra Decothane Root Resistant Sikalastic® Sikalastic®-625N Sikalastic® Rapid Sikalastic® STP (650) Sika Pro-Tecta Sika Pro-Tecta WP	Decothane **Decothane **Decothane Ultra **Decothane Root Resistant Sikalastic® Sikalastic®-625N Sikalastic® Rapid Sikalastic® STP (650) Sika Pro-Tecta Sika Pro-Tecta CE Sika Pro-Tecta WP
Sika Liquid Plastics Contractor Programme			
		 Verified Contractor	 Verified Contractor

* Should the Sika Certified Roofing Contractor cease trading, Sika Limited will cover defects in the installation of the Materials due to workmanship or the advice/recommendation given in the Specification.

** When installed by Sika Certified Roofing Contractor or Verified Contractors.

Optional by others - Independent Insurance to cover Contractor Insolvency is also available through FCA approved Insurers, not Sika Limited.

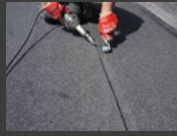
SIKA FULL RANGE SOLUTIONS FOR CONSTRUCTION:



LIQUID APPLIED ROOFING



SINGLE PLY ROOFING



BITUMINOUS ROOFING



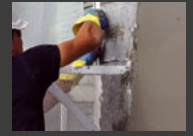
CONCRETE



CONCRETE REPAIR



STRUCTURAL STRENGTHENING



BUILDING FINISHING



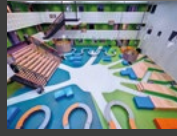
WATERPROOFING



JOINT SEALING



FAÇADES



FLOORING



INDUSTRY



DISTRIBUTION



WHO WE ARE

Sika Limited and Sika Ireland Limited are part of the global Sika Group, specialising in the manufacture and supply of chemical based products. Sika has a leading position in the development and production of systems and products for bonding, sealing, damping, reinforcing, and protecting in the building sector and the motor vehicle industry. Sika has subsidiaries in 100 countries around the world and manufactures in over 300 factories. With more than 25,000 employees Sika generates annual sales of CHF 8.1 billion (£6.6 bn). We are also committed to providing quality, service, safety and environmental care.

In the UK and Ireland, we provide market-leading solutions for concrete, waterproofing, roofing, flooring, refurbishment, sealing & bonding, and industry, and have manufacturing sites in Welwyn Garden City, Preston, Leeds, Wishaw and Dublin with more than 1000 employees and a turnover of more than £270 million.

The information, and, in particular, the recommendations relating to the application and end use of Sika® products, are given in good faith based on Sika's current knowledge and experience of the products when properly stored, handled and applied under normal conditions. In practice, the differences in materials, substrates and actual site conditions are such that no warranty in respect of merchantability or of fitness for a particular purpose, nor any liability arising out of any legal relationship whatsoever, can be inferred either from this information, or from any written recommendations, or from any other advice offered. The proprietary rights of third parties must be observed. Please refer to our homepage www.sika.co.uk for our current standard terms & conditions applicable to all orders. Users should always refer to the most recent issue of the Product Data Sheet for the product concerned, copies of which will be supplied on request.



SIKA LIMITED

Liquid Plastics
Sika House
Miller Street, Preston
Lancashire, PR1 1EA
United Kingdom

Contact

Phone +44 1772 259781
Fax +44 1772 255672
E-Mail liquidplastics@uk.sika.com
www.liquidplastics.co.uk
@LiquidPlastics

SIKA IRELAND LIMITED

Sika House
Ballymun Industrial Estate
Dublin 11
D11 DA2V
Ireland

Contact

Phone +353 1 862 0709
Fax +353 1 862 0707
E-Mail info@ie.sika.com
www.sika.ie
@Sikalreland

