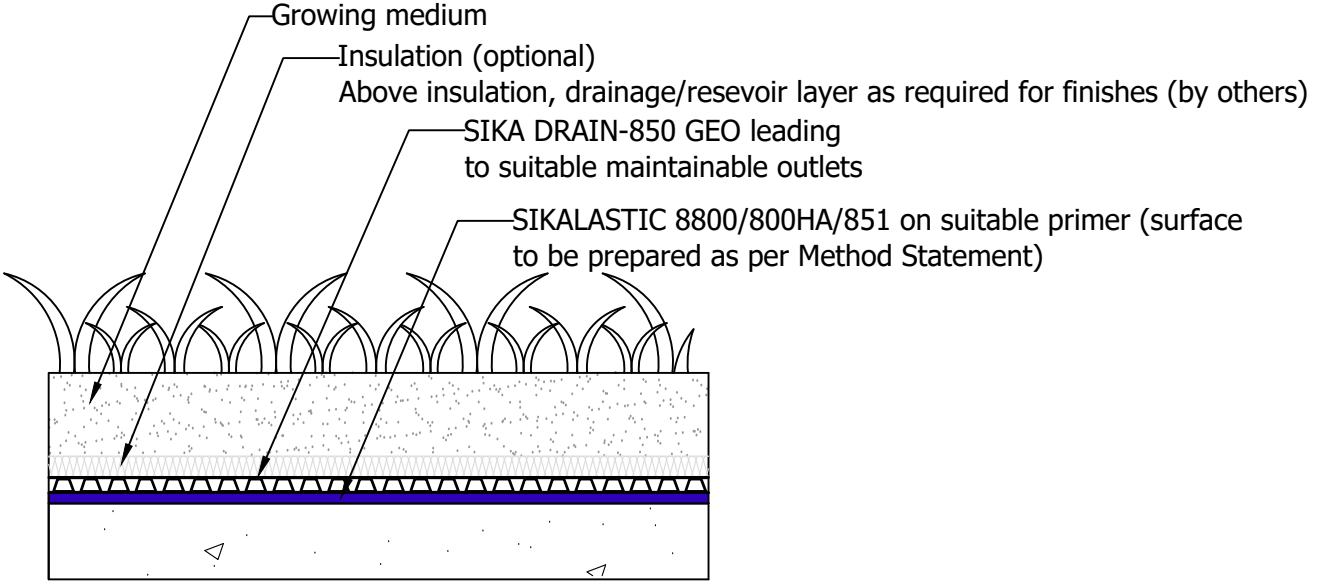
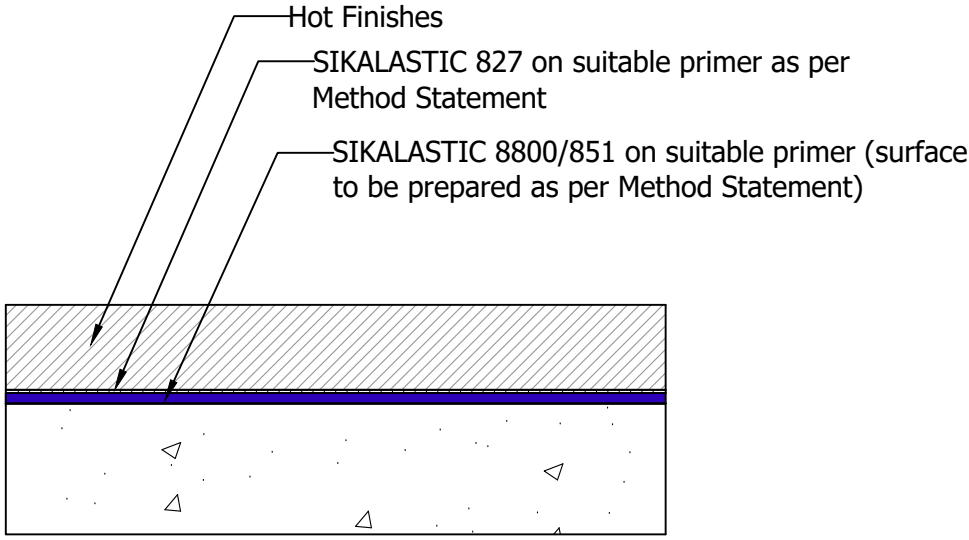
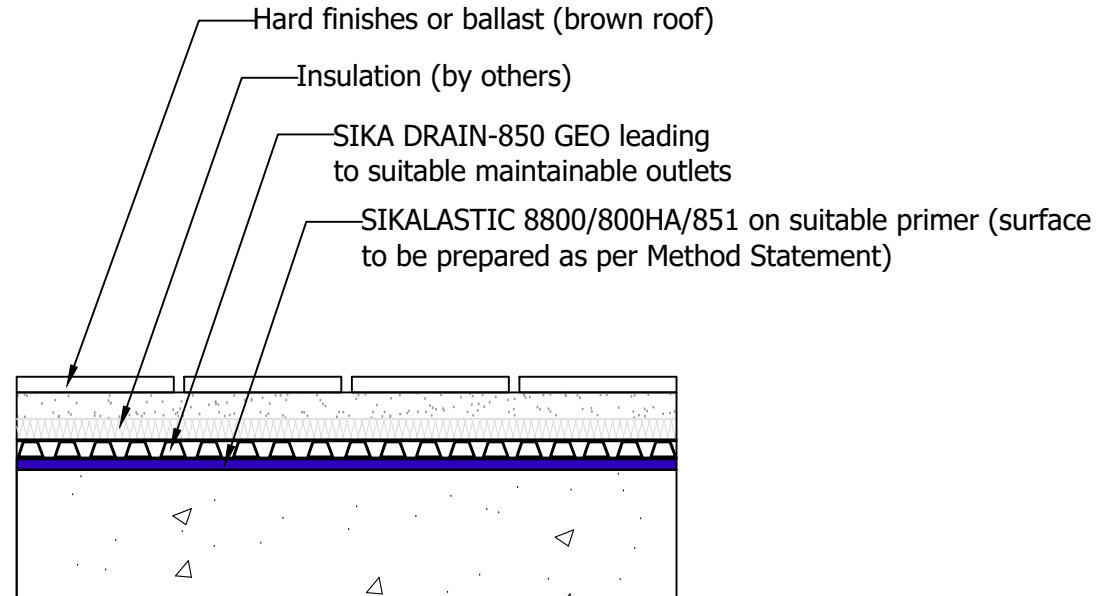
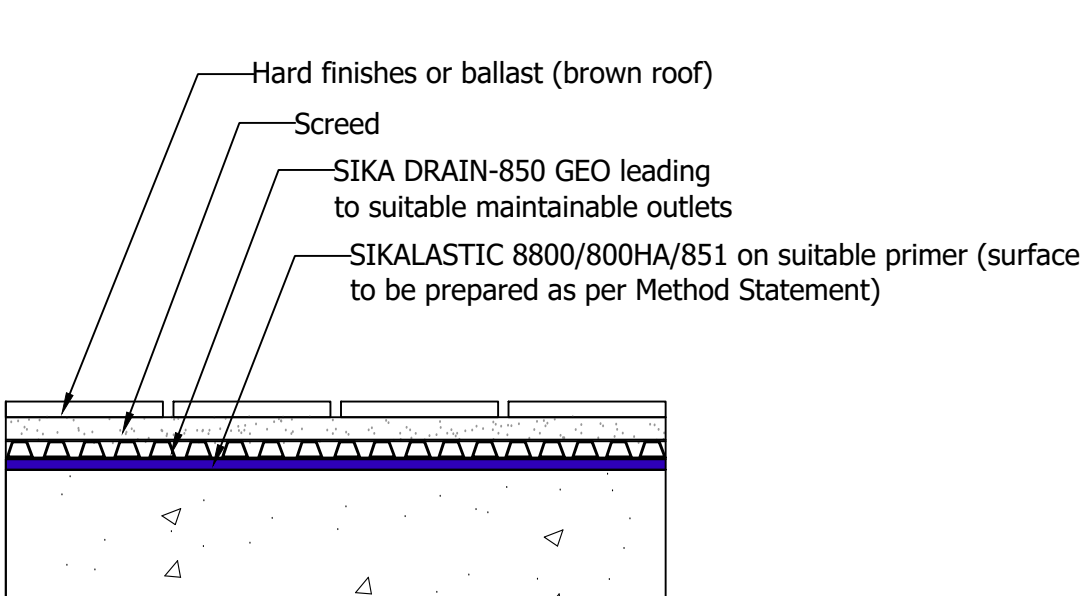


SIKALASTIC 8800/800HA/851 BUILD UP DETAIL



Note:
 Substrate should be reinforced concrete or structural topping, cast to achieve a fall of 1:80 leading to suitable, maintainable outlets.
 Sikalastic 800HA is not suitable for use with hot finishes.

A DRAWINGS MUST ALWAYS BE REVIEWED BY A DESIGN SPECIALIST AND IF NECESSARY MODIFIED TO ENSURE SUITABILITY FOR THE SPECIFIC APPLICATION.
 The information contained herein and any other advice are given in good faith based on Sika's current knowledge and experience of the products when properly stored, handled and applied under normal conditions in accordance with Sika's recommendations. The information only applies to the application(s) and product(s) expressly referred to herein and is based on laboratory tests which do not replace practical tests. In case of changes in the parameters of the application, such as changes in substrates etc., or in case of a different application, consult Sika's Technical Service prior to using Sika products. The information contained herein does not relieve the user of the products from testing them for the intended application and purpose. All orders are accepted subject to our current terms of sale and delivery. Users must always refer to the most recent issue of the local Product Data Sheet for the product concerned, copies of which will be supplied on request.

**ALL DETAIL DRAWINGS ARE
FOR UK USE ONLY
DO NOT SCALE FROM
DRAWING**

THIS DRAWING IS THE
CONFIDENTIAL PROPERTY OF SIKALASTIC
LIMITED AND MUST NOT BE
REPRODUCED EITHER WHOLLY OR
PARTLY. ALL RIGHTS IN RESPECT OF
PATENTS, DESIGN AND COPYRIGHTS
ARE RESERVED. SIKALASTIC LTD.
WWW.SIKALASTIC.CO.UK



Drawn by	Checked by	Approved by	Date
Description			
SIKALASTIC 8800/800HA/851 BUILD UP DETAIL			
Drawing No. SLA03	Issue C	Sheet 1 / 1	

6 | 5 | 4 | 3 | 2 | 1

D

D

C

C

B

B

A

A

6 | 5 | 4 | 3 | 2 | 1