



## Mohammedi Mosque Tough Floor for Busy Kitchen



The busy kitchens of the Mohammedi Mosque in Ealing required a tough slip resistant floor finish with excellent impact and chemical resistance. The solution was a 9mm trowelled screed of **Sikafloor®-20 PurCem**, a water based polyurethane screed. This offers a wide range of bright colours and is the toughest in its class.

Coverdale Construction achieved extremely high standards of detailing to provide a seamless, easy to clean, hygienic and very tough floor.

## Leopold St Car Park Sika Offers Complete Solution

**Sika** concrete coatings and car park decking systems have been used exclusively in the refurbishment of Leopold Street multi-storey car park in Ramsgate, with the objective of obtaining the Secured Car Park Award.

Thanet Council appointed Makers UK to carry out the work. Concrete repairs were completed using the **Sika® MonoTop®** repair system. The lower floors were coated with **Sikafloor®-261** intermediate decking system and the upper deck was prepared and coated with **Sikafloor®-350/359 Elastic**, a durable, polyurethane membrane decking system.



## FAX BACK

# 01707 329129

I would like more information:

Sika-Trocac Roofing

Sika-Armorex Dry Shake Floors

Pumped Screeds

Technical Seminar

Anhydrite Screeds

Resin Systems

Chemically Resistant Coatings

Antistatic Flooring

Other \_\_\_\_\_

Name: \_\_\_\_\_ Company: \_\_\_\_\_ Position: \_\_\_\_\_

Address: \_\_\_\_\_

Telephone: \_\_\_\_\_ Fax: \_\_\_\_\_ Email: \_\_\_\_\_

Sika at Work / Issue 12 - April 2004



### Sika Limited

Watchmead, Welwyn Garden City, Herts, AL7 1BQ

Tel: 01707 394444 Fax: 01707 329129 Email: technical@uk.sika.com

## Industrial Flooring

### Walkers Snackfoods

#### A crisp solution from Sika

Walkers Snackfoods appreciate the benefits of working with **Sika**, selecting solutions that are truly under one roof, and ensuring quality and best value. The new production facility at Leicester is kept dry from above with a **Sikaplan<sup>®</sup>** reinforced PVC membrane roof, whilst the floor slab is built with **Sika Watertight Concrete**, incorporating **Sika<sup>®</sup> Viscocrete<sup>®</sup>** technology to make sure it stays dry from below. And the finishes Walkers are now starting to use? Why **Sikafloor<sup>®</sup>** ....Naturally.



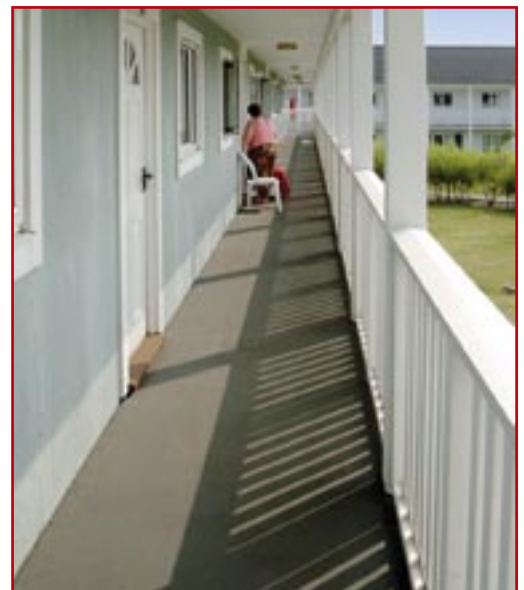
IRL Group of Loughborough have improved the Health and Safety to existing facilities by installing a 'yellow brick road' around the site, to keep people on the safest route.

### Hi De Hi

#### Sikafloor Treatment for Butlins

Butlins Holiday Camp at Skegness has two holiday villages, comprising 15 blocks of two storey apartments on each. A few years of heavy foot traffic had worn the original floor paint applied to the balconies that connect the apartments, revealing the composite cement/wood substrate.

Specialist contractors BIF Services of Retford inspected the 5,000 sq. metres of walkways and specified **Sikafloor<sup>®</sup>-400**, a highly elastic polyurethane coating system.



**Sikafloor<sup>®</sup>-400** was the perfect choice. It is flexible, non-slip, UV resistant, waterproof and durable with good crack-bridging properties. It is quick and easy to apply and looks great.

News and Information from **Sika Limited** United Kingdom



# Royal Mail

## Daventry Facility Sorted by Sika

With some 10 million square feet of **Sikafloor®-1 MetalTop** supporting the day to day activities of the Royal Mail at their sorting facilities across the UK, it was the obvious choice for the new 180,000 sq. foot APC in Daventry.

**MetalTop®** is a dry-shake hardener that looks good, is exceptionally durable and has a lifetime guarantee. The metallic aggregate contains titanium, which makes it the toughest floor available for industry.

Specialist contractor Stanford Industrial Flooring completed the project in good time and to an exceptionally high standard.



# MSA Ludgershall

**Sika's** involvement with MSA Ludgershall dates back to the early 90's with holding repairs and polymer modified screeds to busy gangways. During the recent overhaul and maintenance of the floors to the stockrooms **Sikafloor®-Level 25**, a flowing cement based screed was used to quickly level the floors after extensive breakout of the old pressed wood tiles and bedding screed.

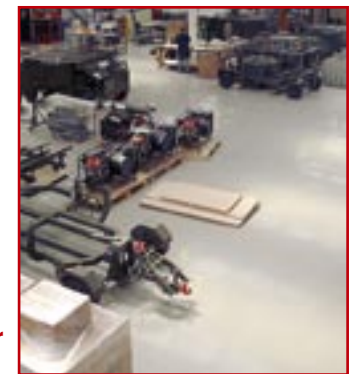


Contractors William Dunk of Worcester took exceptional precautions to keep dust and disruption to a minimum during the works. The final finish of **Sikafloor®-261** as an epoxy self smoothing screed completed the makeover to give a durable and economic finish.

# MEL Aviation

## Sika Floors Aviation Firm

When MEL Aviation moved into new premises in Sudbury, Norfolk, one of the major concerns was the flooring. The company repair, design and manufacture airborne safety and ground equipment, and needed a floor that was durable, easily maintained and would provide a clean environment. **Sikafloor** provided the perfect solution.



**Sikafloor®-261**, a self-smoothing, epoxy based system was laid by Hardwicks Flooring, (who were 2003 FerFA "Contractor of the Year"), to a thickness of 2mm onto the primed concrete slab. An 80 sq. metre equipment cleaning area was floored with **Sikafloor®-20 PurCem**, to provide a durable surface able to withstand corrosive chemicals and the thermal shock of steam cleaning.



# Tatu Bar

## Natural Floor for Belfast Bar

**Tatu**, a new leisure bar in Belfast, has been designed using materials with a 'natural' feel. This concept included the floors, which needed to be aesthetically pleasing, durable, light-fast and easily maintained. A major consideration was health and safety requirements, with the need to avoid dirt trap locations associated with some sheet or tile systems.



A concrete floor was selected incorporating **Sikafloor®-2 SynTop** shake surface hardening system in a classic grey colour. As well as satisfying all requirements, being integral with the floor slab this system was much faster than overlaying with conventional floor coverings.

The concrete slab contained **Sikament® Superplasticiser** for high workability and strength. **Sikafloor®-ProSeal** was applied to the surface to cure and seal against spills.

# Sika on the Trail

## Snail Inspires Childrens Home

**Sika** in the Netherlands have recently been involved in a highly unusual and wildly creative use of their materials. A new home for children with life-threatening diseases has been built with different zones, from desert to jungle and from day to night. The building is designed as a huge snail, with a 'snail trail' built into the floor, to lead the children through the zones in a journey of adventure.

The floor also needed to have a soft and warm feel.

**Sikafloor®-300UV** was specified. This unique, permanently elastic polyurethane flooring system, gives a high degree of foot comfort and thermal insulation.



The stencilled graphics were created using **Sika Icosit®-EG5**. While the **Sikafloor®-300UV** was still liquid, Dutch artist Mirjam Bakker, wearing spiked shoes, walked backwards throughout the building, creating the trail with a watering can, pouring in a contrasting colour.

The entire floor was sealed with a clear matt coat of **Sikafloor®-302W Elastic**, to give a tough, hard wearing, flexible and attractive finish.

All joints between the floor sections were sealed with **Sikaflex®-PRO 3WF**, a tough, elastic PU sealant.

# Spitalfields Market

## Sika Sorts Floor Problem

A corrosive problem with the floor at the new Spitalfields Market in East London has been solved with the application of a flooring system from **Sika-Armorex**. The 3,000 sq. metre area within the hall, houses 115 trading units for wholesalers dealing in fruit, vegetables and flowers. Acid from the fruits had penetrated into the original concrete floor, causing deterioration and a slippery surface.

Extensive tests were carried out, and following a one year trial, **Sikafloor®-20 PurCem** was specified in favour of other systems to provide a heavy duty polyurethane screed that is hard wearing and chemical and slip resistant. The material is also odourless and food safe.



**Sikafloor®-20 PurCem** also had to cope with the high residual moisture in the slab resulting from the daily wash-down of the road sweepers. The whole job was completed within a 27 hour time window by Mitie Flooring.



## Royal Bournemouth Surescreed 10 Times Faster

**Sika Sureflow**, a one component, easily pumped synthetic anhydrite screed, has recently been laid at the new MRI unit of the Royal Bournemouth Hospital. Developed jointly with leading minerals processing and distribution group, Francis Flower, **Sika Sureflow** is up to 10 times quicker, and less labour intensive than conventional semi-dry screeds.

Provided in specially adapted 8 cubic metre volumetric mixer trucks, **Sureflow** provides a self-placing smooth finish for the application of floor toppings and coverings as required.

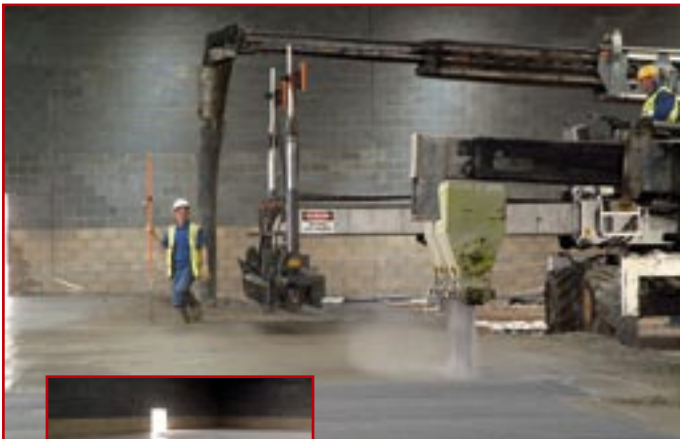
It can be laid without construction joints, and can be foot trafficked in 24 hours under normal curing conditions.



## Homebase Sika Provides Tough Floor

The latest Homebase store in Chichester, W. Sussex has just had a **Sikafloor®-2 SynTop** surface applied to its 6,000 sq. metre retail floor area. **Sikafloor®-2 SynTop** incorporates synthetic mineral aggregates in the blend and meets the BS criteria for severe abrasion resistance.

Twintec Industrial Flooring installed the steel fibre reinforced slab well within cost and time, to achieve an excellent finish.



## Rolls Royce Sikafloor Selected By Rolls-Royce

**Sika** specialist flooring systems have been installed by flooring contractors Zircon of Hull, in the assembly and paint-shop areas at the new Rolls-Royce manufacturing plant at Goodwood, covering a total of 35,000 square metres. This includes **Armorshield**, a BBA approved dry-shake system, producing an exceptionally tough and durable floor slab.

**Sikafloor** systems used within the plant assembly, surface technology and upholstery zones include **Sikafloor®-261**, a durable, epoxy, self-smoothing flooring system, and **Sikafloor®-262AS**, an anti-static epoxy flooring system for the areas of floor that require static dissipative properties.

**Sikafloor** systems are installed in BMW plants worldwide, most recently at their Oxford BMW Mini works, and the Hams Hall engine plant.



## Ealing Car Park Safe

**Sika** materials were used exclusively in the total refurbishment of Springbridge Road multi-storey car park in the London Borough of Ealing, to extend the life of, and give a lighter and safer environment to users of the car park. Cracks in the existing asphalt screed on the top deck had allowed ingress of water and de-icing salts to the lower framework and decks, with the subsequent deterioration of the concrete structures.

Main contractors Makers UK Ltd, used **Sika** concrete repair systems, and corrosion inhibitors to make good and stabilise all defective concrete. Soffits and pillars were coated with **Sikagard® Elastocolor® W** anti-carbonation decorative coatings.

The lower decks, each of 3000 sq. metres, were prepared and coated with **Sikafloor®-261**, a durable, solvent free, epoxy resin intermediate decking system.

The asphalt was removed from the top deck, and following repairs and preparation, **Sikafloor®-355**, a polyurethane decking system was applied. This was over-coated with **Sikafloor®-359** polyurethane seal coat, to give a tough, waterproof, flexible surface with good colour stability and weather resistance.

