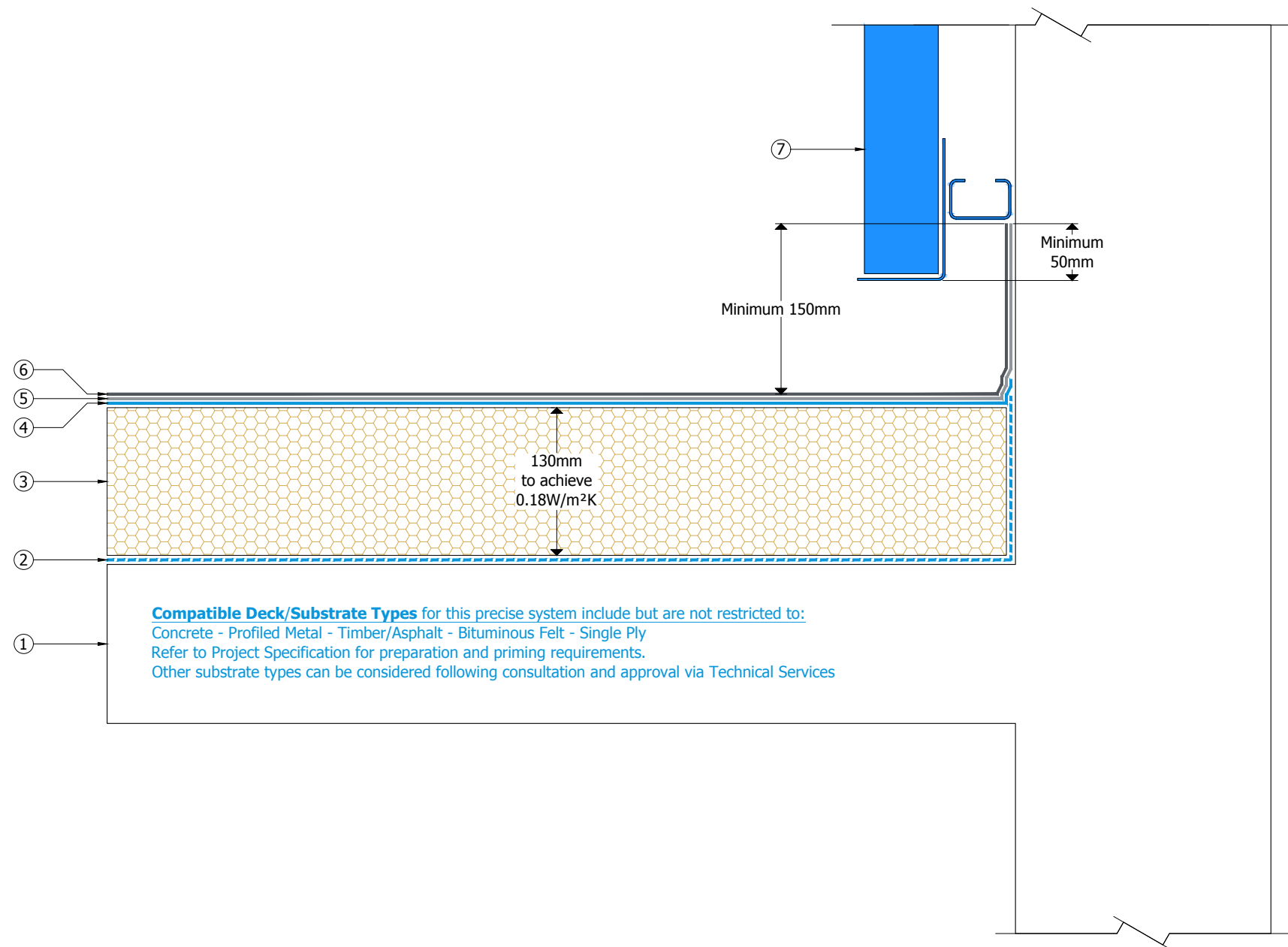
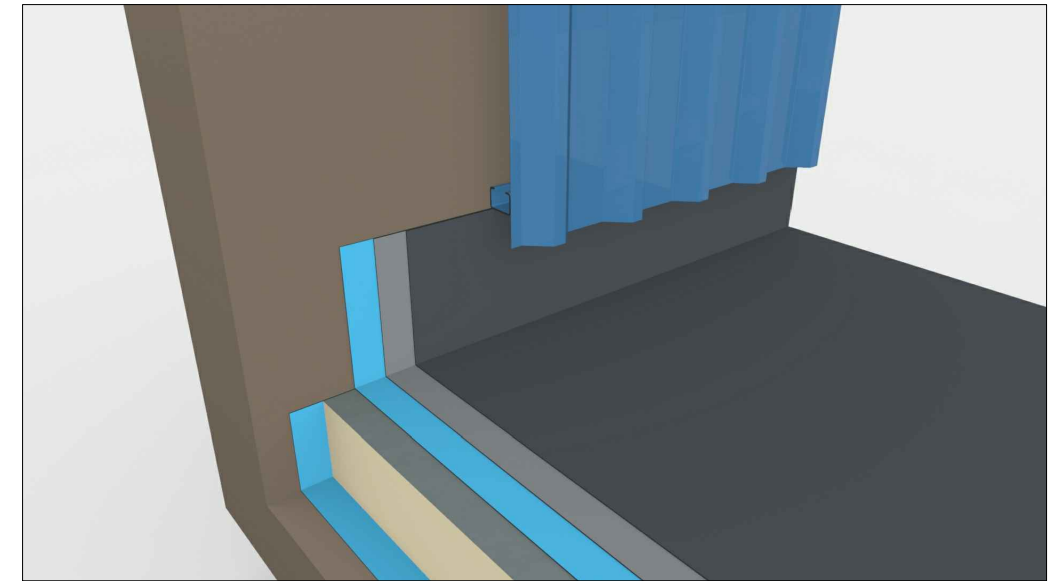


Key

- ① Existing deck/substrate prepared and primed in strict accordance with Sika Liquid Plastics Project Specification
- ② **S-Vap Self Adhesive Vapour Barrier** [or suitable alternative **by others**] applied in strict accordance with Sika Liquid Plastics Project Specification
- ③ **Decotherm PIR Insulation** [or suitable alternative **by others**] bonded with specified **Sika Adhesive** in strict accordance with Sika Liquid Plastics Project Specification
- ④ **Self Adhesive Carrier Membrane** [or suitable alternative **by others**] applied in strict accordance with Sika Liquid Plastics Project Specification
- ⑤ **Sika Liquid Applied EMBEDMENT/BASE COAT** fully reinforced with specified **Sika Reinforcement** in strict accordance with Sika Liquid Plastics Project Specification
- ⑥ **Sika Liquid Applied TOP COAT** applied in strict accordance with Sika Liquid Plastics Project Specification
- ⑦ **EXISTING CLADDING:** Release existing cladding to allow access to the upstand during waterproofing application and reinstate to provide minimum 50mm weathering lap
NOTE: Exercise caution during exposed periods to prevent water ingress
NEW CLADDING: Installed in accordance with manufacturers instructions to provide a minimum 50mm weathering lap to the exposed edge of the Sika Liquid Applied Membrane



Drawing Status:	CONSTRUCTION	
Project N ^o		
DWG N ^o	Revision	
Project:		
Drawing Title:	Built Up Warm Roof Application Upstand with Existing/New vertical cladding	
Scale:	NTS @ A3	Drawn: GRW
Date:	June 2017	
This drawing is the confidential property of Sika Limited and must not be reproduced in whole or in part. All rights in respect of patents, design and copyrights are reserved. Moreover it is solely intended to illustrate the correct application of Sika Liquid Plastics products and systems, and must be read in conjunction with the appropriate specification and current issue of relevant Product Data Sheets. Elements bearing reference to structural and/or thermal design are shown indicatively and should not be used for any aspect of project design without consulting the relevant authorities.		