

POINTING GUIDE

FLUSH JOINTS IN BRICK SLIP SYSTEMS

The pointing of flush joints in brick slip systems should be completed in four operations.

1. Mortar should be injected into the joints so there is excess protruding from the face of the brick slips as shown in photo 1 and 2 below.
2. When the mortar has stiffened up, but is still pliable enough to be compressed without staining the adjacent brick face, it should be forced into the joint using a suitable finger trowel as shown in photo 3 and 4.

Photo 1

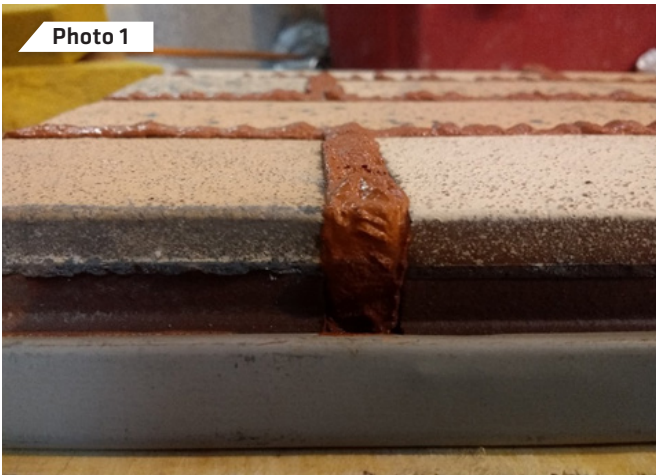


Photo 2

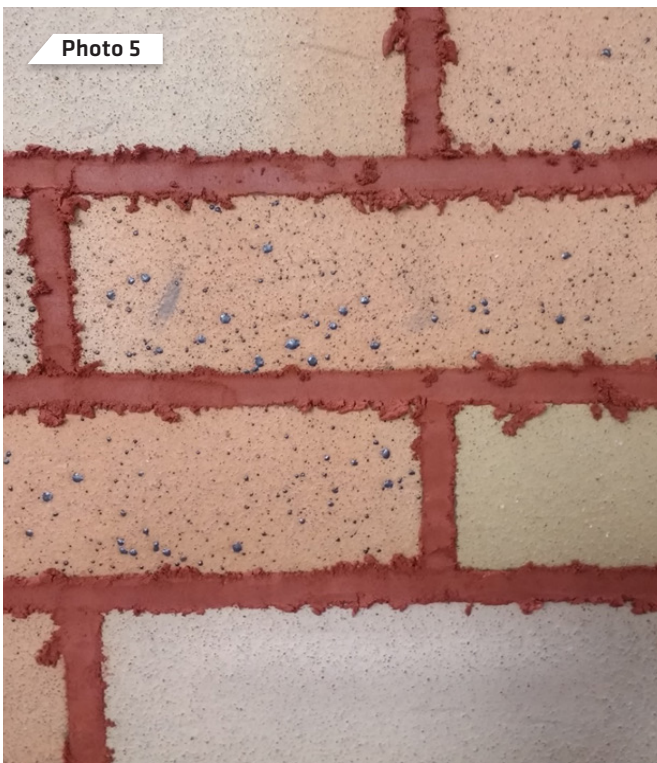


Photo 3





The flattened compressed mortar, as shown in photo 5, 6 and 7, should be allowed to dry further before the excess is cut back to the face of the brick slip.



3. The mortar can be cut back to the face of the brick slip using a suitable trowel as shown in photographs 8 to 14.

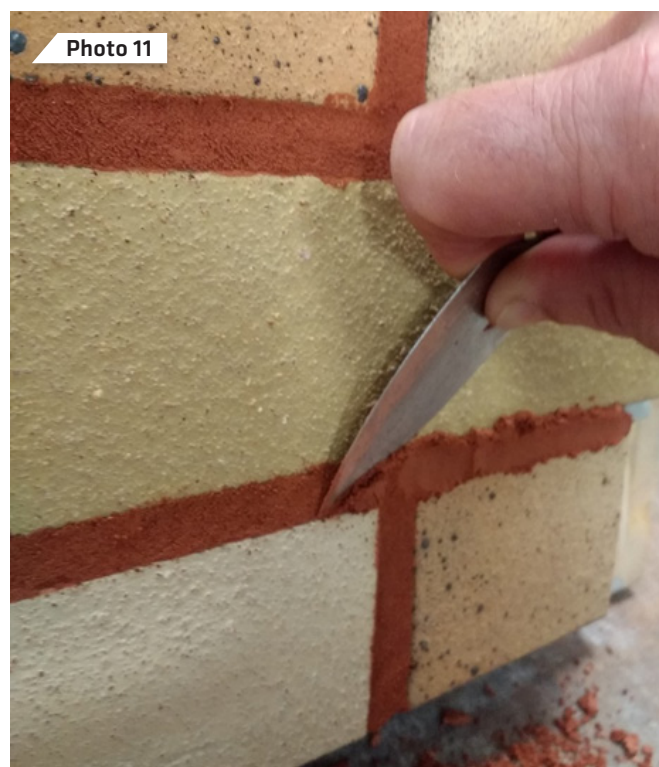
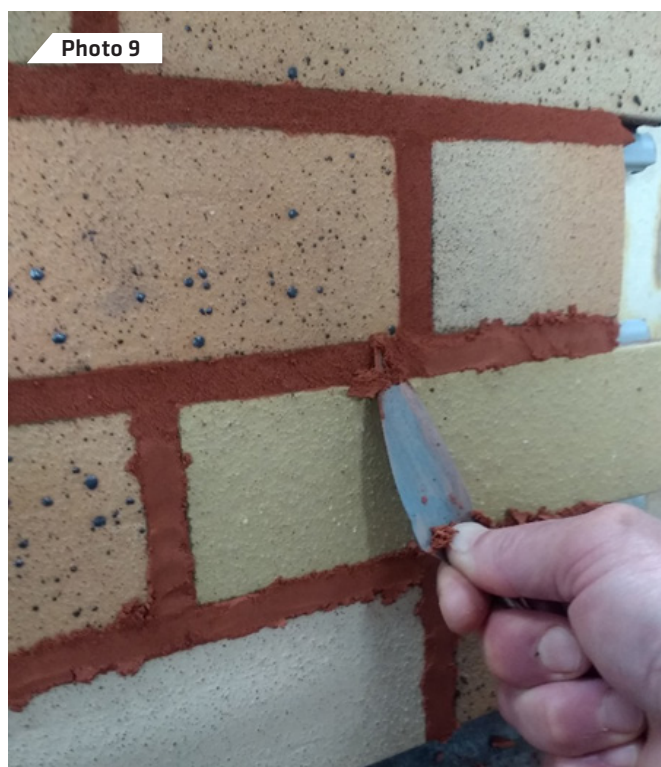


Photo 12



4. The final operation is to remove any unsightly mortar build-up on the brick slip arises, and this should be completed when the mortar joint can be lightly brushed without staining the adjacent brick faces.

Use the corner of the brush face in a chopping motion and brush in the directions indicated on photo 15 and 16.

Photo 13



Photo 15



Photo 16



Photo 14



Photo 17



If steps 1-4 detailed above are adhered to, the resultant work should be relatively mortar stain free, as shown in photo 17 above.

Please Note

For additional support information, please refer to the **Facade Mortars Guidelines, Pointing of Brick Cladding Systems** and the **Sika Technical Data Sheet** for information on preparation, mixing and general data relating to weather conditions when using Sika pointing mortars.

Sika Limited will provide technical assistance if necessary and website and telephone assistance is also available, please visit www.sika.co.uk/buildingfinishing.

Sika Limited reserves the right to replace or change this information at any time, and Sika Limited shall not be liable for any consequential or other damages resulting from, or in connection with these procedures.