



SIKA AT WORK

FIELDHEAD HOSPITAL, WAKEFIELD

ROOFING: Sika-Trocal® Type S Single Ply Membrane

Sika-Trocal®



FIELDHEAD HOSPITAL WAKEFIELD



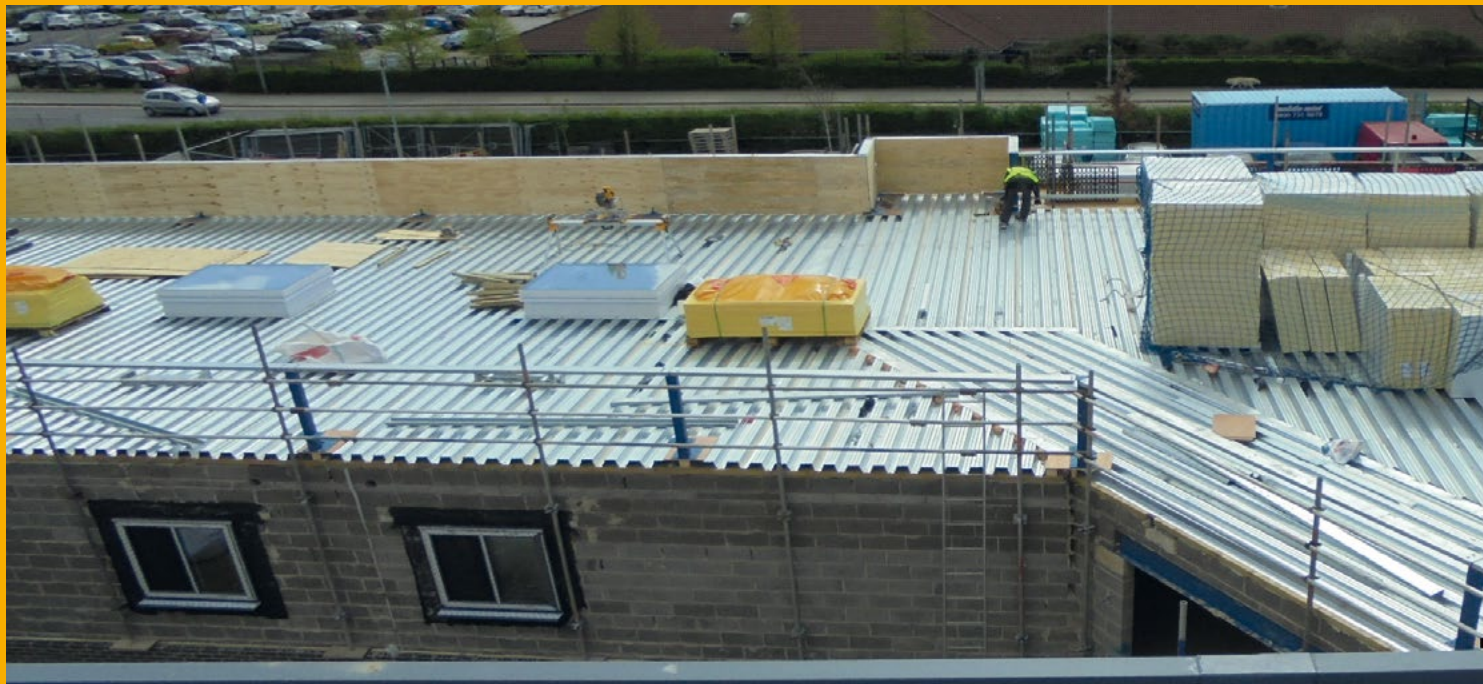
SIKA'S FLEXIBLE MEMBRANE PROVES CRUCIAL TO COMPLEX HOSPITAL ROOF INSTALLATION.

The flexible, easy-to-apply properties of Sika-Trocral's watertight roof system proved the ideal solution for a complex installation at a large inpatient facility.

A new-build facility at Fieldhead Hospital in Wakefield, West Yorkshire was established to replace older ward areas including patient accommodation areas and treatment rooms. The construction, taking place in multiple phases, includes the installation of a 4,300m² roof.



FIELDHEAD HOSPITAL WAKEFIELD



The first phase, which began in January 2017, involved a complex operation to provide a smart, watertight system to an unusually-shaped, multi-directional roof featuring a myriad of details including plant materials and rooflights. For this challenging application, Sika-Trocal® Type 'S' system was selected.

The 2mm-thick, mechanically-fastened membrane was affixed to the building's metal decking. Renowned for its flexibility and the ease with which it accommodates intricate roofing details, as well as its superb durability and watertight properties, the homogenous single-ply Type 'S' system was installed across an initial 2,000m² area by contractors FCB Roofing – on behalf of Interserve Construction – using Sika-Trocal's unique laminated metal discs.

Tapered insulation to a thickness up to 400mm was installed in conjunction with the slate grey Type 'S' system. This accommodated the roof's intricate multi-directional design and its various falls. For the roof's 2-metre verticals and curved areas, Sika-Trocal parapet trim provided a crisp, uniform finish.

Tony Comrie, Contracts Director at FCB Roofing, said: "Potentially, this was an extremely challenging project due to the roof's size and design. Few, if any, waterproof systems would've been able to accommodate the various details within the hospital roof's design. Sika-Trocal® Type S membrane, due to its flexibility and the ease with which it is installed, meant we were able to complete this complex roof installation far more quickly and easily than other membranes would've allowed."

The latest phase of the Fieldhead Masterplan project was completed in July 2017 with the redevelopment due for completion in 2019. Thanks in part to the adaptable, watertight properties of Sika-Trocal® Type S system, patients at this much-valued psychiatric facility have a new building in which to reside in long-term comfort and safety.

PROJECT PARTICIPANTS

Size: 2000m²
Contractor: FCB Roofing

For further information call 0800 112 3865.

Our most current General Sales Conditions shall apply.
Please consult the Data Sheet prior to any use and processing.



SIKA LIMITED

Sika-Trocal
Watchmead
Welwyn Garden City
Hertfordshire, AL7 1BQ
United Kingdom

Contact

Phone +44 1 707 358500
Fax +44 1 707 377300
E-Mail Sika-Trocal@uk.sika.com
www.sikatrocal.co.uk
@SikaTrocal

Sika-Trocal®

