



SIKA EVERBUILD IN STADIA JOINT SEALANT SOLUTIONS



BUILDING TRUST





CONTENTS

4	Sika at a Glance
5	Full Range of Sealants
6	Falmer Stadium, Brighton
7	Millennium Stadium, Cardiff
8	London Stadium, Stratford
9	Welford Road Stadium, Leicester
10	Vicarage Road Stadium, Watford
11	Halliwel Jones Stadium, Warrington

KEY SIKA SERVICES



SIKA AT A GLANCE



FOR ALL YOUR SEALING AND BONDING NEEDS Sika Everbuild's expansive portfolio of sealants and adhesives offer a combination of battle-tested products with decades on the market and new, innovative products helping to move the industry forward.



FLOORING

Sika provide high-performance flooring and wall coating solutions for a full range of applications, including food production facilities, multi-storey car parks, shops, restaurants, hospitals, manufacturing facilities, schools and residential homes.



CONCRETE

Sika develops and markets numerous admixtures and additives for use in concrete, cement and mortar production. These products enhance specific properties of the fresh or hardened concrete, such as workability, watertightness, durability, or early and final strength.

**872
EMPLOYEES**

ARE DEDICATED TO RESEARCH AND DEVELOPMENT

**17,000
EMPLOYEES**

WITHIN THE SIKA FAMILY AROUND THE WORLD



FAÇADES & WINDOWS

Sika provides a wide range of glazing, bonding and sealing solutions that allow architects to achieve their creative vision, while ensuring it doesn't come at the cost of energy efficiency, weatherproofing and other important functions.



ROOFING

Combining performance with minimised environmental impact, our roofing systems and products protect buildings from all types of climate and weather conditions.



WATERPROOFING

Sika is committed to providing proven and economic watertight solutions for even the most challenging requirements. We consider the entire waterproofing process to the very last detail and can provide solutions for both new build and refurbishment projects. We have a wide range of systems for both keeping water in and keeping water out.

SIKA IS ESTABLISHED IN

93 COUNTRIES

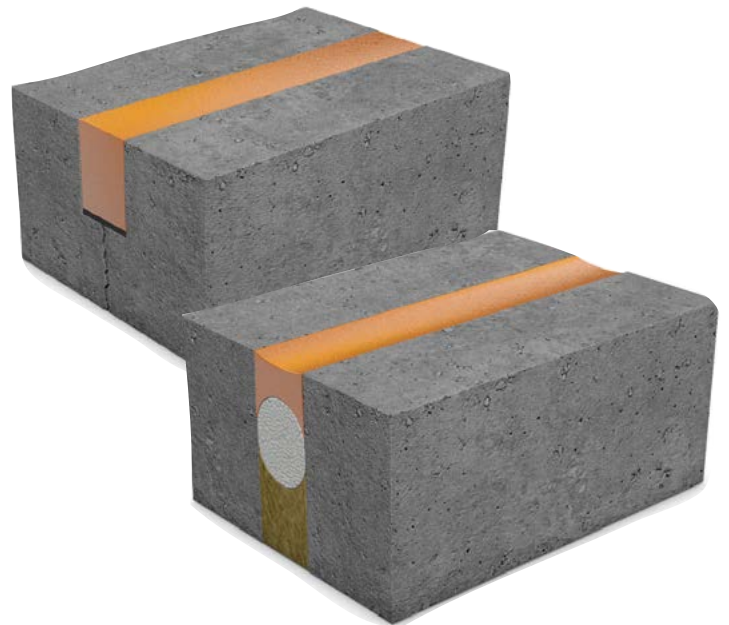
FULL RANGE OF SEALANTS

MOVEMENT AND SAW CUT JOINTS

- Ideal for stadiums
- Top seal for high traffic areas (i.e. seats and risers)
- High mechanical and chemical resistance
- Abrasion resistance
- Self levelling version available

THE PRODUCTS

- Sika® Everbuild Hybriflex SMP
 - Sika® Primer 3N
 - Sika® Everbuild Backer Rod
- Sikaflex® PRO-3
 - Sika® Primer 3N
 - Sika® Everbuild Backer Rod



EXPANSION JOINTS

- Ideal for non traffic areas in stadiums
- Wide range of colours
- Excellent weather resistance
- Adheres to a wide range of substrates

THE PRODUCTS

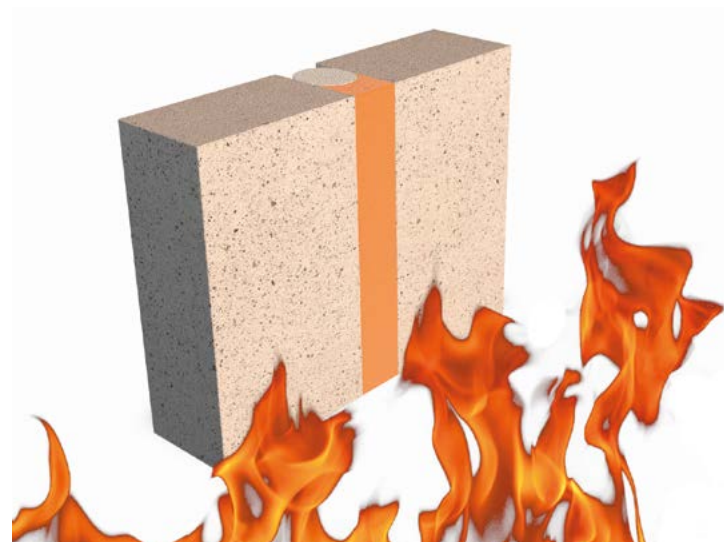
- Sika® Everbuild Tecnic Silicone 825
 - Sika® Everbuild Tecnic Sealant Primer P1 (porous surfaces)
 - Sika® Everbuild Tecnic Sealant Primer NP2 (non-porous surfaces)
 - Sika® Everbuild Backer Rod
- SikaHyflex-250 Façade
 - Sika® Primer 3N
 - Sika® Everbuild Backer Rod

FIRE PROTECTIVE SEALS

- Ideal for stadiums where a specific fire rating is required
- Top seal for high foot traffic areas i.e. concourse
- Abrasion resistance
- Internal block work
- Fire rated up to 4 hours

THE PRODUCTS

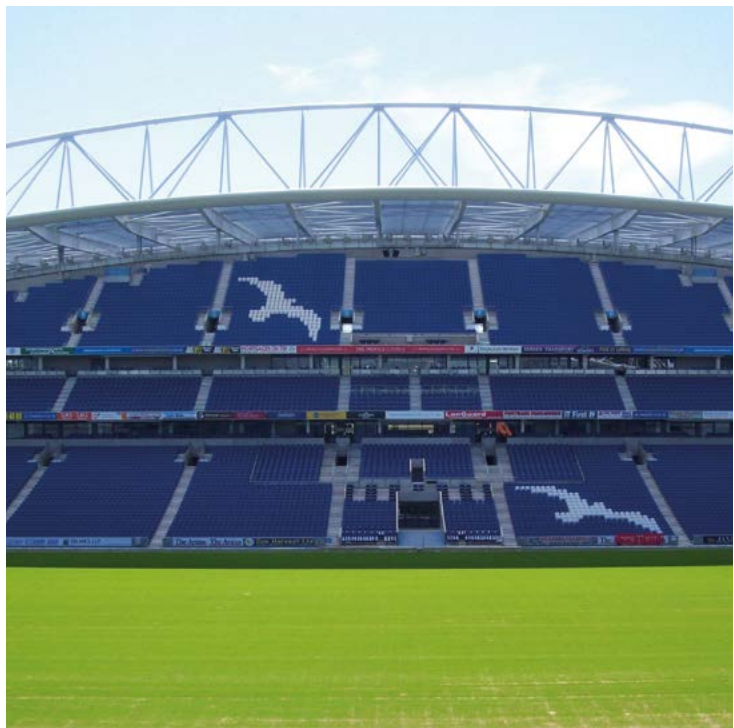
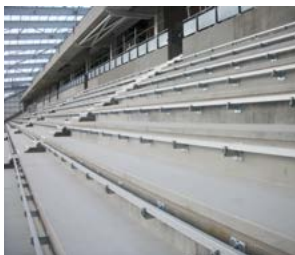
- Sika® Everbuild Hybriflex FR
 - Sika® Primer 3N
 - Sika® Everbuild Backer Rod
- Sika® Everbuild Tecnic Fire Sealant 400
 - Sika® Everbuild Tecnic Sealant Primer P1 (porous surfaces)
 - Sika® Everbuild Backer Rod
- Sika® Everbuild Tecnic Fire Sealant 300



FALMER STADIUM BRIGHTON

THE PROJECT Falmer Stadium, also known as American Express Community Stadium, or The Amex is the home of Brighton & Hove Albion Football Club. Designed by Architects KSS Design Group, the £92M project is set three storeys down into the ground with the capacity for 22,000 seats. After completion, another 8,000 seats were incorporated.

Sika® Everbuild supplied joint sealant for the terrace throughout the stadium using a dual seal system.



APPLICATION	SIKA EVERBUILD SOLUTIONS	FEATURES AND BENEFITS
Top seal in high traffic areas – seats and risers	Sika® Everbuild Hybriflex SMP	<ul style="list-style-type: none"> ■ Provides excellent resistance against foot traffic and abrasion ■ Movement capability $\pm 25\%$ ■ Outstanding slump resistance on wide vertical joints
Back seal where fire rating required	Sika® Everbuild Fire Sealant 400	<ul style="list-style-type: none"> ■ Fire rated up to 4 hours ■ Excellent acoustic properties ■ Movement capability $\pm 25\%$
Top seal in non foot traffic areas	Sika® Everbuild 825	<ul style="list-style-type: none"> ■ Low modulus silicone ideal for expansion and connection joints ■ Wide colour range
Internal sanitary areas	Sika® Everbuild Silicone S50	<ul style="list-style-type: none"> ■ Silicone sealant containing anti-fungal compound to prevent mould and fungal growth in areas of high humidity

MILLENNIUM STADIUM CARDIFF

THE PROJECT The Millennium Stadium also known as the Principality Stadium, designed by Blich Lobb Sports Architects, was originally opened in June 1999 and is the national stadium of Wales, home of the Wales national rugby union team. In 2014, the original expansion joints within the concrete terracing were found to have failed, resulting in water ingress. The project required cut-out of all original expansion joint sealant and then re-sealed using Sika Everbuild joint sealants.

Sika® Everbuild supplied joint sealant for the resealing of all expansion joints and other required areas on all 3 tiers.



APPLICATION	SIKA EVERBUILD SOLUTIONS	FEATURES AND BENEFITS
Sika Everbuild supplied joint sealant for the resealing of all expansion joints and other required areas on all 3 tiers	Sika® Everbuild Hybriflex FR	<ul style="list-style-type: none"> ■ Provides excellent resistance against foot traffic and abrasion ■ Fire rated up to 4 hours ■ No need for dual seal system – less application time
Priming	Sika® Everbuild Sealant Primer P1	<ul style="list-style-type: none"> ■ Primer suitable for use on porous surface before application of Sika Everbuild sealants
Backing rod	Sika® Everbuild Tecnic Joint Backer Rod	<ul style="list-style-type: none"> ■ A non-absorbent, compressible closed cell polyethylene (PE) foam backup material

LONDON STADIUM STRATFORD

THE PROJECT This large football stadium, also known as the London stadium was designed by Populous Architects and constructed to serve as an international sporting event in London in 2012. The 80,000 seat venue was built on a 40 acre site to the southern side of the sports park in Stratford and designed to be converted to a 25,000 seat venue at a later date. From 2016, the stadium has become the new home of West Ham United FC and the National Competition Centre for athletics in the UK.

Sika® Everbuild supplied a joint sealant solution for all expansions joints throughout the stadium.

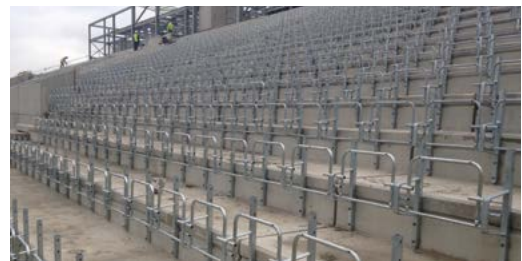


APPLICATION	SIKA EVERBUILD SOLUTIONS	FEATURES AND BENEFITS
Top seal in high traffic areas – seats and risers	Sika® Everbuild Hybriflex SMP	<ul style="list-style-type: none"> ■ Provides excellent resistance against foot traffic and abrasion ■ Movement capability $\pm 25\%$ ■ Outstanding slump resistance on wide vertical joints
Back seal where fire rating required	Sika® Everbuild Fire Sealant 400	<ul style="list-style-type: none"> ■ Fire rated up to 4 hours ■ Excellent acoustic properties ■ Movement capability $\pm 25\%$
Priming	Sika® Everbuild Sealant Primer P1	<ul style="list-style-type: none"> ■ Primer suitable for use on porous surface before application of Sika Everbuild sealants

WELFORD ROAD STADIUM LEICESTER

THE PROJECT A Rugby Union Stadium in Leicester and the home ground for Leicester Tigers with a capacity of 25,849, with a plan to reach 30,000. This particular project was the development of the West Stand (Robin Hood Stand), creating further capacity of 3,100 and will provide Leicester Tigers with new offices, a premium hospitality suite (The Clubhouse) and terrace.

Sika® Everbuild supplied a joint sealant solution for all precast concrete slab joints in the main terracing area.

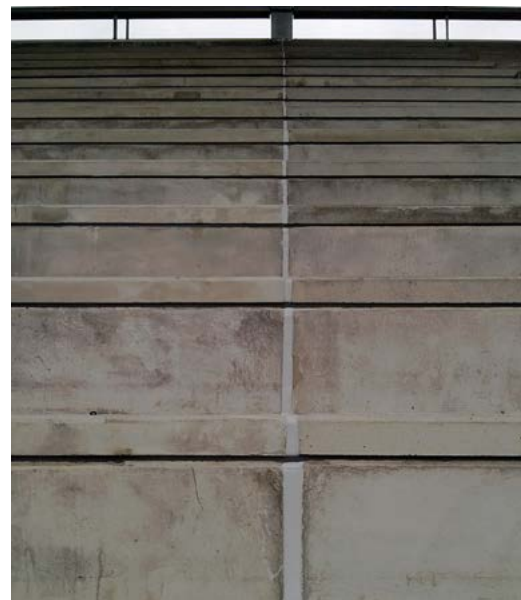


APPLICATION	SIKA EVERBUILD SOLUTIONS	FEATURES AND BENEFITS
Top seal in high foot traffic areas including treads, risers and lower walls	Sika® Everbuild Hybriflex SMP	<ul style="list-style-type: none"> ■ Provides excellent resistance against foot traffic and abrasion ■ Movement capability $\pm 25\%$ ■ Outstanding slump resistance on wide vertical joints
Top seal in non foot traffic areas including behind seats and all vertical expansion joints	Sika® Everbuild 825	<ul style="list-style-type: none"> ■ Low modulus silicone ideal for expansion and connection joints ■ Wide colour range
Filling pre-cast concrete bolt holes	SikaGrout®-212	<ul style="list-style-type: none"> ■ One part, flowable, low shrinkage grout ■ High compressive strength gain

VICARAGE ROAD STADIUM WATFORD

THE PROJECT To provide Watford Football Club supporters with 2,600 new seats by transforming the East stand (now known as the Elton John stand) at Vicarage Road Stadium. The development is centred around the old East stand, constructed back in 1922, which was later shut down on safety grounds back in 2008.

Sika® Everbuild supplied a joint sealant solution for all horizontal and vertical joints.



APPLICATION	SIKA EVERBUILD SOLUTIONS	FEATURES AND BENEFITS
Single seal solution for all vertical expansion butt joints between pre-cast concrete, covering the treds and risers	Sika® Everbuild Hybriflex FR	<ul style="list-style-type: none"> ■ Provides excellent resistance against foot traffic and abrasion ■ Fire rated up to 4 hours ■ No need for dual seal system – less application time
Single seal for all horizontal joints behind the seats	Sika® Everbuild Fire Sealant 400	<ul style="list-style-type: none"> ■ Fire rated up to 4 hours ■ Excellent acoustic properties ■ Movement capability ±25%
Priming	Sika® Everbuild Sealant Primer P1	<ul style="list-style-type: none"> ■ Primer suitable for use on porous surface before application of Sika Everbuild sealants

HALLIWELL JONES STADIUM WARRINGTON

THE PROJECT The Halliwell Jones Stadium is a rugby league stadium in Warrington that is the home ground of Warrington Wolves Rugby League Football Club. In 2011, the club decided to expand the East stand to create a further 2,000 seats by filling the corners with pre-cast concrete.

Sika® Everbuild supplied a sealant which gave the joint a fire rating and a hard surface for foot traffic – no need for dual seal system!



APPLICATION	SIKA EVERBUILD SOLUTIONS	FEATURES AND BENEFITS
Single seal solution for all vertical expansion butt joints between precast concrete, covering the treads and risers, and around the concrete step areas	Sika® Everbuild Hybriflex FR	<ul style="list-style-type: none"> ■ Provides excellent resistance against foot traffic and abrasion ■ Fire rated up to 4 hours ■ No need for dual seal system – less application time
Priming	Sika® Everbuild Sealant Primer P1	<ul style="list-style-type: none"> ■ Primer suitable for use on porous surface before application of Sika Everbuild sealants
Backing rod	Sika® Everbuild Tecnic Joint Backer Rod	<ul style="list-style-type: none"> ■ A non-absorbent, compressible closed cell polyethylene (PE) foam backup material

SIKA FULL RANGE SOLUTIONS FOR CONSTRUCTION:



WATERPROOFING



CONCRETE



REFURBISHMENT



MERCHANT



SEALING AND BONDING



FLOORING



ROOFING



INDUSTRY

FOR MORE INFORMATION:



WHO WE ARE

Sika Limited and Sika Ireland Limited are part of the global Sika Group, specialising in the manufacture and supply of chemical based products. Sika have a leading position in the development and production of systems and products for bonding, sealing, damping, reinforcing, and protecting in the building sector and the motor vehicle industry. Sika has subsidiaries in 93 countries around the world and manufactures in over 170 factories. With approximately 17,000 employees Sika generates annual sales of CHF 5.49 billion (£3.98bn). We are also committed to providing quality, service, safety and environmental care.

In the UK and Ireland, we provide market-leading solutions for concrete, waterproofing, roofing, flooring, refurbishment, sealing & bonding, and industry, and have manufacturing sites in Welwyn Garden City, Preston, Leeds and Dublin with more than 700 employees and a turnover of more than £130 million.

The information, and, in particular, the recommendations relating to the application and end use of Sika® products, are given in good faith based on Sika's current knowledge and experience of the products when properly stored, handled and applied under normal conditions. In practice, the differences in materials, substrates and actual site conditions are such that no warranty in respect of merchantability or of fitness for a particular purpose, nor any liability arising out of any legal relationship whatsoever, can be inferred either from this information, or from any written recommendations, or from any other advice offered. The proprietary rights of third parties must be observed. Please refer to our homepage www.sika.co.uk for our current standard terms & conditions applicable to all orders. Users should always refer to the most recent issue of the Product Data Sheet for the product concerned, copies of which will be supplied on request.



FM 12504



EMS 45308



OHS 585274

SIKA LIMITED

Head Office
Watchmead
Welwyn Garden City
Hertfordshire, AL7 1BQ
United Kingdom

Contact

Phone +44 1707 363893
E-Mail sealants@uk.sika.com
www.sika.co.uk/sealing
www.everbuild-tecnic.co.uk
@SikaLimited

SIKA IRELAND LIMITED

Sika House
Ballymun Industrial Estate
Dublin 11, D11 DA2V
Ireland

Contact

Phone +353 1 862 0709
Fax +353 1 862 0707
E-Mail info@ie.sika.com
www.sika.ie



BUILDING TRUST

