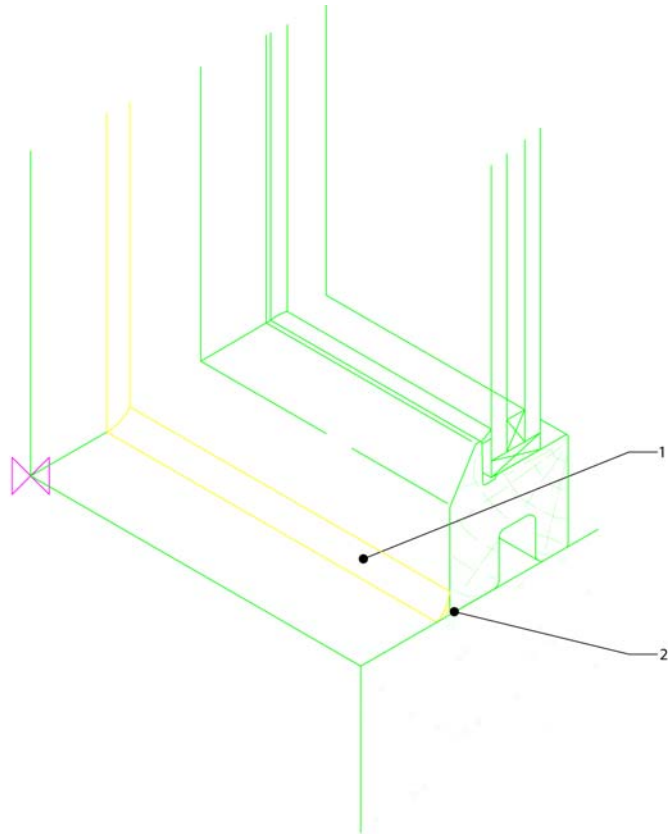


NOTE

CONSULT SIKA TECHNICAL DEPARTMENT IF ADHESION PROMOTING PRIMERS ARE REQUIRED

1. SIKAFLEX AT CONNECTION (ADVANCED TECHNOLOGY SILANE TERMINATED POLYMER BONDING AND SEALING SYSTEM) 20LM/25HM CLASSIFICATION

2. CLOSED CELL POLYETHYLENE BACKING ROD



SIKA LIMITED
SIKAFLEX AT CONNECTION
ADVANCED TECHNOLOGY SILANE TERMINATED POLYMER BONDING AND SEALING SYSTEM
20LM/25HM CLASSIFICATION
SEAL AROUND WINDOW WITH CONCAVE FILLET FINISH
SB017

The information, and, in particular, the recommendations relating to the application and end use of Sika® products, are given in good faith based on Sika's current knowledge and experience of the products when properly stored, handled and applied under normal conditions. In practice, the differences in materials, substrates and actual site conditions are such that no warranty in respect of merchantability or of fitness for a particular purpose, nor any liability arising out of any legal relationship whatsoever, can be inferred either from this information, or from any written recommendations, or from any other advice offered. The proprietary rights of third parties must be observed. All orders are accepted subject to our current terms of sale and delivery. Users should always refer to the most recent issue of the Product Data Sheet for the product concerned, copies of which will be supplied on request.