



HOSPITALS AND HEALTHCARE BUILDINGS SUPPORTING YOU THROUGHOUT YOUR ROOF REFURBISHMENT

BUILDING TRUST



ROOFING EXPERTS - CONSULTATIVE AND COLLABORATIVE APPROACH

Sika has a range of options for the refurbishment and expansion of hospitals and healthcare buildings to fit your requirement and budget. Following initial assessment of your roof, we work alongside our national network of Certified Roofing Contractors to support you with the installation of your chosen solution.

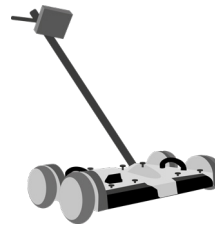
SIKA ROOF REFURBISHMENT SERVICE



Initial Consultation



Roof Survey and Condition Report



Tramex Moisture Mapping



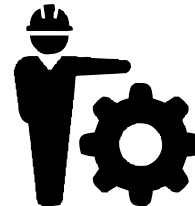
Specification Development



Nationwide Certified Contractors



Dedicated Technical Support



Expert On-site Project Support



Comprehensive Guarantees and Aftercare

FREE ROOF SURVEY AND CONSULTATION

Every project is very important to us. This is why we always arrange an initial consultation to discuss your needs specific to the project before even stepping onto the roof - making sure that everything that is required for the roofing repair, refurbishment or maintenance project has been incorporated and reflected in the scope of works.

During the survey, a core sample will be taken to assess the current roof construction and the condition of the substrate. All of our findings are thoroughly documented with photographs taken by our roofing specialists and used to produce a bespoke condition report and specification.

Other elements of the pre-start survey can include moisture readings, determining the size and dimensions of the roof, and thermographic readings, as well as assessing the existing falls and back falls. Feasibility studies for long term projects are also available on request.

In addition our roofing specialists can also attend pre-start or design meetings at any stage of the project to provide roof design assistance and ensure accurate design work throughout the project.



ROOFING EXPERTS - ADVANCED LEAK INDICATION AND MOISTURE MAPPING

As part of our refurbishment service, we can assess roof condition using Tramex moisture metres. This equipment is ideal for identifying compromised areas of roof build up, leak identification and tracking and moisture mapping.

PERSISTENT ROOF LEAKS AND ISSUES

Using the moisture metres, we can locate specifically where a roof failure is, using its leak identification functionality. This ensures we can specify the correct solution to rectify the problems during the refurbishment of the roof area.



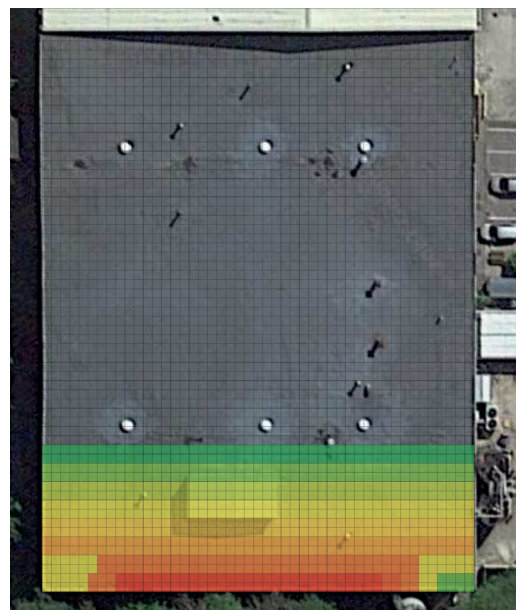
Tramex moisture mapping



Handheld unit for restricted access and detailed areas

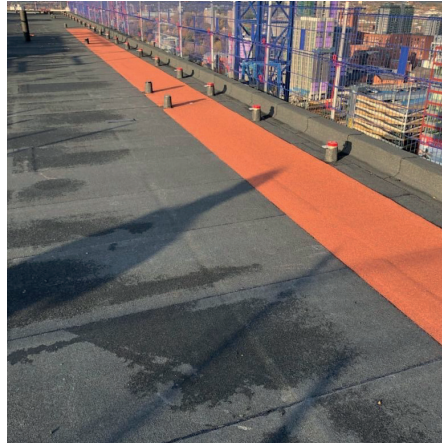
ACCURACY THROUGH MOISTURE MAPPING

For larger roof areas and where existing roof conditions may vary, our moisture mapping software enables us to define areas where removal of the roof system is required. We can identify the extent of what has been compromised with an accurate reading of areas that are wet or dry, which we then build into the roofing specification.



Leak identification software

MINIMUM DISRUPTION SOLUTIONS FIT FOR PURPOSE



ECONOMICAL SOLUTIONS

Following initial consultation, we can help you identify the right solution for your roof refurbishment:

- Repairs - In a situation where your roof requires some repairs to the existing roof surface we have a range of cost effective solutions utilising our range of liquid applied membranes, bituminous membranes and single ply membranes, installed by our Certified Contractors.
- Full roof refurbishment - Following a roof survey, if we have found that there is a requirement for a full roof replacement, we offer a range of services to support your project. These services include, a roof survey and condition report, a specification developed by our technical team, installation by one of our Certified Contractors, project site inspections from our expert applications team and project sign off, guarantees and aftercare.
- Maintenance - We work in conjunction with our Certified Contractors on continuous maintenance of your roof across its serviceable life.

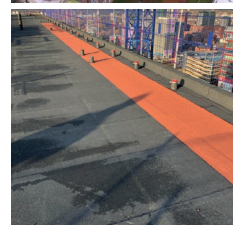
MINIMUM DISRUPTION

We have an extensive range of roofing systems suitable for hospital and healthcare environments:

LOW ODOUR, COLD-APPLIED LIQUID APPLIED MEMBRANES: Through careful engineering and true innovation, Sika has developed Decothane Ultra using patented technology to enable use on highly sensitive sites. These markets have always traditionally been more averse to using liquid applied membranes in case of complaints which could potentially disrupt operations. This ground-breaking product has also been accredited by odournet, an independent body that measures low odour within products.

SAFE2TORCH REINFORCED BITUMINOUS MEMBRANES (RBM): Developed to offer a safe and secure solution for any environment, the SikaBit® Pro Bituminous Membranes range includes detailing materials for completely flame-free Safe2Torch-compliant roof installations. Our proven solution includes all three elements required for a high performance waterproof roof build-up: air and vapour control layer (AVCL), underlay, and cap sheet. Our range also includes insulation, and a root-resistant membrane for green roof applications.

COLD-APPLIED SINGLE PLY MEMBRANE SYSTEMS: Single ply membranes offer real benefits to our customers - improved energy efficiency through thermal upgrading, self-adhered options reducing carbon emissions and whole life cost. A wide variety of system options, ensuring the best solution for each individual application.



ROOF MANAGEMENT - PLANNING FOR THE FUTURE



ROOF MANAGEMENT - HELPING YOU MANAGE YOUR BUDGET

As part of our specification, we can include detailed roof management tools. This is to support you in managing your healthcare project, enabling you to prioritise and direct resources towards roofs that need the highest level of treatment, ensuring the best use of resources on any sized estate, small or large.

In order to provide you with the most accurate, detailed roof plans, our service provides:

- Full site survey
- Assisted expenditure support in line with the traffic light system
- Identification of areas that require immediate focus
- Suggested plan of future works
- Estimate of costs for budget planning purposes
- Post survey review meeting to discuss findings

The roof management plan will then be included in your project specification, helping you to plan for the future.

CASE STUDY: SIKA AT WORK

DECOTHANE IS EFFECTIVE MEDICINE FOR WEST SUFFOLK HOSPITAL ROOF

REQUIREMENT

The phase four programme included seven sections of the building in a 20 week programme. The seven areas that needed work were all under heavy coverage of mechanical plant and pipework, and consequently there were large areas of restricted access, these issues made Sika the perfect choice for the project.

SIKA SOLUTION

Sika's technical team carried out a full condition survey to help inform the technical specification and input into a full solution that addresses the issues with standing water, brings the building up to current Part L building regulations and offers a robust, long-term waterproofing solution.

Core samples were taken on each roof area where possible. Where this was not possible due to standing water, the team used their expertise of the substrate to develop the technical specification.

The resulting proposal included making good the existing asphalt on all roof areas within the project scope and raising the perimeter details to accommodate the level of the new insulation. Sika proposed a warm roof specification with tapered Decotherm insulation along with Decothane Delta 25 & Ultra 25 cold-applied liquid membrane. Because of the nature of the project it was

essential that the work was low-odour especially in areas of the hospital where patients were more receptive to odours, such as in the maternity ward. Following this Decothane Delta 25 or Ultra 25 membrane were applied in the respective areas.



DISRUPTION FREE SOLUTION FOR HAREFIELD HOSPITAL

REQUIREMENT

The existing asphalt roof had begun to show signs of blistering and slumping, which needed to be addressed to prevent failure, and the insulation required an upgrade to conform with the changes in the Building Regulation Part L.

SIKA SOLUTION

Sika Sarnafil single ply membranes provided the solution. The existing concrete deck, with thin insulation and asphalt waterproofing was overlaid with Sikatherm Insulation bonded to the existing covering using Sarnacol 2162. Sarnafil G410-12EL single ply membrane was then adhered to the insulation using Sarnacol 2170. This ensured that there were no naked flames or hot works.

The critical areas over the operating theatre and intensive care unit encountered no disruption, nor did they experience any water ingress due to the fact that the existing roofing covering was left intact.

There was also no noise from mechanically fixing into the concrete deck. Sika provided advice and produced detailed drawings to the client and contractor on every aspect of the works.



TAILORED SOLUTIONS FOR ALL YOUR HEALTHCARE NEEDS



ROOFING SOLUTIONS



CONCRETE (NEW BUILD)



CONCRETE REPAIR
(REFURBISHMENT)



RENDERS AND WALL
FINISHES (EXTERNAL)



FAÇADES



RAIN SCREEN
SOLUTIONS AND JOINT
SEALING



MODULAR/OFFSITE

Every part of the building envelope, from the roof and the external façade walls to the basement, can be vulnerable to water ingress, reduced indoor air quality and hygiene levels, however water will always remain the biggest risk to buildings. Therefore these facilities need a high performance “envelope” that provides secure and unyielding protection from the elements.

Sika produces a wide range of quality products and systems that can waterproof and protect, seal, bond, strengthen, reinforce, and when necessary, repair every part of the building envelope. Sika building envelope technologies simultaneously promote functionality, enhance the appearance, and extend the service life of buildings.

“Sika understands the specific requirements of health-care facilities and can offer tailored solutions and expertise for all areas, ensuring a comfortable and hygienic environment for both patients and staff.”

SIKA FULL RANGE SOLUTIONS FOR CONSTRUCTION:



LIQUID APPLIED ROOFING



SINGLE PLY ROOFING



BITUMINOUS ROOFING



CONCRETE



CONCRETE REPAIR



STRUCTURAL STRENGTHENING



BUILDING FINISHING



WATERPROOFING



JOINT SEALING



FAÇADES



FLOORING



INDUSTRY



DISTRIBUTION



BUILDING TRUST

FOR MORE INFORMATION:



WHO WE ARE

Sika Limited and Sika Ireland Limited are part of the global Sika Group, specialising in the manufacture and supply of chemical based products. Sika has a leading position in the development and production of systems and products for bonding, sealing, damping, reinforcing, and protecting in the building sector and the motor vehicle industry. Sika has subsidiaries in 100 countries around the world and manufactures in over 300 factories. With more than 25,000 employees Sika generates annual sales of CHF 7.9 billion (£6.14 bn). We are also committed to providing quality, service, safety and environmental care.

In the UK and Ireland, we provide market-leading solutions for concrete, waterproofing, roofing, flooring, refurbishment, sealing & bonding, and industry, and have manufacturing sites in Welwyn Garden City, Preston, Leeds, Wishaw and Dublin with more than 920 employees and a turnover of more than £290 million.

The information, and, in particular, the recommendations relating to the application and end use of Sika® products, are given in good faith based on Sika's current knowledge and experience of the products when properly stored, handled and applied under normal conditions. In practice, the differences in materials, substrates and actual site conditions are such that no warranty in respect of merchantability or of fitness for a particular purpose, nor any liability arising out of any legal relationship whatsoever, can be inferred either from this information, or from any written recommendations, or from any other advice offered. The proprietary rights of third parties must be observed. Please refer to our homepage www.sika.co.uk for our current standard terms & conditions applicable to all orders. Users should always refer to the most recent issue of the Product Data Sheet for the product concerned, copies of which will be supplied on request.



SIKA LIMITED

Head Office
Watchmead
Welwyn Garden City
Hertfordshire, AL7 1BQ
United Kingdom

Contact

Phone +44 1 707 394444
Fax +44 1 707 329129
E-Mail enquiries@uk.sika.com
www.sika.co.uk
@SikaLimited

SIKA IRELAND LIMITED

Sika House
Ballymun Industrial Estate
Dublin 11
D11 DA2V
Ireland

Contact

Phone +353 1 862 0709
Fax +353 1 862 0707
E-Mail info@ie.sika.com
www.sika.ie
@Sikalreland

BUILDING TRUST

