



METHOD STATEMENT

Sika Pump Pro Plus, Sika Pump Pro XL & Sika Pump Pro BBPS

07.03.2019 / VO2 / SIKA UK / ALEX BURMAN

TABLE OF CONTENTS

1	Product Summary	3
1.1	Sika Pump Pro Plus	3
1.2	Sika Pump PRO XL	3
1.3	Sika Pump Pro BBPS	3
2	Installation Guidelines	4
2.1	Electrical Connection	8
2.2	Battery Back-Up Pump System	8
2.3	Aquasafe alarm	10
3	Technical Specifications	10
3.1	Pump Data	10
3.2	AquaSafe Alarm	10
4	Dimensions	11
4.1	Tanks	11
4.2	Battery Back-Up Panel	11
4.3	AquaSafe Alarm Panel	11
5	Parts List	11
5.1	Sika Pump Pro Plus and Sika Pump Pro BBPS	11
5.2	Battery Back-Up Pump System	11
5.3	AquaSafe alarm	12
6	Wiring Diagrams	12
7	Transport	13
8	Maintenance	13
9	Health and Safety	13
9.1	Safety Precautions	13
9.2	Electrical Connections	14
9.3	Earthing	14
10	Service Agreement	15
11	Attachments	17
12	Legal Note	17

Method Statement

Sika Pump Pro Plus, Sika Pump Pro XL & Sika Pump Pro BBPS
07.03.2019, VO2

1 PRODUCT SUMMARY

1.1 SIKA PUMP PRO PLUS

The Sika Pump Pro Plus is specially designed for the removal of groundwater from basement cavity drainage membrane systems. The system comprises of a polyethylene tank, locking access cover (pedestrian duty, not suitable for roadways) and two powerful submersible pumps. The system is very versatile, enabling the installer to locate inlets to their specifications.

The system comes complete with the AquaSafe Alarm panel, which is designed to alerts the end user when there is:

- A power failure to the AquaSafe Alarm
- A high level situation in the chamber/sump
- A high level situation recorded
- A service due

There is a battery incorporated within the panel to power itself in case of mains power failure. The system is designed to activate via a float switch, which is located inside the chamber, it is set to activate higher than the activation point of the primary pump.

1.2 SIKA PUMP PRO XL

The Sika Pump Pro XL is the same as the Sika Pump Pro Plus, but designed for larger head of water. It therefore includes larger pumps and a larger tank.

The system comes complete with the AquaSafe Alarm panel, which is designed to alerts the end user when there is:

- A power failure to the AquaSafe Alarm
- A high level situation in the chamber/sump
- A high level situation recorded
- A service due

There is a battery incorporated within the panel to power itself in case of mains power failure. The system is designed to activate via a float switch, which is located inside the chamber, it is set to activate higher than the activation point of the primary pump.

1.3 SIKA PUMP PRO BBPS

The Sika Pump Pro BBPS is specially designed for the removal of groundwater from basement cavity drainage membrane systems. The system comprises of a polyethylene tank, locking access cover (pedestrian duty, not suitable for roadways), powerful submersible pump and 24V backup pump. The system is very versatile, enabling the installer to locate inlets to their specifications.

The system comes complete with a battery back-up pump system, which is designed especially for where the possibility of primary pump failure through either a pump fault or loss of mains power would be catastrophic. The system acts as a back-up that will alert the end user if the water rises above the normal operating level within the tank and will activate a 24V back-up pump. The system is designed to activate via three separate float switches. The panel contains two batteries that are trickle charged that will keep the back-up system operational in situations of mains power failure and/or pump fault (please refer to section 3.2 'Battery Back-Up Pump System' for details of

Method Statement

Sika Pump Pro Plus, Sika Pump Pro XL & Sika Pump Pro BBPS
07.03.2019, VO2

battery life).

2 INSTALLATION GUIDELINES

It is important to note that these instructions are for guidance only and it is the contractor's responsibility to satisfy themselves that the installation procedure is in accordance with the site conditions and good building practice, to eliminate any potential damage to the system either during or after installation. The installer should also satisfy themselves that the system can be installed in conjunction with these guidelines, prior to work commencing.

The tank is manufactured from polyethylene and as such is extremely robust. However, as with any preformed tank they are susceptible to floatation and hydrostatic pressures exerted in high water table conditions therefore must always be fully supported by a concrete base and surround. The tank is only suitable for installation to a maximum of 300mm deeper than supplied from finished floor level.

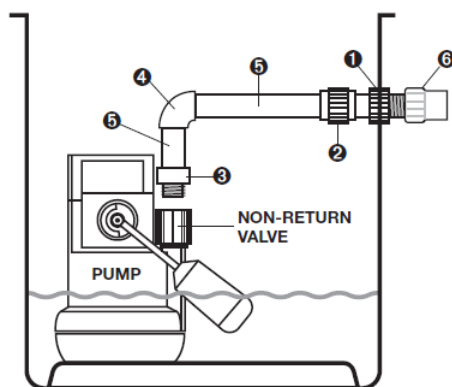
Please read these instructions in full prior to commencement of the installation. If you are unsure on any point then please ask for advice before proceeding. Technical support is available from Edincare Pumps on 01442 211554 from 8:30am – 5:30pm, Monday to Friday.

Sika Pump Pro Plus and Sika Pump Pro XL (Twin Pump Configuration 'Twin Discharge')

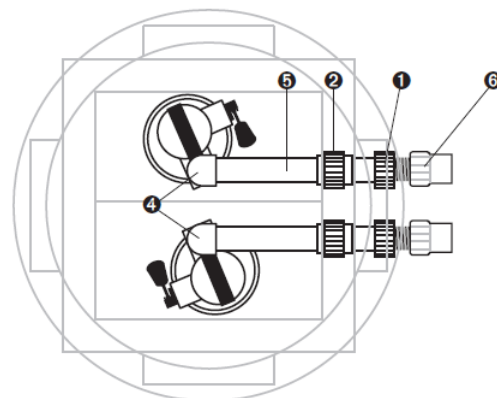
Fittings kit comes with the following as standard:

No.	Qty	Description
1	2	PVC 1 ¼" Tank Connector
2	2	PVC 1 ¼" Socket Union
3	2	PVC 1 ¼" Male Threaded Adaptor
4	2	PVC 1 ¼" Elbow
5	2	PVC 1 ¼" Class E Pressure Pipe 0.5 metres
6	2	32mm Female Threaded Adaptor

SIDE ELEVATION



PLAN VIEW



First select a suitable location for the pumps ensuring that 1no. pump is positioned on the base of the tank and 1no. pump is positioned on the raised section. It is also essential to position the pumps so the float arms are not obstructed by for

Method Statement

Sika Pump Pro Plus, Sika Pump Pro XL & Sika Pump Pro BBPS
07.03.2019, VO2

example the tank wall, inlets etc., at their optimum reach (see diagram above). Remove the nut located in the pump switch and push the float arm into place ensuring that the nut is securely replaced. Prior to installing the internal pipe work please check the Non-Return Valves are securely fixed to the pump outlets and ensure that the flap opens in the direction of the flow.

- a) Screw the Male Threaded Adaptors (3) into the Non-Return Valves located on the pump outlets.
- b) With the pumps roughly in position cut a short length of 1 ¼" PVC pipe (5) and place into the Male Threaded Adaptor (3) of the pump on the raised section. Check the height is approximately at the level of the discharge (do not glue into place yet). With the other pump on the base of the tank, measure from the inner lip of the Male Threaded Adaptor (3) to the top of the 1 ¼" PVC pipe in position on the raised section. Cut a length of 1 ¼" PVC pipe to size and place in to the Male Threaded Adaptor (3) of the pump on the base of the tank ensuring that both lengths of 1 ¼" PVC Pipe (5) are the same height.
- c) Place the Elbows (4) onto the short lengths of pipe (5) and check the height at which the pipe work will leave the tank and mark it where the Tank Connectors (1) are to be connected (do not glue the Elbows (4) into place yet). For ease of installation please ensure to leave enough space between the Tank Connectors and they are positioned at a level height.
- d) Drill 2no. 1 ¼" (44mm) holes where you have marked the tank and fix the Tank Connectors (1) in place with the threaded part external to the tank.
- e) Place the Socket Unions (2) over the plain end of the Tank Connectors (1) (internal within the tank) and position the pumps so that there is room for the float switches to activate.
- f) Now measure the lengths of PVC pipe (5) required between the Elbows (4) and the Socket Unions (2) and cut to size.
- g) Check all the pipe work is in place correctly and glue together with plenty of PVC Solvent Cement

For connection of the external pipe work you will be left with a 1 ¼" male thread on the outside of the tank, we recommend that you use 1 ¼" Class E PVC Pressure Pipe but should the installer wish to use 32mm Solvent Weld Waste Pipe (white) then a 32mm Female Threaded Adaptor (6) is supplied within the fittings kit which should be threaded onto the male thread on the outside of the tank.

Sika Pump Pro BBPS (BBPS Pump Configuration 'BBPS Discharge')

Fittings kit comes with the following as standard:

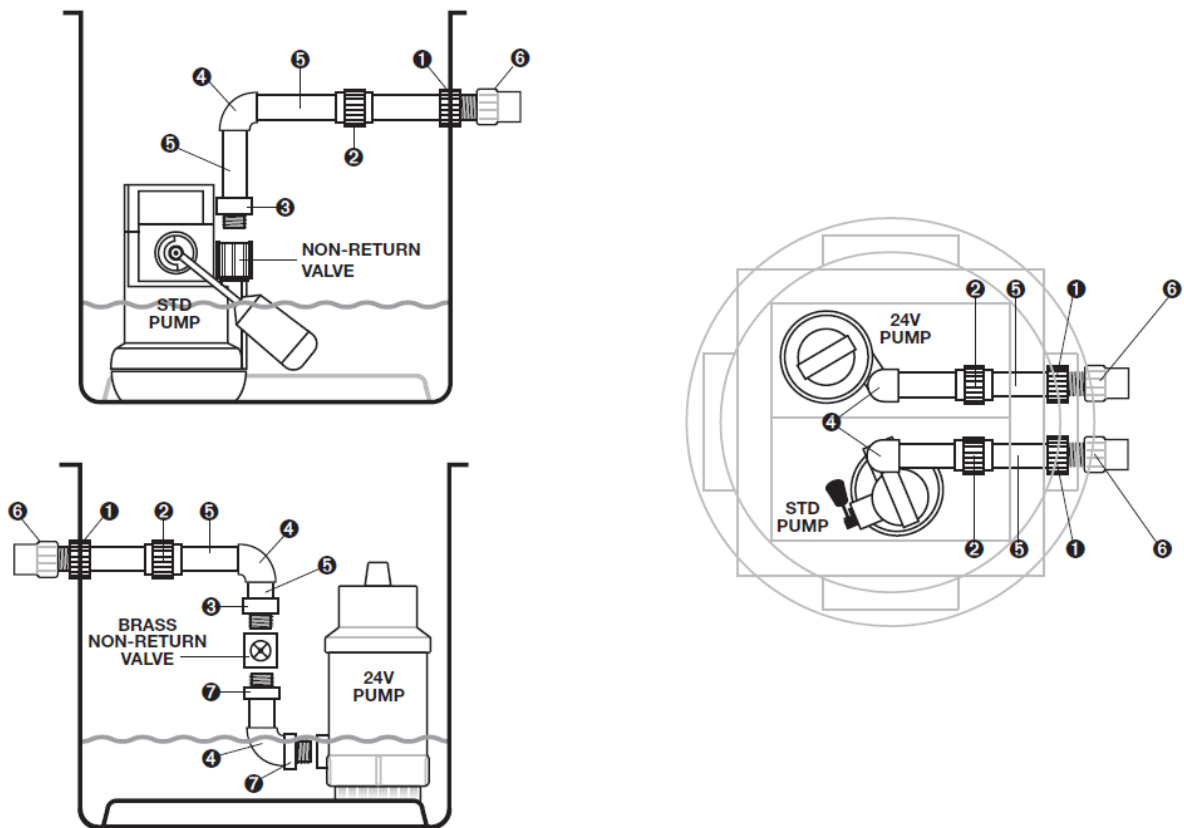
No.	Qty	Description
1	2	PVC 1 ¼" Tank Connector
2	2	PVC 1 ¼" Socket Union
3	2	PVC 1 ¼" Male Threaded Adaptor
4	3	PVC 1 ¼" Elbow
5	2	PVC 1 ¼" Class E Pressure Pipe 0.5 metres
6	2	32mm Female Threaded Adaptor
7	3	PVC 1 ¼" Pl/Th Barrel Nipple

SIDE ELEVATION

PLAN VIEW

Method Statement

Sika Pump Pro Plus, Sika Pump Pro XL & Sika Pump Pro BBPS
07.03.2019, VO2



Primary pump pipe work guidelines

First position the Primary pump on the base of the tank ensuring that the float arm is not obstructed by for example the tank wall, inlets etc., at its optimum reach. Remove the nut located in the pump switch and push the float arm into place ensuring that the nut is securely replaced. Prior to installing the internal pipe work please check the Non-Return Valve is securely fixed to the pump outlet and ensure that the flap opens in the direction of the flow.

- Screw the Male Threaded Adaptor (3) into the Non-Return Valve located on the pump outlet.
- Cut a short length of 1 ¼" PVC pipe (5) and place into the Male Threaded Adaptor (3) (do not glue into place yet).
- Place the Elbow (4) onto the short length of pipe (5) and check the height at which the pipe work will leave the tank and mark it where the Tank Connector (1) is to be connected (do not glue the Elbow (4) into place yet). Please note that the pump is to be located on the step.
- Drill a 1 ¼" (44mm) hole where you have marked the tank and fix the Tank Connector (1) in place with the threaded part external to the tank.
- Place the Socket Union (2) over the plain end of the Tank Connector (1) (internal within the tank) and position the pump so that there is room for the float switch to activate.
- Now measure the length of PVC pipe (5) required between the Elbow (4) and the Socket Union (2) and cut to size.
- Check all the pipe work is in place correctly and glue together with plenty of PVC Solvent Cement.

Method Statement

Sika Pump Pro Plus, Sika Pump Pro XL & Sika Pump Pro BBPS
07.03.2019, VO2

BBPS Pipe work Guidelines

- a) Screw 1no. 1 ¼" Pl/Th Barrel Nipple (7) into the 24v Pump and then place the 1 ¼" PVC Elbow (4) over the Barrel Nipple with the Elbow pointing directly upwards.
- b) Now take the 1 ¼" Brass Non-return Valve and note the arrow on the side pointing in the direction of the flow. Screw a 1 ¼" PVC Pl/Th Barrel Nipple (7) into the bottom of the Valve and 1no. 1 ¼" PVC Male Th. Adaptor (3) into the top of the Valve.
- c) Place the Valve into the 1 ¼" PVC Elbow positioned on the pump and position the 24v Pump on the base of the tank. Measure from the inner lip of the Male Threaded Adaptor (3) to the top of the 1 ¼" PVC pipe on the Primary pump. Cut a length of 1 ¼" PVC pipe to size and place in to the Male Threaded Adaptor (3) of the pump on the base of the tank ensuring that both lengths of 1 ¼" PVC Pipe (5) are the same height. Place the Elbow (4) onto the short length of pipe (5) and check the height at which the pipe work will leave the tank and mark it where the Tank Connector (1) is to be connected (do not glue the Elbow (4) into place yet). Please note that the pump is to be located on the step.
- d) Drill a 1 ¼" (44mm) hole where you have marked the tank and fix the Tank Connector (1) in place with the threaded part external to the tank.
- e) Place the Socket Union (2) over the plain end of the Tank Connector (1) (internal within the tank) and position the pump so that there is room for the float switch to activate.
- f) Now measure the length of PVC pipe (5) required between the Elbow (4) and the Socket Union (2) and cut to size.
- g) Check all the pipe work is in place correctly and glue together with plenty of PVC Solvent Cement.

For connection of the external pipe work you will be left with a 1 ¼" male thread on the outside of the tank, we recommend that you use 1 ¼" Class E PVC Pressure Pipe but should the installer wish to use 32mm Solvent Weld Waste Pipe (white) then a 32mm Female Threaded Adaptor (6) is supplied within the fittings kit which should be threaded onto the male thread on the outside of the tank.

1. Select a suitable location for the pumping station. It is extremely important to site the system with permanent access in mind for routine maintenance of the system.
2. Prepare the tank for all connection, incoming pipe/s (inlets and cable duct). To do this you must select the location and drill the appropriate sized inlet suitable for your incoming pipe/s (fitting not supplied as standard, see section '6.0 Accessories' for inlet rubber seals).
3. A reinforced waterproof concrete sump must be formed for the tank to be installed within. This will ensure that any pressure present is not transferred onto the tank itself. Furthermore, when constructing the reinforced waterproof concrete sump it is important that adequate space is made for connections to the tank e.g. inlet/s, cable ducts and discharge. Consideration must also be made regarding the depth and orientation of all connections to ensure that they line up with the tank. It is imperative that you consult with a structural and waterproofing engineer when designing the reinforced waterproof concrete sump ensuring that it allows for the anticipated pressures and that they are not transferred onto the tank.
4. In all instances, the tank MUST be positioned on a flat, level, concrete base of dimensions sufficient to fully support the base of the tank. Once the reinforced waterproof concrete sump has been formed, lay a 100mm mass concrete within your reinforced waterproof concrete sump, carefully position the tank onto the WET concrete base ensuring that no loose debris is inadvertently knocked onto the base, under the tank during this procedure. Push the tank into the wet concrete ensuring that the concrete is fully imbedded into the bottom of the tank. Position it such that the inlet/s, cable duct and discharge pipe work are correctly aligned.
5. Once the tank is positioned, connect all pipes (inlet/s, cable duct and discharge) to the tank.
6. Whilst the concrete base is still WET backfill the tank with a mass concrete. The concrete must be evenly poured around the tank ensuring that no voids are left within the concrete. Care must be taken to ensure that any pipes (or other connections) made, are not damaged. During the concrete pour, ensure that the tank is vertical (by use of a spirit level across the tank's opening). The tank MUST be ballasted with water at the same rate as backfilling such that the level difference between the water and the backfill does not exceed 150mm at any time. Please ensure that when pouring the concrete backfill, suitable steps are taken to prevent the concrete entering the tank and any connected pipework.

Method Statement

Sika Pump Pro Plus, Sika Pump Pro XL & Sika Pump Pro BBPS
07.03.2019, VO2

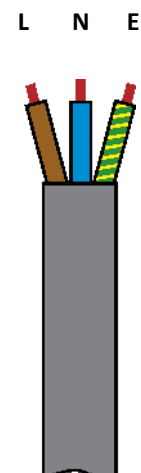
7. The system is supplied with an access cover, this is loose and should sit directly above the top of the tank access shaft. Please note that the tank is only suitable for installation to a maximum of 300mm deeper than supplied from finished floor level.
8. Please note that the ballast water inside the tank should not be removed until the backfill has fully cured.
9. It is recommended that an external 1 ¼" gate valve (see section 6.0 Accessories') be installed on the discharge line (above slab level) should the vertical lift exceed 3 meters and/or the discharge line be connected to a foul water outlet.
10. It is extremely important that once the tank has been installed, before the pumps are installed, the system is flushed through and all sand, silt, rubble and general debris removed from the tank. FAILURE TO DO THIS WILL INVALIDATE THE WARRANTY ON THE PUMPS.
11. Install the pumps and float switch and draw these cables through the cable duct back to the control equipment/electrical supply via a 50mm rubber fitting (fitting not supplied as standard, see section 6.0 Accessories).
12. Commission the pumping station. A commissioning service is available by Edincare Pumps, simply contact us on 01442 211554 for further information.

2.1 ELECTRICAL CONNECTION

A qualified person in accordance with the Institute of Electrical Engineers Regulations should connect the Pump/s and controls to the mains supply taking into account all the electrical information provided.

1. Each device (as defined above) should be connected to its own 230V unswitched fused spur. Fuse to be suitably sized based on the electrical specifications as detailed under Technical Specification (see section 3).
2. Each unswitched fused spur to be powered from its own dedicated breaker within the distribution board.
3. Ensure that the appropriate breaker within the distribution board is clearly marked for isolation of the connected device.
4. Please ensure that there is suitable slack on the cable to allow for the pump/s to be removed for maintenance.
5. This work should be entrusted to a qualified electrician in accordance with the latest IET wiring regulations BS7671.
6. Keep the connection isolated until you are ready to test the system.

L Live (Brown)
 N Neutral (Blue)
 E Earth (Green/Yellow)



2.2 BATTERY BACK-UP PUMP SYSTEM

2.2.1 Electrical Connections

A qualified person in accordance with the Institute of Electrical Engineers Regulations should connect the unit to the mains supply taking into account all the electrical information provided.

Method Statement
 Sika Pump Pro Plus, Sika Pump Pro XL & Sika Pump Pro BBPS
 07.03.2019, VO2

1. Select a suitable location for the control panel, taking into account that the panel must be located within 5m of the pump. It is important to bear in mind access to the control panel for maintenance purposes, ensuring it is located in a dry area and the audio alarm is audible to the end user.
2. Mount the panel to a wall or backboard using the mounting points at the back of the panel and appropriate screws and wall plugs (not supplied).
3. The three float switches need to be fixed to the metal bracket using the fittings provided (plastic washer and nut). Place the float switches into position ensuring that the activation arm is down and fixed into position using the plastic washer and nut.

The float switches should be located within the tank ensuring that the following configuration is adhered to:

'Run' Float	Top of bracket
'High Level Alarm'	Float Middle of bracket (float is to be higher than the primary pump float switch).
'Off'	Float Bottom of bracket

4. The electrical/float cables should be drawn through the cable duct back to the control panel.
5. The panel should be connected to a 230V 13A fused spur.
6. For connection to the mains supply it is imperative that the panel is connected to a separate fused spur to that of the primary pump. This is because should a fault occur with the pump and blow its fuse, then the back-up system can still operate.
7. Please ensure that there is suitable slack on the cable to allow for the pump to be removed for maintenance.
8. To commission the control panel you must connect both the batteries using the connectors provided, a red indicator on the battery charger will inform you that the batteries are now charging, and once fully charged the red indicator will turn green. To test the system, disconnect power from the primary pump and fill the tank with water until the back-up pump activates. Please note that prior to the back-up pump activating the high level alarm should sound.

2.2.2 Control Panel Operation

The most important element of the battery back-up system is the control panel as it controls and monitors and status of the complete system.

The panel consists of both visual and audio indicators that are imperative for both the installer and end user to fully understand.

Visual Indicators

White Indicator (Supply On)	This indicates whether there is a mains supply connected to the unit. Should the mains supply be removed (i.e. Power failure, blown fuse) the light will go out.
Red Indicator (Fault)	This indicates whether there is a fault with the back-up pump, such as a blockage, blown fuse or that the batteries have run dry.
Green Indicator (Running)	This indicates that the back-up pump is in operation.

Audio Indicators

Method Statement

Sika Pump Pro Plus, Sika Pump Pro XL & Sika Pump Pro BBPS
07.03.2019, VO2

The battery back-up system comes complete with an audio alarm to alert the user when there is a high level situation within the tank. Also located on the front of the panel is an alarm mute button to silence the alarm in a high level situation.

2.3 AQUASAFE ALARM

Please refer to the AquaSafe Alarm Installation & Operating Guidelines.

3 TECHNICAL SPECIFICATIONS

3.1 PUMP DATA

Model	Sika Pump Pro BBPS (Main)	Sika Pump Pro BBPS (Backup)	Sika Pump Pro Plus	Sika Pump Pro XL
Power Supply	230V AC	230V AC	230V AC	230V AC
Rated Current	1.9A	13A	1.9A per pump	4.9A per pump
Motor Rating	180W	280W	180W per pump	500W per pump
Frequency	50Hz	50Hz	50Hz per pump	50Hz per pump
Revolutions Per Min.	2800rpm	2800rpm	2800rpm per pump	2800rpm per pump
Max Vertical Output	6.8m	6m	6.8m	12.5m
Max Flow Rate	174l/m	150l/m	174l/m	234l/m
Max Liquid Temp.	<40°C	<40°C	<40°C	<40°C
Discharge Size	1 ¼" / 32mm	1 ¼" / 32mm	2 x 1 ¼" / 32mm	2 x 1 ¼" / 32mm
Cable Length	5m	3m	5m	5m
Weight	5.2kg	4.8kg	5.2kg	6.9kg
Colour	Yellow	Black	Yellow	Yellow

3.2 AQUASAFE ALARM

The system conforms to:

- The Low Voltage Directive, EN61010:2010
- The EMC Directive EN55014:2006, A1 and EN55014-2:2015

Power Supply	230V AC 50hZ
Rated Power	<10VA
Internal Battery	6V, 1.3AH
Sound Alarm Level	85dB
Main Power Cable Length	1m
Weight	0.5kg
Material	ABS
Colour	Grey
Operating Temperature	-10°C to +40°C

Method Statement

Sika Pump Pro Plus, Sika Pump Pro XL & Sika Pump Pro BBPS
07.03.2019, VO2

4 DIMENSIONS

4.1 TANKS

	Sika Pump Pro BBPS Sika Pump Pro Plus	Sika Pump Pro XL
Diameter	600mm	750mm
Height	600mm	1000mm

4.2 BATTERY BACK-UP PANEL

Height	380mm
Width	300mm
Depth	180mm

4.3 AQUASAFE ALARM PANEL

Height	122mm
Width	124mm
Depth	85mm

5 PARTS LIST

5.1 SIKA PUMP PRO PLUS AND SIKA PUMP PRO BBPS

Product Name	Sika Pump Pro BBPS (Qty)	Sika Pump Pro Plus (Qty)	Sika Pump Pro XL
Tank	1	1	1
Access Cover, Locking, Solid Top (Pedestrian Duty)	1 (350 x 350mm)	1 (350 x 350mm)	1 (450 x 450mm)
Pump (240V)	1	2	2
Float Arm for Pump	1	2	2
Fittings Kit (Pipe work/Fittings)	1	1	1
Non-return Valve (integral)	1	2	2

5.2 BATTERY BACK-UP PUMP SYSTEM

Qty	Product Name
3	Mini Float Switch
1	Control Panel
1	Non-return valve (Brass)
1	24V Back-Up Pump

Method Statement

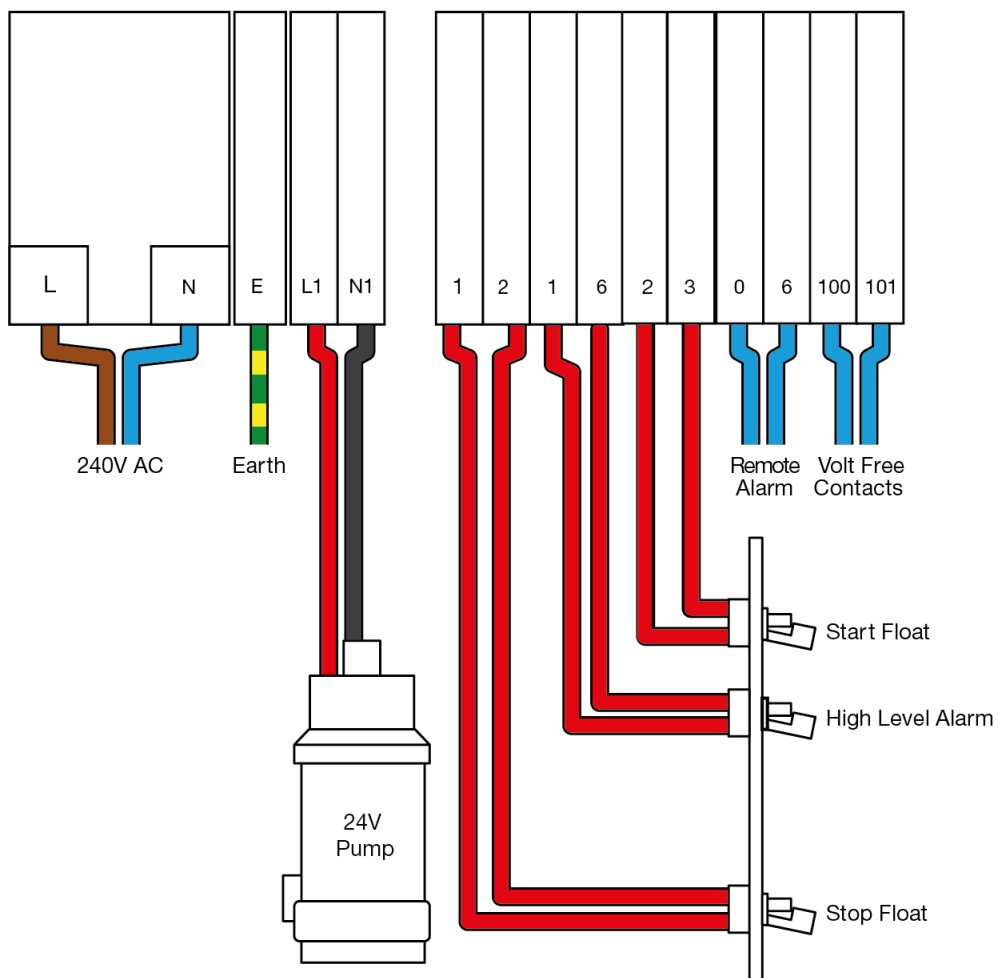
Sika Pump Pro Plus, Sika Pump Pro XL & Sika Pump Pro BBPS
07.03.2019, VO2

5.3 AQUASAFE ALARM

Qty	Part Number	Product Name
1	19013	AquaSafe Alarm Panel
3	14075	16mm Black Gland
1	14035	20mm Black Gland
1	23020	Float Switch Mini
1	N/A	Installation & Operating Guide

6 WIRING DIAGRAMS

Please find below the wiring diagram for the 24V battery back-up system.



Should you require further assistance please contact Edincare Pumps technical helpdesk on 01442 211554 from 8:30am – 5:30pm, Monday to Friday.

Method Statement
 Sika Pump Pro Plus, Sika Pump Pro XL & Sika Pump Pro BBPS
 07.03.2019, VO2

7 TRANSPORT

The pump/s are shipped disconnected from the pipe work and fittings to avoid damaged in transit. Carefully unpack the system from its packaging and inspect for any signs of damage. Should there be any damage present it must be reported immediately (no claim will be considered after 24 hours from time of delivery).

8 MAINTENANCE

The system requires minimal maintenance; however it is strongly recommended that the unit is serviced quarterly during the first year. It is essential that the unit is serviced at least annually thereafter.

To clean out the unit you must first turn off the power supply and ensure that it cannot be inadvertently turned back on. (i.e. remove the fuse/s). Now remove the access cover to gain access to the pump/s. Next you must remove the pump/s from the tank by disconnecting the pipe work and lifting the pump/s out. It is advisable to check the underside of the pump/s to ensure there is no build up of debris around the pump/s and the float switch/es as this can often lead to poor pump performance or damage to the pump/s.

You must also clean out the tank ensuring that there is no debris in the bottom of the tank. Now that the tank is clean you must reconnect the pump/s to the pipe work and check the function of the pump/s prior to replacing the access cover.

It is advised that the operation of the battery back-up system is checked every 6 months; this can be done by removing the power supply to the primary pump/s and allowing the tank to fill with water until the back-up pump activates. It is also advised that every 6 months the system is allowed to operate using only the back-up pump, this is to allow the batteries to run down and fully recharge which in turn will help to extend the life of the batteries.

Please note that we recommend that the batteries be replaced every 2 years.

In addition we strongly recommend that a service agreement be taken out, please refer to section 11 for further information.

9 HEALTH AND SAFETY

Please pay attention to the following regulations when installing the pump system or ask your qualified electrician/distributor.

9.1 SAFETY PRECAUTIONS

In order to minimise the risk of accidents in connection with the service and installation work, the following rules should be followed.

- Do not ignore health hazards. Observe strict cleanliness.
- Bear in mind the risk of electrical accidents
- Use a safety helmet, safety goggles and protective shoes.
- All personnel who work with sewage systems must be vaccinated against diseases to which they may be exposed.
- A first aid kit must be close to hand.
- Note that special rules apply to installations in an explosive atmosphere.

9.2 ELECTRICAL CONNECTIONS

- The following works should only be done by qualified and authorised electricians.
- Edincare and Sika Ltd disclaim all responsibility for work done by untrained and/or unauthorized personnel.
- Heed operating voltage (see name plate and additional labels).
- Take out the main fuses to isolate the mains supply from the control unit before repairs or any other works and ensure it cannot be energized again.
- As the pump is equipped with an automatic level control, there is a risk of sudden restart.
- Before starting check the efficiency of the protective arrangements of the pump and the monitoring equipment. Failure to heed this warning may cause a lethal accident.
- Do not put the lead ends into water! Irruption of water may cause malfunctions.
- If persons are likely to come into physical contact with the pump or pumped media, the earthed (grounded) socket must have an additional connection to an earth (ground) fault protection device (GFI).
- Use the pump only in accordance to the date stated on the pump's plate.
- Connection only to mains supply installed in accordance to the local regulations. For fusing of D.O.L. starting pumps use only appropriate slow fuses or automatic circuit breakers with D characteristics. This is because the motor's nominal voltage is measured at the terminal board of the pump; please consider the voltage drop of long supply cables.
- Replace the cable if the cable jacket is damaged. Do not pinch the cable or pull it around sharp bends.
- Always install the control unit in a dry and well ventilated room. Never install the control unit within the tank.

9.3 EARTHING

For safety reasons, the earth conductor should be approximately 50mm (2") longer than the phase conductors. If the motor cable is jerked loose by mistake, the earth conductor should be the last conductor to come loose from the first terminal. This applies to both ends of the cable. Ensure the correct earthing of the pump and control unit.

Method Statement

Sika Pump Pro Plus, Sika Pump Pro XL & Sika Pump Pro BBPS
07.03.2019, VO2

10 SERVICE AGREEMENT

All systems are manufactured to the highest standard and we have every confidence the product will serve you well. However as with most appliances of this nature, regular maintenance is essential in ensuring your system operates at its optimum level and fulfils the expected life span.

A Service Agreement scheme is available at competitive prices, and will undertake to service equipment at regular intervals. You will be supplied with a full report on the work done and the condition of the pump/s and all related equipment each time the engineers attend site.

You can see significant benefits through:

- Reduced running costs including energy and maintenance
- Greater life expectancy for equipment
- Reduced risk of breakdown with its resultant problems and inconvenience
- Better plant utilisation
- Improved environmental conditions

The Service Agreements consist of the following:

- Scheduled service visits per year
- Reduced hourly charges for un-scheduled call outs
- Fully trained service engineers

Please find attached the service documentation, comprising of a Service Agreement, Equipment Schedule and Work Schedule. Simply complete the enclosed documentation and return to:

Edincare Pumped Drainage Systems

Unit 8, Heron Business Park,

Eastman Way,

Hemel Hempstead,

Hertfordshire

HP2 7FW

Method Statement

Sika Pump Pro Plus, Sika Pump Pro XL & Sika Pump Pro BBPS
07.03.2019, VO2

11 ATTACHMENTS

1. AquaSafe Alarm – Installation and Operating Guidelines
2. Edincare Service Agreement

12 LEGAL NOTE

The information, and, in particular, the recommendations relating to the application and end-use of Sika products, are given in good faith based on Sika's current knowledge and experience of the products when properly stored, handled and applied under normal conditions in accordance with Sika's recommendations. In practice, the differences in materials, substrates and actual site conditions are such that no warranty in respect of merchantability or of fitness for a particular purpose, nor any liability arising out of any legal relationship whatsoever, can be inferred either from this information, or from any written recommendations, or from any other advice offered. The user of the product must test the products suitability for the intended application and purpose. Sika reserves the right to change the properties of its products. The proprietary rights of third parties must be observed. All orders are accepted subject to our current terms of sale and delivery. Users must always refer to the most recent issue of the local Product Data Sheet for the product concerned, copies of which will be supplied on request.

Sika Limited
Watchmead
Welwyn Garden City
Hertfordshire
AL7 1BQ
www.sika.co.uk

Version given by
Alex Burman
Phone: +44 (0) 1707 394444
Mail: waterproofing@uk.sika.com

Method Statement
Sika Pump Pro Plus, Sika Pump Pro XL & Sika Pump Pro BBPS
07.03.2019, VO2