

Sika at Work



LIEBHERR HQ

**SIKA'S HIGH IMPACT METALLIC FLOOR SCREED
PROVIDES SUPER STRONG FOUNDATION AT
LIEBHERR HQ**





SIKA'S HIGH IMPACT METALLIC FLOOR SCREED PROVIDES SUPER STRONG FOUNDATION AT LIEBHERR HQ

A 400m² application of Sikafloor High Impact Metallic Screed (HIMS) has provided unrivalled resistance to mechanical impact, chemical attack and protection from the strains of supporting 40 tonne heavy machinery at the new £3 million Scottish Headquarters of Liebherr – one of the world's largest heavy machinery makers.

Designed by Slorach Wood Architects and built by main contractor Dunne Group, the project comprises 825m² of office space and a 1,175m² factory floor. Delivered within a strict timeframe of just 40 weeks, the scheme required a fast to apply and hard-wearing flooring solution for two main factory bays. Specified for its proven performance and extreme resistance, the ultra-hard wearing Sikafloor HIMS from global building product manufacturer Sika fitted the bill perfectly.

Appointed to complete the flooring application, specialist contractor J & D Solutions, delivered the project within a ten day period. As Sikafloor HIMS was to be set into the centre of the concrete slab, J & D Solutions first had to reduce the concrete levels within the specified area to 12mm and fit new edges. Once this had been completed, they could apply the Sikafloor HIMS floor onto the existing slab.

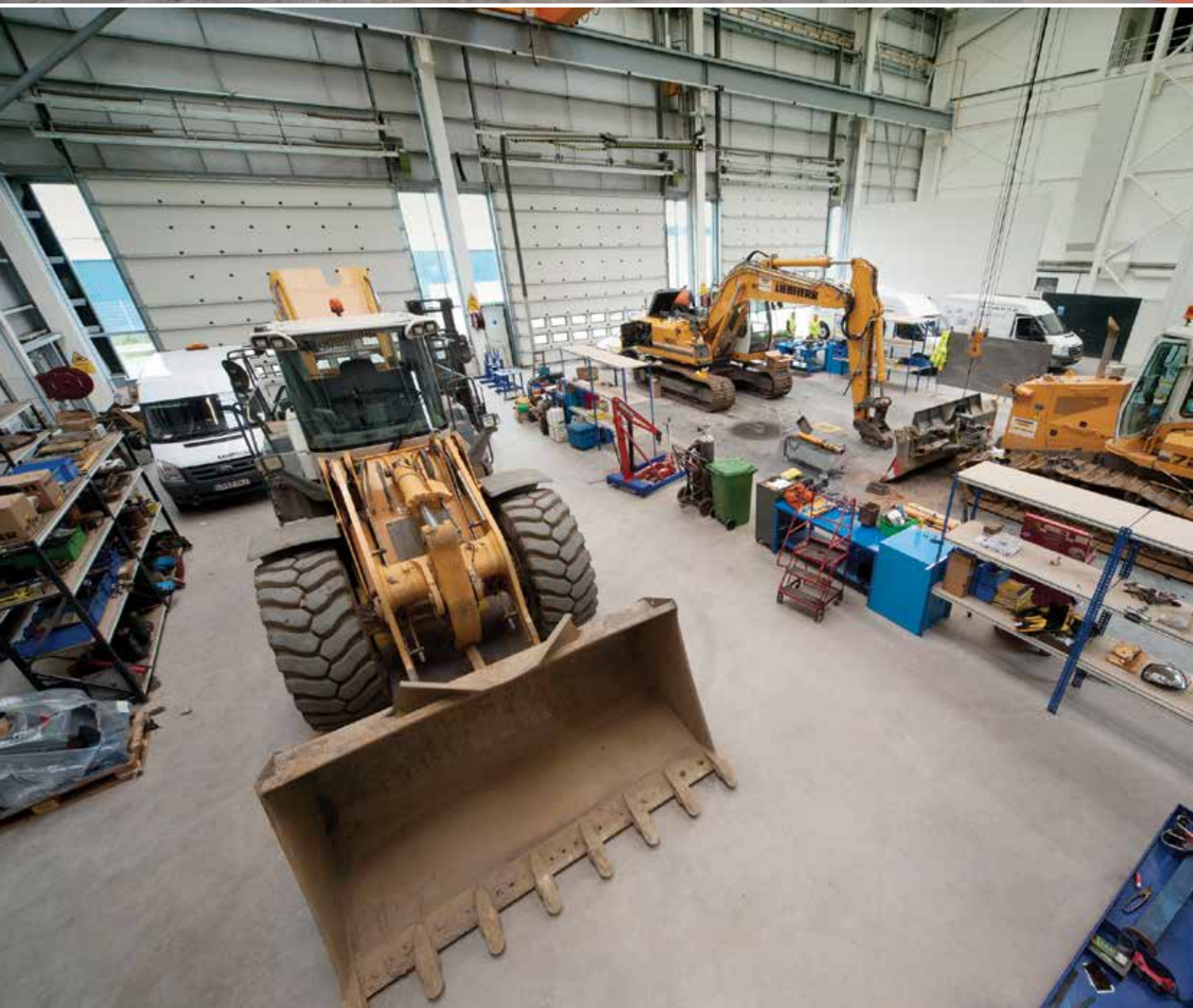
Sikafloor HIMS provided the most suitable, durable and reliable solution for the Liebherr factory. Created by mixing Sika resin with a titanium alloy and supplied to site pre-bagged, the high performance system and quality application ensured a resistant surface which would withstand constant foot and wheeled traffic, as well as cranes and hydraulic excavators.

In addition to Sikafloor HIMS, Sika offers an extensive range of concrete and resin flooring solutions suitable for both new build and refurbishment. Designed for high wear applications such as hospitals, schools, warehouses and manufacturing facilities, Sika's flooring range has been designed with performance and durability in mind.

Now complete, the Sikafloor HIMS solid foundation will ensure Liebherr can continue to produce the very best heavy machinery and domestic appliances from its base in Bathgate, Scotland, which the company has occupied for over 40 years.

For more information on Sika's range of products visit www.sikaconstruction.co.uk. To arrange a free survey or for general enquiries including technical, on or off site support, please call 0800 1123863.







Further Information

Sika Construction has a comprehensive range of car park and concrete repair solutions to meet the requirements of virtually any structure and application. These solutions are backed up by a highly experienced technical team, who offer expert specification advice and support.

For Project specific technical advice is available please contact our technical department on 0800 1123863 or alternatively email: technical@uk.sika.com



Sika Limited, Head Office, Welwyn Garden City, Hertfordshire, AL7 1BQ
Tel 01707 394444, Fax 01707 329129, www.sika.co.uk



Certificate No. EMS 45308



Certificate No. FM 12504