

## SYSTEM DATA SHEET

# Sikafloor® DecoDur EM-21 Compact

HIGHLY MECHANICAL RESISTANT, POWER FLOAT FINISHED, COLOURED QUARTZ FLOOR COVERING

## PRODUCT DESCRIPTION

Sikafloor® DecoDur EM-21 Compact is a highly mechanical resistant, decorative, coloured, smooth, low VOC, floor covering designed for indoor applications.

## USES

Sikafloor® DecoDur EM-21 Compact may only be used by experienced professionals.

- Industrial (e.g. Manufacturing)
- Transportation (e.g. Airports)
- Retail (e.g. Shopping Malls)

## CHARACTERISTICS / ADVANTAGES

- Very good mechanical and abrasion resistance
- Decorative
- Low VOC-content

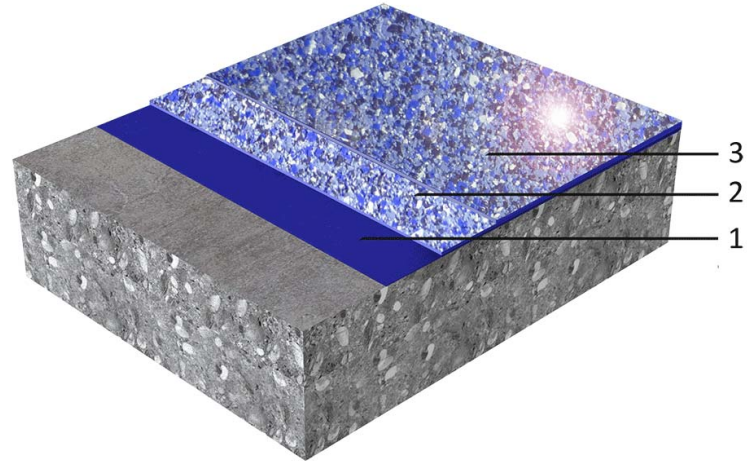
## APPROVALS / STANDARDS

- Particle emission certificate Sikafloor® DecoDur EM-21 Compact CSM Statement of Qualification Report GMP A- No. SI 1008-533 (system tested with Sikafloor®-169 as a top coat)
- Biological resistance certificate Sikafloor® DecoDur EM-21 Compact CSM Statement of Qualification – ISO 846, very good - Report No. SI 1008-533 (system tested with Sikafloor®-169 as a top coat)
- Fire classification of Sikafloor® DecoDur EM-21 Compact in accordance with EN 13501-1, classification report-No. 2010-1878-K1, Exova Brandhaus, Germany, August 2010 (system tested with Sikafloor®-304 W as a top coat)

# SYSTEM INFORMATION

System Structure

Sikafloor® DecoDur EM-21 Compact system

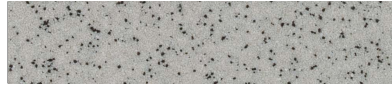


1. Primer	Sikafloor®-150, 151 or 169 slightly broadcasted with Sika®-PU Quartz CF 0.3–1.2mm
2. Wearing coat	Slurry of 1 pbw Sikafloor®-169 + 1 pbw Sikafloor®-Compact Filler
Broadcast	broadcast to saturation with Sika®-PU Quartz CF 0.3–1.2mm
Power floating	
Seal coat	Sikafloor®-169
3. Top coat	Sikafloor®-304 W (mat finish)
Alternative top coat 1 :	Sikafloor®-316 with highly scratch resistance properties
Alternative top coat 2 :	Sikafloor®-169 with Extender T (glossy orange peel finish)

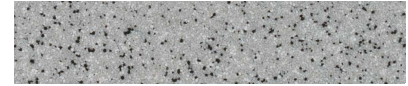
Composition	Epoxy
Appearance	Matt or glossy orange peel finish possible

## Colour

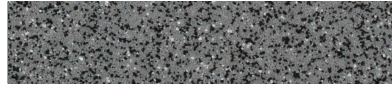
Iceberg:



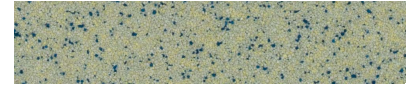
Hiero:



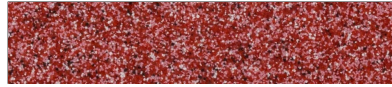
Noblesse:



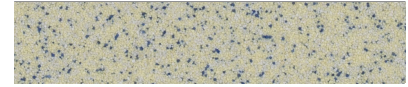
Amande:



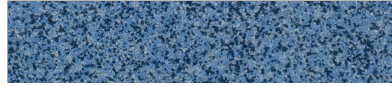
Framboise:



Fleur De Tilleul:



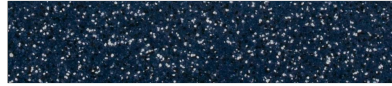
Blue Jean:



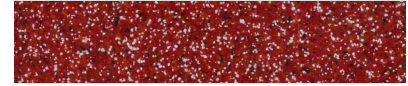
Nougat:



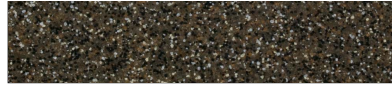
Mer Du Nord:



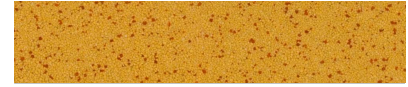
Bordeaux:



Granit:



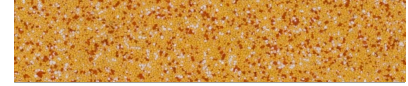
Peche:



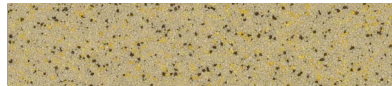
Dune:



Sanguine:



Sable:



Nominal Thickness	~2–3mm
-------------------	--------

## TECHNICAL INFORMATION

Reaction to Fire	Bfl-S1	(DIN EN 13501-1)
------------------	--------	------------------

Chemical Resistance	Resistant to many chemicals. Contact Sika technical service for specific information.	
---------------------	---	--

Skid / Slip Resistance	R9	(DIN 51130)
------------------------	----	-------------

## APPLICATION INFORMATION

Consumption		
Sikafloor® DecoDur EM-21 Compact system		
Coating System	Product	Consumption
Primer	1-2 x Sikafloor®-150, 151 or 169	1-2 x ~0.3–0.5 kg/m <sup>2</sup>
Broadcast	Slightly broadcast with Sika-PU Quartz CF 0.3-1.2mm	~1.0 kg/m <sup>2</sup>
Wearing coat	Slurry made of 1 pbw Sikafloor®-169 + 1 pbw Sikafloor®-Compact Filler	~1.5–1.7 kg/m <sup>2</sup>
Broadcast	Broadcast to saturation with Sika®-PU Quartz CF 0.3-1.2mm	~3.0–4.0kg/m <sup>2</sup>
Powerfloating		
Seal coat	1 x Sikafloor®-169 (after removing the upstanding not fully embedded Sika-PU Quartz CF 0.3-1.2mm with a steel trowel and vacuuming of the surface)	~0.25–0.3 kg/m <sup>2</sup>
Top coat (option1)	1 x Sikafloor®- 316 +2 % Antiskid Agent (gloss finish)*	~0.07–0.08 kg/m <sup>2</sup>
Top coat (option2)	1 x Sikafloor®- 304 W (Matt finish)*	~0.15 kg/m <sup>2</sup>
Top coat (option3)	1 x Sikafloor®- 169 (Glossy orange peel finish)	~0.15 kg/m <sup>2</sup>

\* Before applying Sikafloor®-304 W or Sikafloor®-316 please refer to the individual product data sheets

<b>Product Temperature</b>	Please refer to the individual Product Data Sheets												
<b>Ambient Air Temperature</b>	+10 °C min. / +30 °C max.												
<b>Relative Air Humidity</b>	80 % r.h. max.												
<b>Dew Point</b>	Beware of condensation! The substrate and uncured floor must be at least 3 °C above dew point to reduce the risk of condensation or blooming on the floor finish.												
<b>Substrate Temperature</b>	+10 °C min. / +30 °C max.												
<b>Substrate Moisture Content</b>	When performing application work with Sikafloor® DecoDur EM-21 Compact, the substrate moisture content must not exceed 4 % pbw measured by Tramex. Test method: Sika®-Tramex meter, CM - measurement or Oven-dry-method. No rising moisture according to ASTM (Polyethylene-sheet).												
<b>Waiting Time / Overcoating</b>	Before applying Sikafloor®-169 on Sikafloor®-156/-161/-264/-169 allow: <table border="1"> <thead> <tr> <th>Substrate temperature</th> <th>Minimum</th> <th>Maximum</th> </tr> </thead> <tbody> <tr> <td>+10 °C</td> <td>36 hours</td> <td>4 days</td> </tr> <tr> <td>+20 °C</td> <td>12 hours</td> <td>2 days</td> </tr> <tr> <td>+30 °C</td> <td>8 hours</td> <td>1 day</td> </tr> </tbody> </table> Before applying Sikafloor®-304 W on Sikafloor®-169 allow:	Substrate temperature	Minimum	Maximum	+10 °C	36 hours	4 days	+20 °C	12 hours	2 days	+30 °C	8 hours	1 day
Substrate temperature	Minimum	Maximum											
+10 °C	36 hours	4 days											
+20 °C	12 hours	2 days											
+30 °C	8 hours	1 day											

Substrate temperature	Minimum	Maximum
+10 °C	45 hours	4 days
+20 °C	36 hours	3 days
+30 °C	24 hours	2 days

Before applying Sikafloor®-316 on Sikafloor®-169 allow:

**Before applying Sikafloor®-316 on Sikafloor® epoxies, the surface has to be treated with a green Scotch-Brite™ pad to remove contaminations or be cleaned professionally with Kärcher RM 776 or Veroclean.**

Substrate temperature	Minimum	Maximum
+10 °C	30 hours	4 days
+20 °C	24 hours	3 days
+30 °C	16 hours	2 days

Times are approximate and will be affected by changing ambient conditions particularly temperature and relative humidity.

#### Applied Product Ready for Use

Sikafloor®-169

Temperature	Foot traffic	Light traffic	Full cure
+10 °C	~ 48 hours	~ 6 days	~ 10 days
+20 °C	~ 30 hours	~ 4 days	~ 7 days
+30 °C	~ 20 hours	~ 3 days	~ 5 days

Sikafloor®-316

Temperature	Foot traffic	Light traffic	Full cure
+10 °C	~ 20 hours	~ 48 hours	~ 10 days
+20 °C	~ 16 hours	~ 36 hours	~ 7 days
+30 °C	~ 12 hours	~ 24 hours	~ 5 days

Sikafloor®-304 W

Temperature	Foot traffic	Light traffic	Full cure
+10 °C	~ 30 hours	~ 48 hours	~ 6 days
+20 °C	~ 16 hours	~ 24 hours	~ 4 days
+30 °C	~ 12 hours	~ 18 hours	~ 3 days

## PRODUCT INFORMATION

<b>Packaging</b>	Please refer to the individual Product Data Sheets
<b>Shelf Life</b>	Please refer to the individual Product Data Sheets
<b>Storage Conditions</b>	Please refer to the individual Product Data Sheets

## MAINTENANCE

### CLEANING

Please refer to Sikafloor®- Cleaning Regime

### FURTHER DOCUMENTS

- Sika® Information Manual Mixing & Applications of Flooring systems

- Sika® Information Manual Evaluation and Preparation of Surfaces for Flooring systems

### LIMITATIONS

- Do not apply Sikafloor® DecoDur EM-21 Compact on substrates with rising moisture.
- Freshly applied Sikafloor® DecoDur EM-21 Compact must be protected from damp, condensation and water for at least 24 hours.
- The incorrect assessment and treatment of cracks

may lead to a reduced service life and reflective cracking.

- For exact colour matching, ensure that all the products in each area are applied from the same control batch numbers.
- Under certain conditions, underfloor heating or high ambient temperatures combined with high point loading, may lead to imprints in the resin.
- If heating is required do not use gas, oil, paraffin or other fossil fuel heaters, these produce large quantities of both CO<sub>2</sub> and H<sub>2</sub>O water vapour, which may adversely affect the finish. For heating use only electric powered warm air blower systems.

## VALUE BASE

All technical data stated in this Product Data Sheet are based on laboratory tests. Actual measured data may vary due to circumstances beyond our control.

## LOCAL RESTRICTIONS

Please note that as a result of specific local regulations the performance of this product may vary from country to country. Please consult the local Product Data Sheet for the exact description of the application fields.

## ECOLOGY, HEALTH AND SAFETY

For information and advice on the safe handling, storage and disposal of chemical products, users shall refer to the most recent Safety Data Sheet (SDS) containing physical, ecological, toxicological and other safety-related data.

## LEGAL NOTES

The information, and, in particular, the recommendations relating to the application and end-use of Sika products, are given in good faith based on Sika's current knowledge and experience of the products when properly stored, handled and applied under normal conditions in accordance with Sika's recommendations. In practice, the differences in materials, substrates and actual site conditions are such that no warranty in respect of merchantability or of fitness for a particular purpose, nor any liability arising out of any legal relationship whatsoever, can be inferred either from this information, or from any written recommendations, or from any other advice offered. The user of the product must test the product's suitability for the intended application and purpose. Sika reserves the right to change the properties of its products. The proprietary rights of third parties must be observed. All orders are accepted subject to our current terms of sale and delivery. Users must always refer to the most recent issue of the local Product Data Sheet for the product concerned, copies of which will be supplied on request.

### SIKA LIMITED

Watchmead  
Welwyn Garden City  
Hertfordshire, AL7 1BQ  
Tel: 01707 394444  
Web: [www.sika.co.uk](http://www.sika.co.uk)  
Twitter: @SikaLimited



System Data Sheet  
Sikafloor® DecoDur EM-21 Compact  
February 2020, Version 02.02  
020811900000000020

SikafloorDecoDurEM-21Compact-en-GB-(02-2020)-2-2.pdf