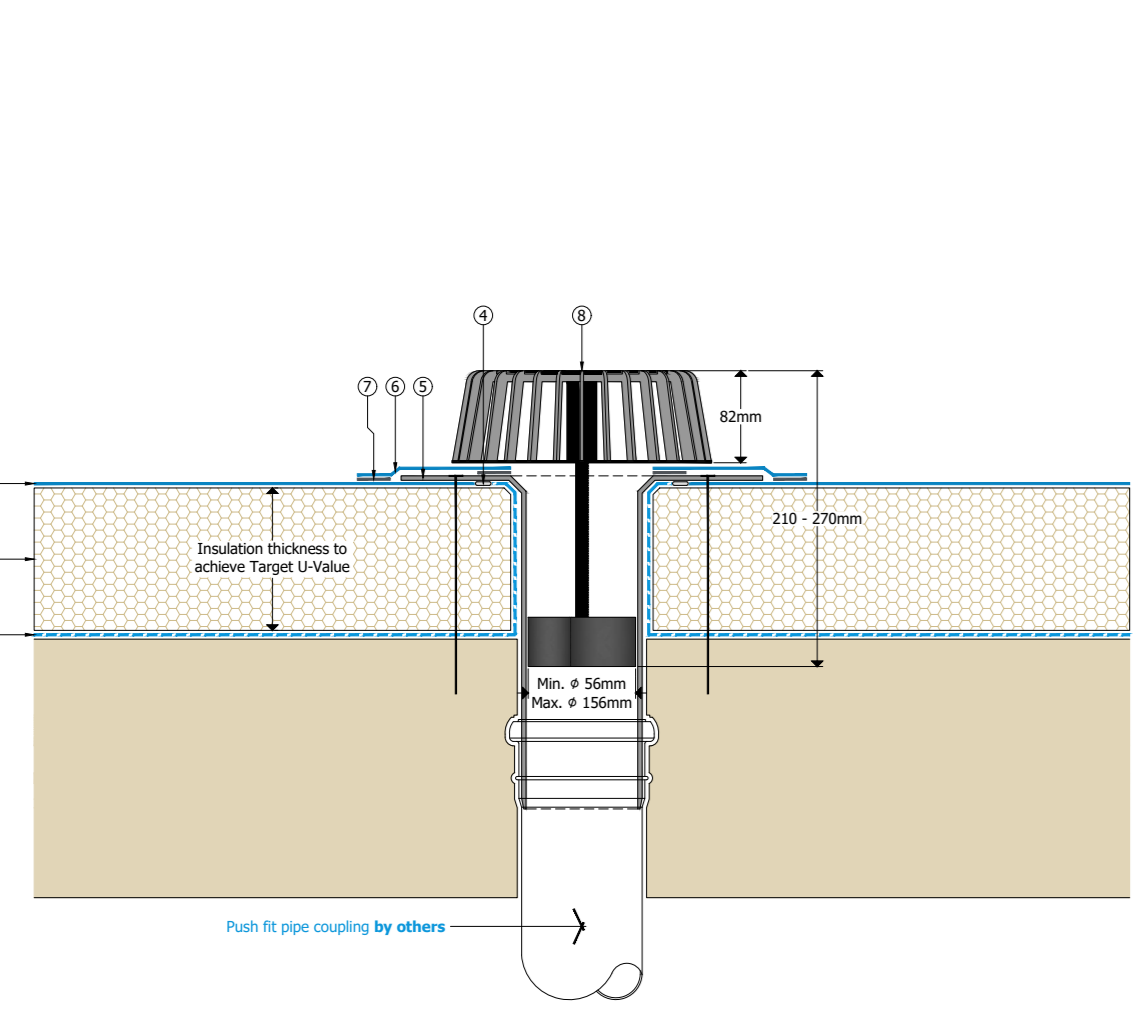
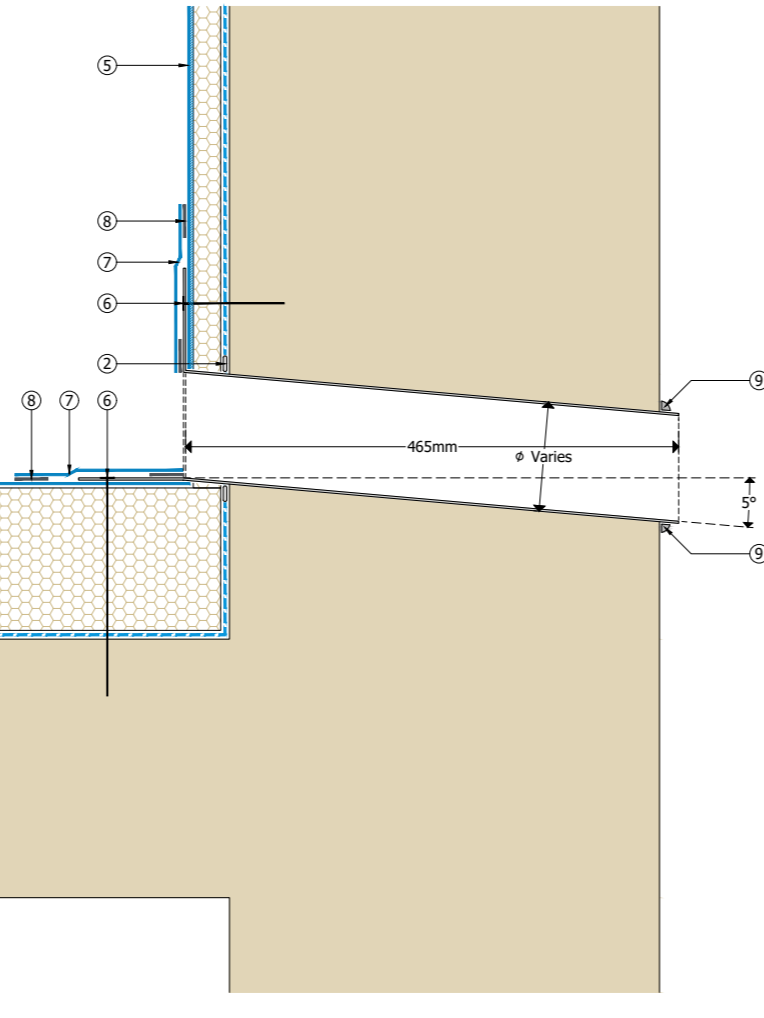


- ① S-Vap Air & Vapor Control Layer as specified
- ② SikaTherm® insulation as specified
- ③ Mechanically fixed Sika Single Ply Membrane in accordance with Sika Limited Specification
- ④ Air & Vapor Control Layer sealed with S-Wrap® Tape F (Applicable to polyethylene AXL membranes)
- ⑤ Mechanically fixed Sika Single Ply Membrane to upstands
- ⑥ Self-adhered Sika Single Ply Membrane to upstands
- ⑦ Sika Single Ply Membrane cover strip in accordance with Sika Limited Specification
- ⑧ Hot Air Walls
- ⑨ SikaSeal®



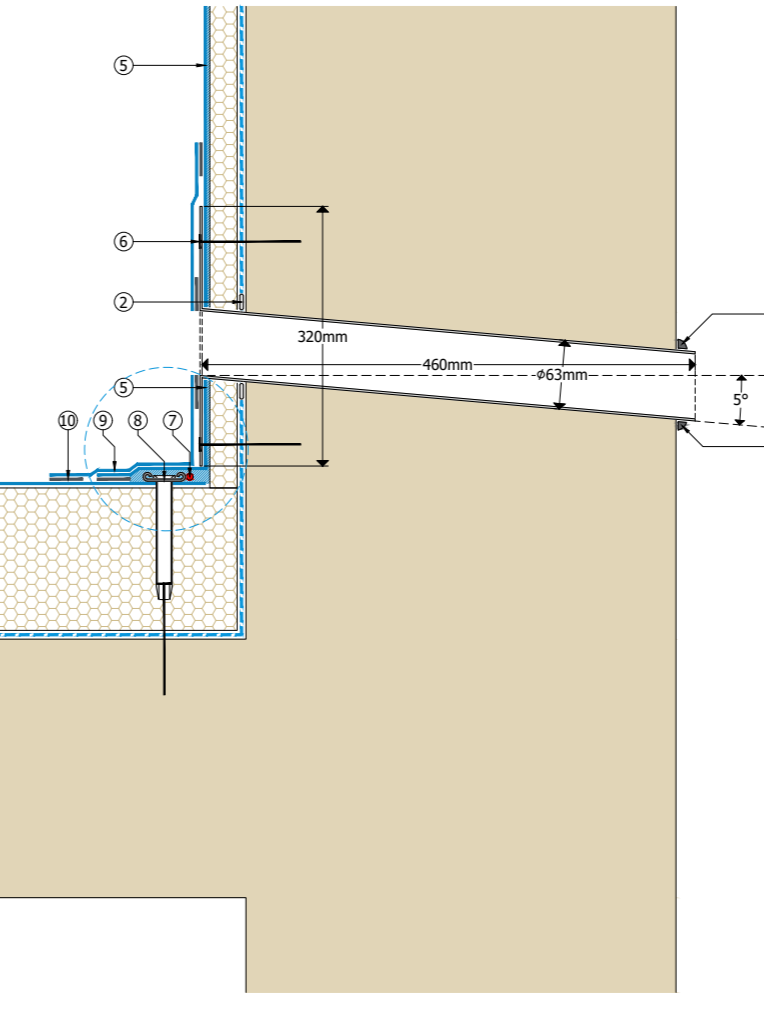
Sika Single Ply Membrane Membrane Seam - Mechanically Fixed Drainage - Internal Vertical Outlet

- ① S-Vap Air & Vapor Control Layer as specified
- ② Air & Vapor Control Layer sealed with S-Wrap® Tape F (Applicable to polyethylene AXL membranes)
- ③ SikaTherm® insulation as specified
- ④ Mechanically fixed Sika Single Ply Membrane in accordance with Sika Limited Specification
- ⑤ Self-adhered Sika Single Ply Membrane to upstands
- ⑥ Mechanically fixed Sika Single Ply Membrane to upstands
- ⑦ Sika Single Ply Membrane cover strip in accordance with Sika Limited Specification
- ⑧ Hot Air Walls
- ⑨ Specified Sika Sealant



Sika Single Ply Membrane Membrane Seam - Mechanically Fixed Drainage - Horizontal Over-Deck

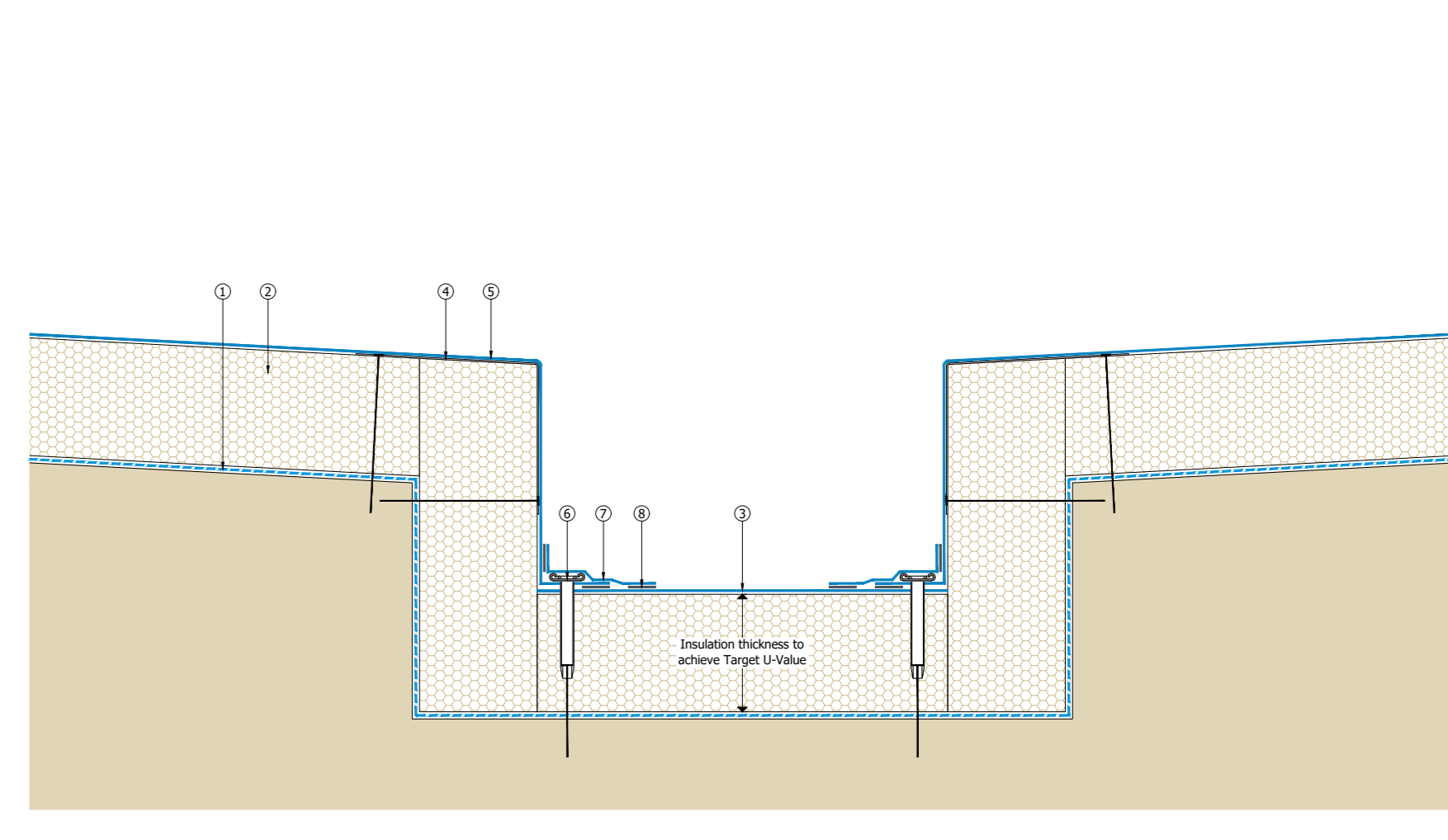
- ① S-Vap Air & Vapor Control Layer as specified
- ② Air & Vapor Control Layer sealed with S-Wrap® Tape F (Applicable to polyethylene AXL membranes)
- ③ SikaTherm® insulation as specified
- ④ Mechanically fixed Sika Single Ply Membrane in accordance with Sika Limited Specification
- ⑤ Self-adhered Sika Single Ply Membrane to upstands
- ⑥ Mechanically fixed Sika Single Ply Membrane to upstands
- ⑦ Sika Sealing Cord
- ⑧ Mechanically fixed S-Bar
- ⑨ Hot Air Walls
- ⑩ Specified Sika Sealant



OPTIONAL FIXING USING SFT TUBE

Sika Single Ply Membrane Membrane Seam - Mechanically Fixed Drainage - Over-Deck

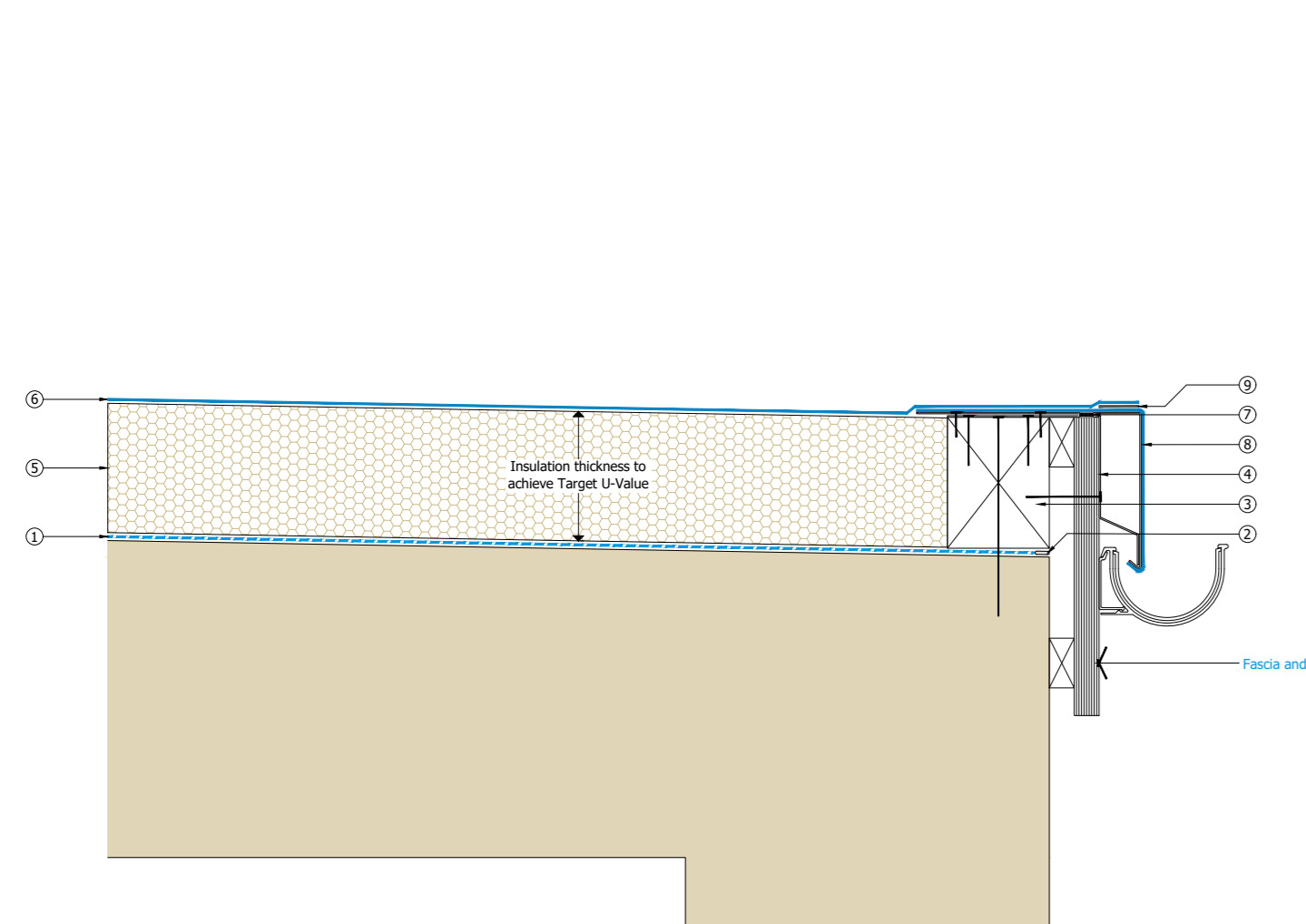
- ① S-Vap Air & Vapor Control Layer as specified
- ② Air & Vapor Control Layer sealed with S-Wrap® Tape F (Applicable to polyethylene AXL membranes)
- ③ SikaTherm® insulation as specified
- ④ Mechanically fixed Sika Single Ply Membrane to upstands in accordance with Sika Limited Specification
- ⑤ Mechanically fixed Galvanized Steel Head Edge
- ⑥ Mechanically fixed Sika Single Ply Membrane foot sheet and joint updated in accordance with Sika Limited Specification
- ⑦ Hot Air Walls
- ⑧ Sika Single Ply Membrane cover strip
- ⑨ Hot Air Walls



Sika Single Ply Membrane Membrane Seam - Mechanically Fixed Drainage - Internal Over-Deck

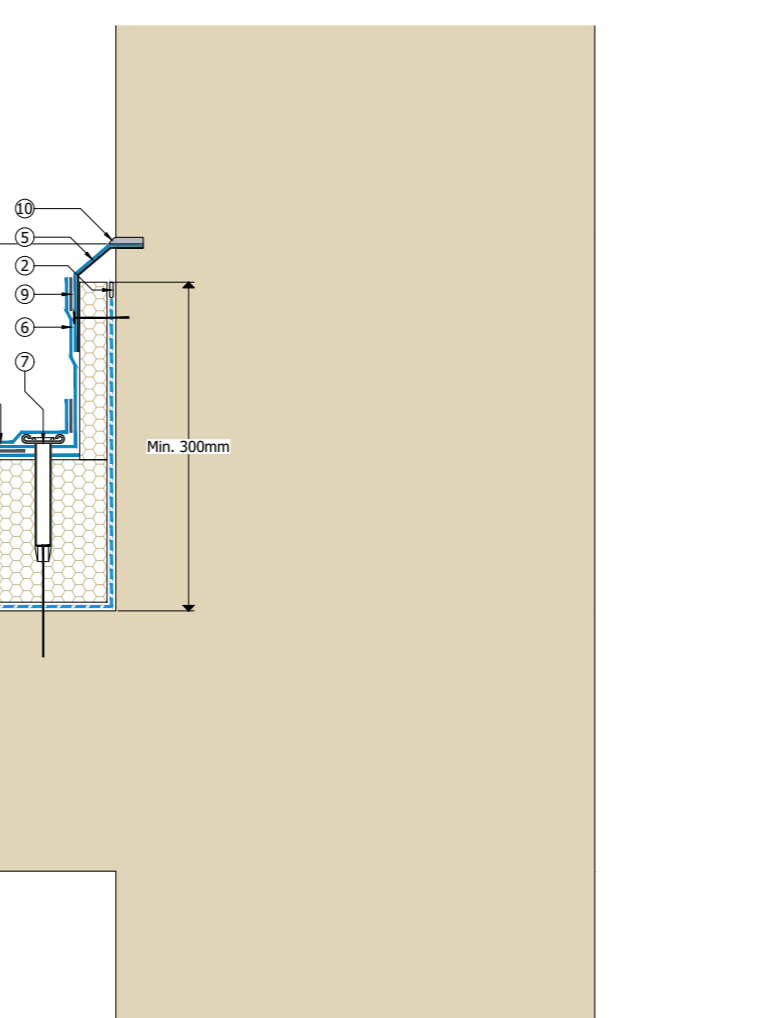
- ① S-Vap Air & Vapor Control Layer as specified
- ② Air & Vapor Control Layer sealed with S-Wrap® Tape F (Applicable to polyethylene AXL membranes)
- ③ SikaTherm® insulation as specified
- ④ Mechanically fixed Sika Single Ply Membrane in accordance with Sika Limited Specification
- ⑤ Self-adhered Sika Single Ply Membrane to upstands
- ⑥ Hot Air Walls

**Strengthening Chert Specification:**  
**Material:** Galvanized steel not S16000.  
**Dimensions:** 100mm wide with a lip to match the top lip of the Sika Head Roof Tile. There should be 10mm overlap on per the head edge.  
**Location:** Chert to be installed at every Sika Head Roof Trim joint and max every 500mm between the joints. Alternatively, a continuous galvanized chert can be used.  
**Attachment:** Utilize SikaSeal® Sealant. The SikaSeal® Sealant should be applied to the chert above and below using a minimum Sika Sealant. Ensure for a continuous chert should be installed in the same position as for standard details.  
**General:** The sealing strip should be installed after the installation of the chert to prevent wind uplift at the perimeter edge.



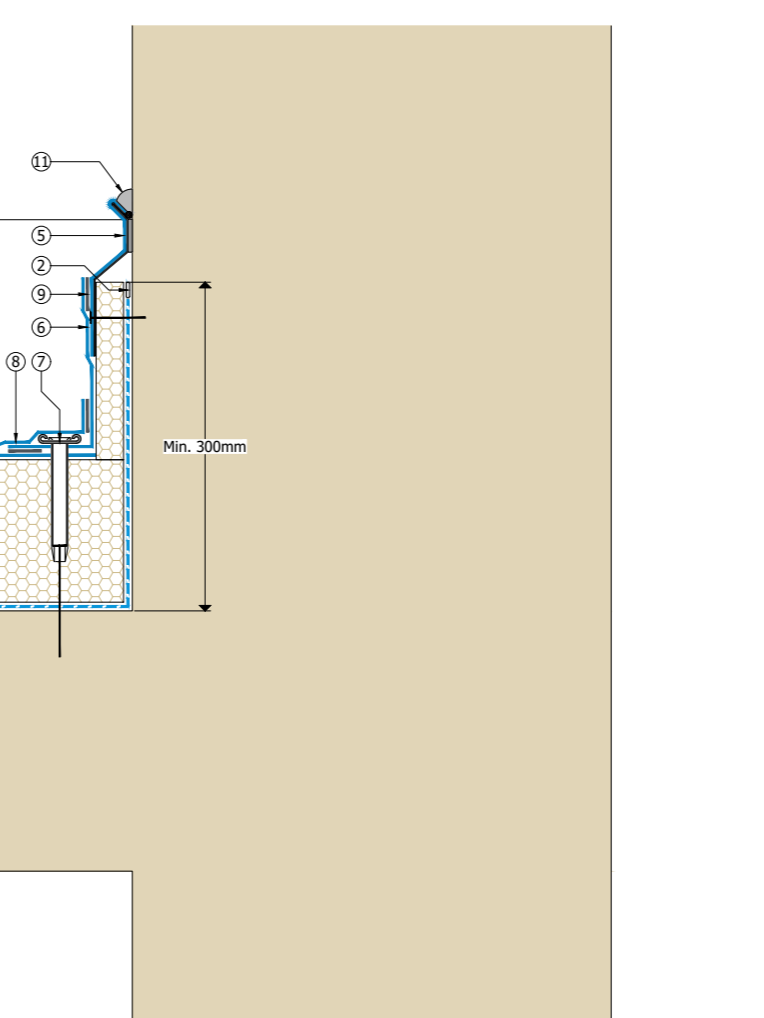
Sika Single Ply Membrane Membrane Seam - Mechanically Fixed Drainage - Dip Edge to External Exterior

- ① S-Vap Air & Vapor Control Layer as specified
- ② Air & Vapor Control Layer sealed with S-Wrap® Tape F (Applicable to polyethylene AXL membranes)
- ③ SikaTherm® insulation as specified
- ④ Mechanically fixed Sika Single Ply Membrane in accordance with Sika Limited Specification
- ⑤ Sika Single Ply Membrane to upstands
- ⑥ Mechanically fixed S-Bar
- ⑦ Self-adhered Sika Single Ply Membrane to upstands
- ⑧ Sika Single Ply Membrane cover strip
- ⑨ Hot Air Walls
- ⑩ Specified Sika Sealant



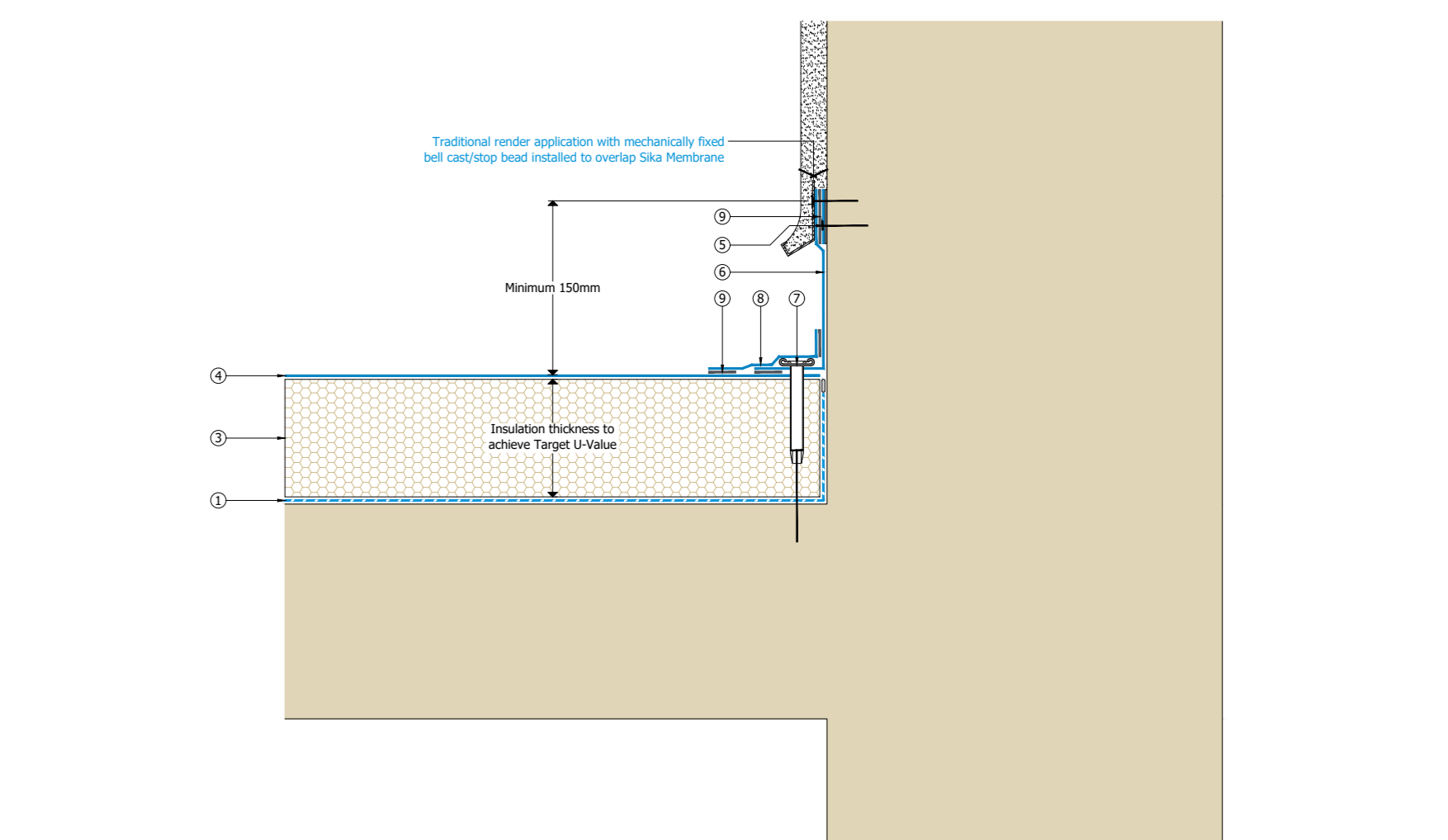
Sika Single Ply Membrane Membrane Seam - Mechanically Fixed Upstand - Chert

- ① S-Vap Air & Vapor Control Layer as specified
- ② Air & Vapor Control Layer sealed with S-Wrap® Tape F (Applicable to polyethylene AXL membranes)
- ③ SikaTherm® insulation as specified
- ④ Mechanically fixed Sika Single Ply Membrane in accordance with Sika Limited Specification
- ⑤ Sika Head Roof Trim sealed with SikaSeal® AT (Sealant) in strict accordance with Sika Limited recommendations, mechanically fix counterflashing at lower position
- ⑥ Sika Single Ply Membrane to upstands
- ⑦ Mechanically fixed S-Bar
- ⑧ Self-adhered Sika Single Ply Membrane to upstands
- ⑨ Hot Air Walls
- ⑩ Specified Sika Sealant



Sika Single Ply Membrane Membrane Seam - Mechanically Fixed Upstand - Counter Flashing

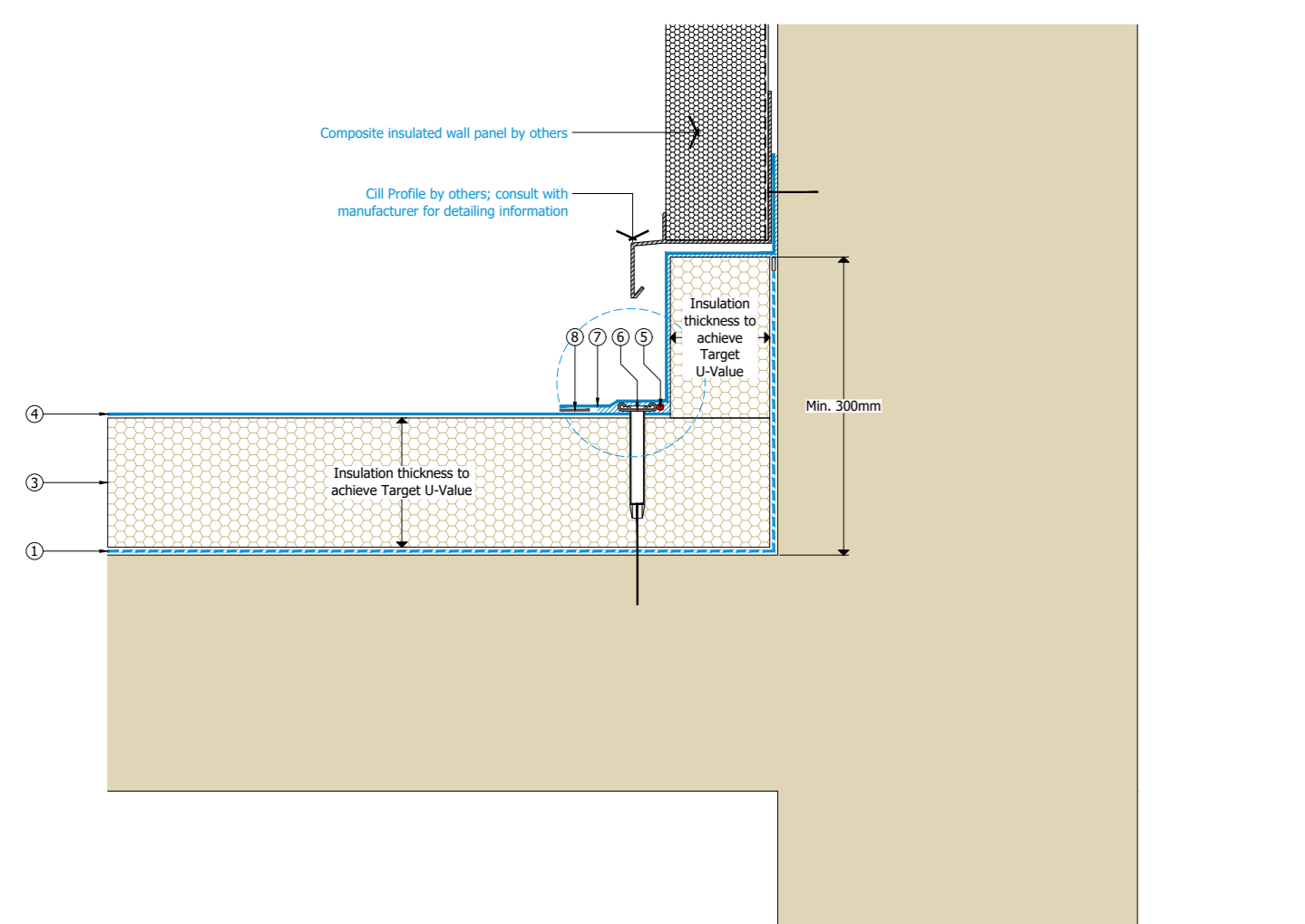
- ① S-Vap Air & Vapor Control Layer as specified
- ② Air & Vapor Control Layer sealed with S-Wrap® Tape F (Applicable to polyethylene AXL membranes)
- ③ SikaTherm® insulation as specified
- ④ Mechanically fixed Sika Single Ply Membrane to upstands in accordance with Sika Limited Specification
- ⑤ Mechanically fixed Sika Head Roof Tile
- ⑥ Sika Sealing Cord
- ⑦ Sika Single Ply Membrane to upstands
- ⑧ Mechanically fixed S-Bar
- ⑨ Sika Single Ply Membrane cover strip
- ⑩ Hot Air Walls



Sika Single Ply Membrane Membrane Seam - Mechanically Fixed Upstand - Sealant

- ① S-Vap Air & Vapor Control Layer as specified
- ② Air & Vapor Control Layer sealed with S-Wrap® Tape F (Applicable to polyethylene AXL membranes)
- ③ SikaTherm® insulation as specified
- ④ Mechanically fixed Sika Single Ply Membrane in accordance with Sika Limited Specification
- ⑤ Sika Sealing Cord
- ⑥ Self-adhered Sika Single Ply Membrane to upstands
- ⑦ Hot Air Walls

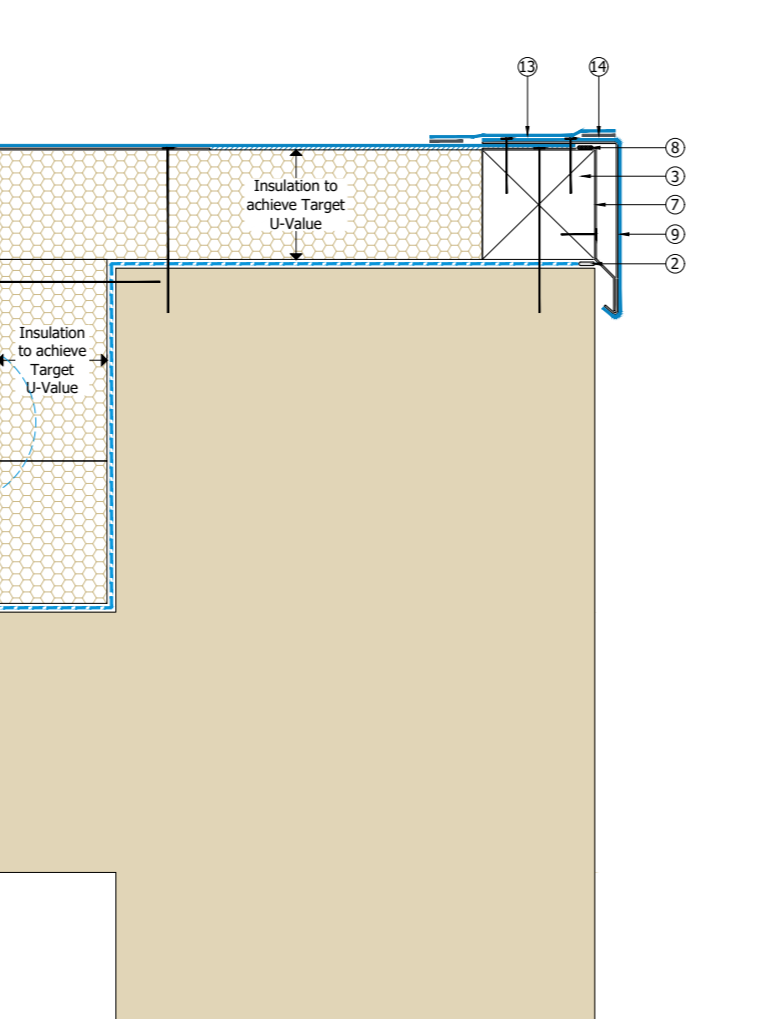
**Strengthening Chert Specification:**  
**Material:** Galvanized steel not S16000.  
**Dimensions:** 100mm wide with a lip to match the top lip of the Sika Head Roof Tile. There should be 10mm overlap on per the head edge.  
**Location:** Chert to be installed at every Sika Head Roof Trim joint and max every 500mm between the joints. Alternatively, a continuous galvanized chert can be used.  
**Attachment:** Utilize SikaSeal® Sealant. The SikaSeal® Sealant should be applied to the chert above and below using a minimum Sika Sealant. Ensure for a continuous chert should be installed in the same position as for standard details.  
**General:** The sealing strip should be installed after the installation of the chert to prevent wind uplift at the perimeter edge.



OPTIONAL FIXING USING SFT TUBE

Sika Single Ply Membrane Membrane Seam - Mechanically Fixed Upstand - Cladding

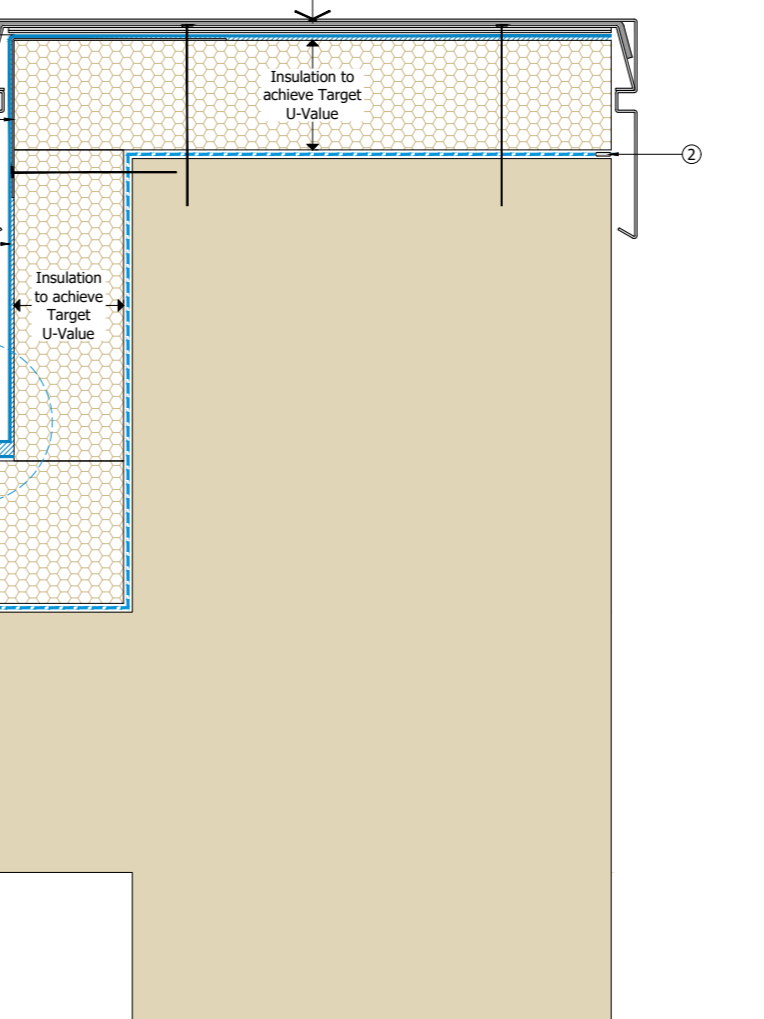
- ① S-Vap Air & Vapor Control Layer as specified
- ② Air & Vapor Control Layer sealed with S-Wrap® Tape F (Applicable to polyethylene AXL membranes)
- ③ SikaTherm® insulation as specified
- ④ Mechanically fixed Sika Single Ply Membrane in accordance with Sika Limited Specification
- ⑤ Sika Sealing Cord
- ⑥ Self-adhered Sika Single Ply Membrane to upstands
- ⑦ Sika Single Ply Membrane cover strip
- ⑧ Hot Air Walls



OPTIONAL FIXING USING SFT TUBE

Sika Single Ply Membrane Membrane Seam - Mechanically Fixed Upstand - Kerb

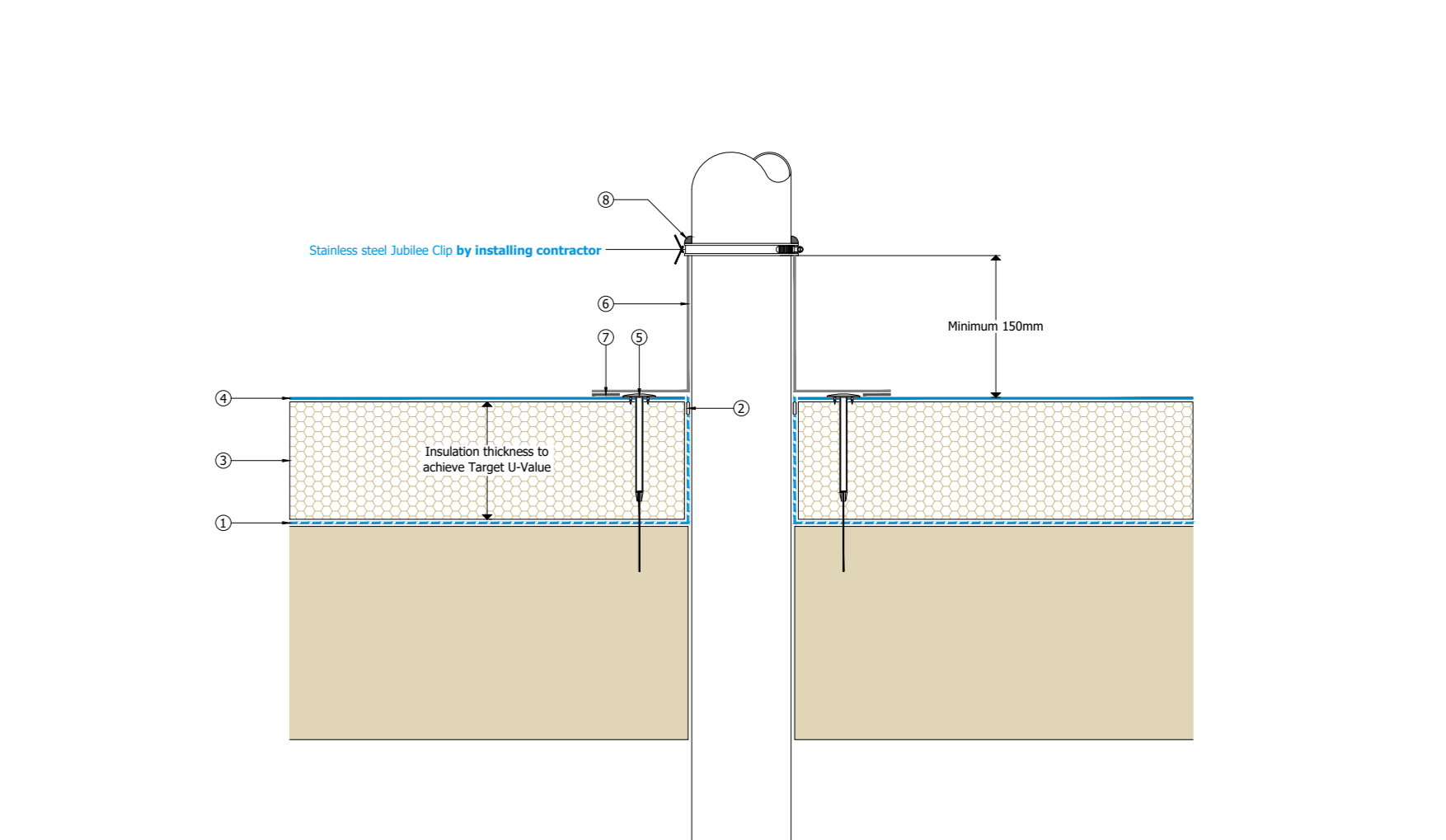
- ① S-Vap Air & Vapor Control Layer as specified
- ② Air & Vapor Control Layer sealed with S-Wrap® Tape F (Applicable to polyethylene AXL membranes)
- ③ SikaTherm® insulation as specified
- ④ Mechanically fixed Sika Single Ply Membrane in accordance with Sika Limited Specification
- ⑤ Sika Sealing Cord
- ⑥ Self-adhered Sika Single Ply Membrane to upstands
- ⑦ Hot Air Walls



OPTIONAL FIXING USING SFT TUBE

Sika Single Ply Membrane Membrane Seam - Mechanically Fixed Upstand - Cladding

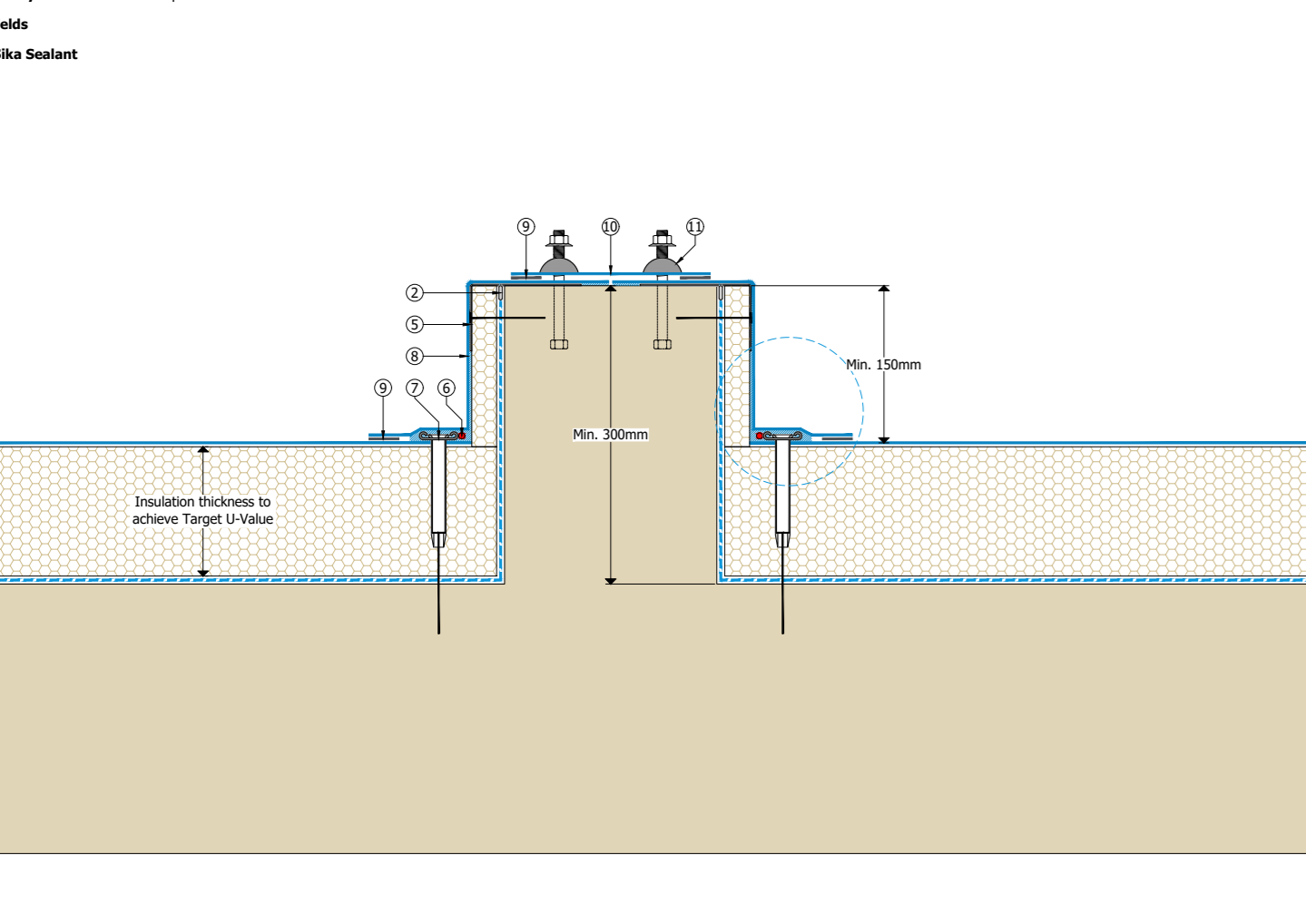
- ① S-Vap Air & Vapor Control Layer as specified
- ② Air & Vapor Control Layer sealed with S-Wrap® Tape F (Applicable to polyethylene AXL membranes)
- ③ SikaTherm® insulation as specified
- ④ Mechanically fixed Sika Single Ply Membrane in accordance with Sika Limited Specification
- ⑤ Sika Sealing Cord
- ⑥ Self-adhered Sika Single Ply Membrane to upstands
- ⑦ Hot Air Walls
- ⑧ Specified Sika Sealant



OPTIONAL FIXING USING SFT TUBE

Sika Single Ply Membrane Membrane Seam - Mechanically Fixed Upstand - Kerb

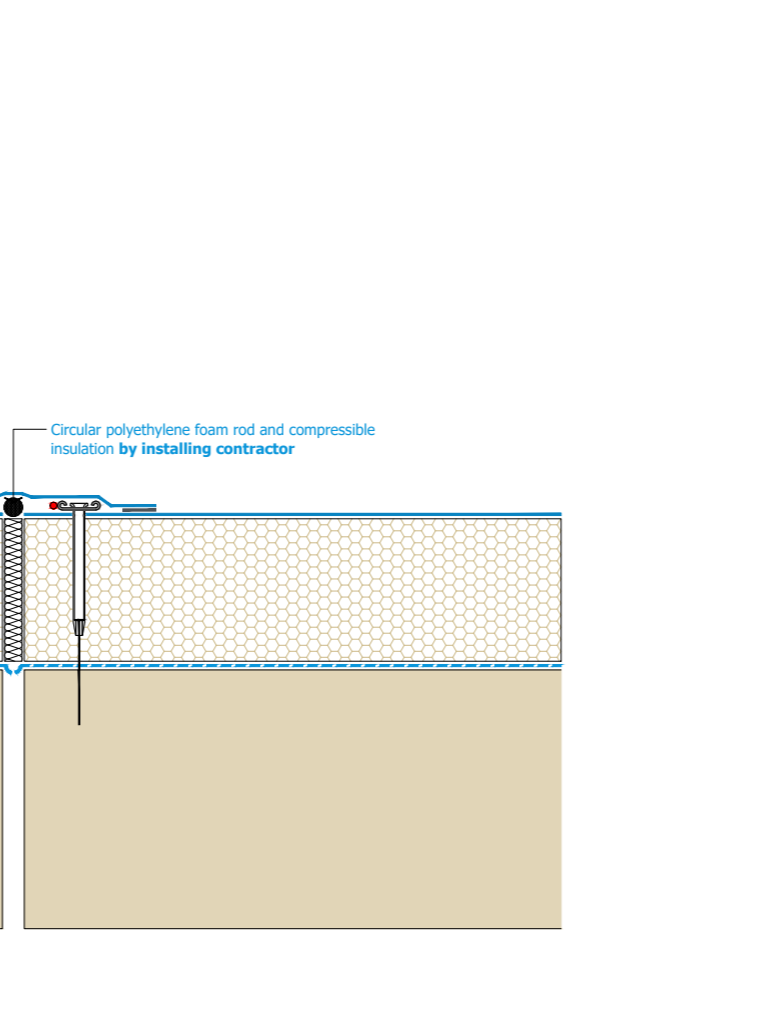
- ① S-Vap Air & Vapor Control Layer as specified
- ② Air & Vapor Control Layer sealed with S-Wrap® Tape F (Applicable to polyethylene AXL membranes)
- ③ SikaTherm® insulation as specified
- ④ Mechanically fixed Sika Single Ply Membrane in accordance with Sika Limited Specification
- ⑤ Sika Sealing Cord
- ⑥ Self-adhered Sika Single Ply Membrane to upstands
- ⑦ Sika Single Ply Membrane cover strip
- ⑧ Hot Air Walls
- ⑨ Specified Sika Sealant



OPTIONAL FIXING USING SFT TUBE

Sika Single Ply Membrane Membrane Seam - Mechanically Fixed Upstand - Part Deck

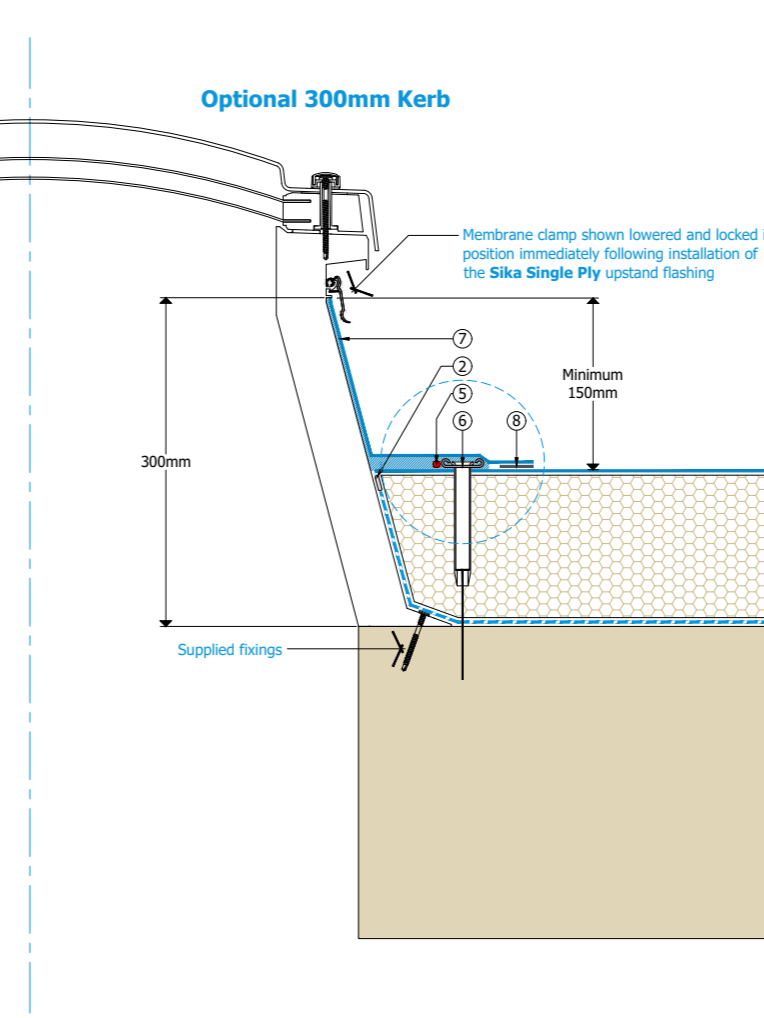
- ① S-Vap Air & Vapor Control Layer as specified
- ② Air & Vapor Control Layer sealed with S-Wrap® Tape F (Applicable to polyethylene AXL membranes)
- ③ SikaTherm® insulation as specified
- ④ Mechanically fixed Sika Single Ply Membrane in accordance with Sika Limited Specification
- ⑤ Sika Sealing Cord
- ⑥ Self-adhered Sika Single Ply Membrane to upstands
- ⑦ Hot Air Walls



OPTIONAL FIXING USING SFT TUBE

Sika Single Ply Membrane Membrane Seam - Mechanically Fixed Upstand - Horizontal

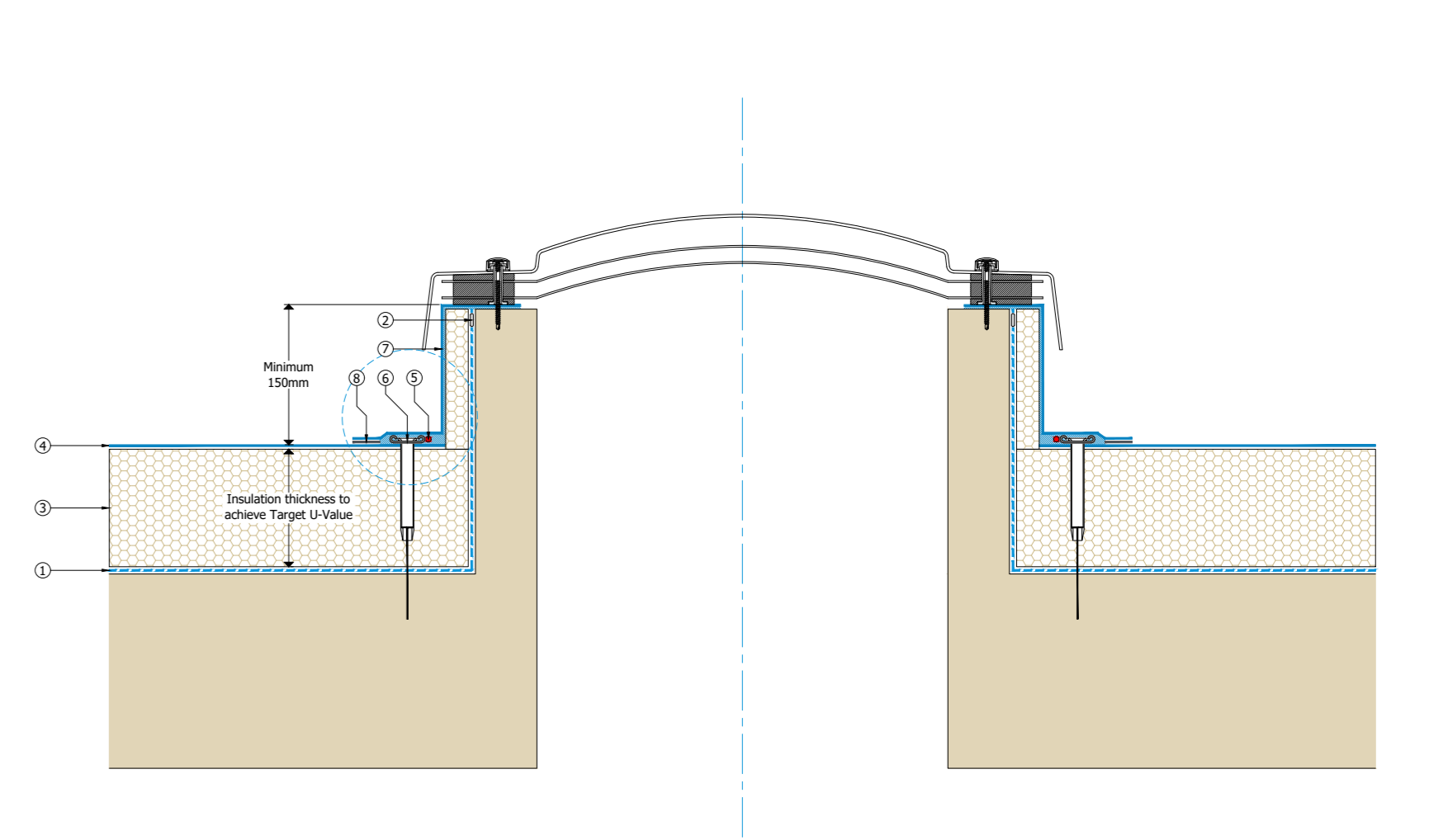
- ① S-Vap Air & Vapor Control Layer as specified
- ② Air & Vapor Control Layer sealed with S-Wrap® Tape F (Applicable to polyethylene AXL membranes)
- ③ SikaTherm® insulation as specified
- ④ Mechanically fixed Sika Single Ply Membrane in accordance with Sika Limited Specification
- ⑤ Sika Sealing Cord
- ⑥ Self-adhered Sika Single Ply Membrane to upstands
- ⑦ Hot Air Walls



OPTIONAL FIXING USING SFT TUBE

Sika Single Ply Membrane Membrane Seam - Mechanically Fixed Drainage - Substrate Light

- ① S-Vap Air & Vapor Control Layer as specified
- ② Air & Vapor Control Layer sealed with S-Wrap® Tape F (Applicable to polyethylene AXL membranes)
- ③ SikaTherm® insulation as specified
- ④ Mechanically fixed Sika Single Ply Membrane to upstands in accordance with Sika Limited Specification
- ⑤ Sika Sealing Cord
- ⑥ Self-adhered Sika Single Ply Membrane to upstands
- ⑦ Hot Air Walls



OPTIONAL FIXING USING SFT TUBE

Sika Single Ply Membrane Membrane Seam - Mechanically Fixed Drainage - Substrate Light

INFORMATION	
Drawing Title:	Sika Single Ply Membrane Mechanically Fixed Selection of Standard Details
Project No:	NTS
Drawn:	GRW
Check/Issue:	GRW
Issue Date:	24 April 24
Scale:	1:10
Author:	GRW
Check:	GRW
Issue:	GRW
Drawn:	GRW
Check:	GRW
Issue:	GRW

Building Trust logo and other project information.