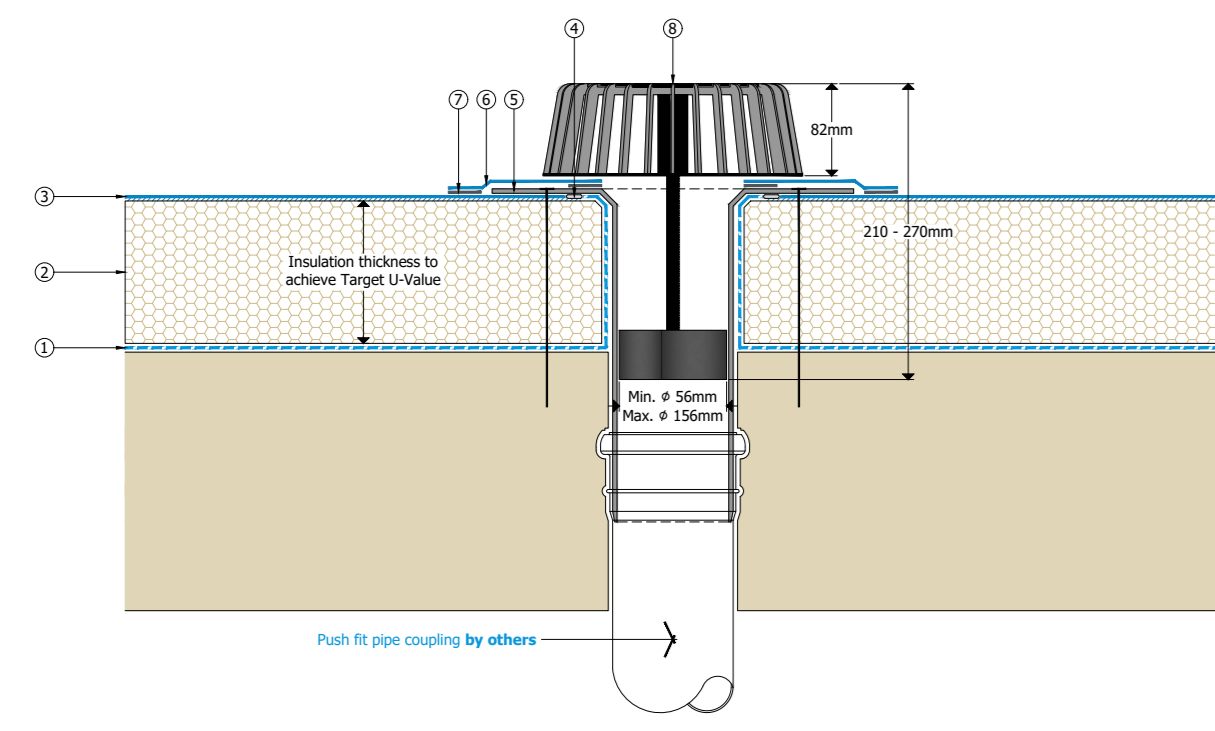
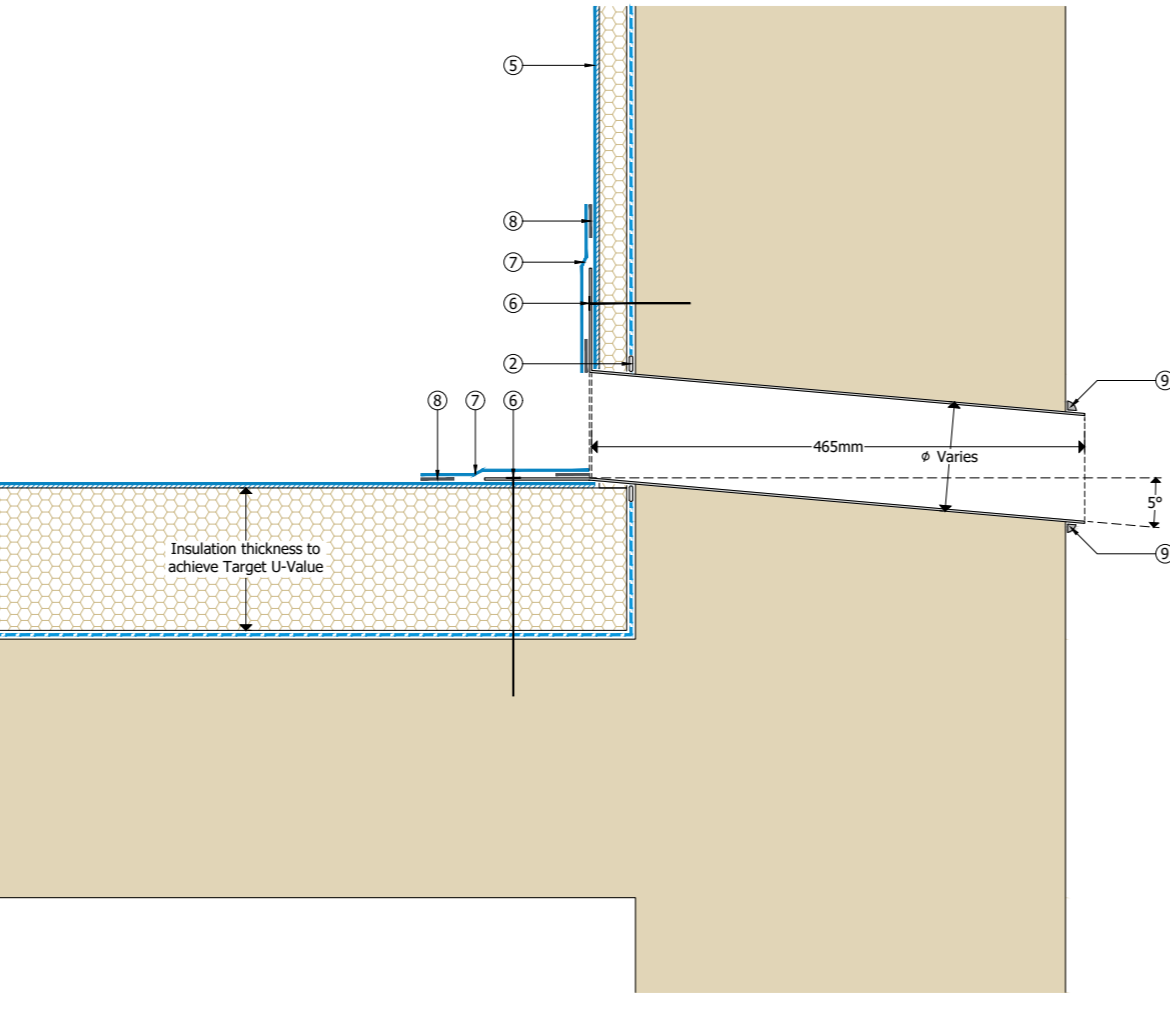


- ① S-Vapour Air & Vapour Control Layer
- ② Air & Vapour Control Layer sealed with S-Vapour AVCL Tape (applicable to polyethylene AVCL membranes)
- ③ Skiltherm® insulation
- ④ Adhered Sika Single Ply Membrane
- ⑤ Adhered Sika Single Ply Membrane
- ⑥ Adhered Sika Single Ply Membrane
- ⑦ Adhered Sika Single Ply Membrane to upstands
- ⑧ Mechanically fixed Skiltherm® Drain (membrane outlet - refer to Product Data Sheet for options)
- ⑨ Sika Single Ply Membrane cover strip
- ⑩ Hot Air Waste
- ⑪ Skiltherm® Landguard



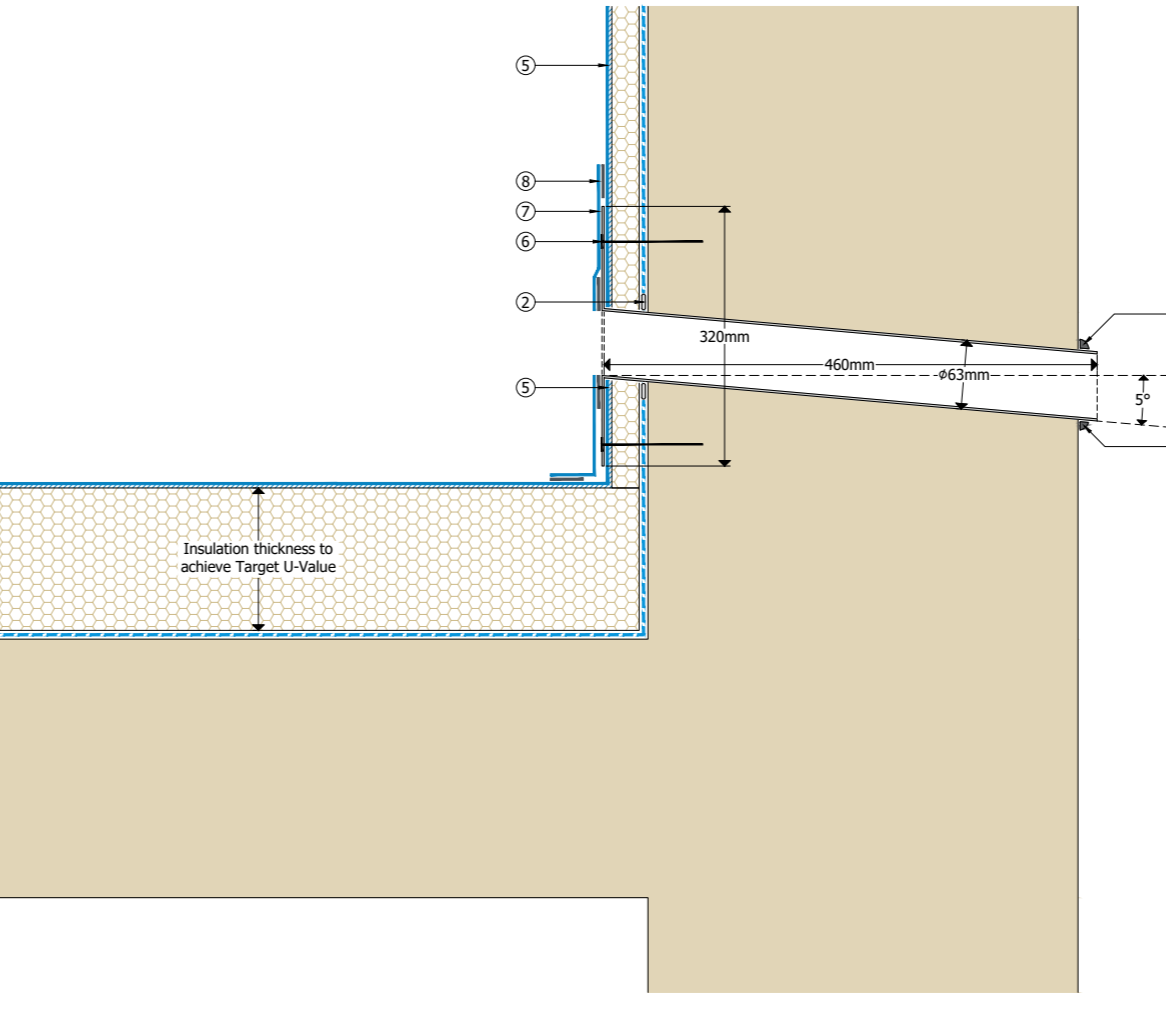
Sika Single Ply Membrane Membrane Warm - Fully Adhered Drainage - Internal Vertical Outlet

- ① S-Vapour Air & Vapour Control Layer
- ② Air & Vapour Control Layer sealed with S-Vapour AVCL Tape (applicable to polyethylene AVCL membranes)
- ③ Skiltherm® insulation
- ④ Adhered Sika Single Ply Membrane
- ⑤ Adhered Sika Single Ply Membrane to upstands
- ⑥ Mechanically fixed Skiltherm® Drain (membrane outlet - refer to Product Data Sheet for options)
- ⑦ Sika Single Ply Membrane cover strip
- ⑧ Hot Air Waste
- ⑨ Skiltherm®-255 Facade outlet



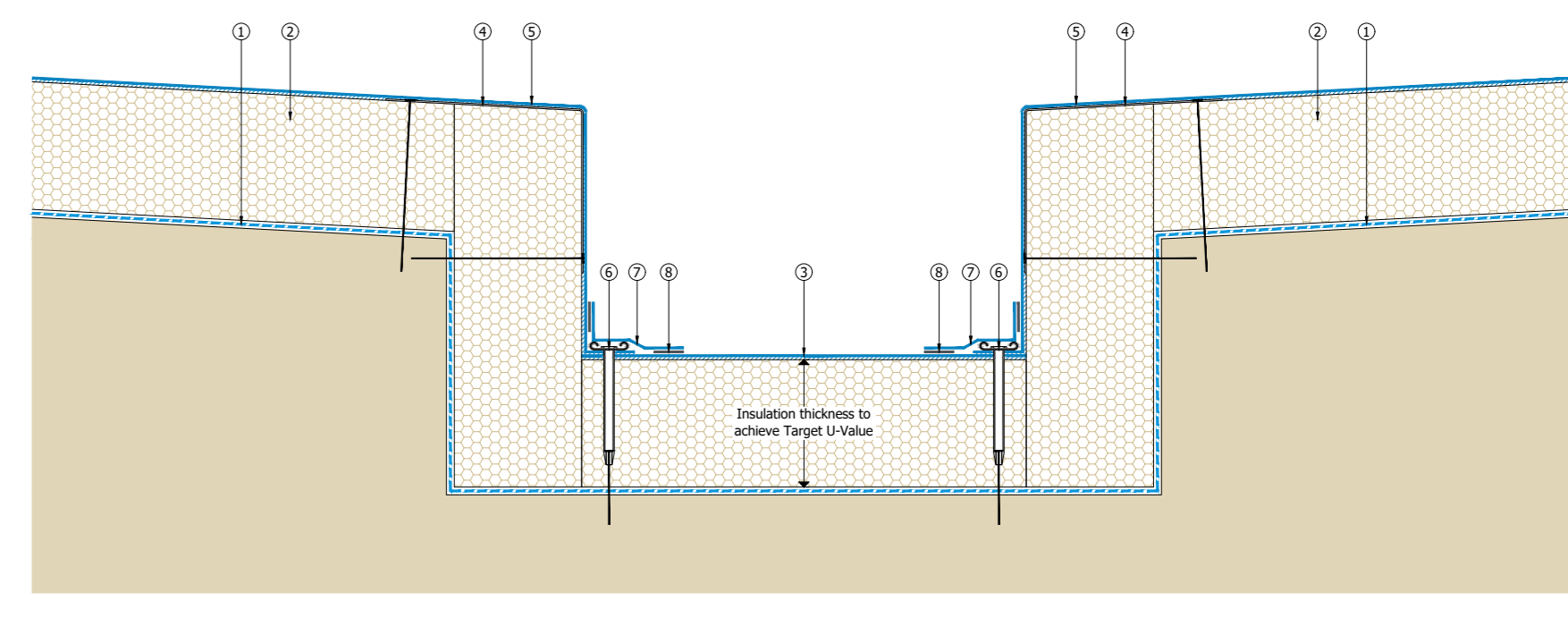
Sika Single Ply Membrane Membrane Warm - Fully Adhered Drainage - Horizontal Over-Curtain

- ① S-Vapour Air & Vapour Control Layer
- ② Air & Vapour Control Layer sealed with S-Vapour AVCL Tape (applicable to polyethylene AVCL membranes)
- ③ Skiltherm® insulation
- ④ Adhered Sika Single Ply Membrane
- ⑤ Adhered Sika Single Ply Membrane to upstands
- ⑥ Mechanically fixed Skiltherm® Drain (membrane outlet - refer to Product Data Sheet for options)
- ⑦ Sika Single Ply Membrane cover strip
- ⑧ Hot Air Waste
- ⑨ Skiltherm®-255 Facade outlet



Sika Single Ply Membrane Membrane Warm - Fully Adhered Drainage - Overflow

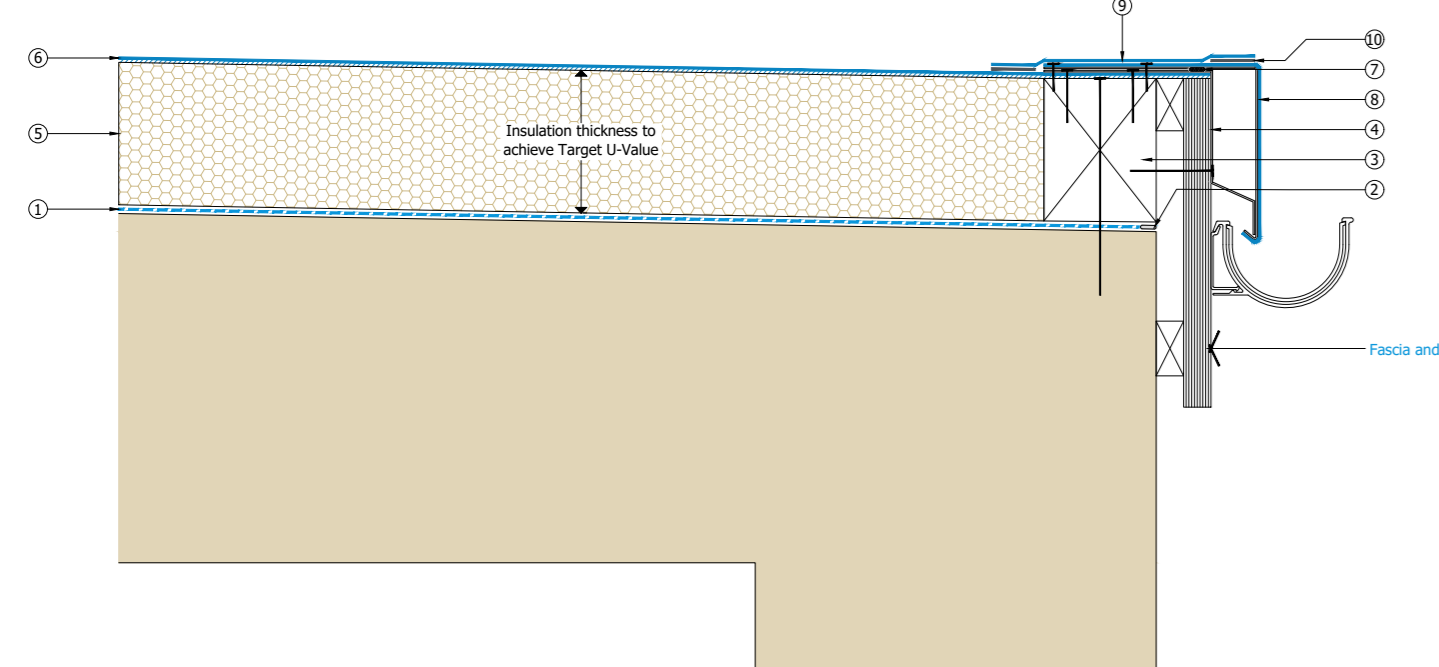
- ① S-Vapour Air & Vapour Control Layer
- ② Air & Vapour Control Layer sealed with S-Vapour AVCL Tape (applicable to polyethylene AVCL membranes)
- ③ Skiltherm® insulation
- ④ Adhered Sika Single Ply Membrane for joints only
- ⑤ Mechanically fixed Galvalume Steel Hard Edge
- ⑥ Adhered Sika Single Ply Membrane Nail Joint and gutter railing
- ⑦ Mechanically fixed Skiltherm® Feed Strip
- ⑧ Adhered Sika Single Ply Membrane to upstands
- ⑨ Hot Air Waste



Sika Single Ply Membrane Membrane Warm - Fully Adhered Drainage - Internal Outlet

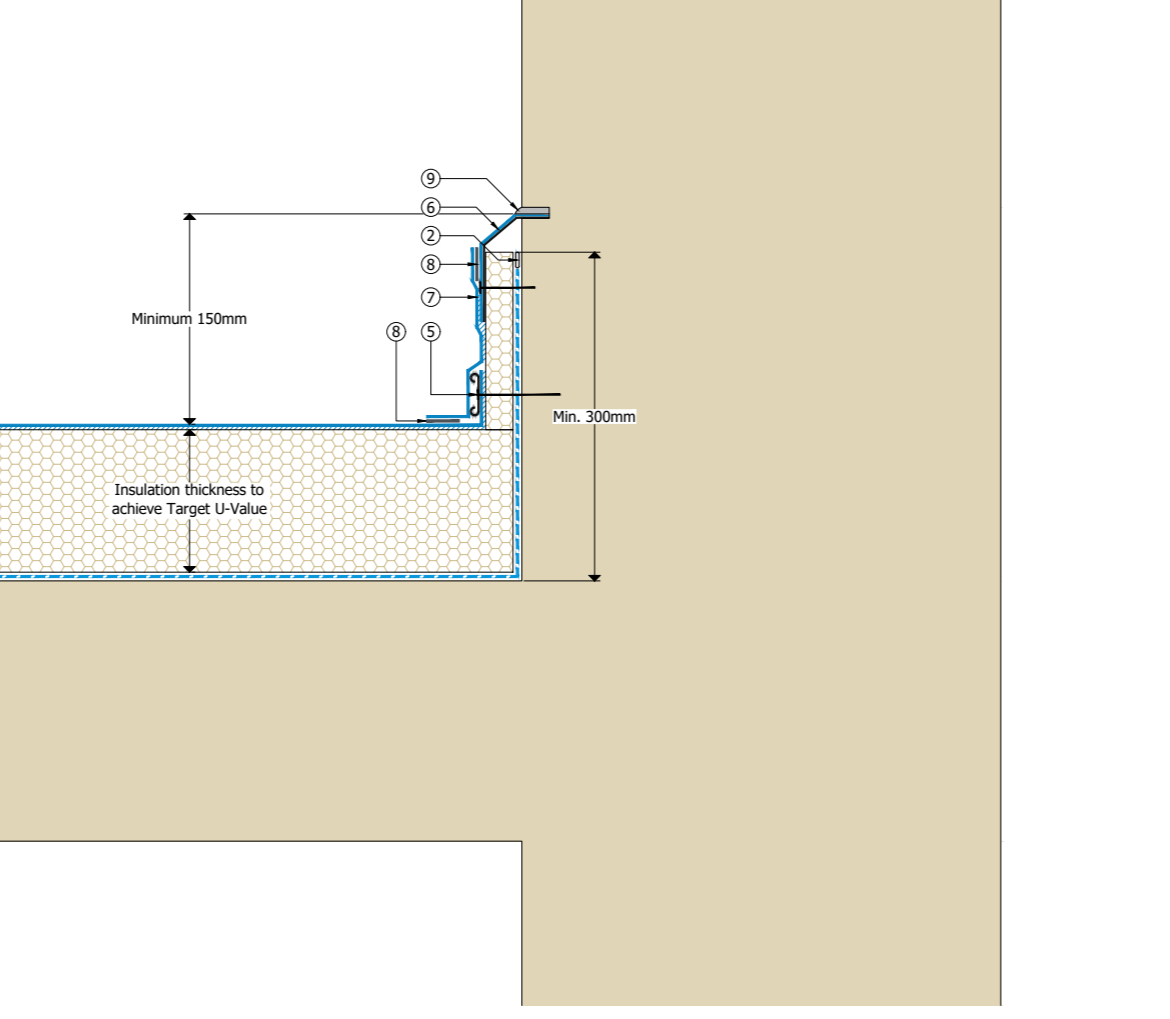
- ① S-Vapour Air & Vapour Control Layer
- ② Air & Vapour Control Layer sealed with S-Vapour AVCL Tape (applicable to polyethylene AVCL membranes)
- ③ Mechanically fixed Tensarated Timber Hard Edge
- ④ Mechanically fixed Galvalume Strengthening Chalk
- ⑤ Skiltherm® insulation
- ⑥ Adhered Sika Single Ply Membrane
- ⑦ Self-adhesive Flashing Strip
- ⑧ Mechanically fixed Sika Metal Roof Trim
- ⑨ Sika Single Ply Membrane cover strip
- ⑩ Hot Air Waste

**Strengthening Chalk Specification:**  
**Material:** Galvalume steel not G16000.  
**Dimensions:** 100mm wide with 50mm lip to match the top leg of the Sika Metal Roof Trim.  
**Design:** Trim should be fabricated to per the detail below.  
**Strengthening Chalk Installation:**  
**Location:** Chalks to be installed at every Sika Metal Roof Trim joint and max every 500mm between the joints.  
**Attachment:** Chalks to be attached to the roof structure using a minimum 20kg staggered proprietary fasteners. Where applicable the vertical leg of the chalk should also be fixed using a minimum 20kg proprietary fasteners. Fasteners for a continuous chalk should be located in the same position as for individual chalks.  
**General:** The sealing strip should be installed after the installation of the chalks to prevent wind uplift of the perimeter edge.



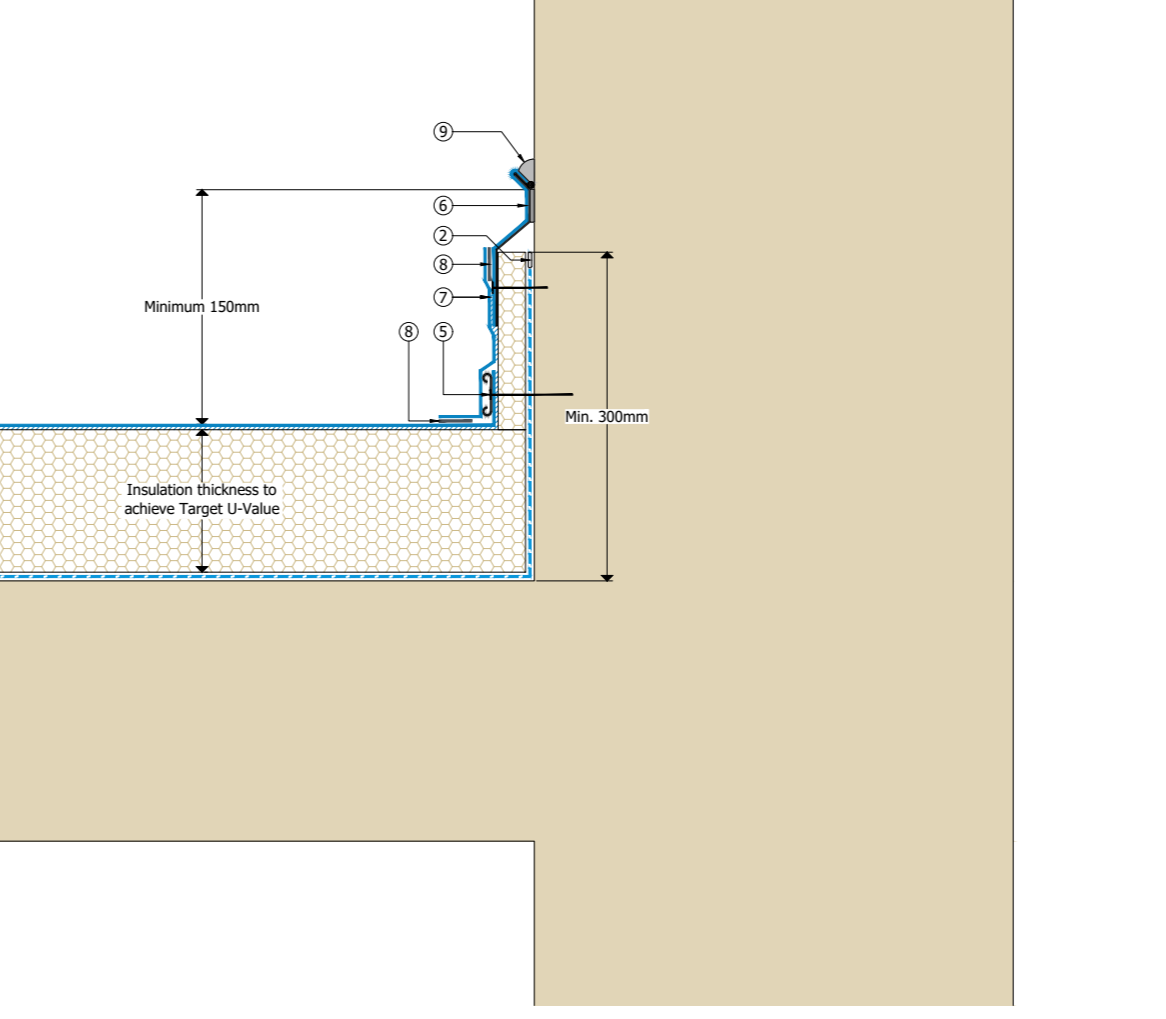
Sika Single Ply Membrane Membrane Warm - Fully Adhered Drainage - Dig Edge to External Outlet

- ① S-Vapour Air & Vapour Control Layer
- ② Air & Vapour Control Layer sealed with S-Vapour AVCL Tape (applicable to polyethylene AVCL membranes)
- ③ Skiltherm® insulation
- ④ Adhered Sika Single Ply Membrane
- ⑤ Adhered Sika Single Ply Membrane to upstands
- ⑥ Mechanically fixed Skiltherm® Feed Strip
- ⑦ Mechanically fixed Sika Metal Roof Trim
- ⑧ Adhered Sika Single Ply Membrane to upstands
- ⑨ Hot Air Waste
- ⑩ Skiltherm®-255 Facade outlet



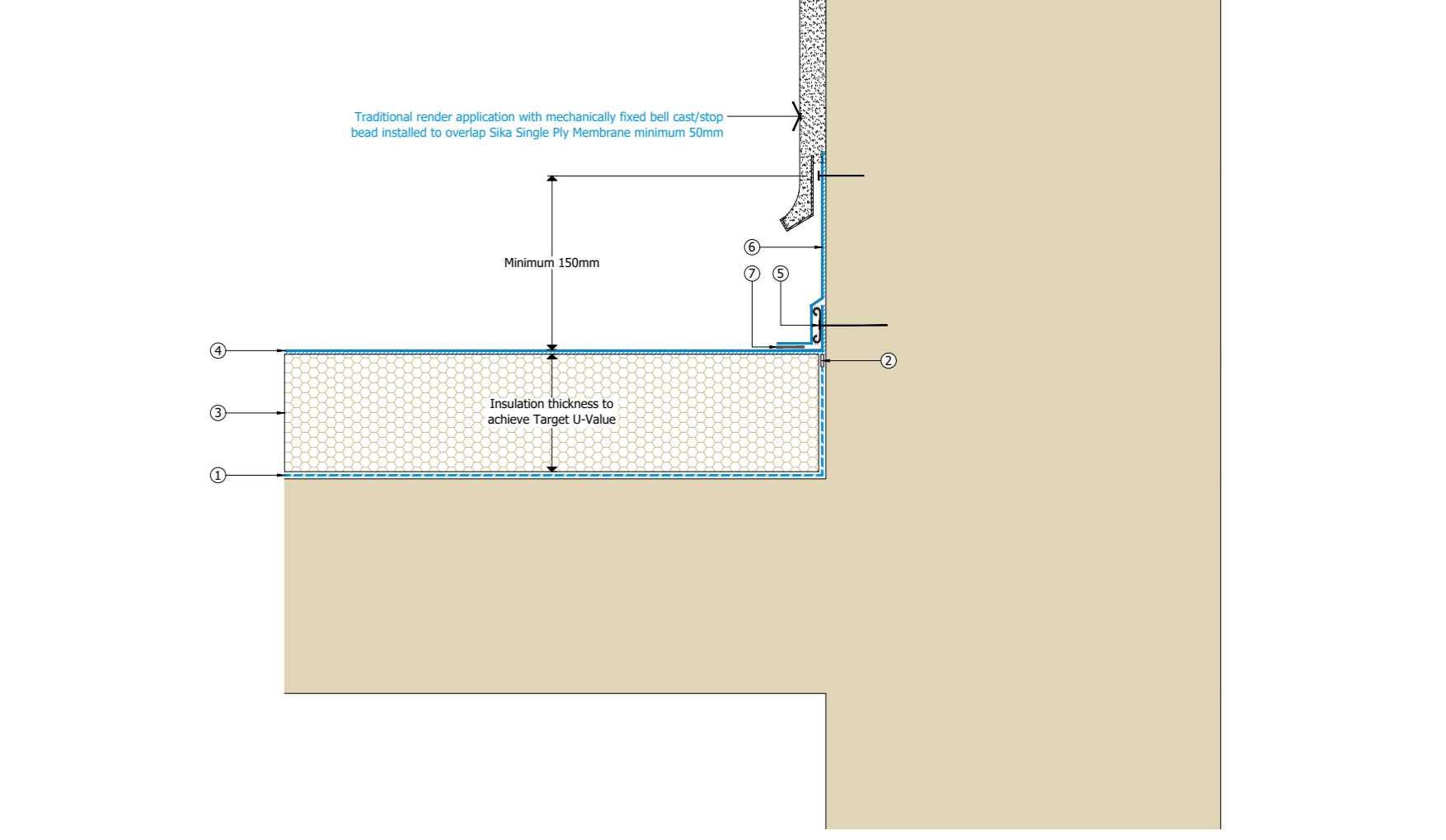
Sika Single Ply Membrane Membrane Warm - Fully Adhered Upstand - Chalk

- ① S-Vapour Air & Vapour Control Layer
- ② Air & Vapour Control Layer sealed with S-Vapour AVCL Tape (applicable to polyethylene AVCL membranes)
- ③ Skiltherm® insulation
- ④ Adhered Sika Single Ply Membrane
- ⑤ Adhered Sika Single Ply Membrane to upstands
- ⑥ Mechanically fixed Skiltherm® Feed Strip
- ⑦ Sika Metal Roof Trim (initially bonded with Skiltherm® AT Universal Adhesive in strict accordance with Product Data Sheet, mechanically fixed counterflashing at lower position)
- ⑧ Adhered Sika Single Ply Membrane to upstands
- ⑨ Hot Air Waste
- ⑩ Skiltherm®-255 Facade outlet



Sika Single Ply Membrane Membrane Warm - Fully Adhered Upstand - Counter Flashing

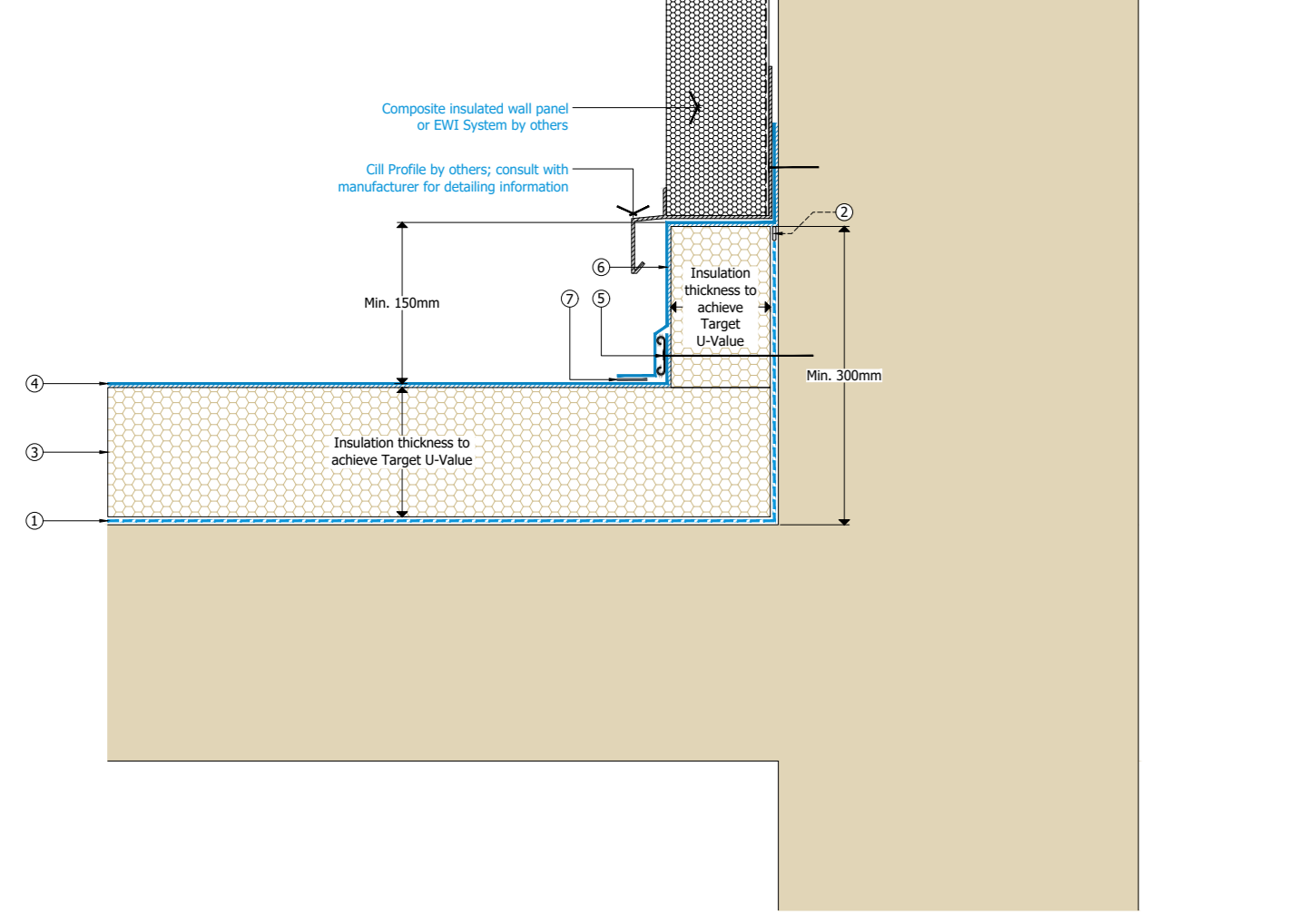
- ① S-Vapour Air & Vapour Control Layer
- ② Air & Vapour Control Layer sealed with S-Vapour AVCL Tape (applicable to polyethylene AVCL membranes)
- ③ Skiltherm® insulation
- ④ Adhered Sika Single Ply Membrane
- ⑤ Adhered Sika Single Ply Membrane to upstands
- ⑥ Mechanically fixed Skiltherm® Feed Strip
- ⑦ Hot Air Waste



Sika Single Ply Membrane Membrane Warm - Fully Adhered Upstand - Horizontal

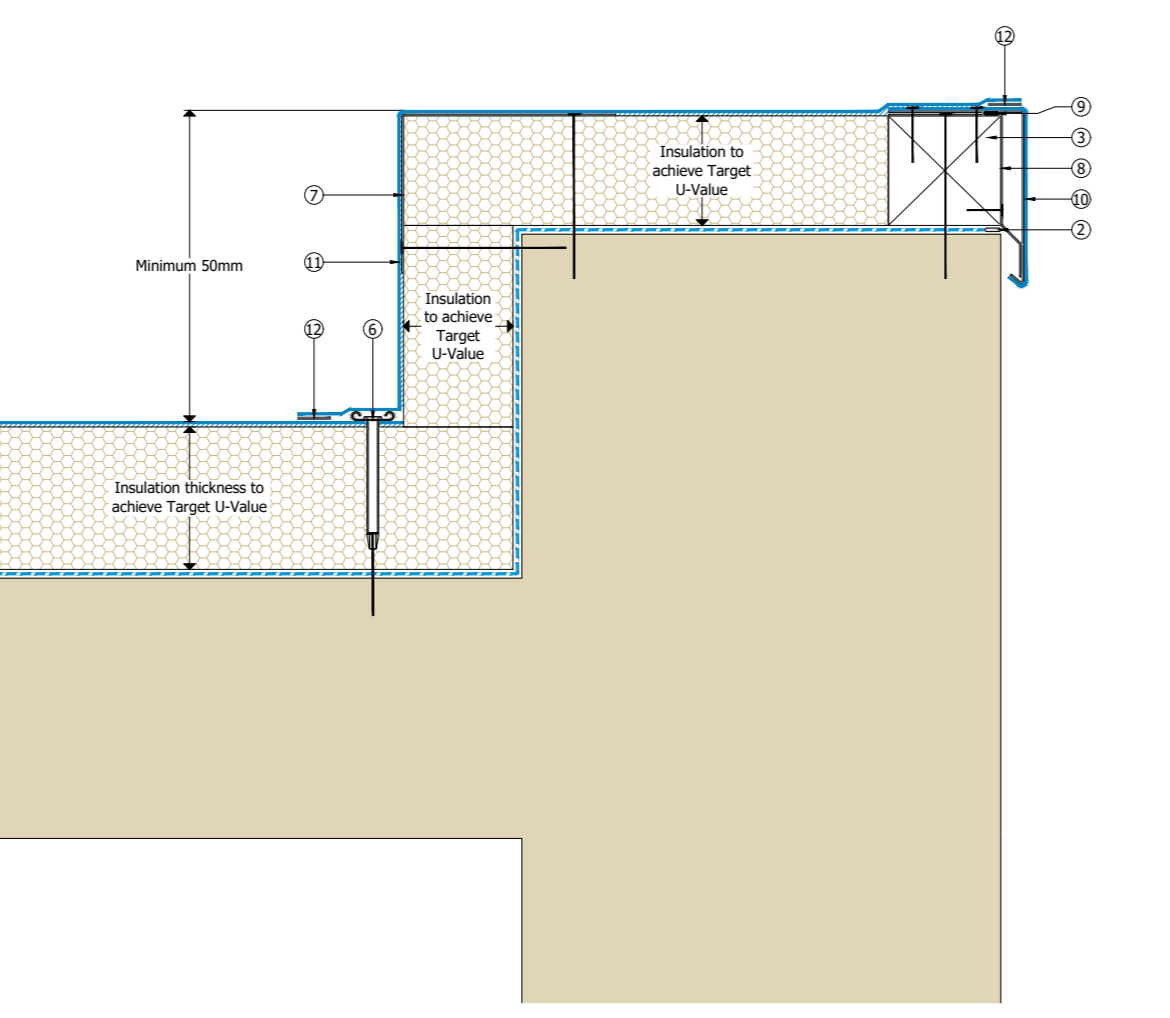
- ① S-Vapour Air & Vapour Control Layer
- ② Air & Vapour Control Layer sealed with S-Vapour AVCL Tape (applicable to polyethylene AVCL membranes)
- ③ Mechanically fixed Tensarated Timber Hard Edge
- ④ Mechanically fixed Galvalume Strengthening Chalk
- ⑤ Skiltherm® insulation
- ⑥ Adhered Sika Single Ply Membrane
- ⑦ Self-adhesive Flashing Strip
- ⑧ Mechanically fixed Sika Metal Roof Trim
- ⑨ Sika Single Ply Membrane cover strip
- ⑩ Hot Air Waste

**Strengthening Chalk Specification:**  
**Material:** Galvalume steel not G16000.  
**Dimensions:** 100mm wide with 50mm lip to match the top leg of the Sika Metal Roof Trim.  
**Design:** Trim should be fabricated to per the detail below.  
**Strengthening Chalk Installation:**  
**Location:** Chalks to be installed at every Sika Metal Roof Trim joint and max every 500mm between the joints.  
**Attachment:** Chalks to be attached to the roof structure using a minimum 20kg staggered proprietary fasteners. Where applicable the vertical leg of the chalk should also be fixed using a minimum 20kg proprietary fasteners. Fasteners for a continuous chalk should be located in the same position as for individual chalks.  
**General:** The sealing strip should be installed after the installation of the chalks to prevent wind uplift of the perimeter edge.



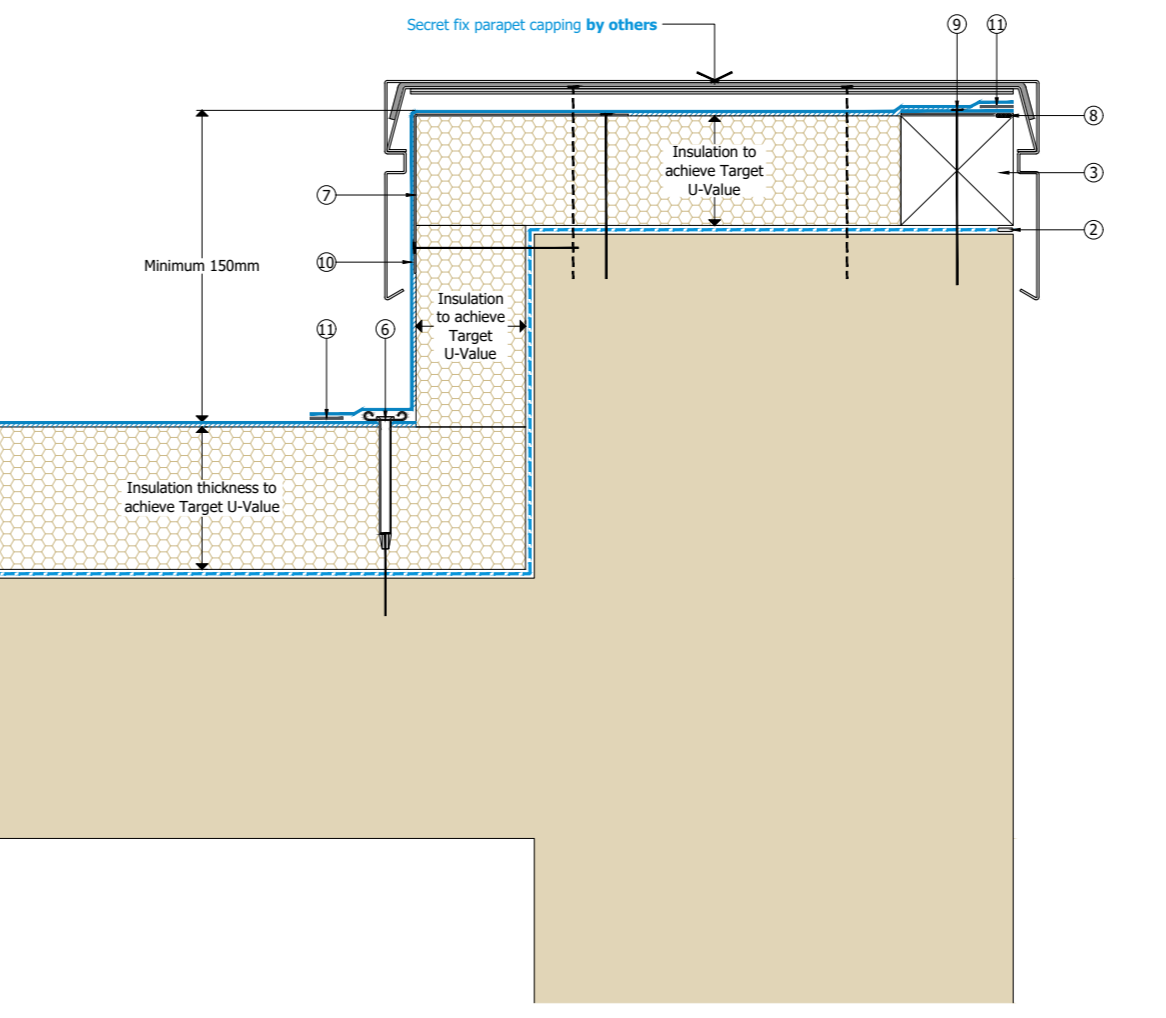
Sika Single Ply Membrane Membrane Warm - Fully Adhered Drainage - Chalking

- ① S-Vapour Air & Vapour Control Layer
- ② Air & Vapour Control Layer sealed with S-Vapour AVCL Tape (applicable to polyethylene AVCL membranes)
- ③ Mechanically fixed Tensarated Timber Hard Edge
- ④ Skiltherm® insulation
- ⑤ Adhered Sika Single Ply Membrane
- ⑥ Mechanically fixed Skiltherm® Feed Strip
- ⑦ Mechanically fixed Galvalume Strengthening Chalk
- ⑧ Self-adhesive Flashing Strip
- ⑨ Mechanically fixed Sika Metal Roof Trim
- ⑩ Adhered Sika Single Ply Membrane to upstands
- ⑪ Hot Air Waste



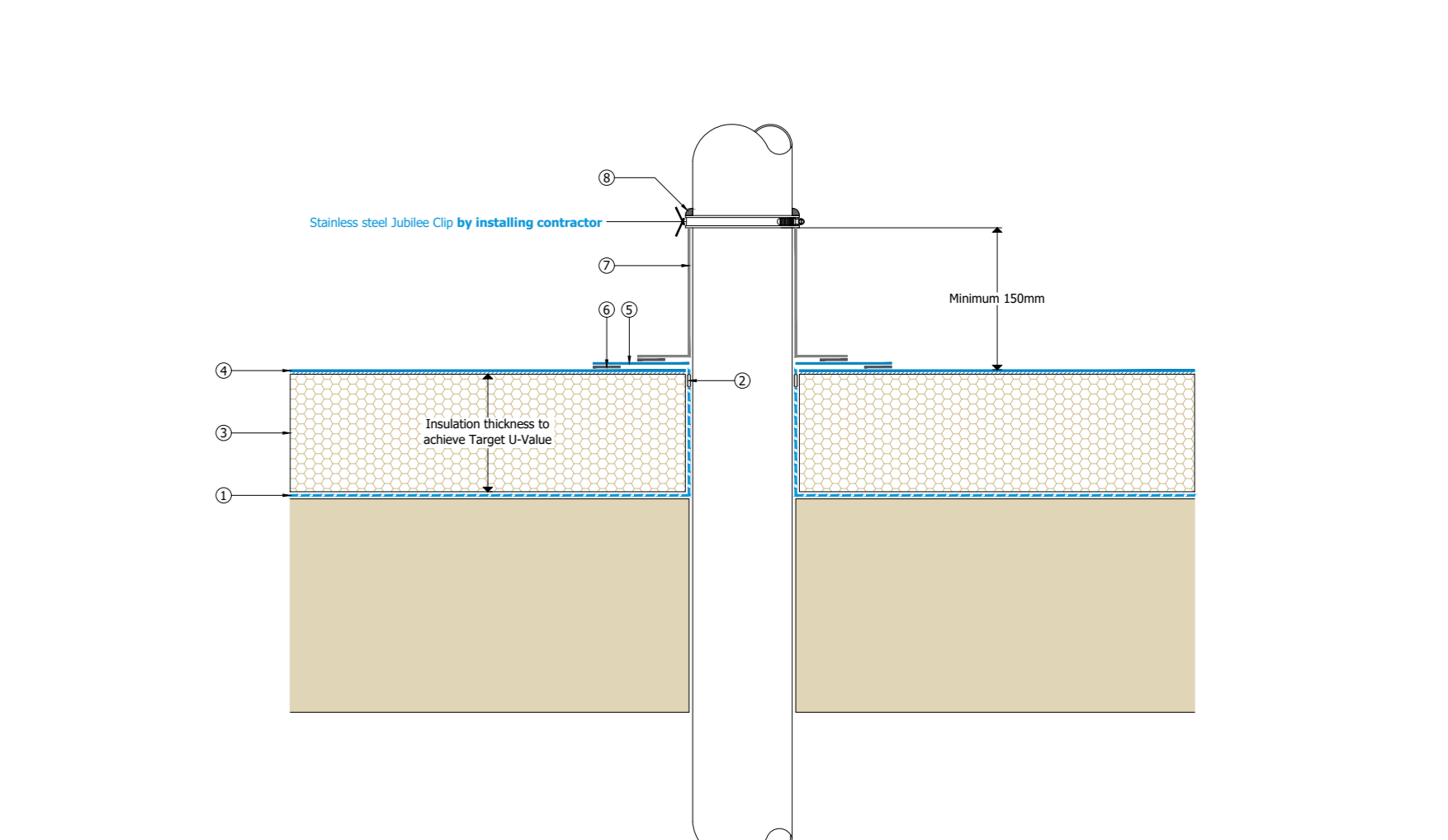
Sika Single Ply Membrane Membrane Warm - Fully Adhered Drainage - Kerb

- ① S-Vapour Air & Vapour Control Layer
- ② Air & Vapour Control Layer sealed with S-Vapour AVCL Tape (applicable to polyethylene AVCL membranes)
- ③ Skiltherm® insulation
- ④ Adhered Sika Single Ply Membrane
- ⑤ Adhered Sika Single Ply Membrane to upstands
- ⑥ Mechanically fixed Skiltherm® Feed Strip
- ⑦ Mechanically fixed Galvalume Steel Hard Edge
- ⑧ Self-adhesive Flashing Strip
- ⑨ Mechanically fixed Sika Metal Roof Trim
- ⑩ Hot Air Waste



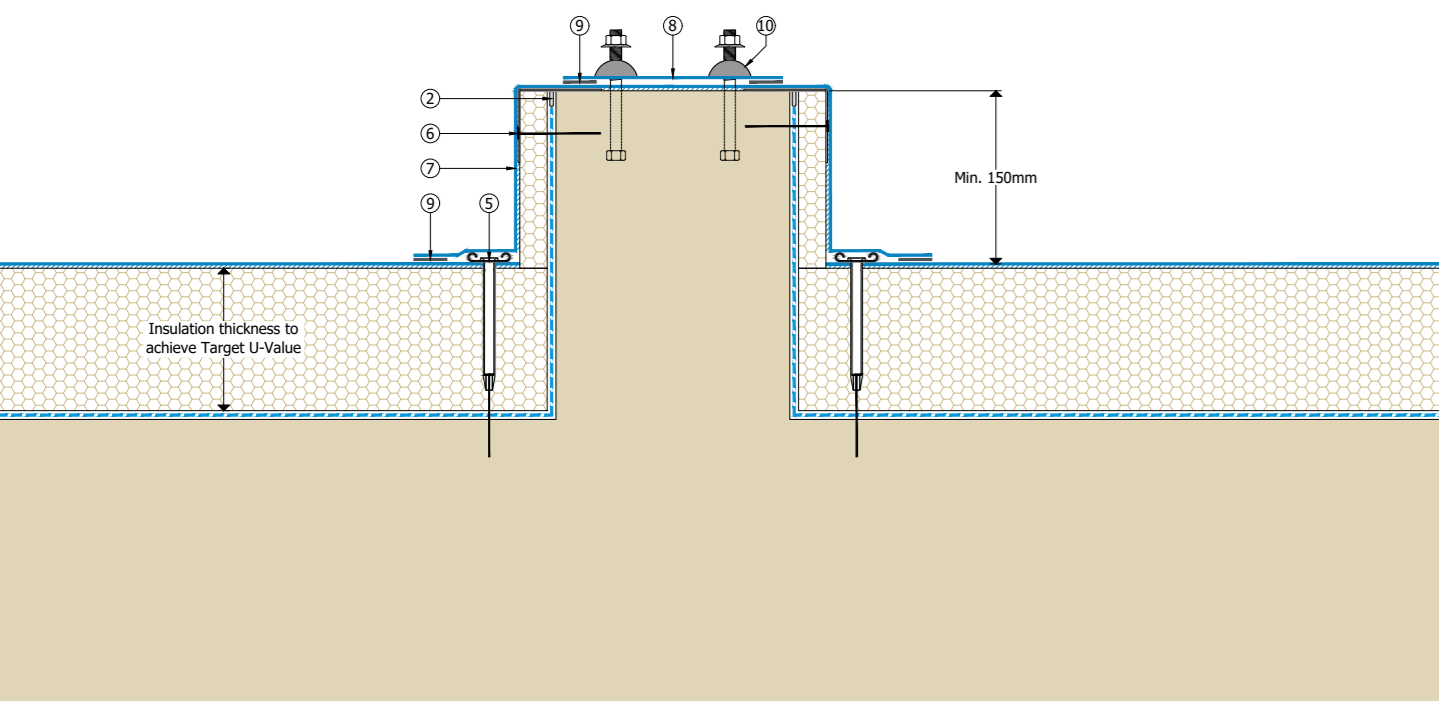
Sika Single Ply Membrane Membrane Warm - Fully Adhered Drainage - Counter

- ① S-Vapour Air & Vapour Control Layer
- ② Air & Vapour Control Layer sealed with S-Vapour AVCL Tape (applicable to polyethylene AVCL membranes)
- ③ Skiltherm® insulation
- ④ Adhered Sika Single Ply Membrane
- ⑤ Adhered Sika Single Ply Membrane to upstands
- ⑥ Mechanically fixed Skiltherm® Feed Strip
- ⑦ Hot Air Waste



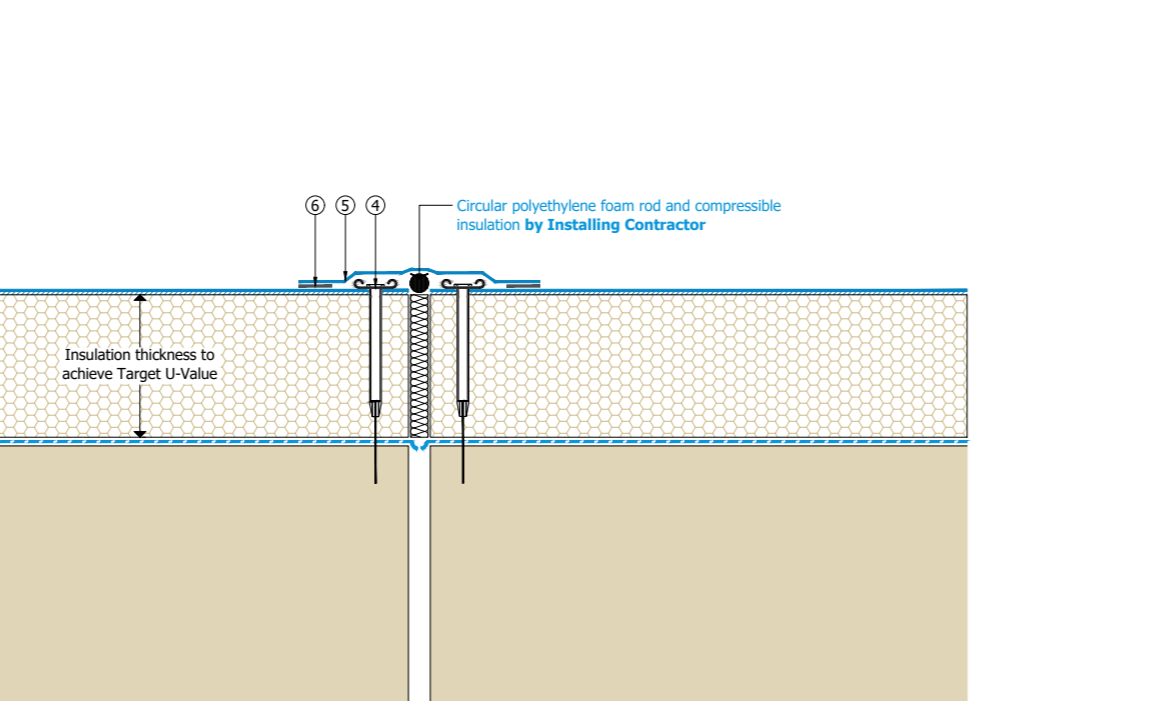
Sika Single Ply Membrane Membrane Warm - Fully Adhered Drainage - Horizontal

- ① S-Vapour Air & Vapour Control Layer
- ② Air & Vapour Control Layer sealed with S-Vapour AVCL Tape (applicable to polyethylene AVCL membranes)
- ③ Skiltherm® insulation
- ④ Adhered Sika Single Ply Membrane
- ⑤ Adhered Sika Single Ply Membrane to upstands
- ⑥ Mechanically fixed Skiltherm® Feed Strip
- ⑦ Hot Air Waste



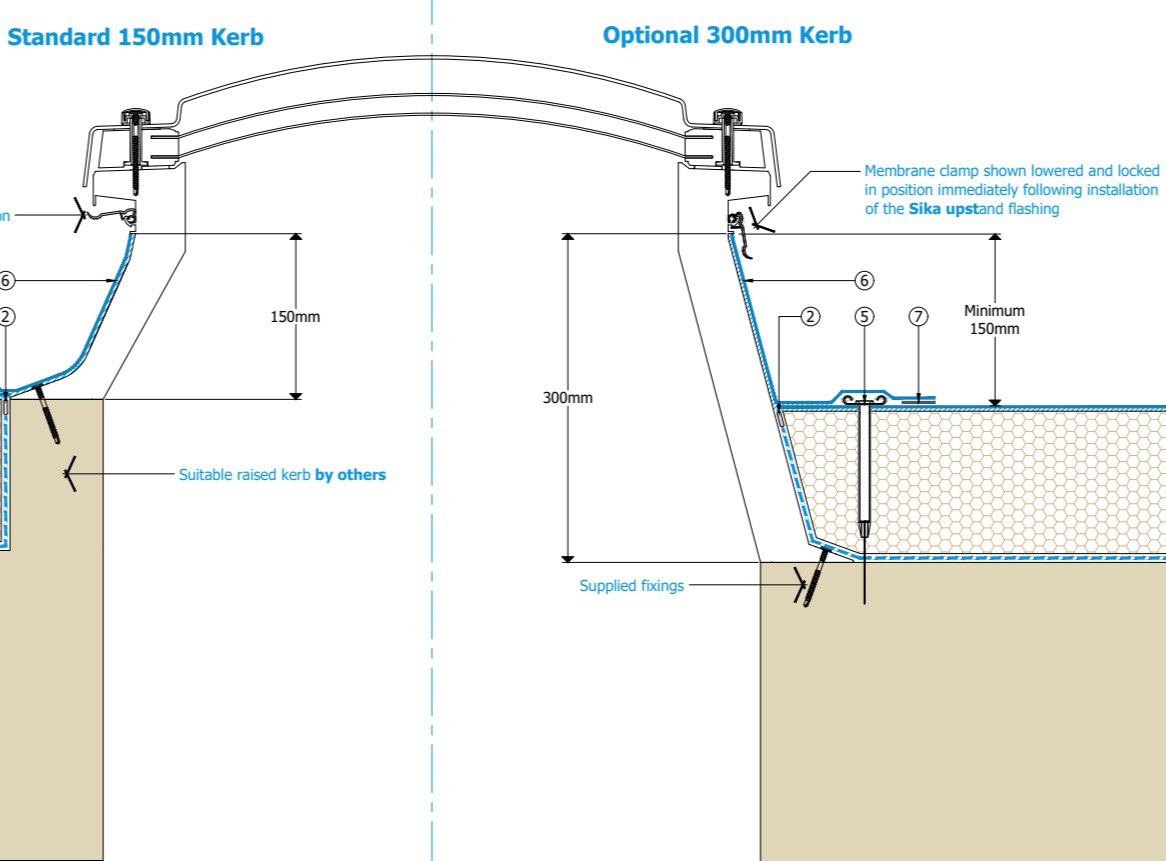
Sika Single Ply Membrane Membrane Warm - Fully Adhered Drainage - Part Flash

- ① S-Vapour Air & Vapour Control Layer
- ② Air & Vapour Control Layer sealed with S-Vapour AVCL Tape (applicable to polyethylene AVCL membranes)
- ③ Skiltherm® insulation
- ④ Adhered Sika Single Ply Membrane
- ⑤ Adhered Sika Single Ply Membrane to upstands
- ⑥ Hot Air Waste



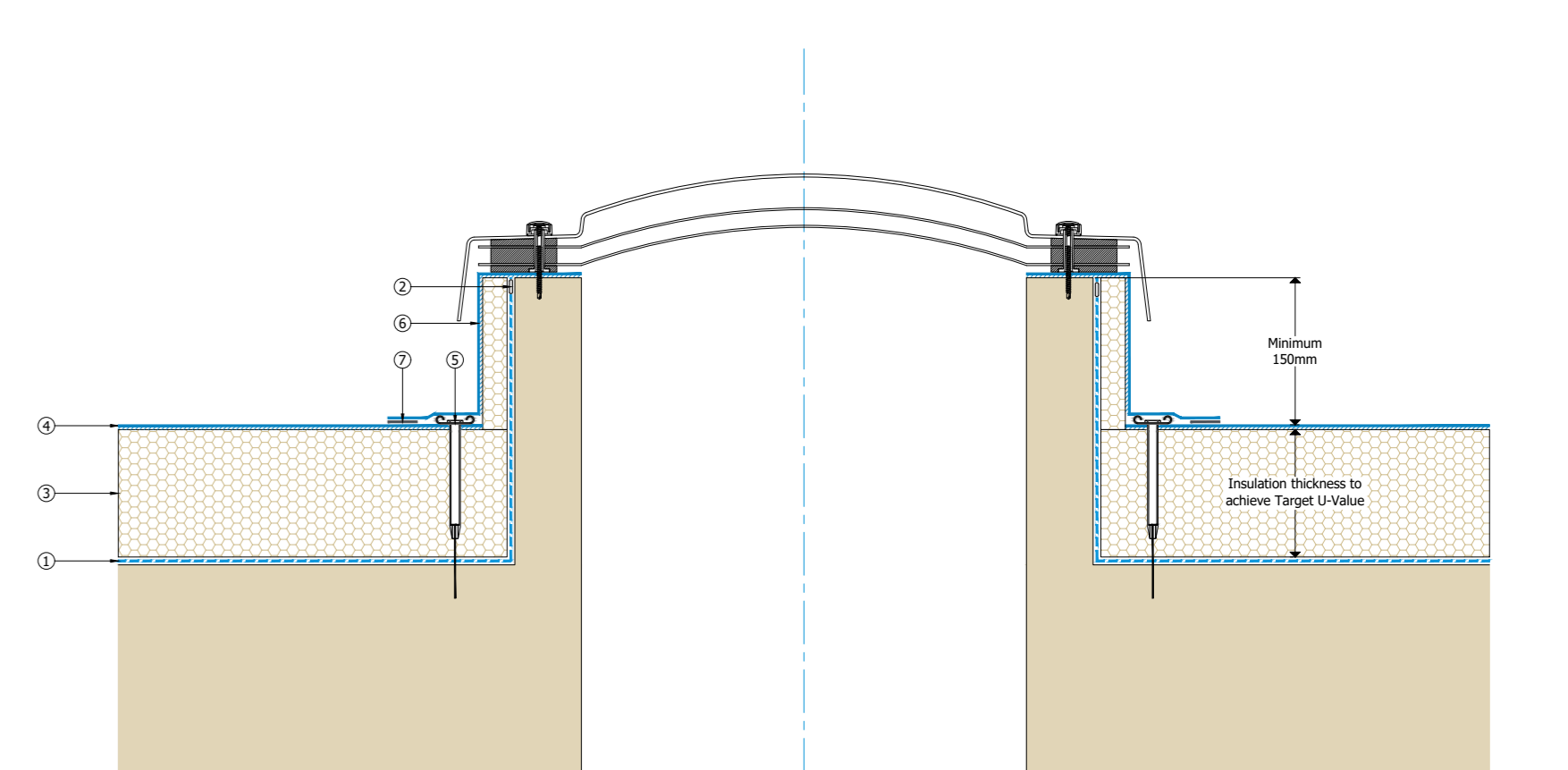
Sika Single Ply Membrane Membrane Warm - Fully Adhered Drainage - Horizontal

- ① S-Vapour Air & Vapour Control Layer
- ② Air & Vapour Control Layer sealed with S-Vapour AVCL Tape (applicable to polyethylene AVCL membranes)
- ③ Skiltherm® insulation
- ④ Adhered Sika Single Ply Membrane
- ⑤ Adhered Sika Single Ply Membrane to upstands
- ⑥ Hot Air Waste



Sika Single Ply Membrane Membrane Warm - Fully Adhered Drainage - Standard Light

- ① S-Vapour Air & Vapour Control Layer
- ② Air & Vapour Control Layer sealed with S-Vapour AVCL Tape (applicable to polyethylene AVCL membranes)
- ③ Skiltherm® insulation
- ④ Adhered Sika Single Ply Membrane
- ⑤ Adhered Sika Single Ply Membrane to upstands
- ⑥ Hot Air Waste



Sika Single Ply Membrane Membrane Warm - Fully Adhered Drainage - Standard Light

**INFORMATION**

Project No: [ ]  
 Project Name: [ ]  
 Date: [ ]

Drawn: [ ]  
 Checked: [ ]  
 Approved: [ ]

Scale: 1:10  
 Date: [ ]

**BUILDING TRUST**