

## PRODUCT DATA SHEET

# Sarnafil® T Scupper square

Prefabricated FPO roof drain

### PRODUCT DESCRIPTION

Sarnafil® T Scupper square is a prefabricated FPO (PP) rainwater outlet through the parapet on flat roofs. It is used with Sarnafil® T/AT roofing membranes which are heat-welded onto the baseplate.

### USES

The Product is used as a:

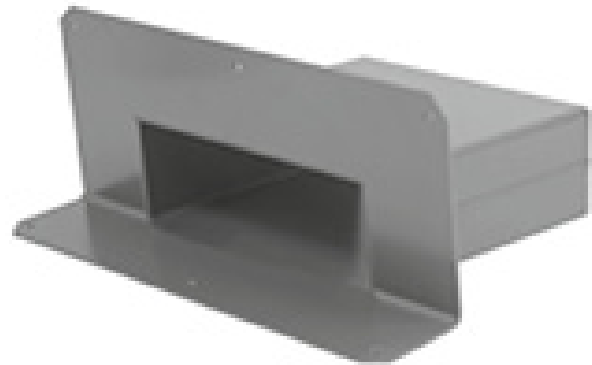
- Rainwater outlet for use with Sarnafil® T/AT roofing membranes

Please note:

- The Product may only be used by experienced professionals.
- The Product must not be used in regions with average monthly minimum temperatures lower than -50 °C. Permanent ambient temperature during use must not be higher than +50 °C.

### CHARACTERISTICS / ADVANTAGES

- Very good resistance to permanent UV exposure
- Membrane can be welded directly to the base plate
- Easy to apply
- Hot air weldable
- **IMPORTANT** Requires named reference to an established recycling programme for post-consumer FPO that is easily accessible for > 65 % of customers and that feeds post-consumer recycling material to production of new products. Delete if no such recycling programme is available. Recyclable through [named] recycling program



### PRODUCT INFORMATION

#### Chemical Base

Polypropylene (PP)

#### Packaging

Depending on the order quantity and product size, the products are packaged on pallets or in cartons  
Refer to the current price list for available packaging variations.

<b>Shelf Life</b>	5 years from date of production					
<b>Storage Conditions</b>	The Product must be stored in original, unopened and undamaged sealed packaging in dry conditions at temperatures between +5 °C and +30 °C. Always refer to packaging.					
<b>Appearance / Colour</b>	Surface	Smooth				
	Colour	Colour: Beige (Nearest to RAL 7032)				
<b>Dimensions</b>	<b>Spigot outside</b>	<b>Spigot length</b>	<b>Spigot inclination</b>	<b>Vertical base plate</b>	<b>Horizontal base plate</b>	
	128 mm × 68 mm	300 mm 500 mm 600 mm	5°	320 mm × 160 mm	320 mm × 100 mm	
	188 mm × 88 mm	300 mm 500 mm 600 mm	5°	380 mm × 180 mm	380 mm × 100 mm	
	308 mm × 88 mm	300 mm 600 mm	5°	500 mm × 180 mm	500 mm × 100 mm	
	308 mm × 108 mm	300 mm 600 mm	5°	500 mm × 200 mm	500 mm × 100 mm	
	508 mm × 108 mm	300 mm 600 mm	5°	700 mm × 200 mm	700 mm × 100 mm	
	758 mm × 108 mm	300 mm 600 mm	5°	950 mm × 200 mm	950 mm × 100 mm	
	1008 mm × 108 mm	300 mm 600 mm	5°	1200 mm × 200 mm	1200 mm × 100 mm	
	<b>Thickness</b>	4 mm				

## SYSTEM INFORMATION

## TECHNICAL INFORMATION

<b>Flow rate</b>	<b>Spigot inside</b>	<b>35 mm height</b>	<b>45 mm height</b>	<b>55 mm height</b>	<b>65 mm height</b>
	120 mm × 60 mm	1.30 L/s	1.90 L/s	2.70 L/s	3.50 L/s
	180 mm × 80 mm	1.90 L/s	2.80 L/s	3.80 L/s	5.00 L/s
	300 mm × 80 mm	3.00 L/s	4.40 L/s	6.00 L/s	7.80 L/s
	300 mm × 100 mm	3.00 L/s	4.40 L/s	6.00 L/s	7.80 L/s
	500 mm × 100 mm	5.50 L/s	7.90 L/s	10.50 L/s	13.40 L/s
	750 mm × 100 mm	7.50 L/s	11.00 L/s	14.90 L/s	19.20 L/s
	1000 mm × 100 mm	12.60 L/s	17.70 L/s	23.40 L/s	29.40 L/s

## APPLICATION INFORMATION

<b>Ambient Air Temperature</b>	Maximum	+60°C
	Minimum	-20°C

## VALUE BASE

All technical data stated in this Product Data Sheet are based on laboratory tests. Actual measured data may

vary due to circumstances beyond our control.

## ECOLOGY, HEALTH AND SAFETY

This product is an article as defined in article 3 of regulation (EC) No 1907/2006 (REACH). It contains no substances which are intended to be released from the article under normal or reasonably foreseeable conditions of use. A safety data sheet following article 31 of the same regulation is not needed to bring the product to the market, to transport or to use it. For safe use follow the instructions given in the product data sheet. Based on our current knowledge, this product does not contain SVHC (substances of very high concern) as listed in Annex XIV of the REACH regulation or on the candidate list published by the European Chemicals Agency in concentrations above 0,1 % (w/w).

## APPLICATION INSTRUCTIONS

### APPLICATION

#### IMPORTANT

##### **Strictly follow installation procedures**

Strictly follow installation procedures as defined in Method Statements, application manuals and working instructions which must always be adjusted to the actual site conditions.

#### IMPORTANT

##### **Application by trained personnel**

The application of this Product must only be carried out by an applicator that is trained or approved by Sika. The applicator must also be experienced in this type of application.

#### IMPORTANT

##### **Ventilation in confined spaces**

Always ensure good ventilation when applying the Product in a confined space.

#### INSTALLATION PROCEDURE

Before applying the roof membrane, fasten the Product securely to the roof deck or parapet.

For mechanically fastened roofs, design the fasteners to resist the wind load forces at the project location.

Reference the current installation instructions for Sarnafil® and Sikaplan® flat-roof waterproofing membranes.

Reference further documentation where applicable, such as relevant method statements, application manuals and installation or working instructions.

### Application below +5 °C

Note: Special measures may be compulsory for installation below +5 °C ambient temperature due to safety requirements in accordance with national regulations. Note: Installation of ancillary products such as contact adhesives or cleaners is limited to temperatures above +5 °C. Refer to the corresponding Product Data Sheets.

## LOCAL RESTRICTIONS

Please note that as a result of specific local regulations the performance of this product may vary from country to country. Please consult the local Product Data Sheet for the exact description of the application fields.

## LEGAL NOTES

The information, and, in particular, the recommendations relating to the application and end-use of Sika products, are given in good faith based on Sika's current knowledge and experience of the products when properly stored, handled and applied under normal conditions in accordance with Sika's recommendations. In practice, the differences in materials, substrates and actual site conditions are such that no warranty in respect of merchantability or of fitness for a particular purpose, nor any liability arising out of any legal relationship whatsoever, can be inferred either from this information, or from any written recommendations, or from any other advice offered. The user of the product must test the product's suitability for the intended application and purpose. Sika reserves the right to change the properties of its products. The proprietary rights of third parties must be observed. All orders are accepted subject to our current terms of sale and delivery. Users must always refer to the most recent issue of the local Product Data Sheet for the product concerned, copies of which will be supplied on request.

#### SIKA LIMITED

Watchmead  
Welwyn Garden City  
Hertfordshire, AL7 1BQ  
Tel: 01707 394444  
Web: [www.sika.co.uk](http://www.sika.co.uk)  
Twitter: @SikaLimited



#### Product Data Sheet

Sarnafil® T Scupper square  
March 2024, Version 03.01  
020945032050001001

SarnafilTScuppersquare-en-GB-(03-2024)-3-1.pdf